

±2.2 Acre Development Opportunity

Mixed-Use/Retail/Medical Office/Commercial

13667 E US Hwy 98,
Inlet Beach, FL 32461

Highly visible location in the famous Beaches of South Walton



Highlights

- + Surrounded by some of the most affluent demographics in Florida, and the fastest housing growth in the region.
- + Highly visible site with great visibility and over 450' of frontage along US Highway 98, perfectly positioned to capture the value associated with the renowned destination communities of Rosemary Beach and Alys Beach
- + Great opportunity for development of mixed-use commercial, medical office, retail, professional uses, and/or a variety of personal and business services that cater to the nearby affluent communities.
- + Zoning: Village Mixed Use; Walton County

Contact Us

Tom Watson

Senior Vice President
+1 850 527 3524
thomas.watson@cbre.com

Elizabeth Forsythe

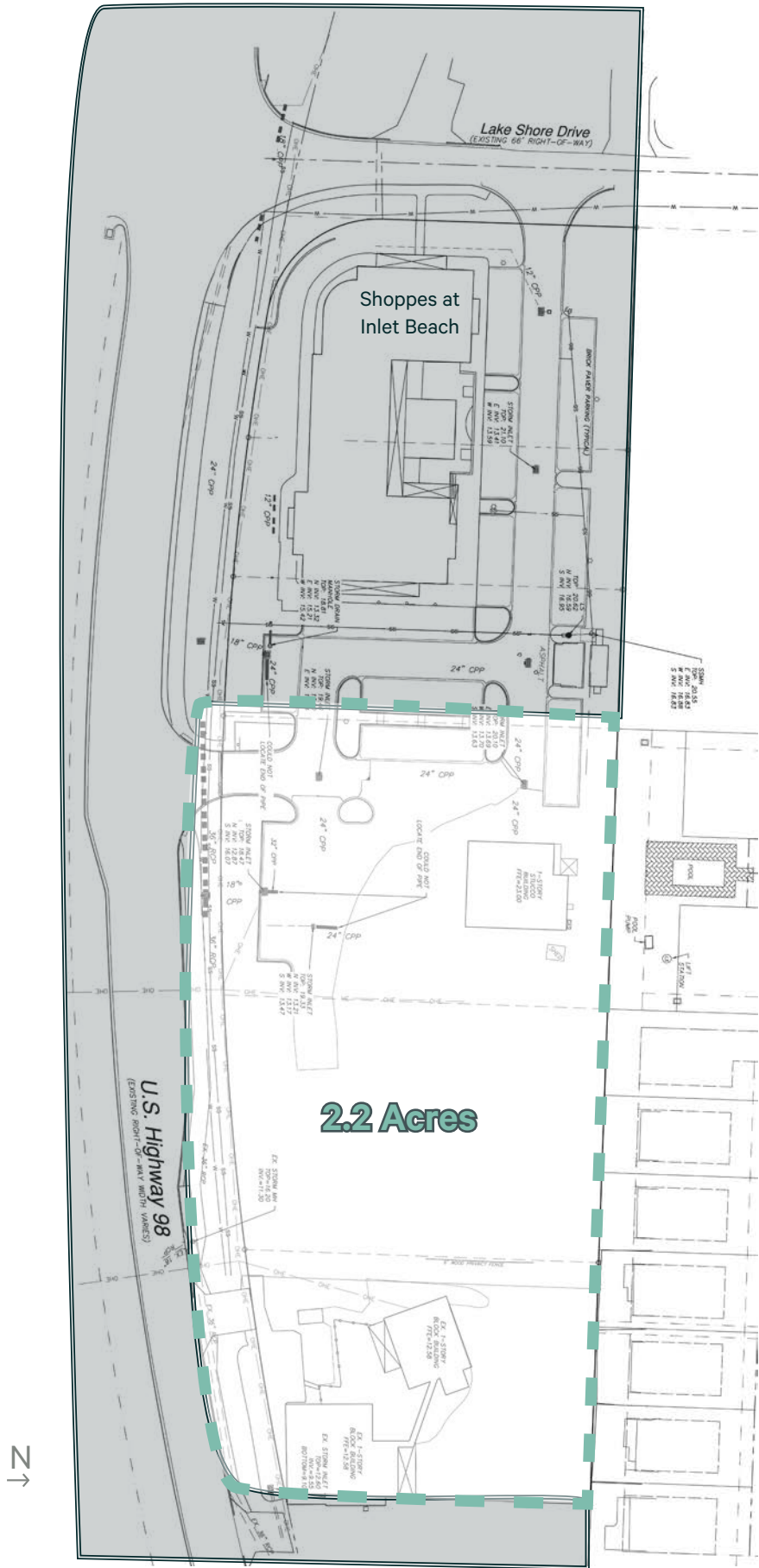
Vice President
+1 850 585 5290
elizabeth.forsythe@cbre.com

Sam Herrera

Associate
+1 714 227 3829
sam.herrera@cbre.com

±2.2 Acre Development Opportunity
13667 E US Hwy 98 | Inlet Beach, FL 32461

Survey



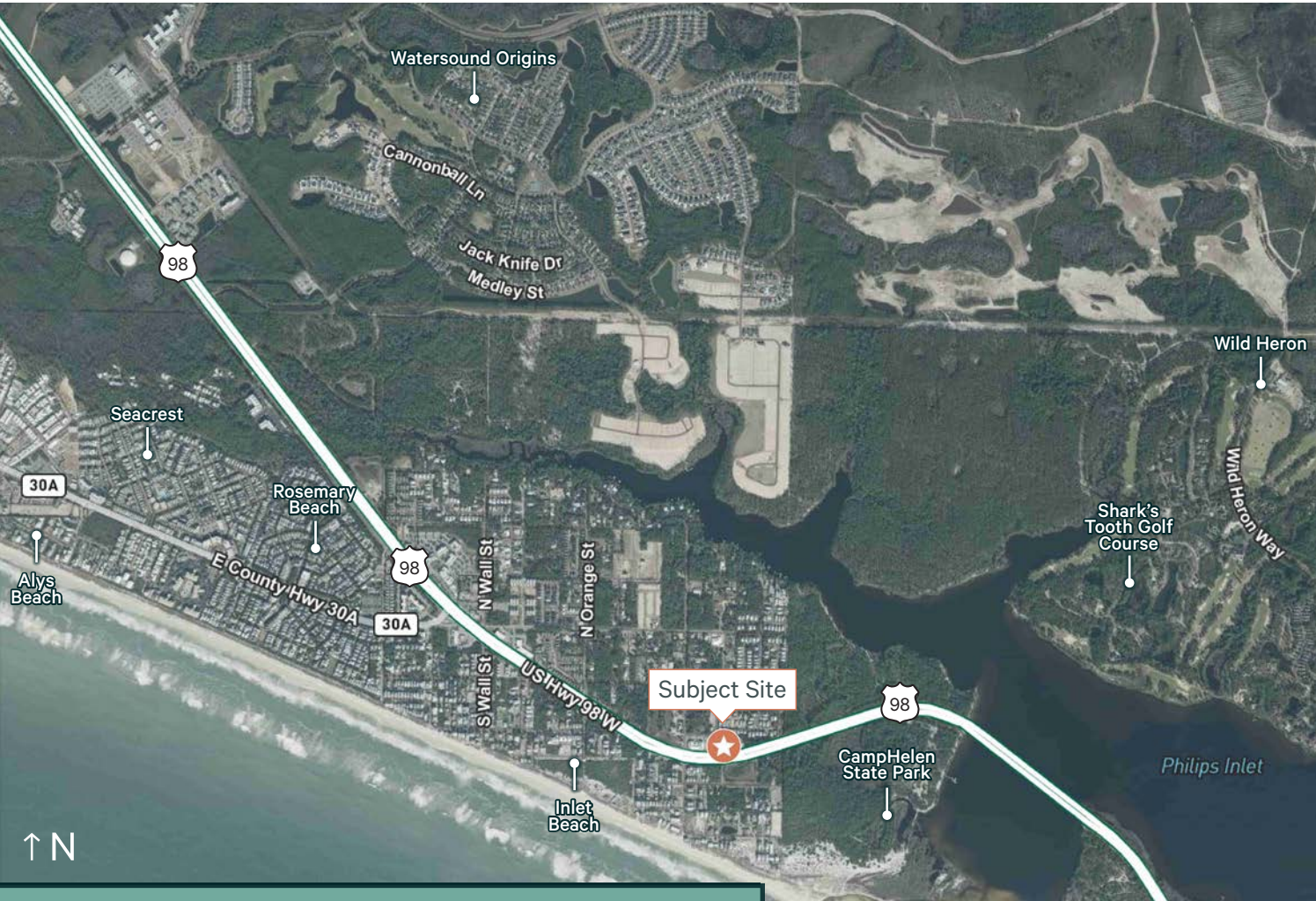
±2.2 Acre Development Opportunity
13667 E US Hwy 98 | Inlet Beach, FL 32461

For Sale

Photos



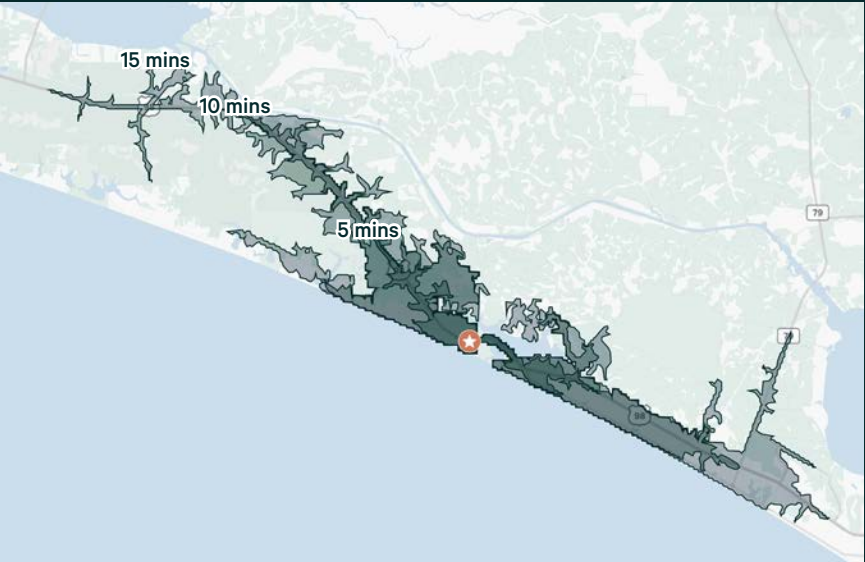
±2.2 Acre Development Opportunity
13667 E US Hwy 98 | Inlet Beach, FL 32461



Demographics	5 Mins	10 Mins	15 Mins
Population	3,911	10,908	19,023
Average Household Income	\$160,078	\$152,599	\$151,078
Average Housing Value	\$892,060	\$785,403	\$744,079
Housing Units	6,296	14,481	22,309
Seasonal Population* (Based on 3x Housing Units*)	18,888	43,443	66,927

The Beaches of South Walton

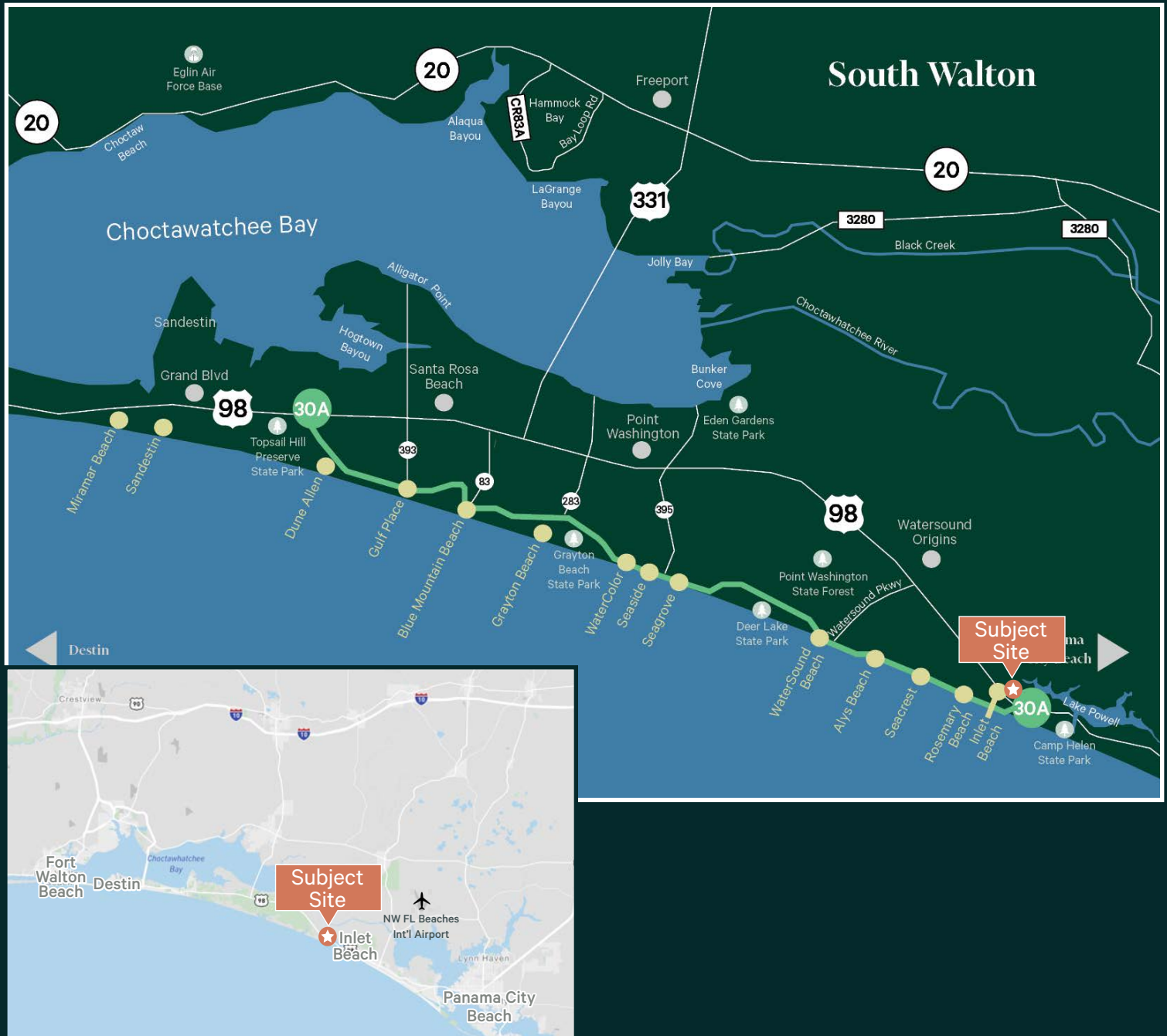
The Beaches of South Walton market, including the affluent communities along Scenic Highway 30A and surrounding new developments throughout the area, are growing rapidly, providing more opportunities for retail, professional and medical services.



±2.2 Acre Development Opportunity

13667 E US Hwy 98 | Inlet Beach, FL 32461

For Sale



Contact Us

Tom Watson

Senior Vice President
+1 850 527 3524
thomas.watson@cbre.com

Elizabeth Forsythe

Vice President
+1 850 585 5290
elizabeth.forsythe@cbre.com

Sam Herrera

Associate
+1 714 227 3829
sam.herrera@cbre.com

© 2025 CBRE, Inc. All rights reserved. This information has been obtained from sources believed reliable, but has not been verified for accuracy or completeness. You should conduct a careful, independent investigation of the property and verify all information. Any reliance on this information is solely at your own risk. CBRE and the CBRE logo are service marks of CBRE, Inc. All other marks displayed on this document are the property of their respective owners, and the use of such logos does not imply any affiliation with or endorsement of CBRE. Photos herein are the property of their respective owners. Use of these images without the express written consent of the owner is prohibited.

CBRE