



TRI STATE  
COMMERCIAL®  
REAL ESTATE EXPERTS

For Lease



# Rustic Commercial Loft For Lease

4,000 SF

650 Sackett St • Brooklyn • NY

For Pricing **Call: 718-437-6100**

**Shlomi Bagdadi**  
📞 718.437.6100  
sb@tristatecr.com

**Moshe Akiva**  
📞 718.437.6100 x116  
Moshe.A@TriStateCR.com





## Location Overview

Located in the thriving neighborhood of Gowanus, Brooklyn between 3rd Ave & 4th Ave near the Union St subway Station. Just minutes away from the lively streets of Park Slope and Carroll Gardens. The area is known for its vibrant arts scene, local breweries, and unique eateries, while still offering a peaceful, residential atmosphere.

Nearest Transit: D, N, & R trains at Union St and the B37, B63, & B103 bus lines.

Nearby tenants include TD Bank, Starbucks, Pinkberry, Chase Bank, Häagen-Dazs, Warby Parker, Cinnabon, Shake Shack, Buffalo Wild Wings, Chick-fil-A, Extra Space Storage, Insomnia Cookies, Marshalls, SEPHORA, Staples, Whole Foods Market, Bareburger, Key Food Urban Marketplace, Ghenet, Boulderling Project Brooklyn, Dinosaur Bar-B-Que, Blueprint, Miriam, Bricolage, Pure Barre, The Ripped Bodice, and much more!

## Main Highlights

- ▶ Exposed brick
- ▶ High Ceilings
- ▶ Sky lights
- ▶ Glass frontage



**3,848 SF**

Total Building Size



**3,965 SF**

Lot Size



**M1-4**

Zoning

FOR LEASE • 4,000 SF • For Pricing

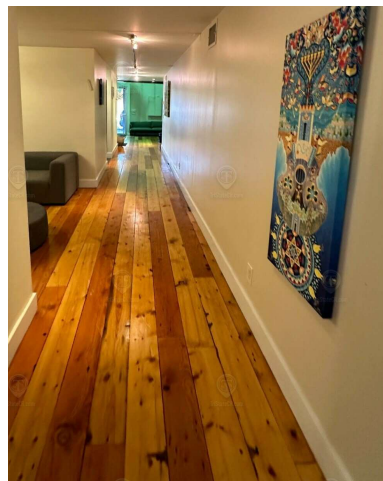
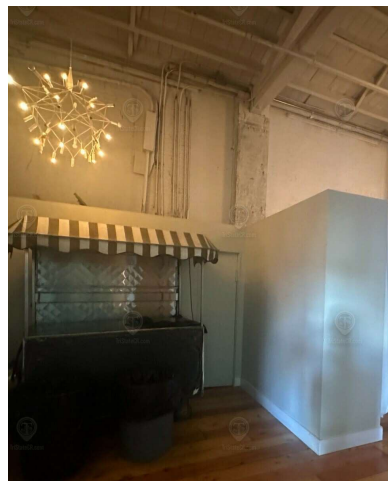
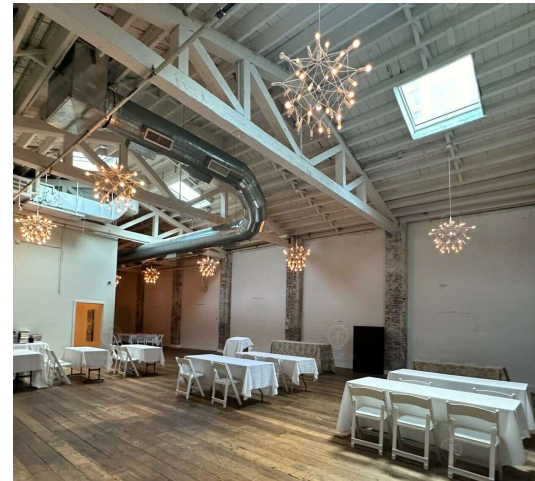
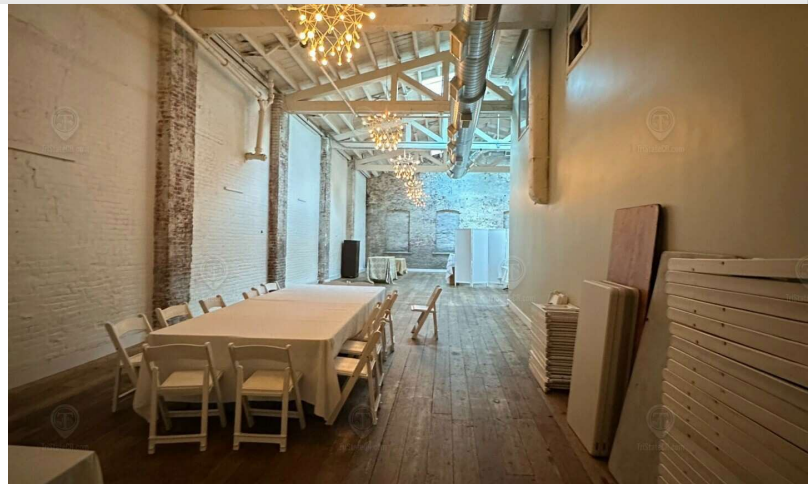
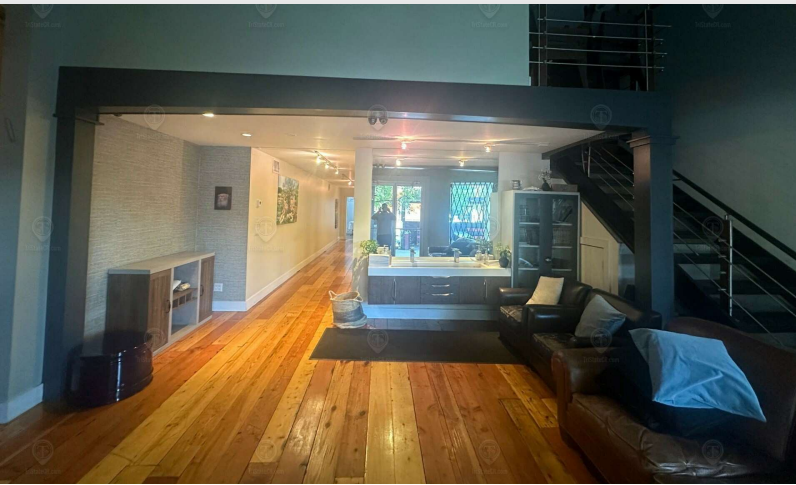
**Call: 718-437-6100**

**Shlomi Bagdadi**  
☎ 718.437.6100  
sb@tristatecr.com

**Moshe Akiva**  
☎ 718.437.6100 x116  
Moshe.A@TriStateCR.com

Broker is relying on Landlord or other Landlord-supplied sources for the accuracy of said information and has no knowledge of the accuracy of it. Broker makes no representation and/or warranty, expressed or implied, as to the accuracy of such information.





FOR LEASE • 4,000 SF • For Pricing

**Call: 718-437-6100**

**Shlomi Bagdadi**  
📞 718.437.6100  
sb@tristatecr.com

**Moshe Akiva**  
📞 718.437.6100 x116  
Moshe.A@TriStateCR.com

Broker is relying on Landlord or other Landlord-supplied sources for the accuracy of said information and has no knowledge of the accuracy of it. Broker makes no representation and/or warranty, expressed or implied, as to the accuracy of such information.





FOR LEASE • 4,000 SF • For Pricing

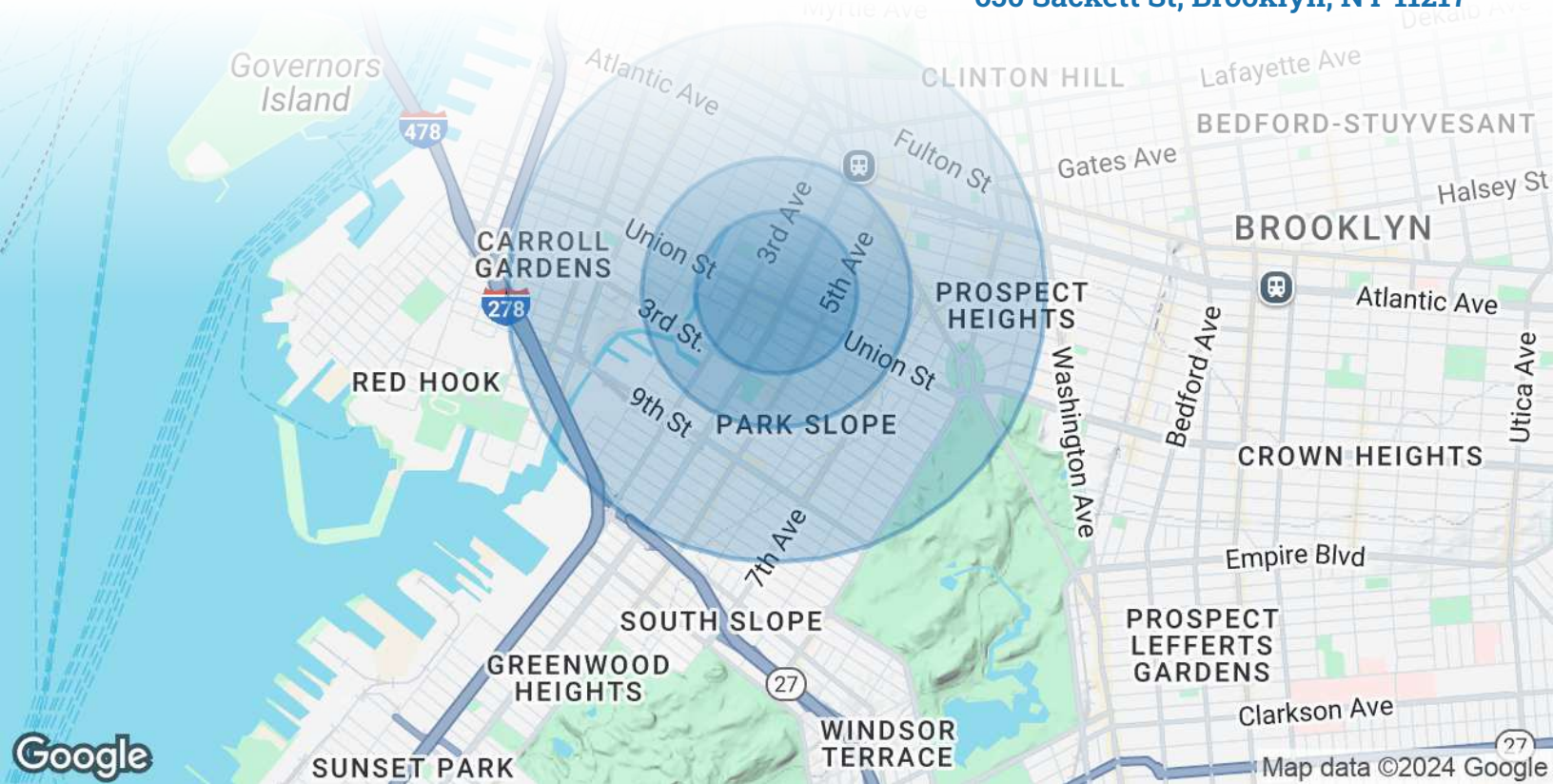
**Call: 718-437-6100**

**Shlomi Bagdadi**  
 ☎ 718.437.6100  
 sb@tristatecr.com

**Moshe Akiva**  
 ☎ 718.437.6100 x116  
 Moshe.A@TriStateCR.com

Broker is relying on Landlord or other Landlord-supplied sources for the accuracy of said information and has no knowledge of the accuracy of it. Broker makes no representation and/or warranty, expressed or implied, as to the accuracy of such information.

650 Sackett St, Brooklyn, NY 11217



POPULATION	0.3 MILES	0.5 MILES	1 MILE
Total Population	11,747	33,888	150,344
Average Age	37	38	38
Average Age (Male)	37	37	37
Average Age (Female)	38	39	38
HOUSEHOLDS & INCOME	0.3 MILES	0.5 MILES	1 MILE
Total Households	5,067	14,910	68,639
# of Persons per HH	2.3	2.3	2.2
Average HH Income	\$221,919	\$213,192	\$209,308
Average House Value	\$1,692,687	\$1,589,694	\$1,579,898



**150,344**

People within 1 Mile



**\$209,308**

Avg Household Income

FOR LEASE • 4,000 SF • For Pricing

**Call: 718-437-6100**

**Shlomi Bagdadi**  
 📞 718.437.6100  
 sb@tristatecr.com

**Moshe Akiva**  
 📞 718.437.6100 x116  
 Moshe.A@TriStateCR.com

Broker is relying on Landlord or other Landlord-supplied sources for the accuracy of said information and has no knowledge of the accuracy of it. Broker makes no representation and/or warranty, expressed or implied, as to the accuracy of such information.



For Lease



TriStateCR.com

# 4,000 SF | 650 Sackett Street Rustic Commercial Loft For Lease

4,000 SF • For Pricing [Call: 718-437-6100](tel:718-437-6100)

650 Sackett St • Brooklyn • NY

**Shlomi Bagdadi**  
📞 718.437.6100  
sb@tristatecr.com

**Moshe Akiva**  
📞 718.437.6100 x116  
Moshe.A@TriStateCR.com

**SITE SOURCE**  
RETAIL BROKER NETWORK