

255 Kansas St San Francisco, CA

**Exclusive Historic
Office Space:
Adaptable, Safe &
Bright
FOR LEASE**



Charlie Cutler
Partner
charlie@calcosf.com
415.850.4935
LIC #2026787

Scott Mason
President
scott@calcosf.com
415.215.1937
LIC #01036610



CALCO
COMMERCIAL, INC.
calcosf.com

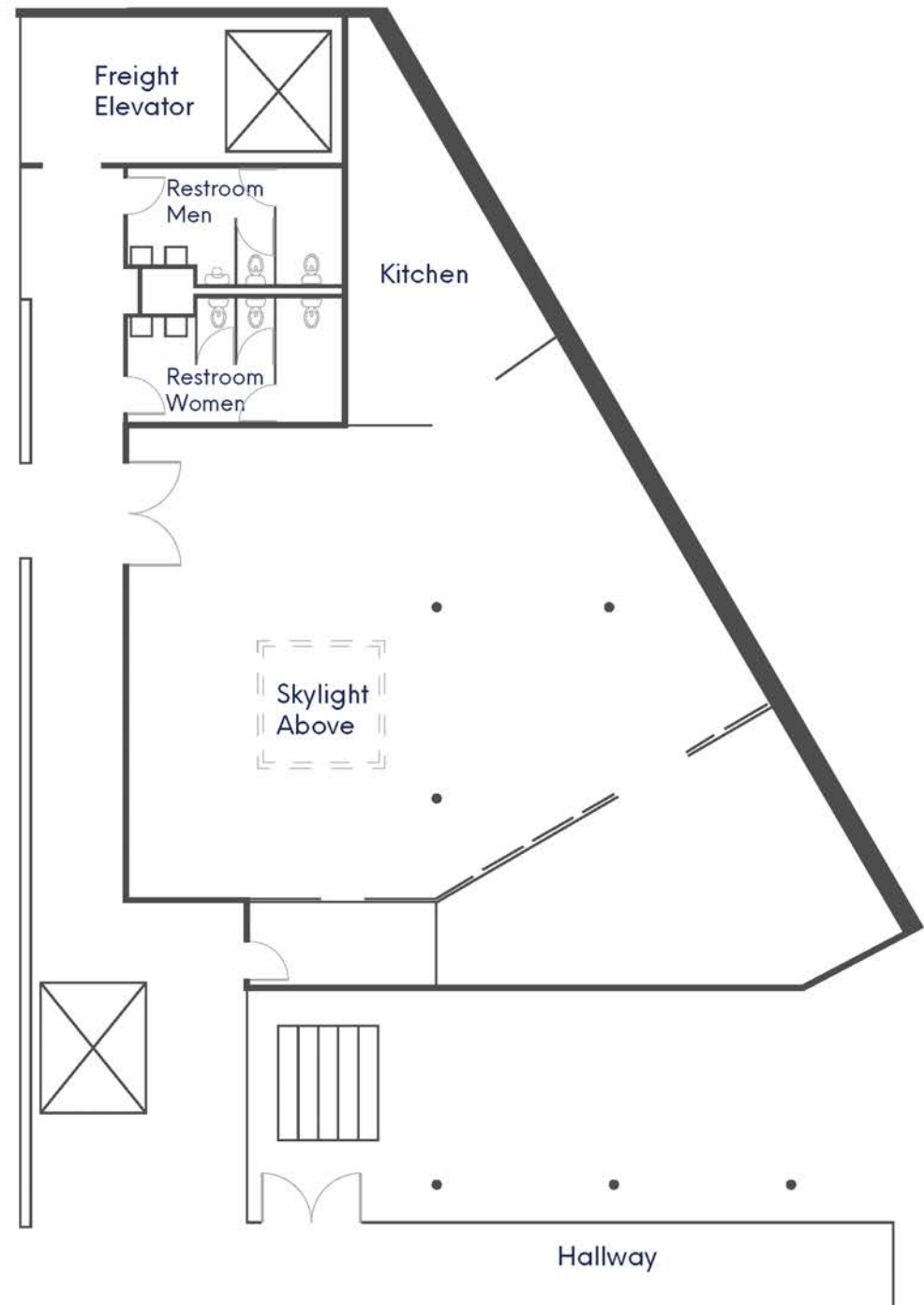
255 Kansas Street

Property Highlights:

- Round-the-clock secure, access-controlled environment in a historic brick and beam structure
- Ready for immediate occupancy
- Ample on-site parking is available
- Exceptionally high ceilings
- Secure indoor storage for bicycles
- Spacious and bright area enhanced by skylights
- Customizable layout with an adaptable open-plan space
- Includes private office spaces and a sizeable conference room
- Equipped with kitchenette
- Integrated heating, ventilation, and air conditioning system

Charlie Cutler
Partner
charlie@calcosf.com
415.850.4935
LIC #2026787

Scott Mason
President
scott@calcosf.com
415.215.1937
LIC #01036610



255 Kansas Street

Gallery



255 Kansas Street

Gallery



255 Kansas Street

Parking Highlights:

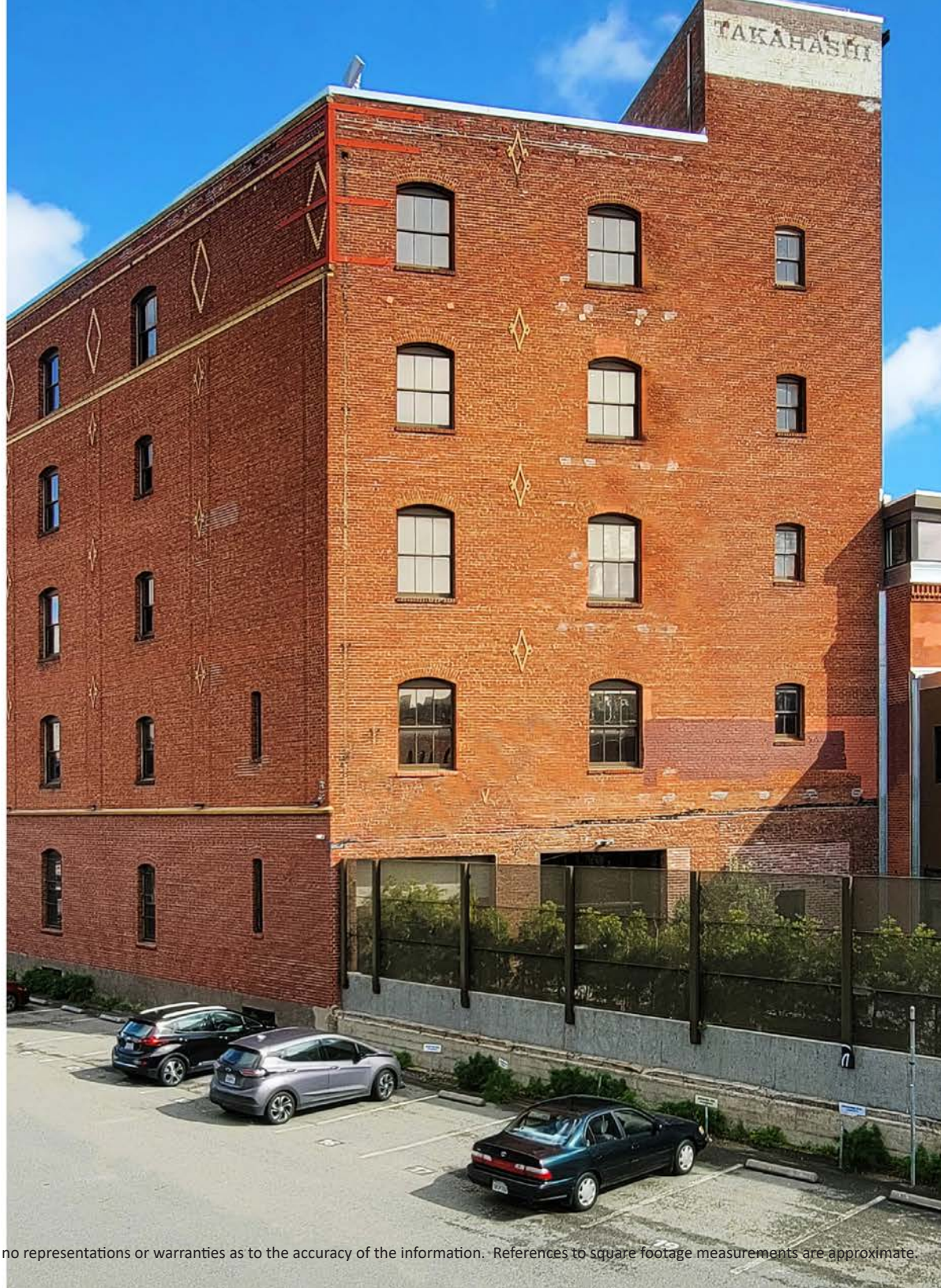
- Plenty of spacious parking spots accessible
- Round-the-clock security and controlled access
- Safeguarded indoor racks for bicycle parking



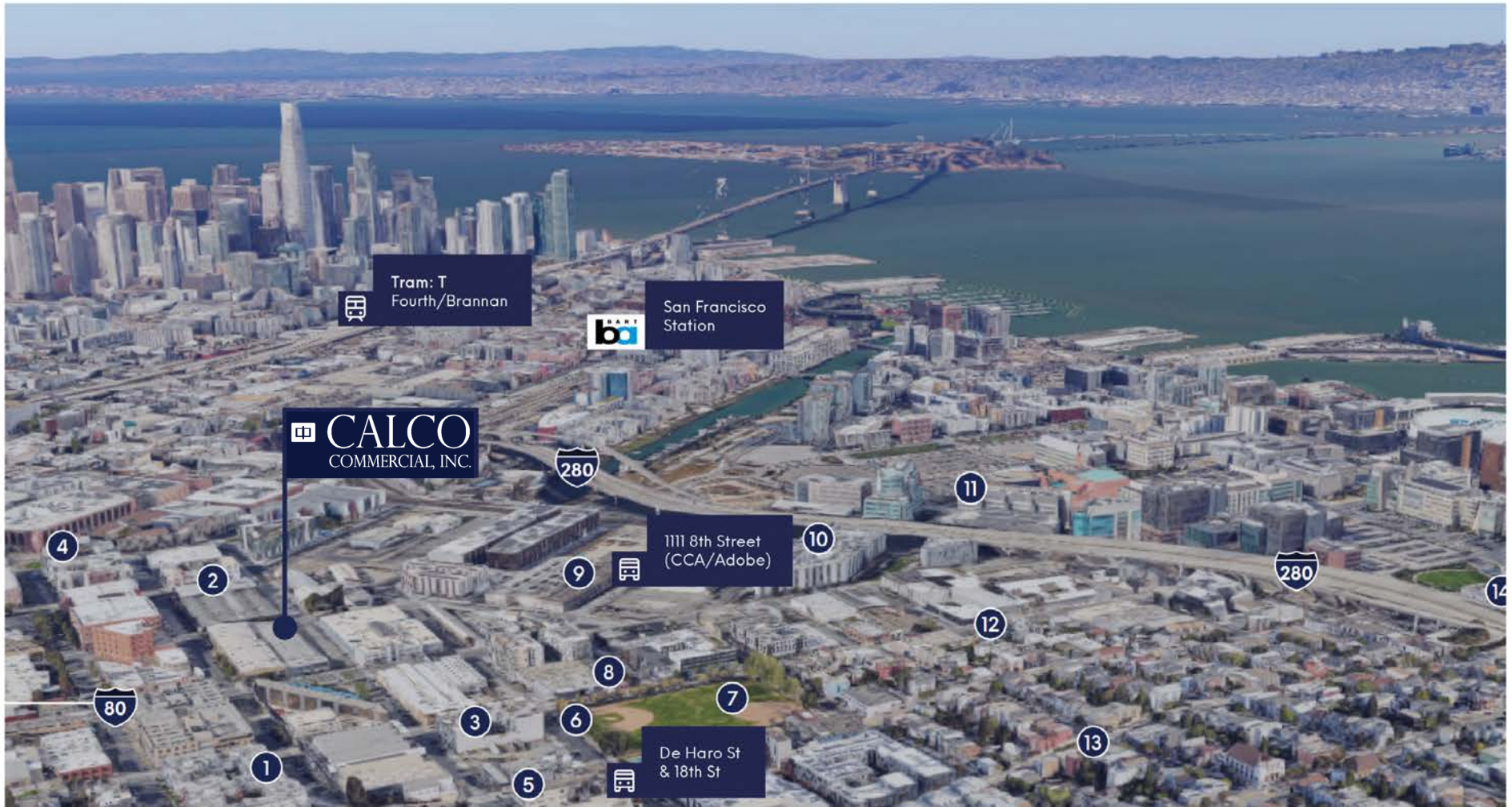
Charlie Cutler | Partner
415.850.4939 | charlie@calcosf.com
DRE #2026787

Scott Mason | President
415.215.1937 | scott@calcosf.com
DRE #01036610

Calco Commercial, Inc.
p. 415.215.1937 | info@calcosf.com
www.calcosf.com | CL 01908821



Amenity Map



- | | | | | |
|-----------------|-------------------|----------------------------------|---------------------------|--------------------|
| 1 Whole Foods | 4 Niku Steakhouse | 7 Jackson Playground | 10 Kaiser Permanente | 13 Goat Hill Pizza |
| 2 Dumpling Time | 5 Anchor Brewing | 8 Tree Parkside | 11 UCSF Medical Center | 14 MBC BioLabs |
| 3 Phils Coffee | 6 Zesty | 9 California College of the Arts | 12 Bottom of the Hill Bar | 15 Thinkers cafe |