



For Lease

Lease Rate:

Please Inquire

### Zachary Zakas

Associate

+1 912 417 0009

zachary.zakas@colliers.com



Colliers | Savannah

545 E. York Street

Savannah, GA 31401

Main: +1 912 233 7111

colliers.com/savannah

**ZENITH**  
Industrial Outdoor Storage

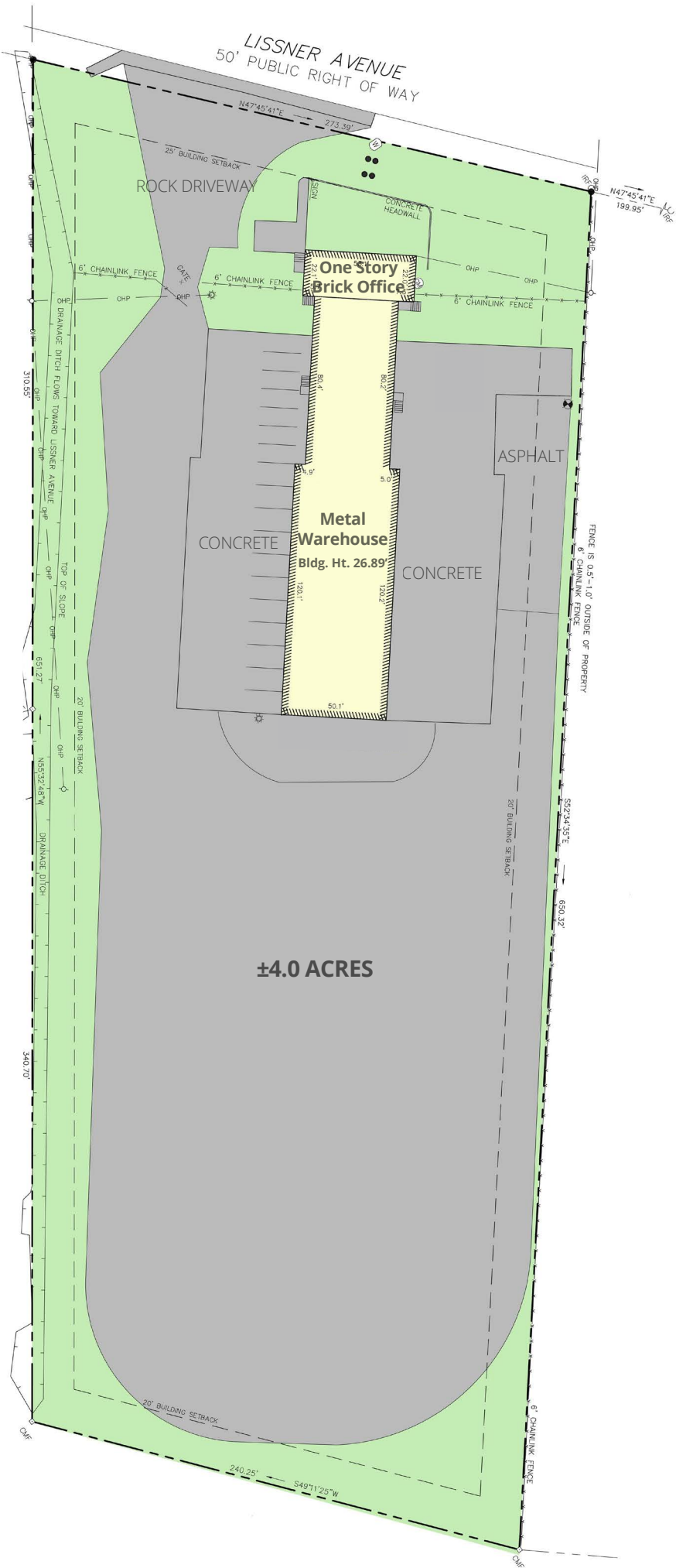
## Truck Terminal/Container Yard with Crossdock Warehouse

1501 Lissner Avenue | Savannah, Georgia 31408

- ±4.0 AC truck terminal
- ±7,800 SF crossdock warehouse
- Dock Doors: 28 (expandable to 34)
- ±2,550 SF of office
- Concrete truck court and landing pads
- 6' chain link fence with manual gate
- Perimeter lighting
- Zoned I-L - Light Industrial (City of Savannah)
- Direct access to Interstate-516 and Highway 80
- **Only ±2 miles to the GPA's Ocean Terminal, ±3 miles from Garden City Terminal**

Accelerating success.

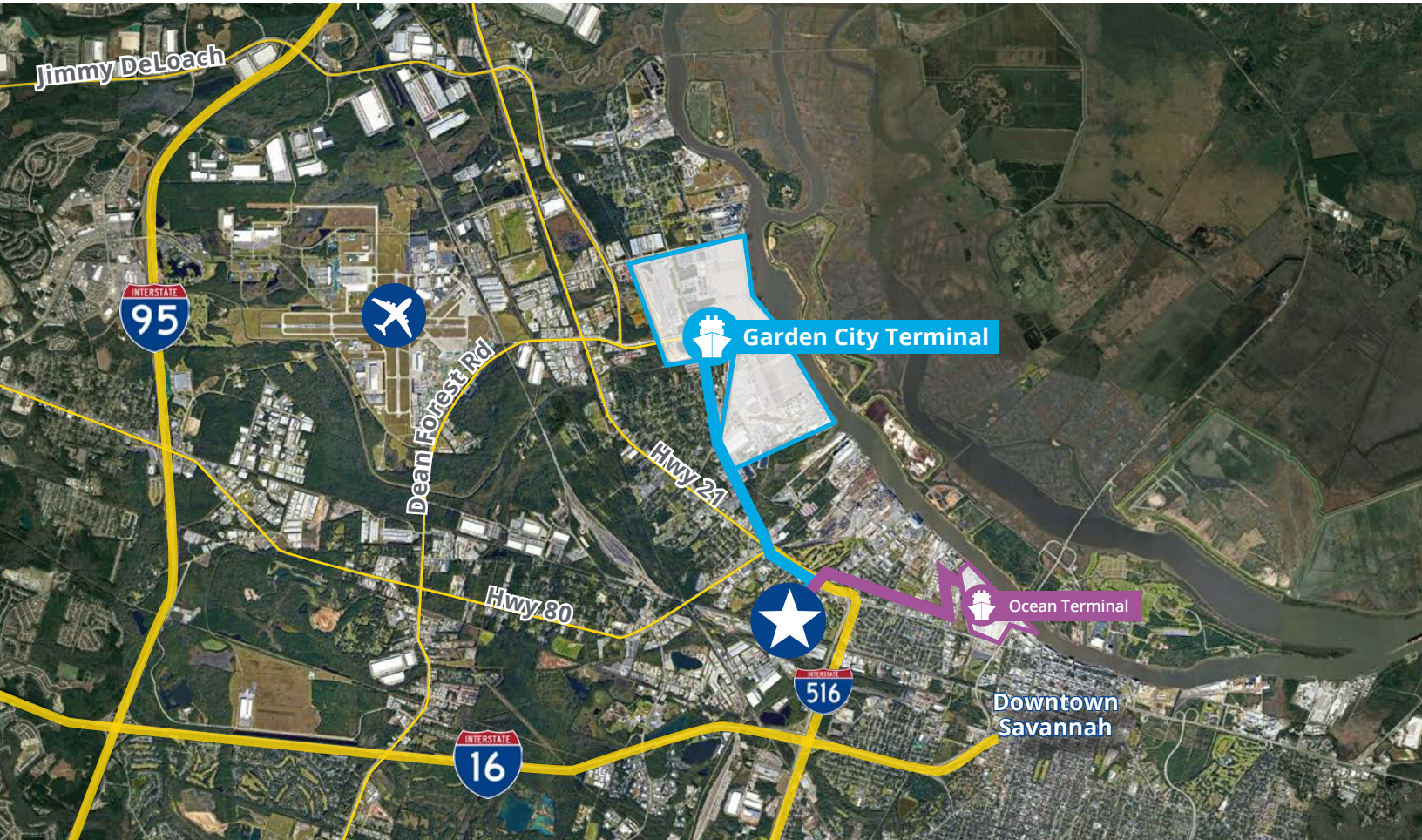
# Site Plan





# Neighboring Tenants





## Location Overview

### Travel Distances

Interstate 516	0.5 Miles
Interstate 16	1.7 Miles
Ocean Terminal	2.0 Miles
Garden City Terminal	3.0 Miles
Interstate 95	6.8 Miles
Savannah/HH Airport	8.3 Miles

**Zachary Zakas**

Associate

+1 912 417 0009

zachary.zakas@colliers.com

**Colliers**

Colliers | Savannah

545 E York Street

Savannah, GA 31401

Main: +1 912 233 7111

colliers.com/savannah

**ZENITH**  
Industrial Outdoor Storage

This document has been prepared by Colliers International for advertising and general information only. Colliers International makes no guarantees, representations or warranties of any kind, expressed or implied, regarding the information including, but not limited to, warranties of content, accuracy and reliability. Any interested party should undertake their own inquiries as to the accuracy of the information. Colliers International excludes unequivocally all inferred or implied terms, conditions and warranties arising out of this document and excludes all liability for loss and damages arising there from. This publication is the copyrighted property of Colliers International and/or its licensor(s). ©2024. All rights reserved.