

# 3045 S Meridian Street

Indianapolis, IN 46217



## Property Highlights:

- + 1,680 SF
- + Brand new HVAC
- + TI available (pending credit and term)
- + Large parking lot

## Area Demographics

	1 Mile	3 Miles	5 Miles
Population	6,123	69,419	224,351
Household Income	\$79,104	\$75,453	\$81,038
Employees	4,326	54,981	236,948
Daytime Pop.	433	1,589	8,486

## Traffic Count

	Vehicles Per Day
Troy Avenue	8,068+
S Meridian St	10,788+

Office For Lease

3045 S Meridian Street | Indianapolis, IN 46217

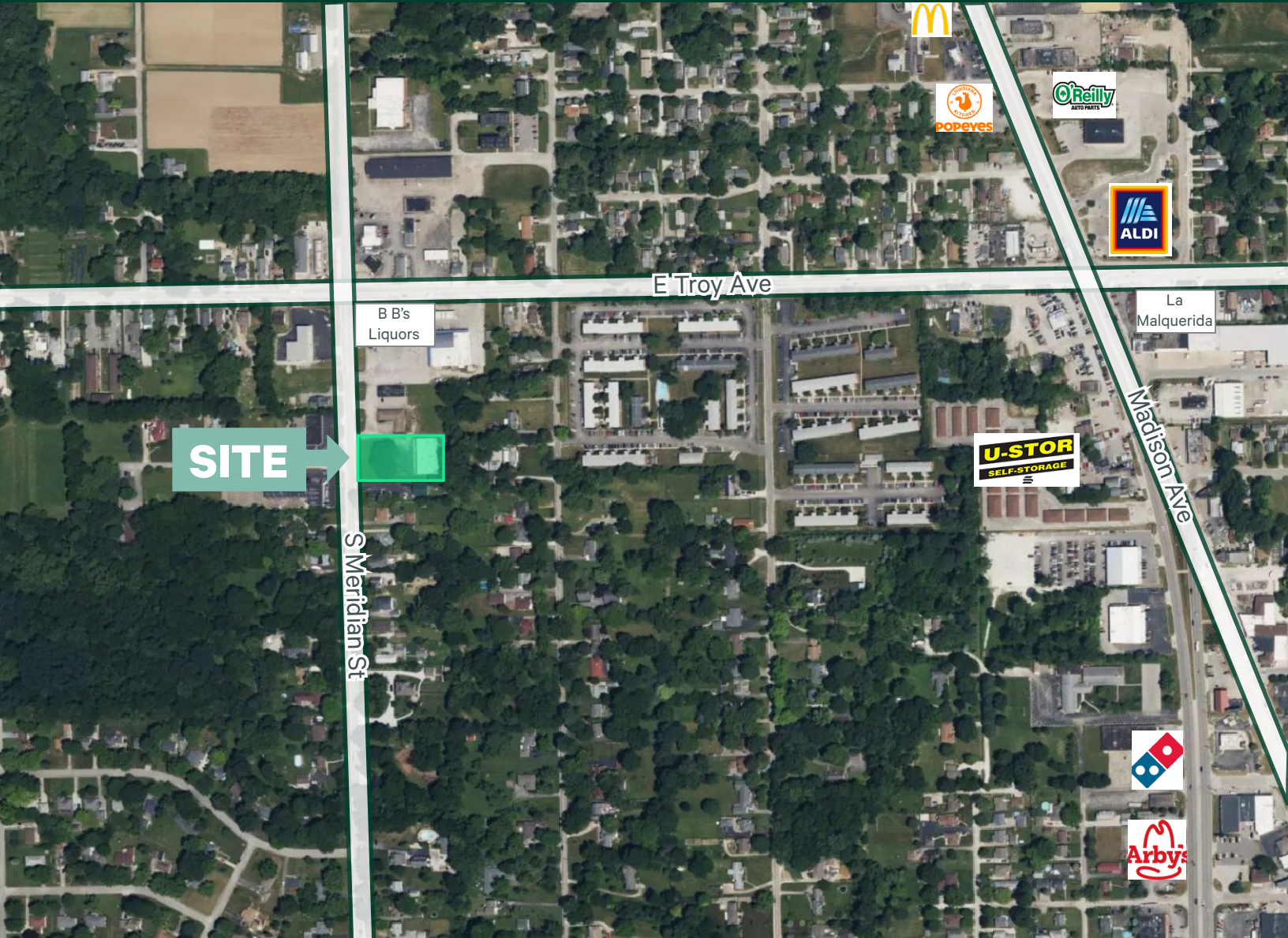
For Lease



**Office For Lease**

3045 S Meridian Street | Indianapolis, IN 46217

For Lease



Download Virtual Tour



**Contact Us**

**Scott Wise**  
Vice President  
+1 317 613 3124  
scott.wise@cbre.com

**CBRE Indianapolis**  
8888 Keystone Crossing  
Suite 1000 | Indianapolis, IN  
+1 317 269 1000

© 2024 CBRE, Inc. All rights reserved. This information has been obtained from sources believed reliable but has not been verified for accuracy or completeness. CBRE, Inc. makes no guarantee, representation or warranty and accepts no responsibility or liability as to the accuracy, completeness, or reliability of the information contained herein. You should conduct a careful, independent investigation of the property and verify all information. Any reliance on this information is solely at your own risk. CBRE and the CBRE logo are service marks of CBRE, Inc. All other marks displayed on this document are the property of their respective owners, and the use of such marks does not imply any affiliation with or endorsement of CBRE. Photos herein are the property of their respective owners. Use of these images without the express written consent of the owner is prohibited.