

**FOR LEASE | CLEARBROOK BUSINESS PARK**



**5707 - 5711 LACEY BLVD SE, LACEY, WA 98503**

### PROPERTY OVERVIEW

The Clearbrook Business Park in Lacey, Washington, provides a premier leasing environment tailored for diverse business operations. This multi-tenant property features three buildings specifically designed to accommodate flexible office, retail, and warehouse configurations. The park offers an ideal setting for primary industrial uses alongside secondary retail applications.

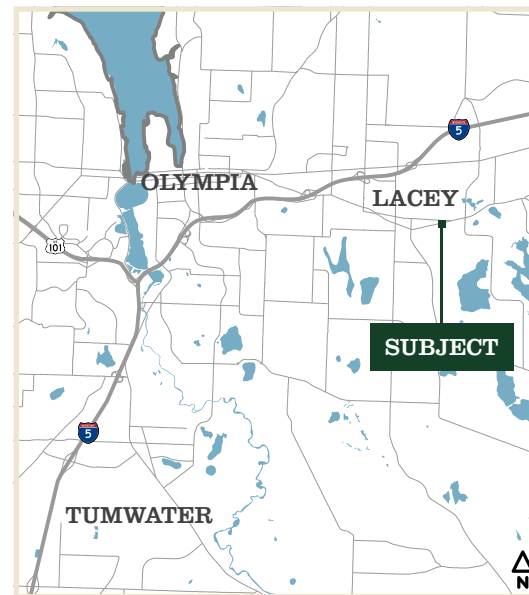
Tenants benefit from ample parking and highly visible signage opportunities directly accessible from Lacey Boulevard. Furthermore, the location boasts an excellent existing tenant mix, fostering a dynamic and collaborative commercial community.

**YEAR BUILT: 1978**

**CLEAR HEIGHT: 12 TO 15 FEET**

**LAND ACRES: 2.78 AC**

**PARKING: 94 SURFACE SPACES**



**Quint Newell**  
COMMERCIAL BROKER  
360.688.8333  
quintn@greenecommercial.com

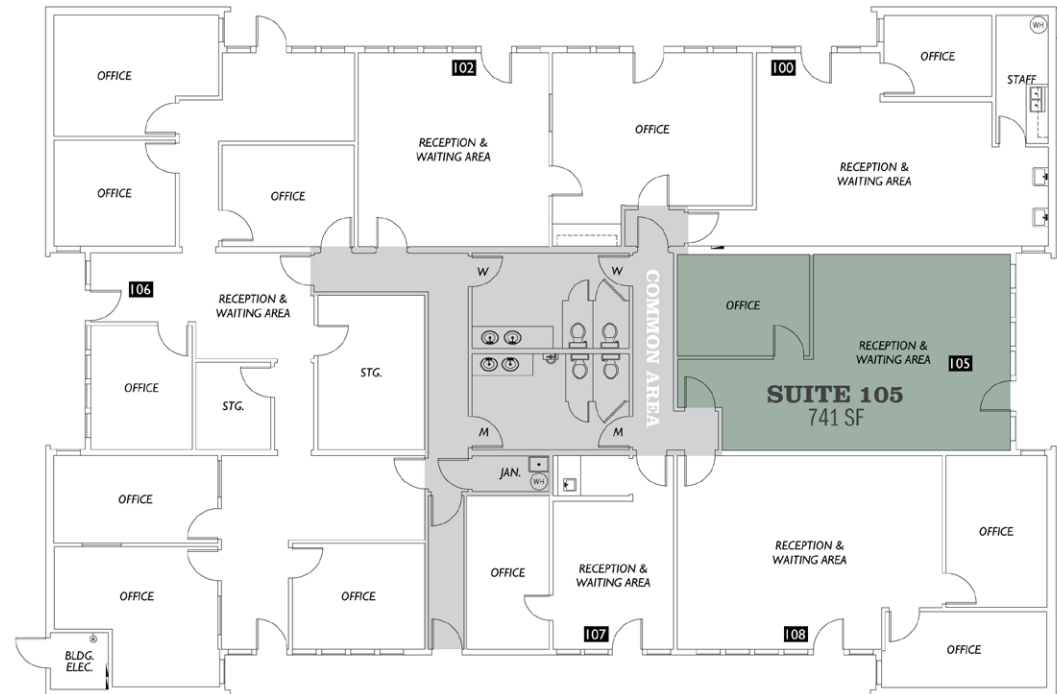
The information contained herein has been obtained from sources believed to be reliable. However, we make no guarantees, warranties, or representations as to the completeness or accuracy thereof. All information is submitted subject to errors, omissions, change of price, rental or other conditions, prior sale, lease or financing, or withdrawal without notice. Any projections, opinions, assumptions, or estimates used are for illustrative purposes only and do not constitute a legal survey (RCW 18.43). All boundaries are approximate and must be independently verified by a licensed professional land surveyor. The creator assumes no liability for the accuracy of these depictions.



**360.528.4167**  
[www.greenecommercial.com](http://www.greenecommercial.com)



**BUILDING 5707 - SUITE 105**



**AVAILABLE**

THIS FLOORPLAN IS NOT TO SCALE  
 SIZES AND DIMENSIONS ARE APPROXIMATE, ACTUAL MAY VARY.  
This information, while obtained from sources we deem reliable, is not guaranteed. It is provided without any representation, warranty or guarantee, expressed or implied as to its accuracy. Prospective buyer or tenant should conduct an independent investigation and verification of all matters deemed to be material, including, but not limited to, statements of income and expenses. Consult your attorney, accountant, or other professional advisor.

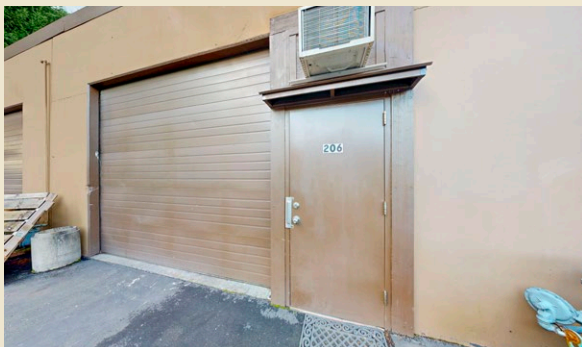
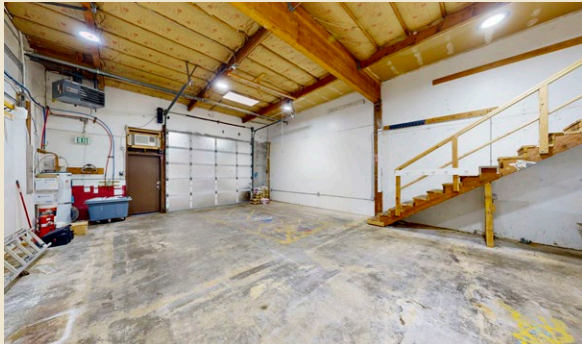
**741 SF**

**\$18.00/SF, +NNN (EST \$8.65)**

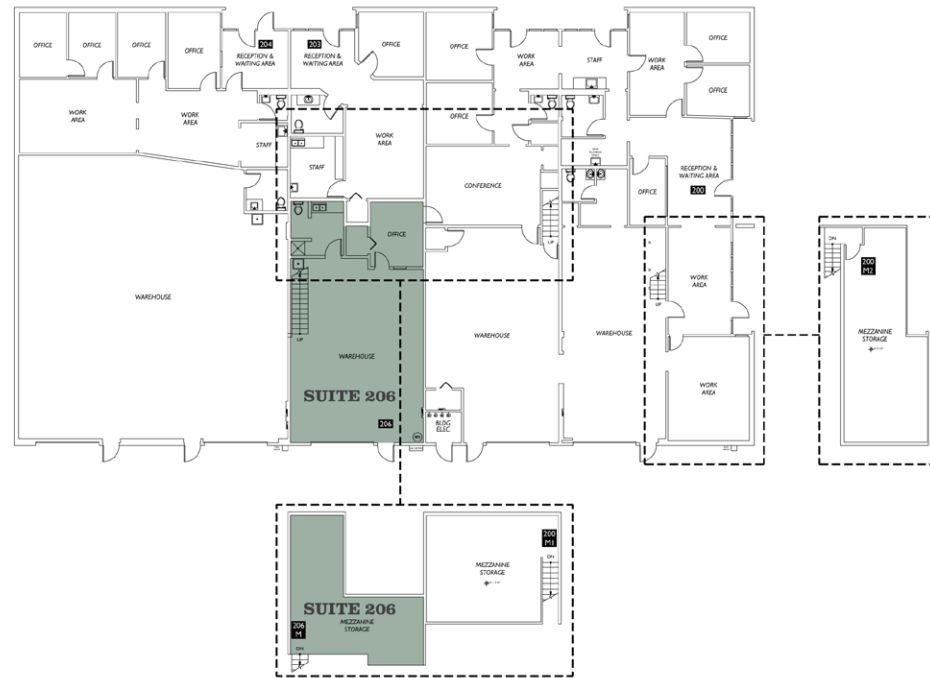
**CBA # 42779585**

**Quint Newell**  
 COMMERCIAL BROKER  
 360.688.8333  
 quintn@greenecommercial.com

**360°**  
 greene.properties/Clearbrook\_105



**BUILDING 5709 - SUITE 206**



**AVAILABLE**

THIS FLOORPLAN IS NOT TO SCALE  
 SIZES AND DIMENSIONS ARE APPROXIMATE, ACTUAL MAY VARY.  
 This information, while obtained from sources we deem reliable, is not guaranteed. It is provided without any representation, warranty or guarantee, expressed or implied as to its accuracy. Prospective buyer or tenant should conduct an independent investigation and verification of all matters deemed to be material, including, but not limited to, statements of income and expenses. Consult your attorney, accountant, or other professional advisor.

**1,580 SF**

**\$16.00/SF, +NNN (EST \$5.69)**

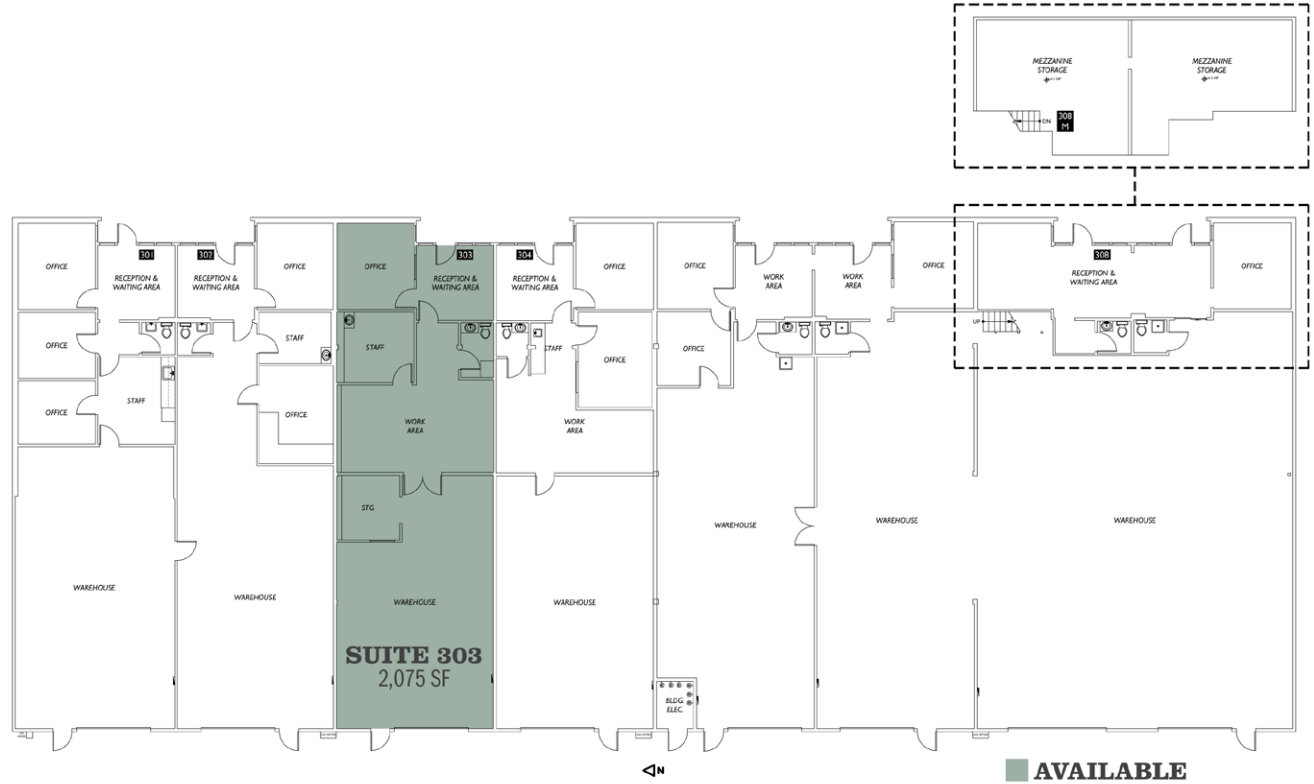
**CBA # 44444512**

**Quint Newell**  
 COMMERCIAL BROKER  
 360.688.8333  
 quintn@greenecommercial.com

**360°**  
 greene.properties/Clearbrook\_206



**BUILDING 5711 - SUITE 303**



THIS FLOORPLAN IS NOT TO SCALE  
 SIZES AND DIMENSIONS ARE APPROXIMATE, ACTUAL MAY VARY.  
 This information, while obtained from sources we deem reliable, is not guaranteed. It is provided without any representation, warranty or guarantee, expressed or implied as to its accuracy. Prospective buyer or tenant should conduct an independent investigation and verification of all matters deemed to be material, including, but not limited to, statements of income and expenses. Consult your attorney, accountant, or other professional advisor.

**2,075 SF**

**\$16.00/SF, +NNN (EST \$5.69)**

**CBA # 44443208**

**Quint Newell**  
 COMMERCIAL BROKER  
 360.688.8333  
 quintn@greenecommercial.com

**360°**  
 greene.properties/Clearbrook\_303