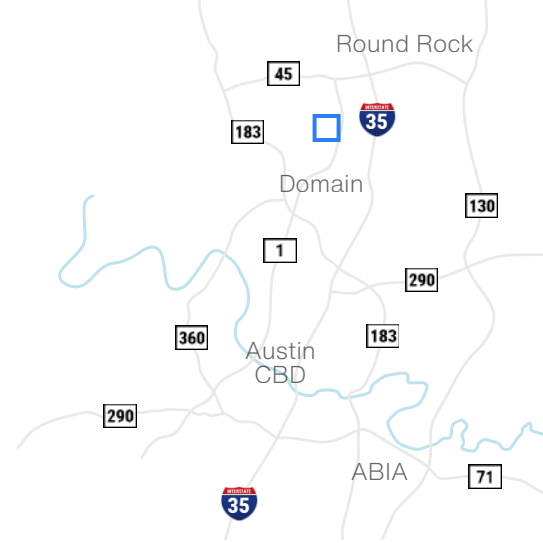


# Northtech Business Center 8

4616 West Howard Lane - Austin, TX 78728

**22,201 SF**  
**Office/Warehouse Space**



Available Suites

**Suite 850 - 22,201 SF**

## Building Features



**Existing Layout is  
100% Office**



**5:1000 Parking**



**24' Clear Height**



**Rear Loading,  
Dock High Doors**



**Less than 10 Mins.  
from The Domain**



**Quick Access to  
MoPac & TX45**



**Davis Bass**  
bass@hpitx.com  
(512) 203-5130

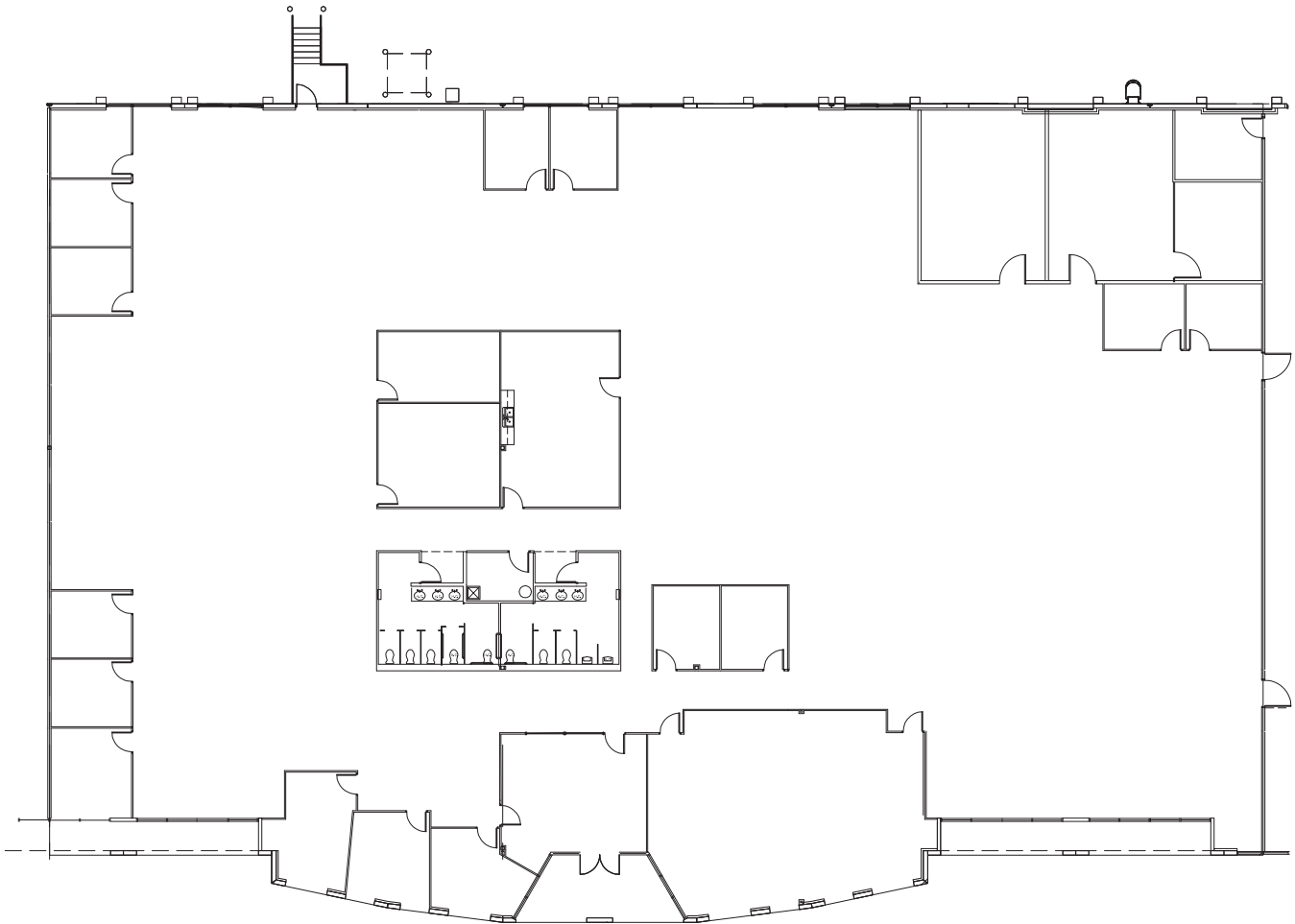
**Brooks Benkendorfer**  
brooksbenkendorfer@hpitx.com  
(512) 848-2582

No warranty or representation, expressed or implied, is made as to the accuracy of the information contained herein, and same is submitted subject to errors, omissions, change of price, rental or other conditions, withdrawal without notice, and to any special listing conditions imposed by the principals.

# Northtech Business Center 8

4616 West Howard Lane - Austin, TX 78728

**Suite 850**  
**22,201 SF**  
**Office/Warehouse**  
**Space**



**Existing Layout is 100% Office**



**Davis Bass**  
bass@hpitx.com  
(512) 203-5130

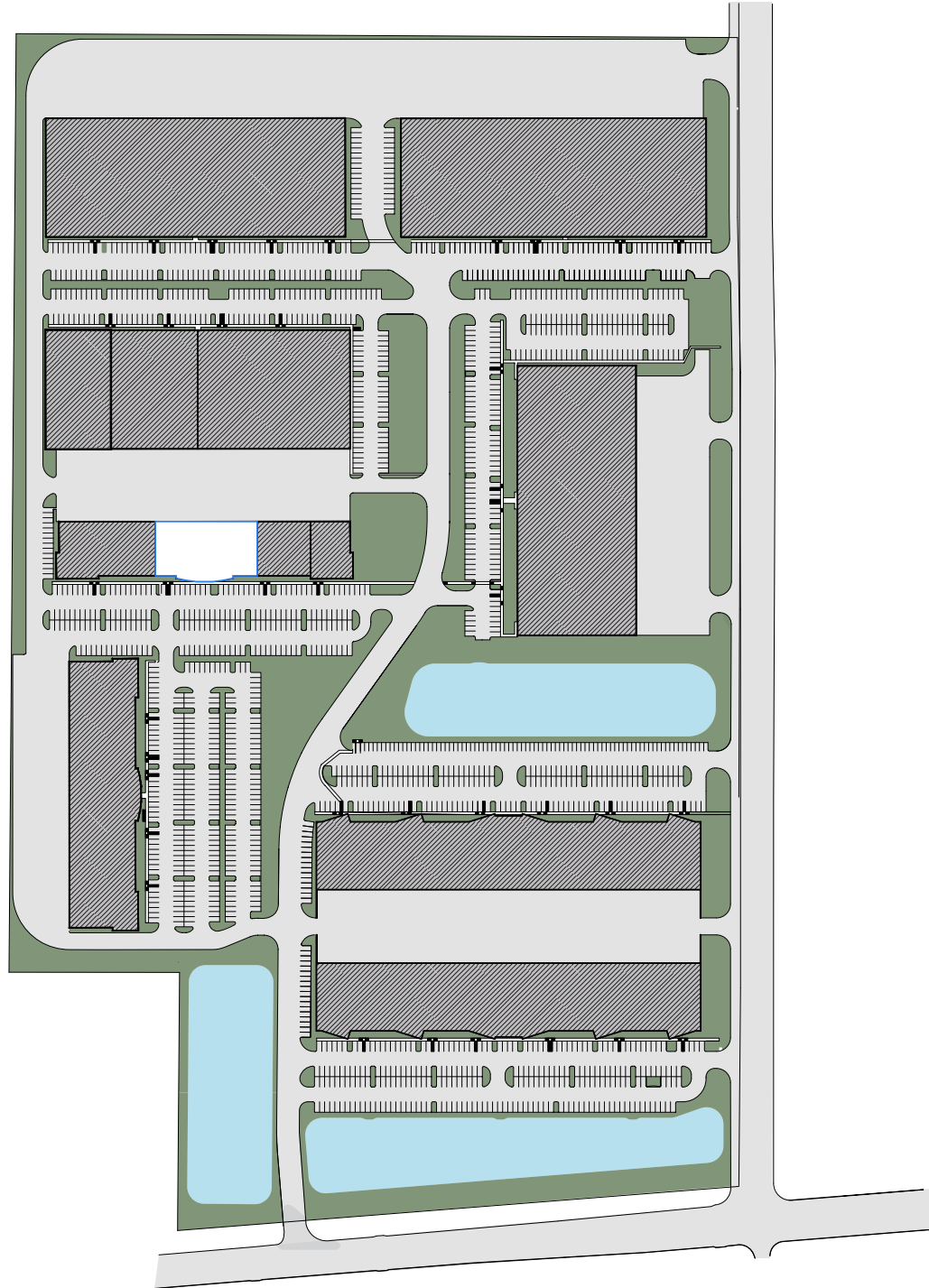
**Brooks Benkendorfer**  
brooksbenkendorfer@hpitx.com  
(512) 848-2582

No warranty or representation, expressed or implied, is made as to the accuracy of the information contained herein, and same is submitted subject to errors, omissions, change of price, rental or other conditions, withdrawal without notice, and to any special listing conditions imposed by the principals.

# Northtech Business Center 8

4616 West Howard Lane - Austin, TX 78728

**Suite 850**  
**22,201 SF**  
**Office/Warehouse**  
**Space**



**Davis Bass**  
bass@hpitx.com  
(512) 203-5130

**Brooks Benkendorfer**  
brooksb@hpitx.com  
(512) 848-2582

No warranty or representation, expressed or implied, is made as to the accuracy of the information contained herein, and same is submitted subject to errors, omissions, change of price, rental or other conditions, withdrawal without notice, and to any special listing conditions imposed by the principals.