



Keegan & Coppin
COMPANY, INC.

FOR LEASE

510 TAMALPAIS DRIVE
SUITE C
CORTE MADERA CA
RARE OFFICE SPACE



Go beyond broker.

REPRESENTED BY:

VESA BECAM, PARTNER
LIC # 01459190 (415) 461-1010, EXT 114
VESA@KEEGANCOPPIN.COM



OFFICE FOR LEASE



510 TAMALPAIS DRIVE
SUITE C

RARE OFFICE SPACE

PROPERTY INFORMATION

HIGHLIGHTS

- Rare small office opportunity
- Exceptional location
- Adjacent to Corte Madera Town Park
- Easy access to Hwy 101

OFFICE SPACE

Suite 510C: 200-868 +/- sq ft

DESCRIPTION

Three small, bright second floor offices
Can be combined for a total of 868 sq ft.
Shared restrooms

DESCRIPTION OF PREMISES

The Park Madera Center represents an outstanding office opportunity, with a truly exceptional location along Corte Madera's principal thoroughfare in Marin County's first shopping center. The property is located at the heart of central Corte Madera, and houses a variety of businesses.

DEMOGRAPHICS

	1 Mile	3 Miles	5 Miles
Total 2020 Population:	9,355	78,467	135,881
Median Household Income:	\$144,461	\$138,738	\$134,150
Median Home Value:	\$1,107,547	\$1,076,466	\$1,066,690

LEASE TERMS

Size

200 - 868 +/- sq ft

Rate

\$3.25 per sq ft

Terms

NNN

Parking

On-site

Zoning

C-1 Local Shopping

Keegan & Coppin Co., Inc.
101 Larkspur Landing Circle, Ste. 112
Larkspur, CA 94939
www.keegancoppin.com
(415) 461-1010

The above information, while not guaranteed, has been secured from sources we believe to be reliable. Submitted subject to error, change or withdrawal. An interested party should verify the status of the property and the information herein.

REPRESENTED BY:

VESA BECAM, PARTNER
LIC # 01459190 (415) 461-1010, EXT 114
VESA@KEEGANCOPPIN.COM



OFFICE FOR LEASE



510 TAMALPAIS DRIVE
SUITE C

RARE OFFICE SPACE

DESCRIPTION OF AREA

Located approximately 12 miles north of San Francisco, Corte Madera is one of the most active commercial communities in Marin County. In addition to its 9,425 residents, all of Marin considers Corte Madera to be its shopping area because of its central location and its prevalence of retailers and service providers.

NEARBY AMENITIES

- Steps from dozens of cafes, shops and restaurants
- Private and public schools, from preschool through high school
- Thriving cultural community
- Two blocks from Corte Madera Town Center
- Minutes from the Village at Corte Madera

TRANSPORTATION ACCESS



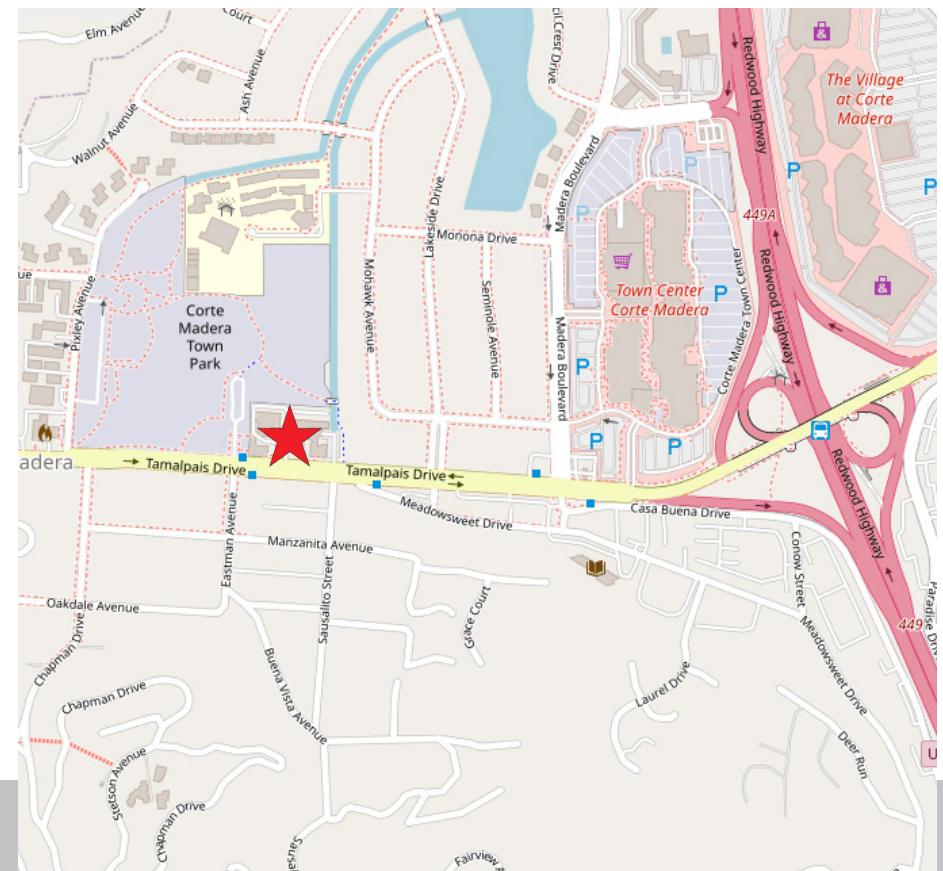
4 minutes



9 minutes



Serviced by Routes 30 and 70



REPRESENTED BY:

VESA BECAM, PARTNER
LIC # 01459190 (415) 461-1010, EXT 114
VESA@KEEGANCOPPIN.COM

Keegan & Coppin Co., Inc.

The above information, while not guaranteed, has been secured from sources we believe to be reliable. Submitted subject to error, change or withdrawal. An interested party should verify the status of the property and the information herein.



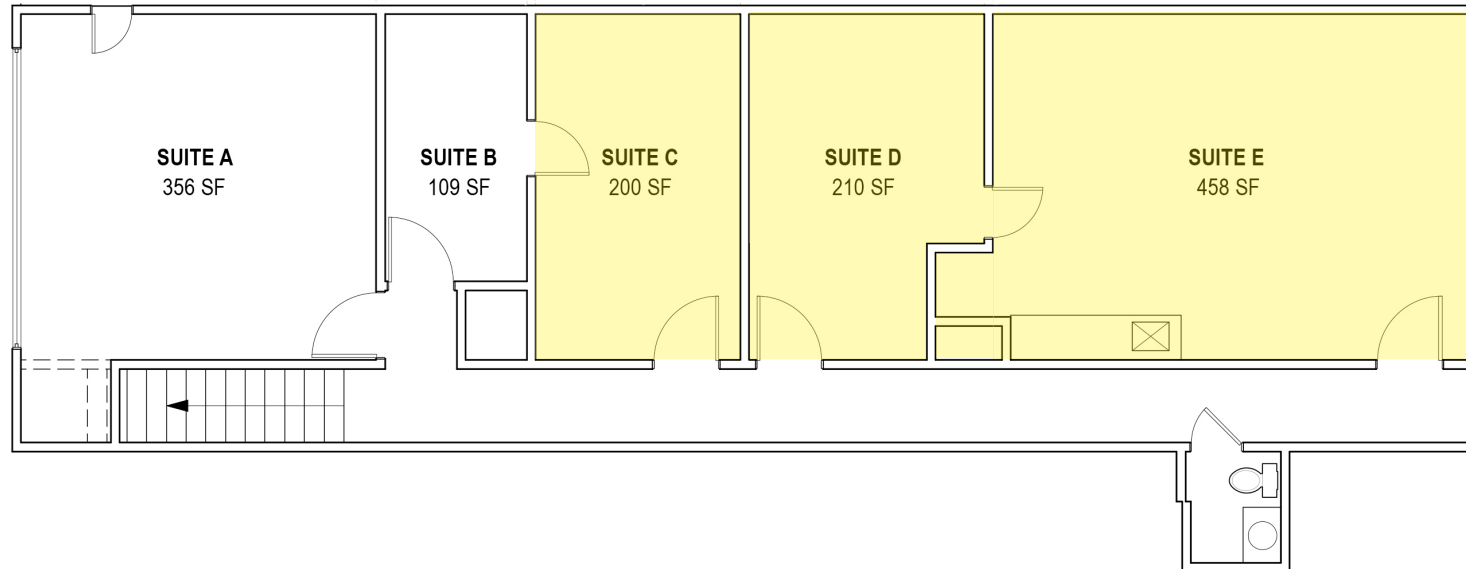
FLOOR PLAN



510 TAMALPAIS DRIVE
SUITE C

RARE OFFICE SPACE

SUITE 510 C
200 - 868+/- SQ FT



REPRESENTED BY:

VESA BECAM, PARTNER
LIC # 01459190 (415) 461-1010, EXT 114
VESA@KEEGANCOPPIN.COM

Keegan & Coppin Company, Inc.

The above information, while not guaranteed, has been secured from sources we believe to be reliable. Submitted subject to error, change or withdrawal. An interested party should verify the status of the property and the information herein.