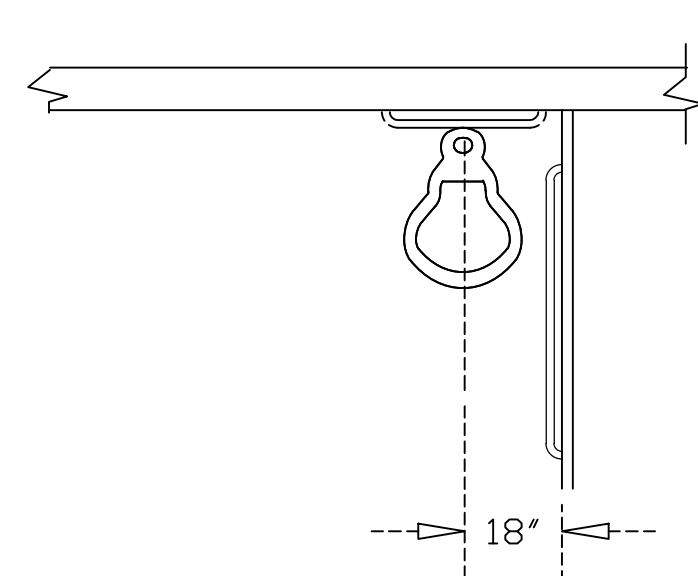
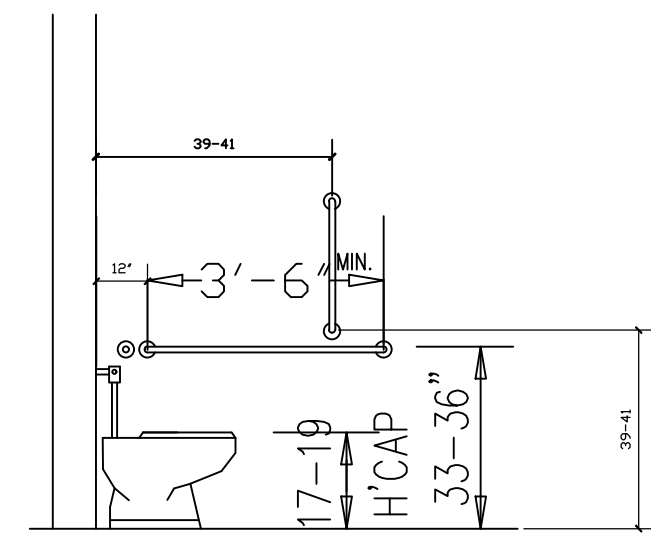


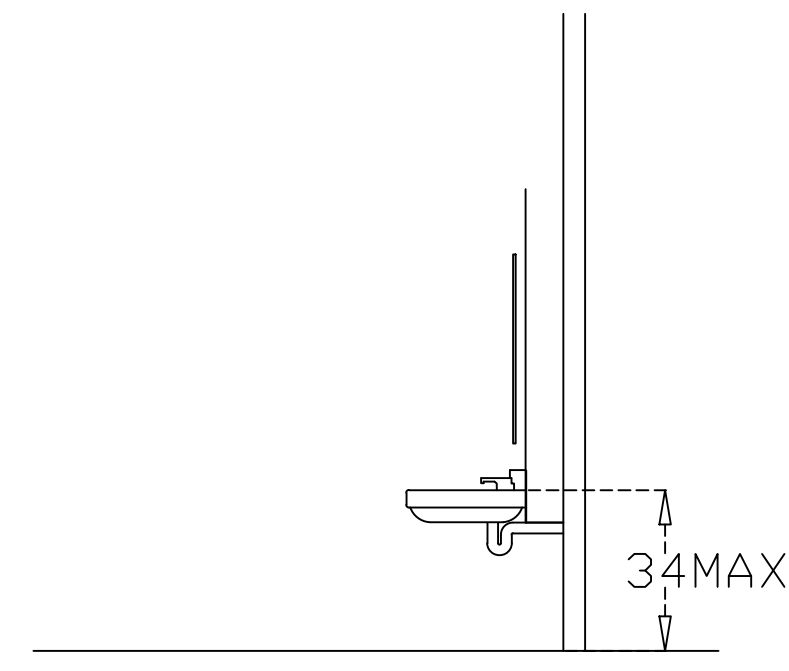
SIDE WALL GRAB BAR FOR WATER CLOSET



FLOOR MOUNTED WATER CLOSET



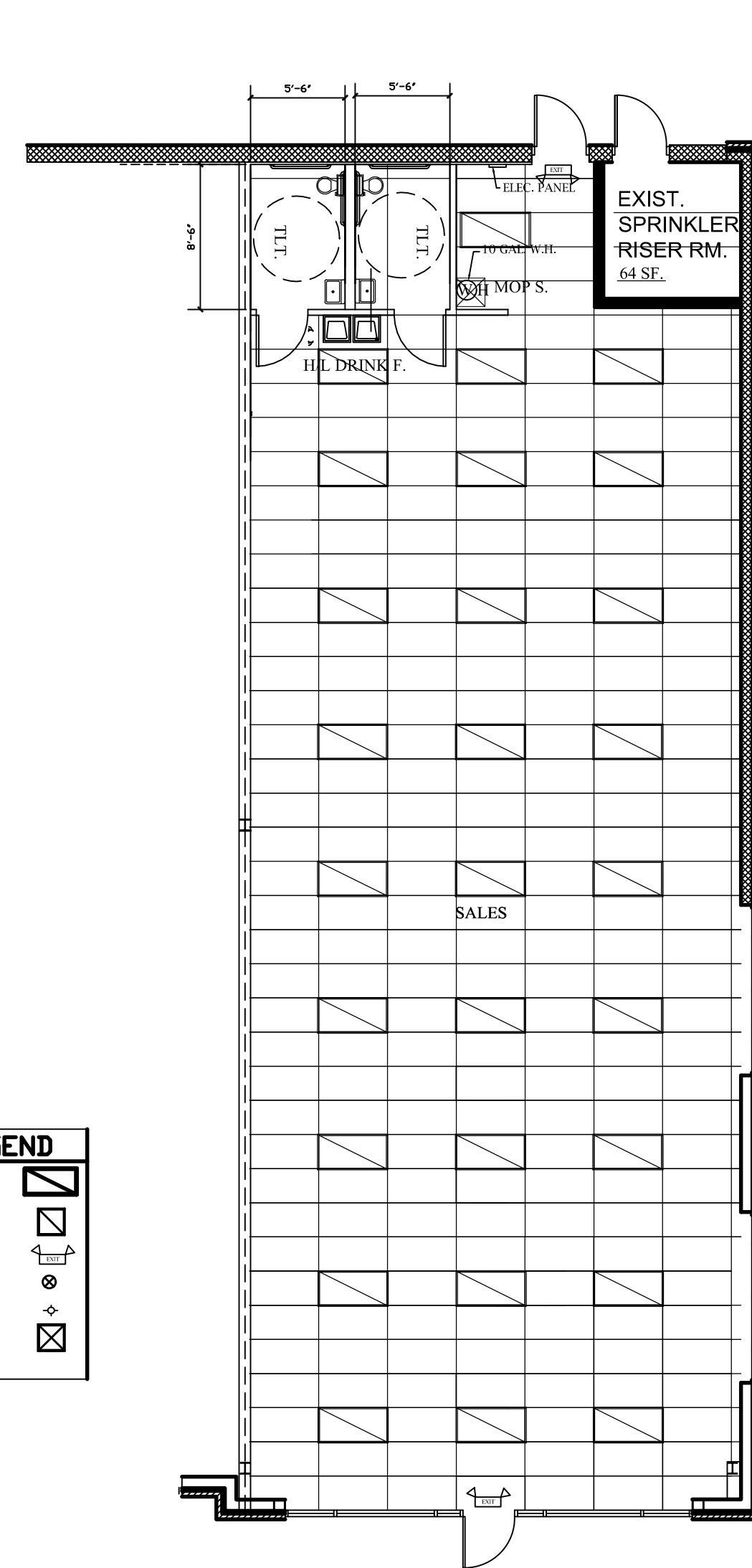
GRAB BARS & WATER CLOSET



HEIGHT OF LAVATORIES AND SINK

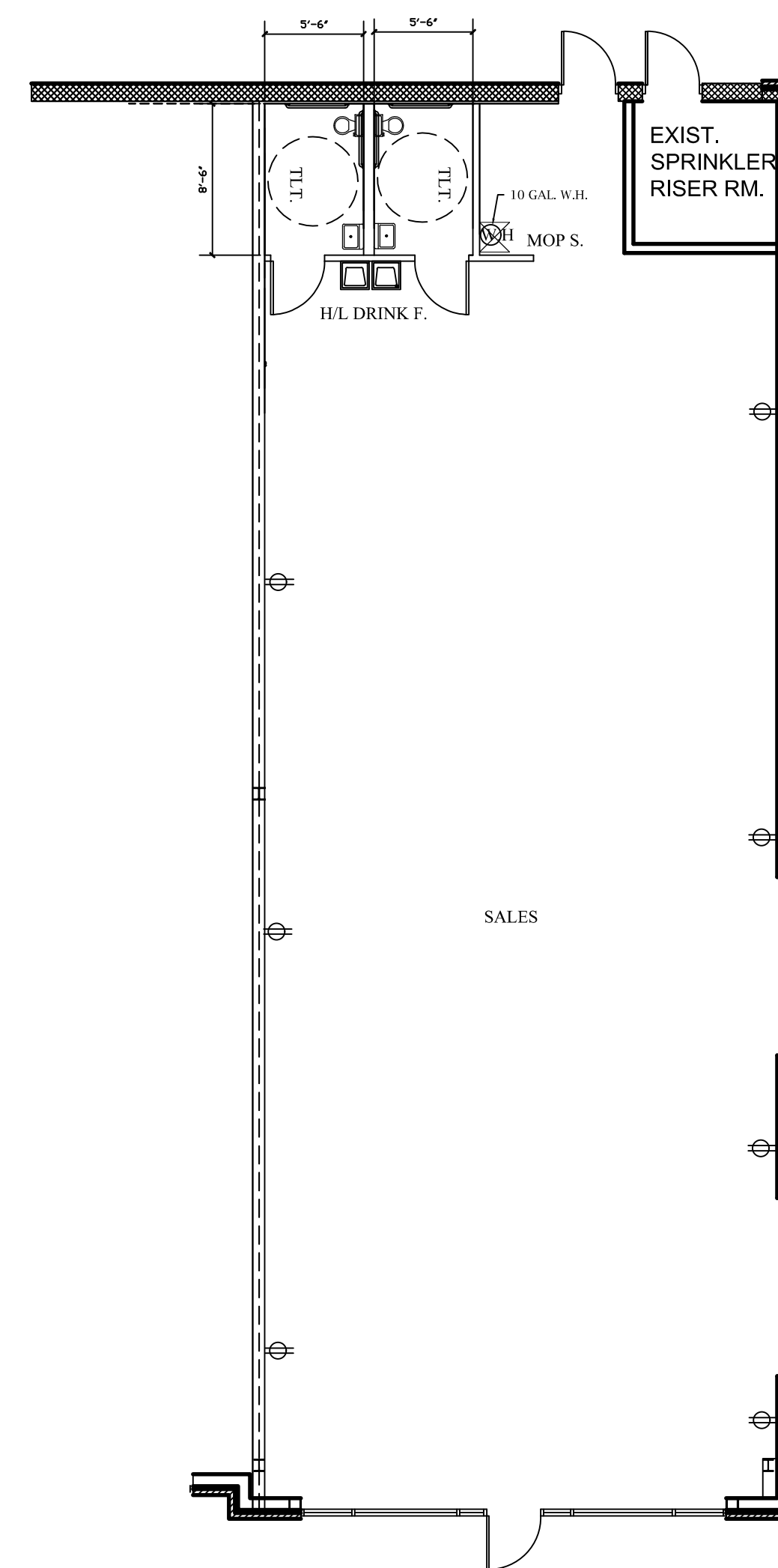
HANDICAPPED PLUMBING FIXTURE DETAILS

DOOR SCHEDULE						
DOORS	DOOR			FRAME		HARDWARE
	DOOR DIMENSIONS	TYP	MATL	TYP	MATL	
BATHROOM	3'-0"X6'-8"X1-3/4"	A	WD.	A	WD	LATCH SET/LEVER HANDLE
STORFRONT (EXISTING)	EXIST. 3'-0"X6'-8"	---	MTL/GLS	---	MTL	LDCK SET/PUSH BAR
REAR EXIT(EXISTING)	3'-0"X6'-8"X1-3/4"	---	MTL	---	MTL	LDCK SET/

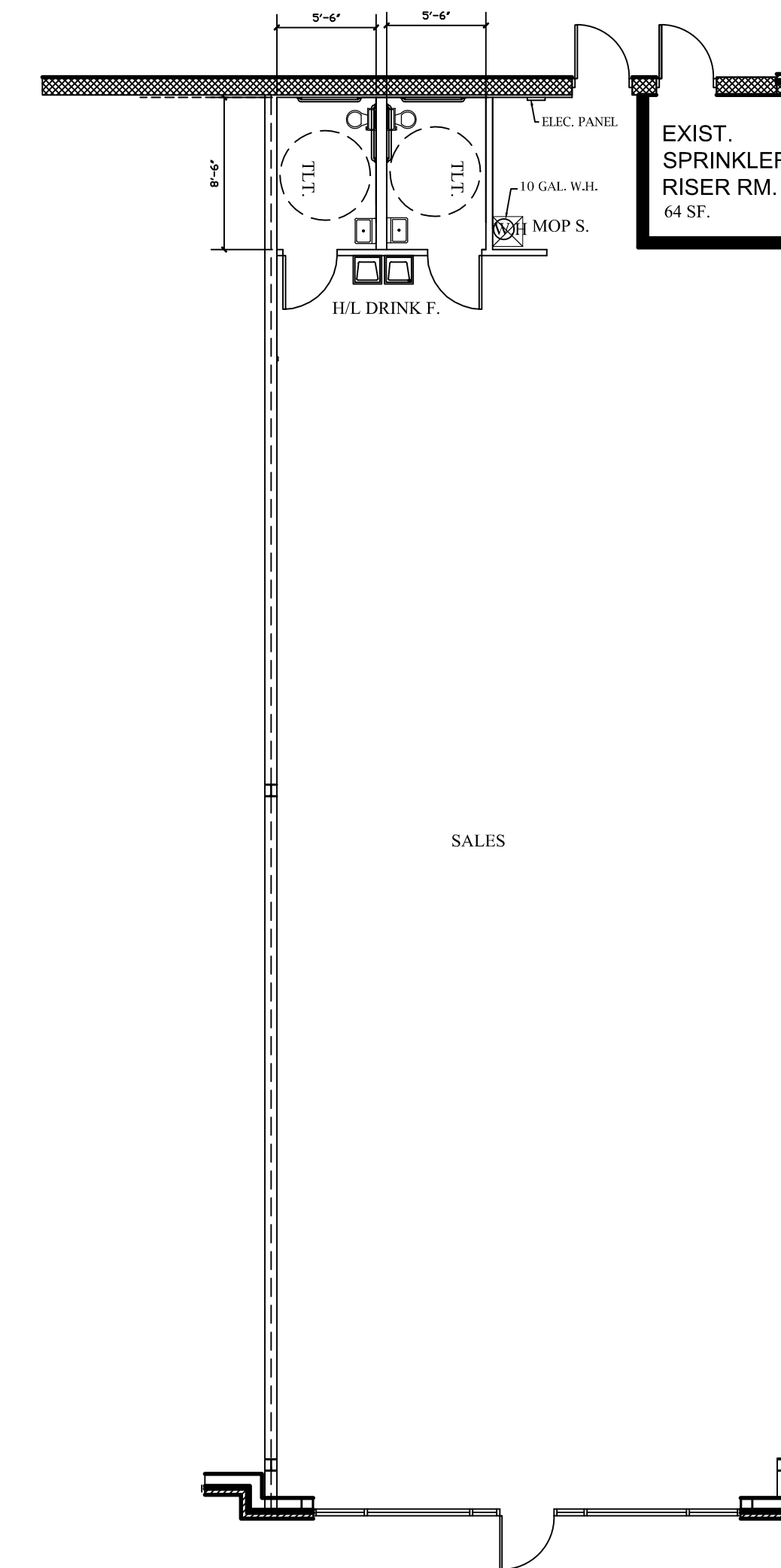


CEILING PLAN
SCALE: 1/8" = 1'-0"

LIGHTING LEGEND	
4x4 FLUORESCENT LIGHTS	
HVAC SUPPLY	
ENTER/EXIT LIGHTS	
EXIT LIGHTS	
NEW CEILING LIGHTS	
EXHAUST FAN	



POWER PLAN
SCALE: 1/8" = 1'-0"



FLOOR PLAN
SCALE: 1/8" = 1'-0"

WALL LEGEND	
NEW 2x4 MTL STUDS WALLS W/ 1/2" GYP. BD. ON EA. SIDE UP TO 6' ABOVE CEILING	
EXIST. 1-HOUR FIRE RATED WALL	

BUILDING CODES USED:

- 2006 International Building Code w/ local amendments
- 2006 International Plumbing Code w/ local amendments
- 2006 International Mechanical Code w/ local amendments
- 2006 International Fuel Gas Code
- 2006 Metro Fire Code (NFPA 1)
- 2006 Life Safety Code (NFPA 101)
- 2011 National Electrical Code
- 2006 International Energy Conservation Code
- 2003 A-117.1 ANSI Handicaped Code

BUILDING CODES CLASSIFICATION:

- 1. OCCUPANCY GROUP: M MERCENTILE
- 2. CONSTRUCTION TYPE: TYPE 2B, UNPROTECTED. SPRINKLERED
- 4. SPACE AREA: 2300 SF.

Revisions

Curtis Architects
1101 GRUNDY ST.
NASHVILLE, TENNESSEE 37203
PH: (615) 586-5107

A TENANT BUILD-OUT FOR:
Mattress King
3881 Lebanon Pk.
Hermitage, Tn.

Drawn	
Job No.	
Filename	
Issued	3-17-2015