



310 E. 2000 N.
TOOELE, UTAH, 84074

For Sale or For Lease 11,500 SF

Property Highlights

- 11,500 SF available
 - 2,335 SF office
 - 9,165 SF warehouse
- Two (2) ground level doors (12'x12' and 10'x12')
- Clear Height: 11' - 16'
- 0.73 acres
- Power: 200 Amps, 480 Volts, 3-Phase
- Fire sprinklered
- Temperature controlled warehouse
- Fully fenced and paved yard with automatic gate
- Frontage on Highway 36 with great visibility
- Minutes from I-80, and Tooele Main Street

For information, please contact:

Chase Omana

Associate

t 801-746-4771

chase.omana@nrmk.com

Lucas M. Burbank

Executive Managing Director

t 801-578-5522

lucas.burbank@nrmk.com

nrmk.com

NEWMARK

The information contained herein has been obtained from sources deemed reliable but has not been verified and no guarantee, warranty or representation, either express or implied, is made with respect to such information. Terms of sale or lease and availability are subject to change or withdrawal without notice.



For information, please contact:

Chase Omana

Associate

t 801-746-4771

chase.omana@nmrk.com

Lucas M. Burbank

Executive Managing Director

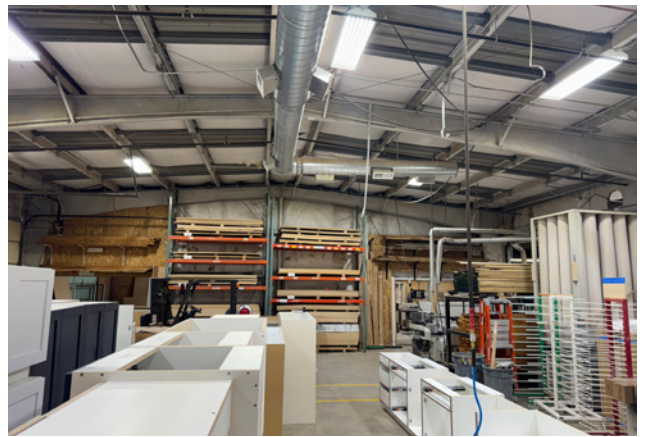
t 801-578-5522

lucas.burbank@nmrk.com

nmrk.com

NEWMARK

The information contained herein has been obtained from sources deemed reliable but has not been verified and no guarantee, warranty or representation, either express or implied, is made with respect to such information. Terms of sale or lease and availability are subject to change or withdrawal without notice.



For information, please contact:

Chase Omana

Associate

t 801-746-4771

chase.omana@nrmk.com

Lucas M. Burbank

Executive Managing Director

t 801-578-5522

lucas.burbank@nrmk.com

nrmk.com

NEWMARK

The information contained herein has been obtained from sources deemed reliable but has not been verified and no guarantee, warranty or representation, either express or implied, is made with respect to such information. Terms of sale or lease and availability are subject to change or withdrawal without notice.



For information, please contact:

Chase Omana

Associate

t 801-746-4771

chase.omana@nmrk.com

Lucas M. Burbank

Executive Managing Director

t 801-578-5522

lucas.burbank@nmrk.com

nmrk.com

NEWMARK

The information contained herein has been obtained from sources deemed reliable but has not been verified and no guarantee, warranty or representation, either express or implied, is made with respect to such information. Terms of sale or lease and availability are subject to change or withdrawal without notice.