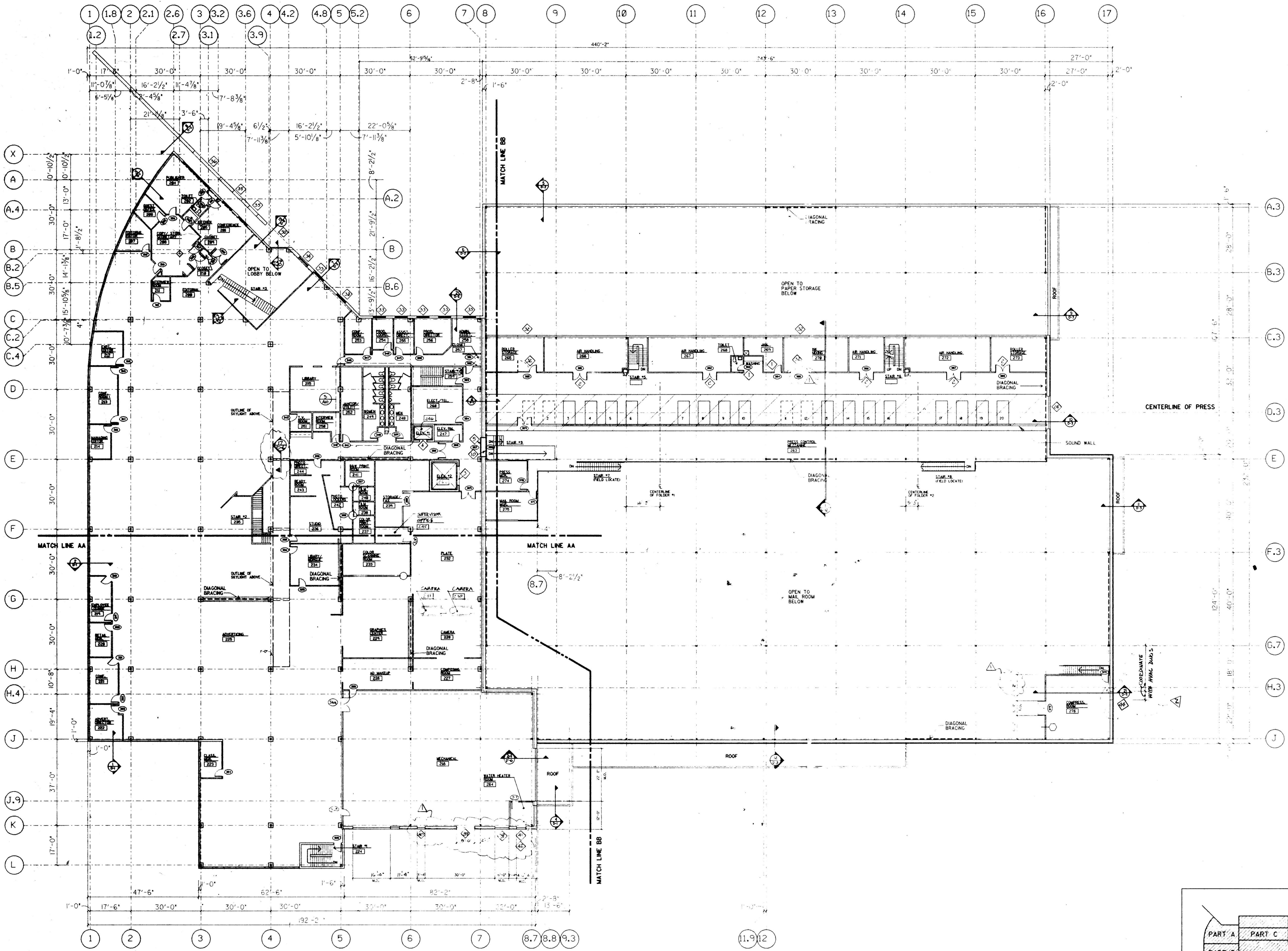


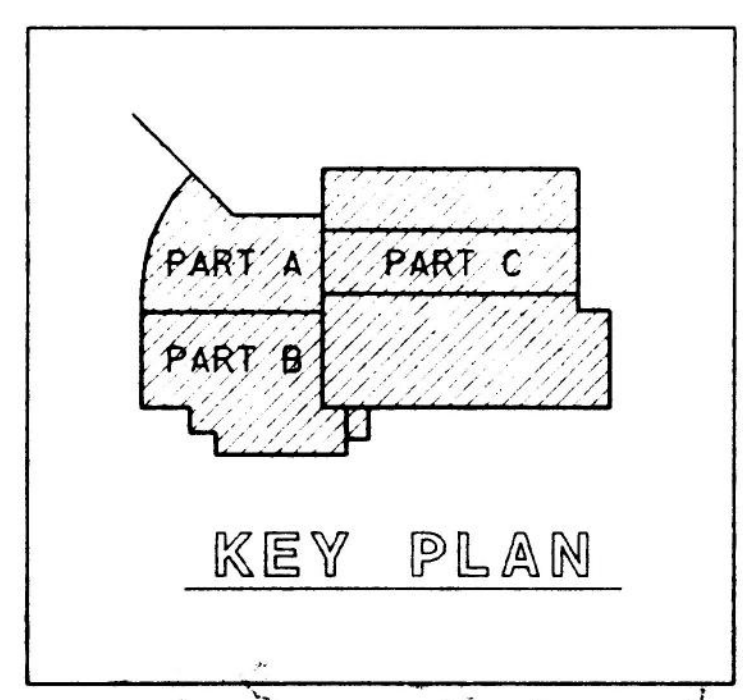


REVISION	DATE	BY	DESCRIPTION
1	10/27/87	SK	GENERAL REVISION
2	11/10/87	SK	GENERAL REVISION
3	12/01/87	SK	GENERAL REVISION
4	12/01/87	SK	GENERAL REVISION
5	12/01/87	SK	GENERAL REVISION
6	12/01/87	SK	GENERAL REVISION
7	12/01/87	SK	GENERAL REVISION
8	12/01/87	SK	GENERAL REVISION
9	12/01/87	SK	GENERAL REVISION
10	12/01/87	SK	GENERAL REVISION
11	12/01/87	SK	GENERAL REVISION
12	12/01/87	SK	GENERAL REVISION
13	12/01/87	SK	GENERAL REVISION
14	12/01/87	SK	GENERAL REVISION
15	12/01/87	SK	GENERAL REVISION
16	12/01/87	SK	GENERAL REVISION
17	12/01/87	SK	GENERAL REVISION



LAST UPDATE OCTOBER 26 1987 39040202

**SECOND FLOOR PLAN**  
SCALE: 1/16" = 1'-0"



**THE NEWS-JOURNAL COMPANY**  
WILMINGTON, DELAWARE  
**SECOND FLOOR PLAN**

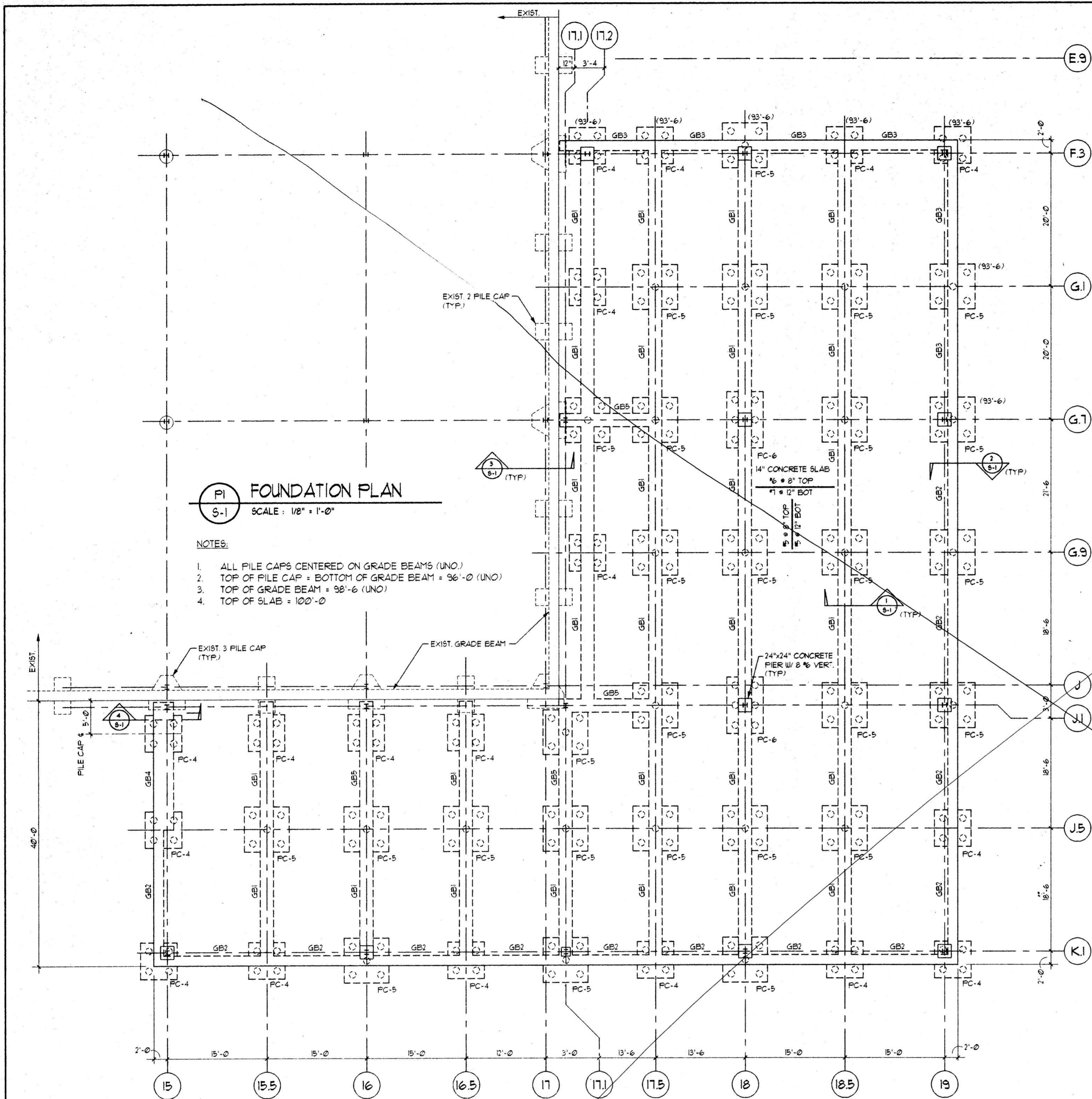
CARLSON ASSOCIATES, INC.  
321 COMMONWEALTH ROAD  
COCHITUATE, MA., U.S.A.  
TEL. 617-969-1200  
TELEX 948346

PLAN NORTH

**A-2**

3904

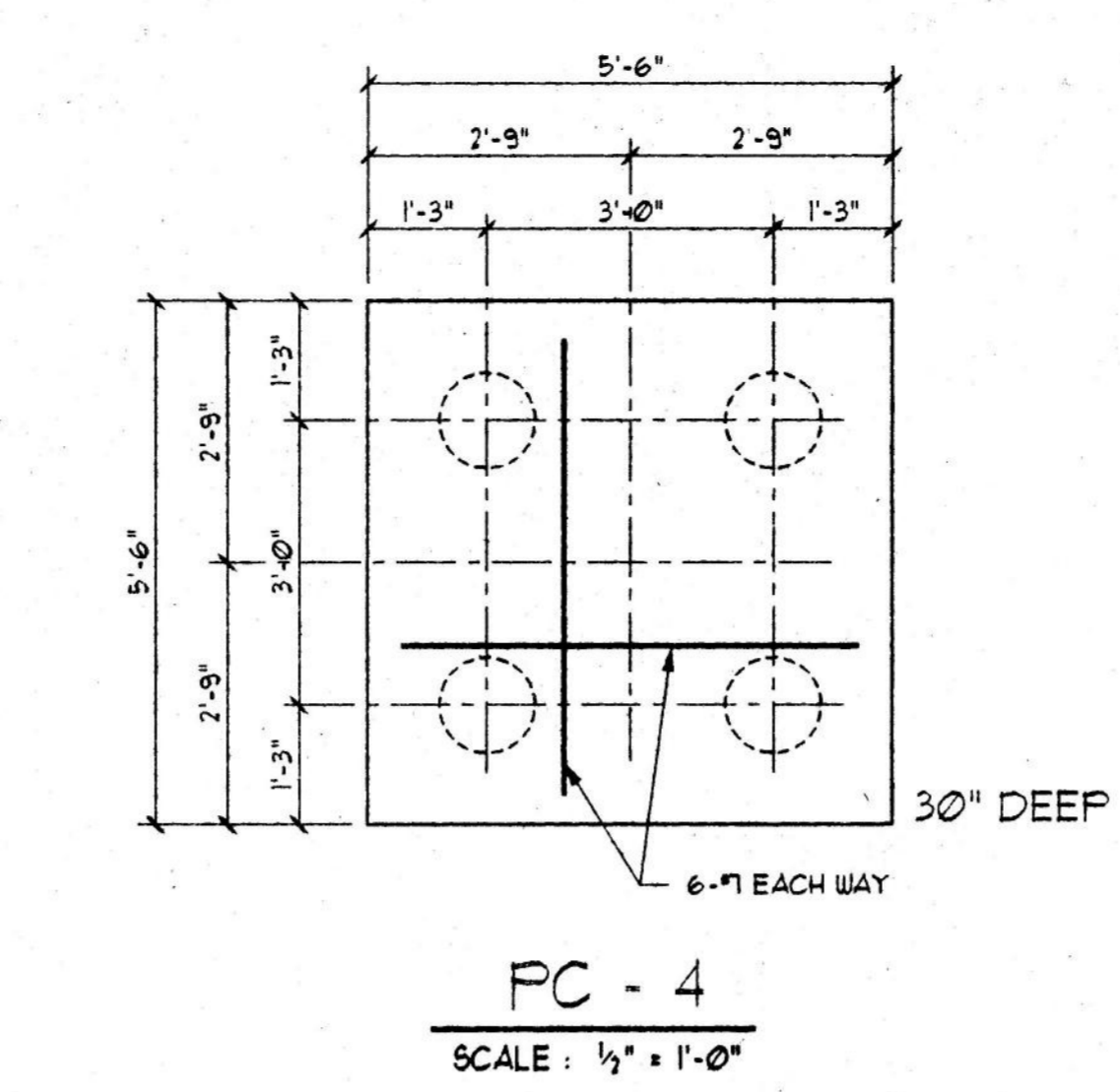
A MEMBER OF THE CARLSON GROUP



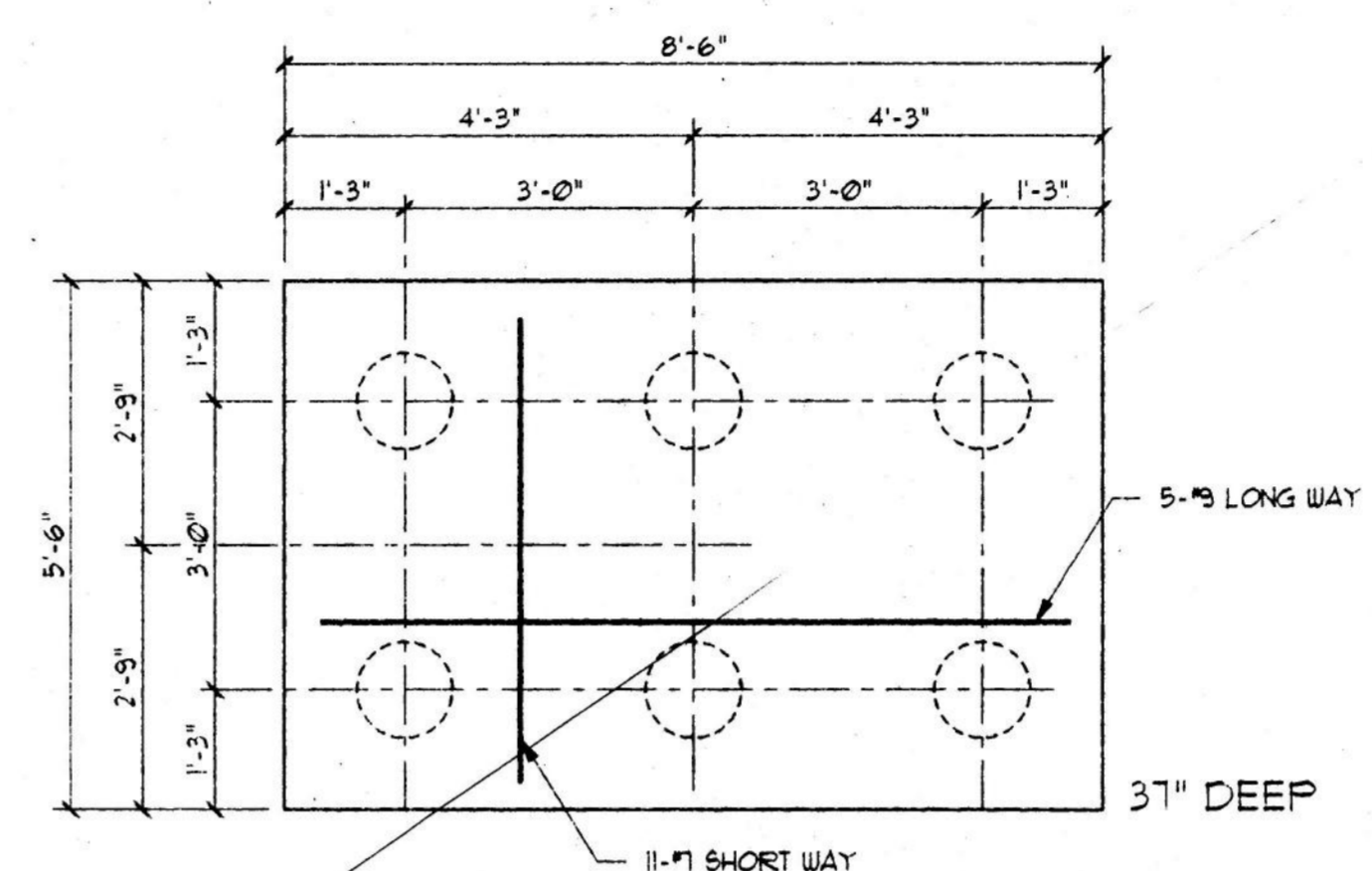
**PI FOUNDATION PLAN**  
S-1 SCALE: 1/8" = 1'-0"

- NOTES:**
1. ALL PILE CAPS CENTERED ON GRADE BEAMS (UNO).
  2. TOP OF PILE CAP = BOTTOM OF GRADE BEAM = 96'-0" (UNO).
  3. TOP OF GRADE BEAM = 98'-6" (UNO).
  4. TOP OF SLAB = 100'-0"

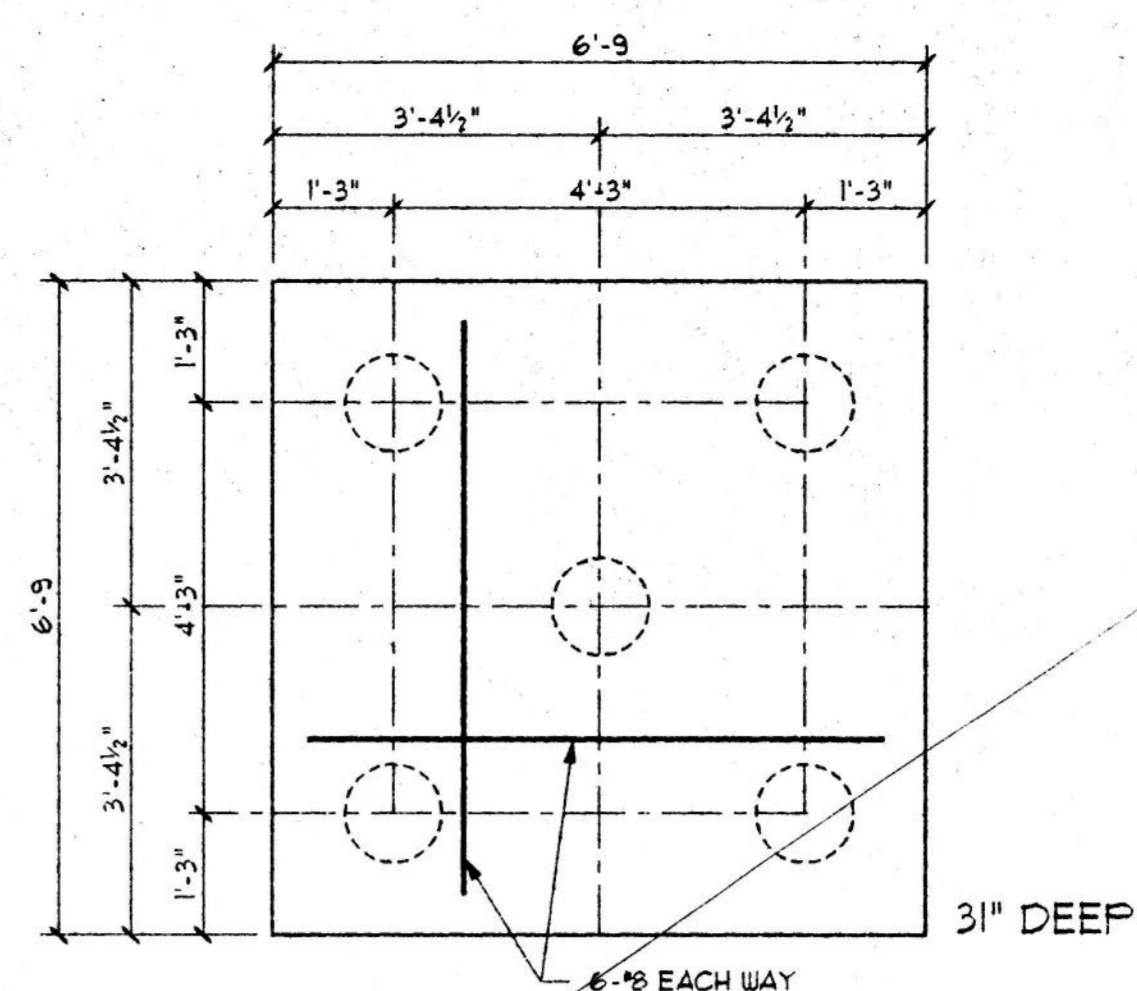
- STRUCTURAL NOTES:**
1. UNO + UNLESS NOTED OTHERWISE.
  2. USE STRUCTURAL DRAWINGS IN CONJUNCTION WITH ARCHITECTURAL DRAWINGS WHICH SHOW OTHER DETAILS NOT SHOWN ON THESE DRAWINGS.
  3. DESIGN LIVE LOADS: ROOF 20 PSF. STRUCTURAL FIRST FLOOR 600 PSF.
  4. SEE SITE PLAN AND ARCHITECTURAL DRAWINGS FOR PROJECT DATUM.
  5. EXISTING CONDITIONS AND MEASUREMENTS SHOWN ON THESE DRAWINGS ARE APPROXIMATE. VERIFY CONDITIONS AND DIMENSIONS PRIOR TO STARTING WORK. IF EXISTING CONDITIONS DIFFER FROM THOSE SHOWN, NOTIFY ARCHITECT IMMEDIATELY.
  6. PROVIDE SHORING AND BRACING TO STABILIZE AND PROTECT EXISTING STRUCTURES AND ONGOING CONSTRUCTION.
  7. BORINGS AND GEOTECHNICAL ANALYSIS WERE PERFORMED BY TERTRA TECH, INC., CHRISTIANA, DELAWARE. THIS INFORMATION IS AVAILABLE FOR CONTRACTOR REVIEW.
  8. WOOD PILES: SOUTHERN PINE OR DOUGLAS FIR MEETING REQUIREMENTS OF ASTM D25. PRESSURE IMPREGNATE WITH CHROMIATED COPPER ARSENATE (CCA) IN ACCORDANCE WITH AMERICAN WOOD PRESERVERS ASSOCIATION (AWPA) STANDARD C3. DRIVE PILES TO 25 TONS SAFE BEARING CAPACITY. CONTRACTOR TO MAINTAIN DRIVING LOGS OF ALL DRIVEN PILES. VIBRATORY HAMMERS AND JETTING NOT PERMITTED.
  9. BACKFILL EXCAVATIONS AND AREAS REQUIRING STRUCTURAL FILL WITH CLEAN, GRANULAR SELECT BORROW (TYPE G, GRADE V OR BETTER), IN ACCORDANCE WITH DELDOT STANDARD SPECIFICATIONS.
  10. CONCRETE: COMPLY WITH AMERICAN CONCRETE INSTITUTE ACI 301 "SPECIFICATION FOR STRUCTURAL CONCRETE FOR BUILDINGS" AND ACI 318 "BUILDING CODE REQUIREMENTS FOR CONCRETE" (LATEST EDITIONS). COMPRESSIVE STRENGTH @ 28 DAYS: 4000 PSI (0.45 MAXIMUM W/C RATIO). REINFORCING STEEL ASTM A618, 60 KSI DEFORMED BARS, 40 KSI FOR TIES. SUBMIT COMPLETE SET OF SHOP DRAWINGS FOR REINFORCING STEEL.
  11. PROVIDE CONCRETE PIERS AS SHOWN. TOPS OF PIERS 18" BELOW TOP OF SLAB. BOTTOM OF PIER EQUALS TOP OF PILE CAP, UNO. CENTER PIERS UNDER COLUMNS UNO. CENTER REINFORCING CAGES UNDER COLUMNS UNO. PROVIDE #3 TIES TOP THREE AT 4" CENTERS, BALANCE AT 12" CENTERS, UNO.
  12. CONCRETE MASONRY: COMPLY WITH AMERICAN CONCRETE INSTITUTE ACI 530 "BUILDING CODE REQUIREMENTS FOR MASONRY STRUCTURES" AND ACI 530.1 "SPECIFICATIONS FOR MASONRY STRUCTURES" (LATEST EDITIONS). HOLLOW LOAD BEARING UNITS ASTM C90 GRADE N TYPE 1. MORTAR ASTM C270 TYPE S. GROUT ASTM C416 OR 3000 PSI FEA GRAVEL CONCRETE REINFORCING STEEL ASTM A15, 60 KSI DEFORMED BARS. HORIZONTAL JOINT REINFORCEMENT ASTM A82 GALVANIZED TRUSS TYPE. ANCHOR MASONRY TO STEEL COLUMNS WITH GALVANIZED ANCHORS AND CHANNELS AT 16" CENTERS VERTICALLY (HOMANN 4 BARNARD 1365 BENT GRIPSTAY ANCHOR AND 1360 CHANNEL UNO).
  13. STRUCTURAL STEEL: COMPLY WITH AMERICAN INSTITUTE OF STEEL CONSTRUCTION "AISC SPECIFICATION FOR THE DESIGN, FABRICATION AND ERECTION OF STRUCTURAL STEEL FOR BUILDINGS" AND "AISC CODE OF STANDARD PRACTICE" (LATEST EDITIONS). SHAPES & PLATES ASTM A36. TYPICAL CONNECTIONS DOUBLE 3/4" ANGLE CLIPS UNO. FASTENERS ASTM A325 BOLTS, 3/4" UNO. WELDS COMPLY WITH AISC D11 "STRUCTURAL WELDING CODE" NONBEARING PLATES, MINIMUM 3/4" THICK. CLEAN STEEL IN ACCORDANCE WITH SSPC SP-3. PRIME WITH SSPC PAINT 13. SUBMIT COMPLETE SET OF SHOP DRAWINGS.
  14. ROOF DECK: COMPLY WITH STEEL DECK INSTITUTE "DESIGN MANUAL FOR FLOOR DECKS AND ROOF DECKS" AND AMERICAN IRON AND STEEL INSTITUTE "SPECIFICATION FOR THE DESIGN OF COLD FORMED STEEL STRUCTURAL MEMBERS" (LATEST EDITIONS). WELDING COMPLY WITH AWS D13 "STRUCTURAL WELDING CODE - SHEET STEEL". PROVIDE 1-1/2" 22 GAUGE WR GALVANIZED ROOF DECK ASTM A446 GRADE E UNO. EXTEND DECK OVER AND CONNECT TO ALL ROOF FRAMING UNO. PROVIDE 20 GAUGE (MINIMUM THICKNESS) GALVANIZED CLOSURE STRIPS, PLATES, AND SHAPES. PROVIDE PLATES, SHAPES, OR STRUCTURAL STEEL ANGLES TO CARRY DECK AT OPENINGS AND AT DISCONTINUITIES IN SUPPORTING STEEL FRAMING. SECURE DECK AND ACCESSORIES TO SUPPORTING STEEL WITH 3/4" RIDDLE WELDS AT 18" CENTERS. FASTEN SIDE LAPS AT 36" CENTERS. SUBMIT COMPLETE SET OF SHOP DRAWINGS.



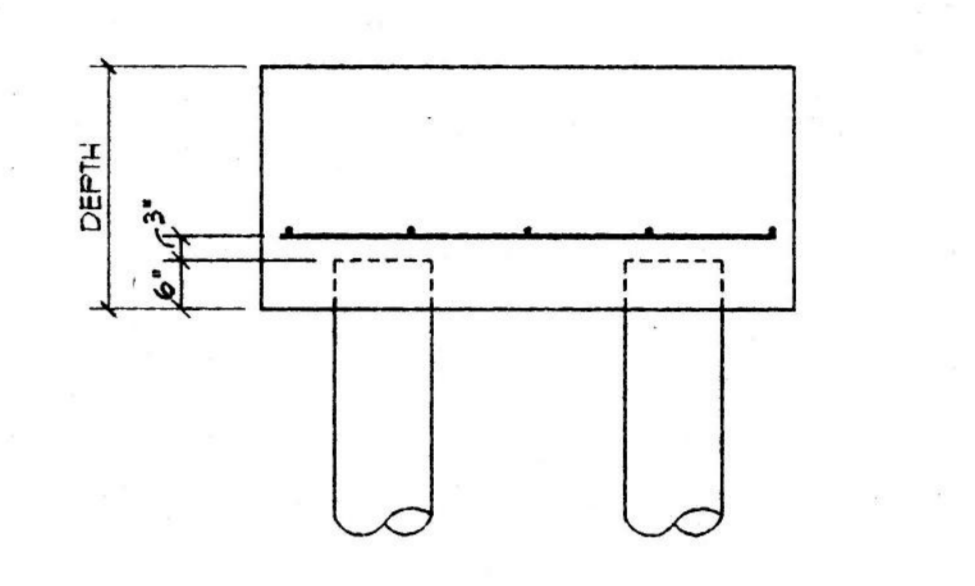
**PC - 4**  
SCALE: 1/2" = 1'-0"



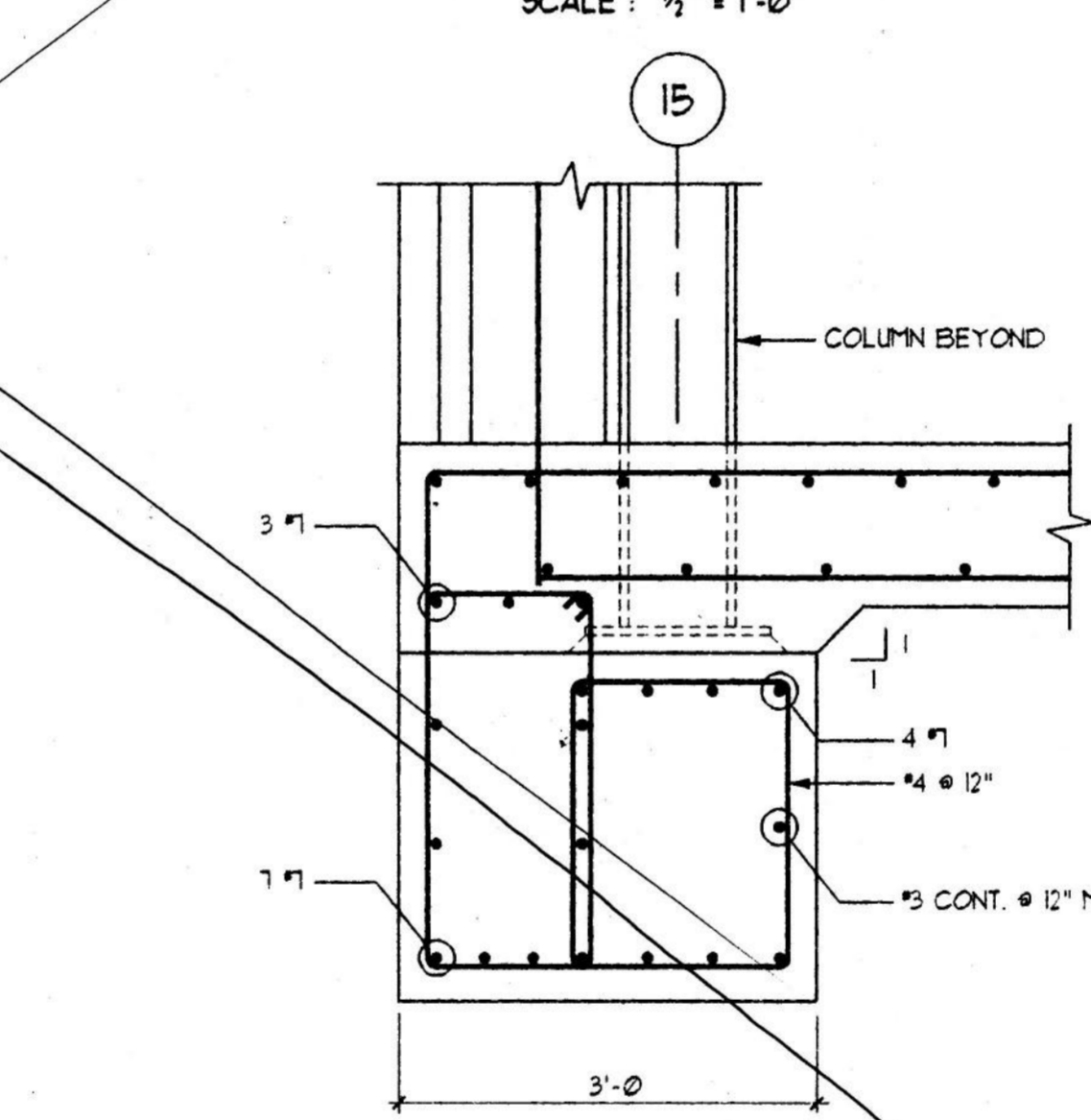
**PC - 6**  
SCALE: 1/2" = 1'-0"



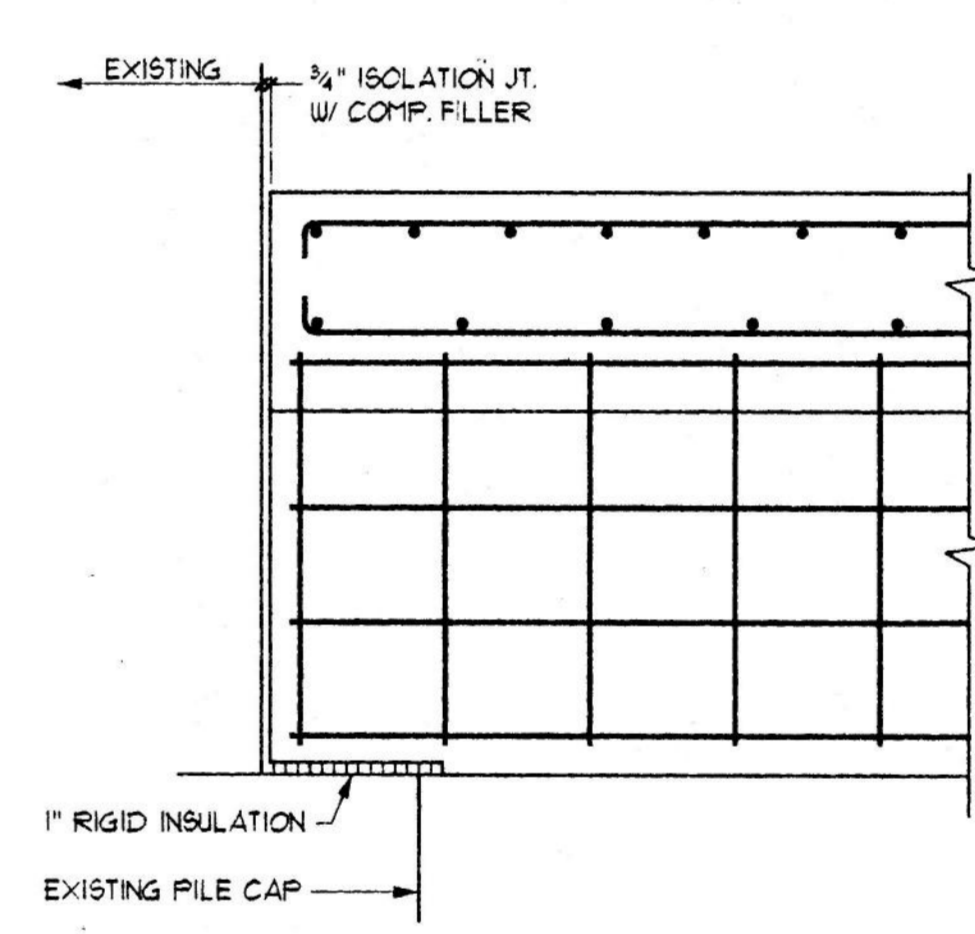
**PC - 5**  
SCALE: 1/2" = 1'-0"



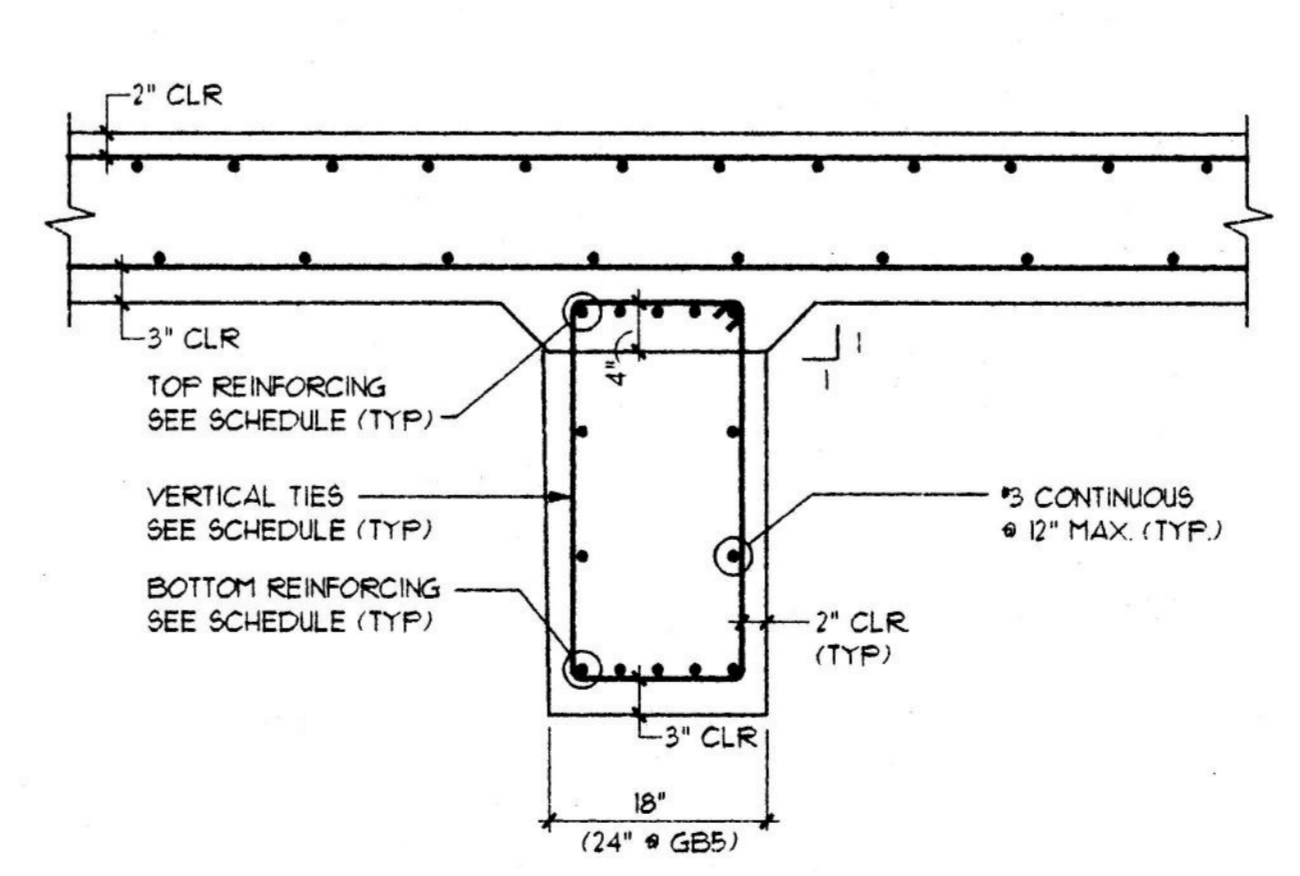
**TYPICAL PILE CAP ELEVATION**  
SCALE: 1/2" = 1'-0"



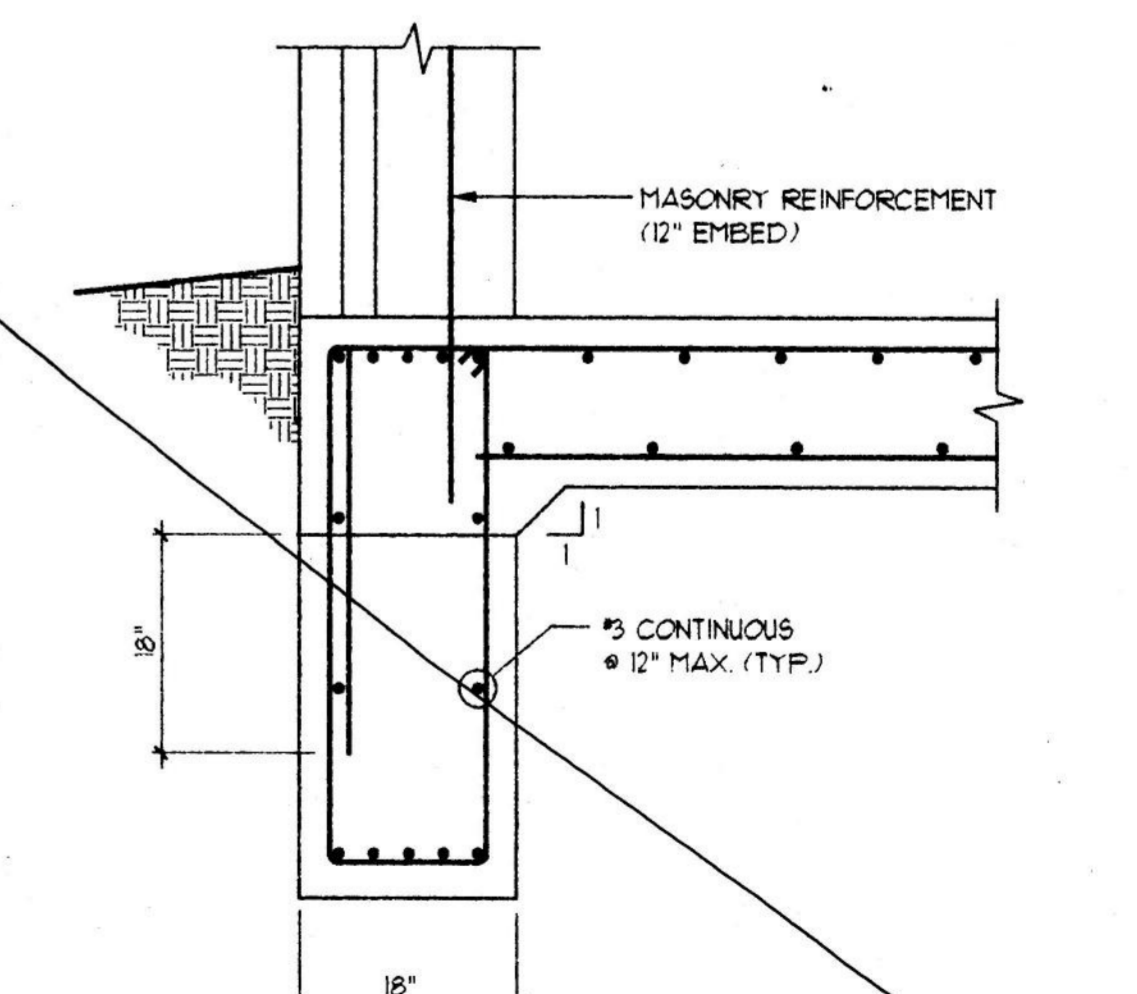
**SECTION 4**  
S-1 SCALE: 3/4" = 1'-0"



**SECTION 3**  
S-1 SCALE: 3/4" = 1'-0"



**SECTION 1**  
S-1 SCALE: 3/4" = 1'-0"



**SECTION 2**  
S-1 SCALE: 3/4" = 1'-0"

**GRADE BEAM SCHEDULE**

MARK	REINFORCING			REMARKS
	TOP	BOT.	TIES	
GB1	5 #8	5 #8		(4) #4 @ 12", #4 @ 16" THEREAFTER
GB2	5 #7	5 #7	#4 @ 16"	
GB3	4 #8	4 #8	#4 @ 16"	
GB4	SEE SECTION 2/S-1			
GB5	5 #7	5 #7	#4 @ 12"	

ISSUED FOR BIDDING AUG. 16, 1995  
FOR REVIEW  
NOT FOR CONSTRUCTION

REVISION/ISSUE DATE

MAILROOM ADDITION  
TO:  
THE NEWS JOURNAL  
NEWSPAPER FACILITY  
NEW CASTLE, DELAWARE

THE NEWS JOURNAL CO.  
950 WEST BASIN ROAD  
NEW CASTLE, DELAWARE 19720  
PHONE (302) 324-2500

STAIKOS ASSOCIATES  
ARCHITECTS  
502 BELL HILL ROAD  
WILMINGTON, DELAWARE 19809  
PHONE (302) 764-1618

PARAGON ENGINEERING  
CORP.  
708 PHILADELPHIA PIKE  
WILMINGTON, DELAWARE 19809  
PHONE (302) 762-6000

BUILTFORM INC.  
5107 GOVERNOR PRINTZ BLVD.  
WILMINGTON, DELAWARE 19809  
PHONE (302) 762-0102

FIELD VERIFY ALL CONDITIONS

RENOVATION PLAN  
FIRST FLOOR &  
PILING PLAN  
DETAILS

DATE: AUGUST 16, 1995  
DRAWN: BFI  
CHECKED: JOG  
SCALE: AS NOTED  
PROJECT NO. 0595  
DUG. NO.