



402 N. 28th Avenue Wausau, WI 54401

Property Features

- Class B+ medical/office/financial services building with ADA access and elevator
- 100 feet of frontage on 28th Avenue
- Well maintained with shop abilities in lower level
- Located in prime medical area of Wausau; across from Aspirus and Marshfield Clinic
- 36 parking stalls now engineered and constructed

Details

This is a quality office/medical facility that is located along the same corridor as Wausau's main medical facilities. The basement area has windows facing east. Also has a garage storage area.

PRICE	\$1,675,000
LEASE RATE	\$17.95/SF NNN
ESTIMATED NNN COSTS	\$6.00-7.50/SF
BUILDING SIZE	6,400 SF (3,200 SF UPPER & 3,200 LOWER)
ACRES	0.809 ACRES
YEAR BUILT	2003
PIN NUMBERS	291-2907-281-0943
2023 TAXES	\$812.62
PARKING	36 STALLS

For more information:

Tony "T.J." Morice, SIOR ([About SIOR](#))

715.218.2900 • tjm@naipfefferle.com



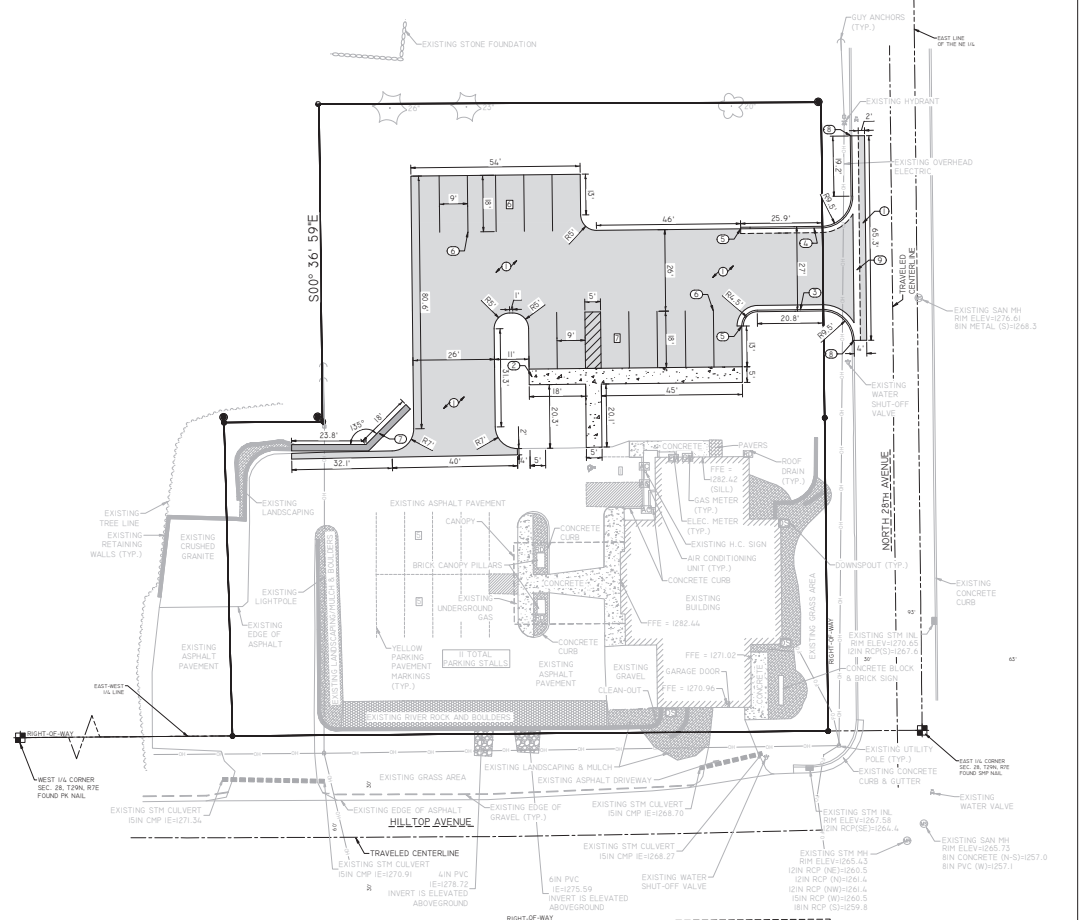
Site Plan

OKEYED NOTES

1. ASPHALT PAVEMENT. SEE DETAIL A/C800.
2. 4" CONCRETE SIDEWALK. SEE DETAIL B/C800.
3. 24" CURB AND GUTTER. SEE DETAIL C/C800.
4. 24" REJECT CURB AND GUTTER. SEE DETAIL C/C800.
5. STANDARD CURB & GUTTER TERMINATION. SEE DETAIL D/C800.
6. PAINTED STRIPING, YELLOW. (TYPICAL)
7. PROPOSED RETAINING WALL.
8. TAPER CURB HEAD TO MATCH EXISTING CURB HEAD.
9. 24" REJECT GUTTER PAN TO MATCH EXISTING ASPHALT.

NOTES:

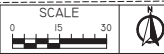
- (A) PARKING SPACES ARE PARALLEL AND PERPENDICULAR TO REFERENCE LINE LABELED, S00°36'59"E, AS TAKEN FROM THE SURVEY.
- (B) ALL DIMENSIONS ARE TO THE BACK OF CURB OR FACE OF INTEGRAL CURB, UNLESS OTHERWISE NOTED.
- (C) PRIVATE & PUBLIC UTILITY COORDINATION INCLUDING GAS, ELECTRIC, AND TELECOMMUNICATIONS SHALL BE COORDINATED BY THE CONTRACTOR.



REI Engineering, Inc.
4280 N. 28th Avenue
Wausau, Wisconsin 54401
Phone: 715.261.2922
Email: mail@reiengineering.com



CIVIL & ENVIRONMENTAL
ENGINEERING, SURVEYING



DATE	REVISION	BY	CHKD

SURVEYED BY: AR
DESIGNED BY: GCS
SURVEY DATE: 10-24-2023
SURVEY CHKD BY: CIVL CHKD BY: JWB
CIVL DATE: 11/08/2023
SURVEY APVD BY: CIVL APVD BY: JWB
DRAIN BY: NAP

SITE PLAN
WALKABOUT PROPERTIES, LLC
402 & 406 NORTH 28th AVENUE
WAUSAU, WISCONSIN

REI No. 2492A
SHEET C100



POPULATION

1 MILE:	3,001
3 MILES:	35,101
5 MILES:	51,833



EMPLOYEES

1 MILE:	9,919
3 MILES:	26,747
5 MILES:	33,260



AVERAGE INCOME

1 MILE:	\$110,672
3 MILES:	\$84,126
5 MILES:	\$92,895



BUSINESSES

1 MILE:	393
3 MILES:	1,468
5 MILES:	2,033



AVERAGE HOUSEHOLDS

1 MILE:	1,315
3 MILES:	15,950
5 MILES:	22,878



TRAFFIC COUNTS

N 28TH AVENUE	8,002
HIGHWAY 52 TOTAL	11,566
US HWY 51 TOTAL	38,904

STATE OF WISCONSIN BROKER DISCLOSURE



Wisconsin law requires all real estate licensees to give the following information about brokerage services to prospective customers.

Prior to negotiating on your behalf the Brokerage firm, or an agent associated with the firm, must provide you the following disclosure statement.

Disclosure to Customers

You are a customer of NAI Pfefferle (hereinafter Firm). The Firm is either an agent of another party in the transaction or a subagent of another firm that is the agent of another party in the transaction. A broker or a salesperson acting on behalf of the Firm may provide brokerage services to you. Whenever the Firm is providing brokerage services to you, the Firm and its brokers and salespersons (hereinafter Agents) owe you, the customer, the following duties:

- The duty to provide brokerage services to you fairly and honestly.
- The duty to exercise reasonable skill and care in providing brokerage services to you.
- The duty to provide you with accurate information about market conditions within a reasonable time if you request it, unless disclosure of the information is prohibited by law.
- The duty to disclose to you in writing certain Material Adverse Facts about a Property, unless disclosure of the information is prohibited by law.
- The duty to protect your confidentiality. Unless the law requires it, the Firm and its Agents will not disclose your confidential information or the confidential information of other parties.
- The duty to safeguard trust funds and other property held by the Firm or its Agents.
- The duty, when negotiating, to present contract proposals in an objective and unbiased manner and disclose the advantages and disadvantages of the proposals.

Please review this information carefully. An Agent of the Firm can answer your questions about brokerage services, but if you need legal advice, tax advice, or a professional home inspection, contact an attorney, tax advisor, or home inspector. This disclosure is required by section 452.135 of the Wisconsin statutes and is for information only. It is a plain-language summary of the duties owed to a customer under section 452.133(1) of the Wisconsin statutes.

Confidentiality Notice to Customers

The Firm and its Agents will keep confidential any information given to the Firm or its Agents in confidence, or any information obtained by the Firm or its Agents that a reasonable person would want to be kept confidential, unless the information must be disclosed by law or you authorize the Firm to disclose particular information. The Firm and its Agents shall continue to keep the information confidential after the Firm is no longer providing brokerage services to you.

No representation is made as to the legal validity of any provision or the adequacy of any provision in any specific transaction.

The following information is required to be disclosed by law:

1. Material Adverse Facts, as defined in section 452.01(5g) of the Wisconsin Statutes (see definition below).
2. Any facts known by the Firm or its Agents that contradict any information included in a written inspection report on the property or real estate that is the subject of the transaction.

To ensure that the Firm and its Agents are aware of what specific information you consider confidential, you may list that information below or provide that information to the Firm or its Agents by other means. At a later time, you may also provide the Firm or its Agents with other information you consider to be confidential.

CONFIDENTIAL INFORMATION

NON-CONFIDENTIAL INFORMATION

(the following information may be disclosed to the Firm and its Agents)

(Insert information you authorize to be disclosed, such as financial qualification information.)

Definition of Material Adverse Facts

A “Material Adverse Fact” is defined in Wis. Stat. 452.01(5g) as an Adverse Fact that a party indicates is of such significance, or that is generally recognized by a competent licensee as being of such significance to a reasonable party, that it affects or would affect the party’s decision to enter into a contract or agreement concerning a transaction or affects or would affect the party’s decision about the terms of such a contract or agreement.

An “Adverse Fact” is defined in Wis. Stat. 452.01(1e) as a condition or occurrence that a competent licensee generally recognizes will significantly and adversely affect the value of the property, significantly reduce the structural integrity of improvements to real estate, or present a significant health risk to occupants of the property; or information that indicates that a party to a transaction is not able to or does not intend to meet his or her obligations under a contract or agreement made concerning the transaction.

Notice About Sex Offender Registry

You may obtain information about the sex offender registry and persons registered with the registry by contacting the Wisconsin Department of Corrections on the Internet at <http://www.doc.wi.gov> or by telephone at 608-240-5830.