



For lease

Highly Adaptable Industrial/Office Building in Premier Woodlake Corporate Park

Woodlake Woodside
901-969 Parkview Blvd
Lombard, IL

 **JLL** SEE A BRIGHTER WAY
Jones Lang LaSalle Midwest, LLC

Woodlake Woodside

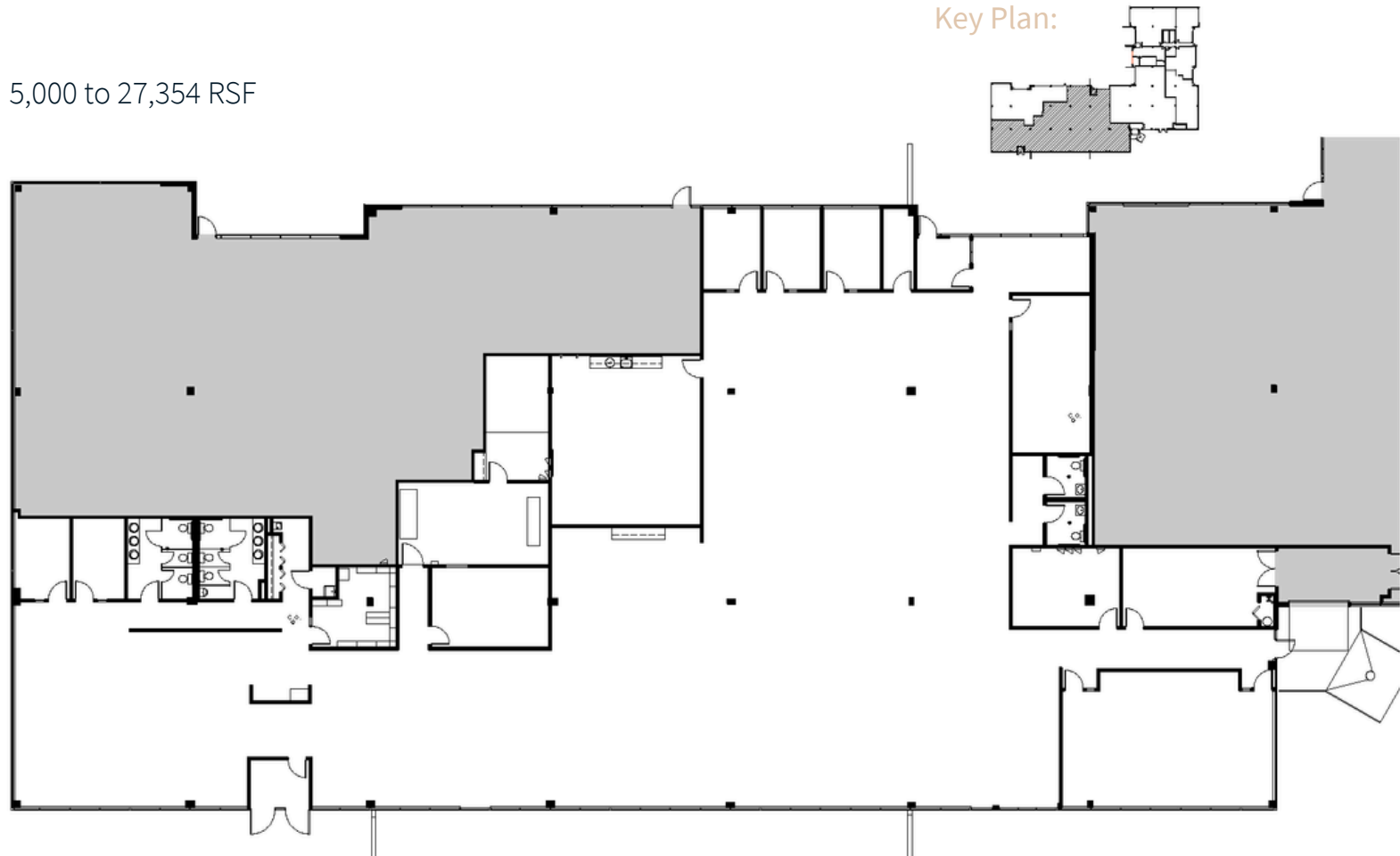
Key Features

- Versatile Design: Ideal for office operations and light assembly with 12' clear ceiling heights
- Flexible Loading Solutions: One common loading dock with provisions for drive-in bay doors to accommodate industrial users
- Superior Connectivity: Prime location just 2 minutes from major highways I-355 and I-88
- Energy-Efficient Systems: Tenant-controlled HVAC with programmable thermostats for optimal energy management
- Complete Amenities: Surrounded by dining, hospitality, recreational golf, and retail options
- Strategically positioned building within the prestigious 35-acre Woodlake Corporate Park. Located just minutes north of the Roosevelt Road interchange on I-355, this property offers unparalleled accessibility and convenience.



- Dock access, 10% warehouse
- Grade level loading available
- Flex space with new LED lighting
- Great window line and natural light
- Kitchen in suite
- Bathrooms in suite
- Divisible to suite, from 5,000 to 27,354 RSF

Key Plan:



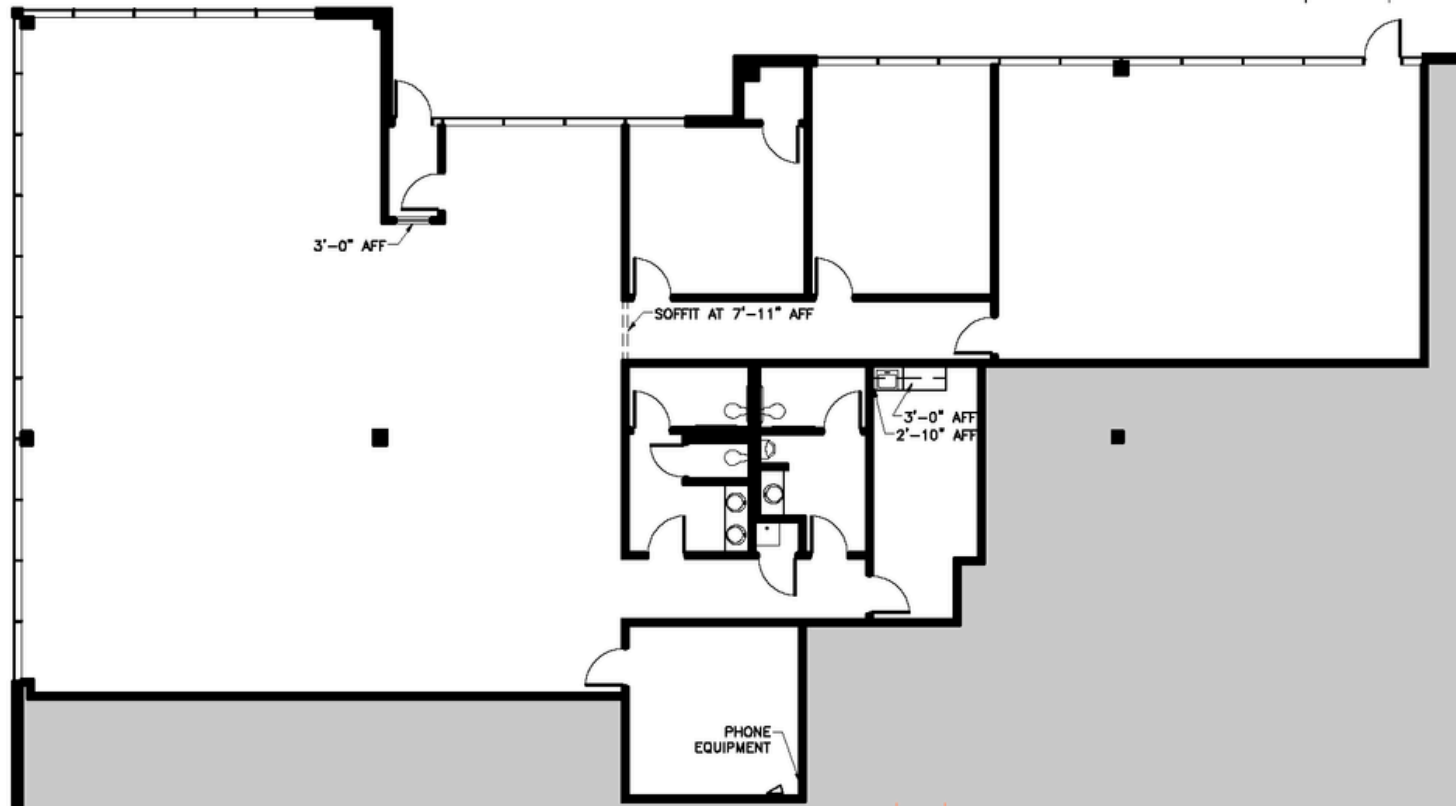
- Dock access, 10% warehouse
- Grade level loading available
- Flex space with new LED lighting
- Great window line and natural light
- Kitchen in suite
- Bathrooms in suite
- Divisible to suite, from 5,000 to 27,354 RSF

Key Plan:



- Great window line and natural light
- Kitchen in suite
- Bathrooms in suite
- Divisible to suite, from 5,000 to 27,354 RSF

Key Plan:



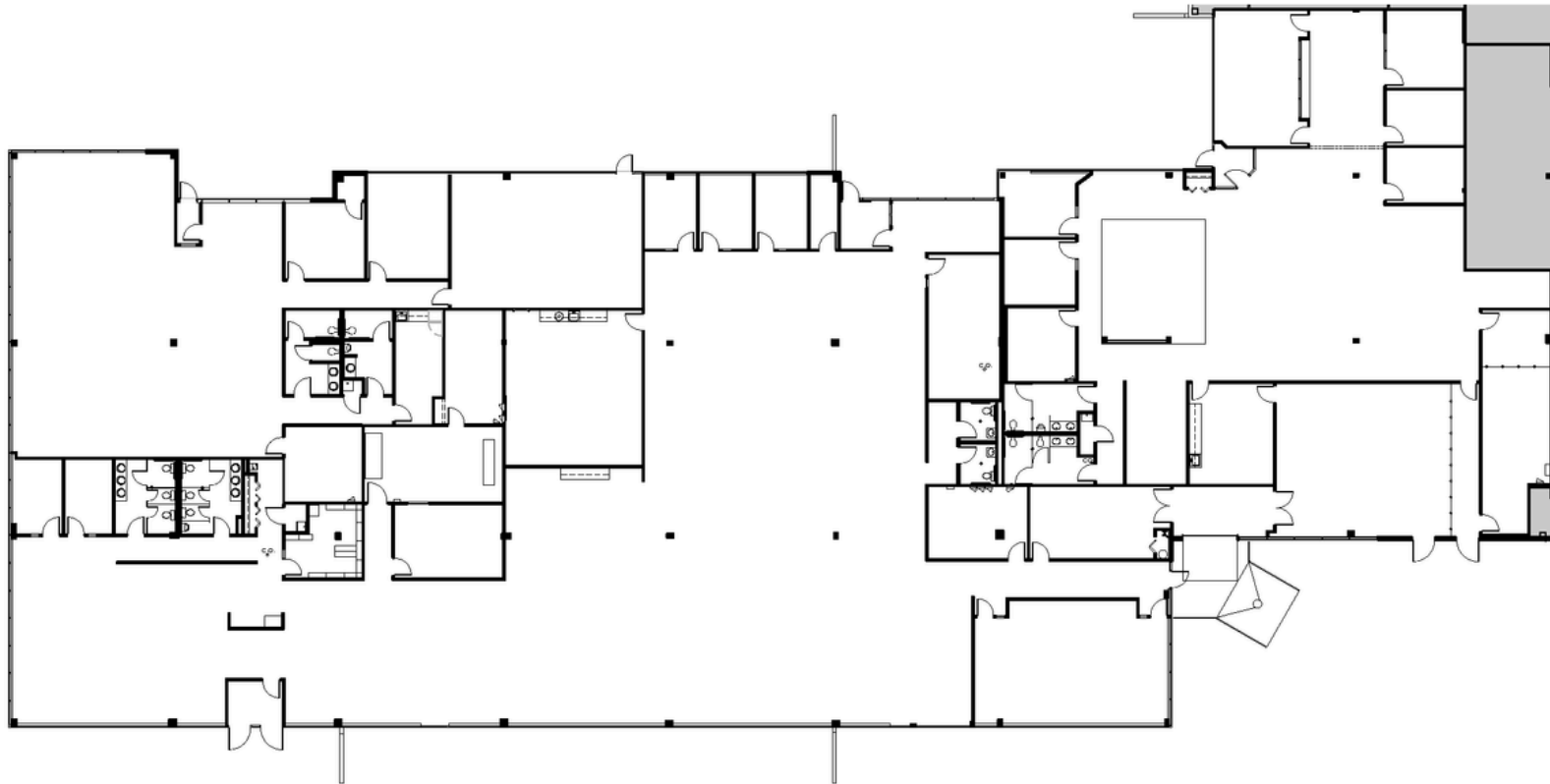
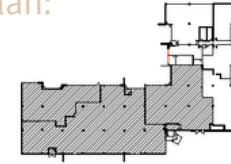
Woodlake Woodside | 901-969 Parkview Blvd | Lombard, IL

Suite 901,905,939

27,354 SF

- Dock access
- Grade level loading available
- Flex space with new LED lighting
- Kitchen in suite
- Bathrooms in suite
- Great window line and natural light
- Divisible to suite, form 5,000 to 27,354 RSF

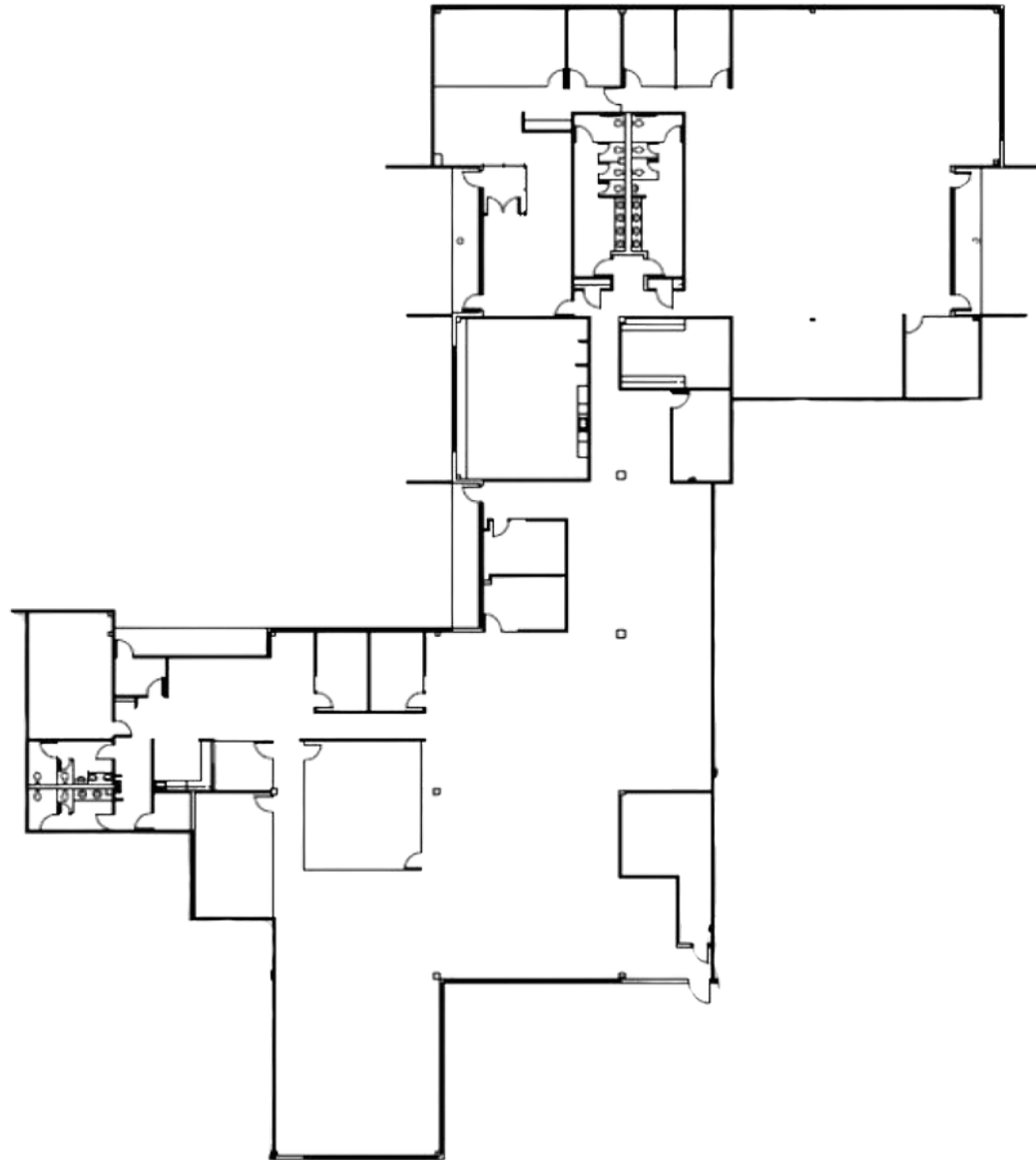
Key Plan:



Woodlake Woodside | 901-969 Parkview Blvd | Lombard, IL

Suite 941
18,635 SF

- High quality existing conditions
- Kitchen in suite
- Bathrooms in suite
- Potential to be converted to flex space
- Great windowline and natural light
- Divisible



Property Photos



Property Photos



Jack Connors

Vice President

jack.connors@jll.com

773 304 4112

jll.com**Allyson Birchmeier**

Vice President

allyson.birchmeier@jll.com

773 632 2511

Although information has been obtained from sources deemed reliable, neither Owner nor JLL makes any guarantees, warranties or representations, express or implied, as to the completeness or accuracy as to the information contained herein. Any projections, opinions, assumptions or estimates used are for example only. There may be differences between projected and actual results, and those differences may be material. The Property may be withdrawn without notice. Neither Owner nor JLL accepts any liability for any loss or damage suffered by any party resulting from reliance on this information. If the recipient of this information has signed a confidentiality agreement regarding this matter, this information is subject to the terms of that agreement. ©2025. Jones Lang LaSalle IP, Inc. All rights reserved

Jones Lang LaSalle Midwest, LLC