

Auto Repair Industrial Property For Lease

1750 Daisy Ave, Long Beach, CA 90813



- +/- 9,840 sf of buildings on +/- 28,500 sf of lot area (tenant to verify)
- Lot area separated into two (2) areas of +/- 7,800 sf & +/- 20,700 sf
- Smaller lot area available separately (tenant to verify use with City of Long Beach)
- Includes two (2) fully permitted spray booths
- Secure yard area with gated entry
- Flexible metal warehouses that can accommodate a variety of users
- 3 phase, 480-amp power (to be verified)
- Excellent access to 710, 405 & 91 freeways
- Surrounded by industrial users while close to Port area & downtown Long Beach
- Clear height ranges from approx. 17 ft to 20 ft – (tenant to verify)
- IG Zoning (tenant to verify use with City of Long Beach)
- Ideal for auto repair or body shop - *existing equipment available*



Jason W. Cox, CCCIM, Broker (CA DRE#01201316)

562.394.3706 jc@ccrasocal.com ccrasocal.com

Site Pictures



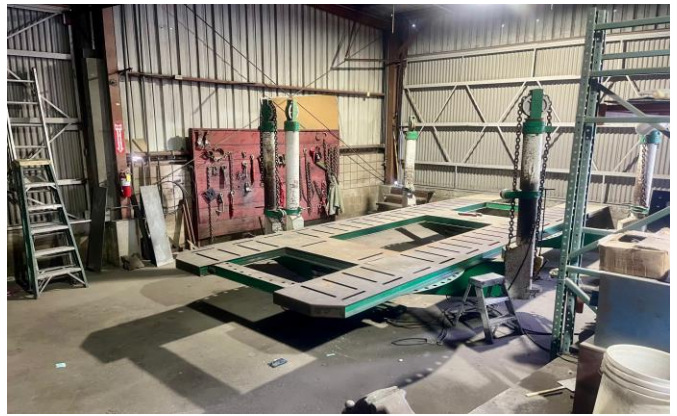
Flexible metal buildings



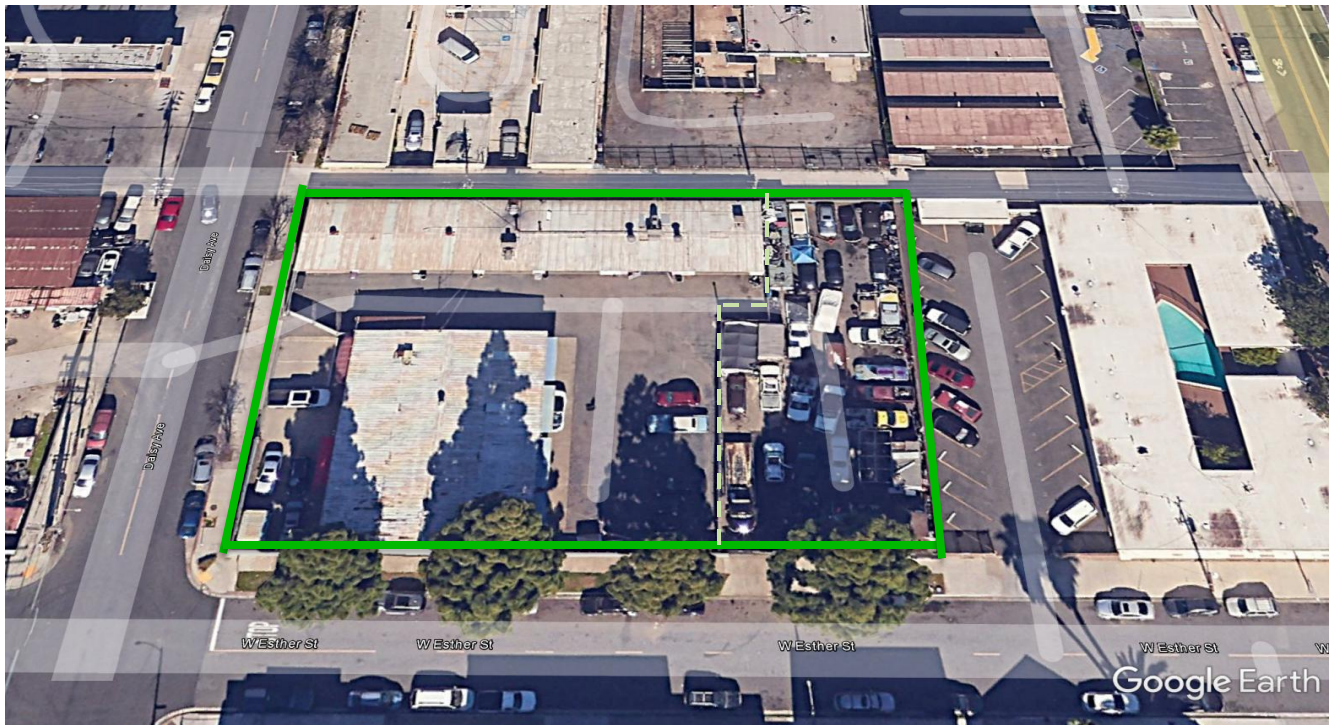
Oversized loading doors and parking / yard area



Interior of warehouse / shop



Warehouse interior



Although we do not doubt this information, CCRA Inc does not warrant or represent its accuracy and strongly suggest those reviewing this property to perform their own independent investigations.