

2,128 SF

Medical/Office Space For Sale or Lease



1630 CAMPUS PARK DRIVE, SUITE C

MONROE, NC



PROPERTY OVERVIEW

- » Sale Price: \$510,000
- » Lease Rate: \$22.00 NNN
- » Total SF: 2,128 (100% office)
- » Parcel ID: 09156003E
- » Deeded Acres: 0.049
- » Zoning: MD-MX (Medical district mixed-use)

HIGHLIGHTS

- » 4 observation rooms with a full bathroom and shower
- » 1 office
- » 1 exam room
- » Records room
- » Reception area
- » Waiting room
- » Break area
- » Formerly used as a sleep medicine practice
- » Conveniently located just off Hwy 74 near Atrium Health Medical Campus

Contact

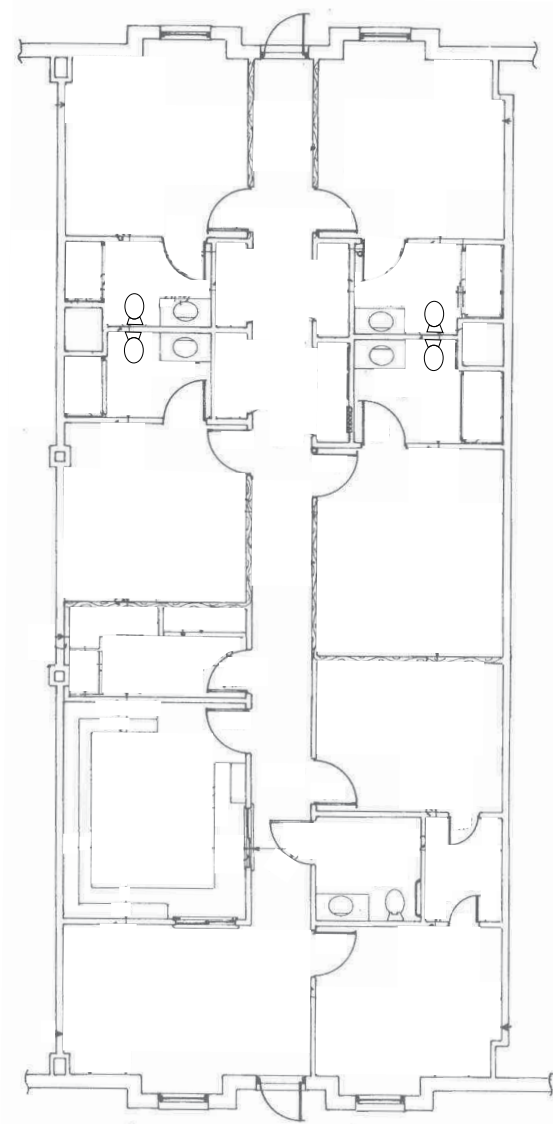
EMILY CLINE
704.280.1314
ecline@trinity-partners.com



2,128 SF

Medical/Office Space For Sale or Lease

1630 CAMPUS PARK DRIVE, SUITE C
MONROE, NC



Contact

EMILY CLINE
704.280.1314
ecline@trinity-partners.com

The information contained herein has been provided by the property owner and is deemed reliable but not guaranteed. All square footages, dimensions, features, and specifications are believed to be accurate to the best of current knowledge but are subject to change without notice. Prospective purchasers or tenants should independently verify all information and conduct their own due diligence. The broker makes no representations or warranties, express or implied, regarding the property.

TRINITY
PARTNERS