

± 42,000 SF INDUSTRIAL SPACE FOR SUBLEASE

2525 Workman Mill Road, City of Industry, CA



SPACE FEATURES

±42,000 SF Sublease Through February 29, 2028

±4,470 SF of Office

24' Min Clear Height

6 Dock High Doors, 1 GL Door

.415/4,000 GPM Sprinkler System

400 amps, 277/480 volts, 3 phase, 4 wire

Free Standing Industrial Building



ETHAN FLOR
Director
(909) 300-4515
ethan@macleodco.com



JC CASTILLO
(949) 413-9396
jc@macleodco.com
LIC. #02132021



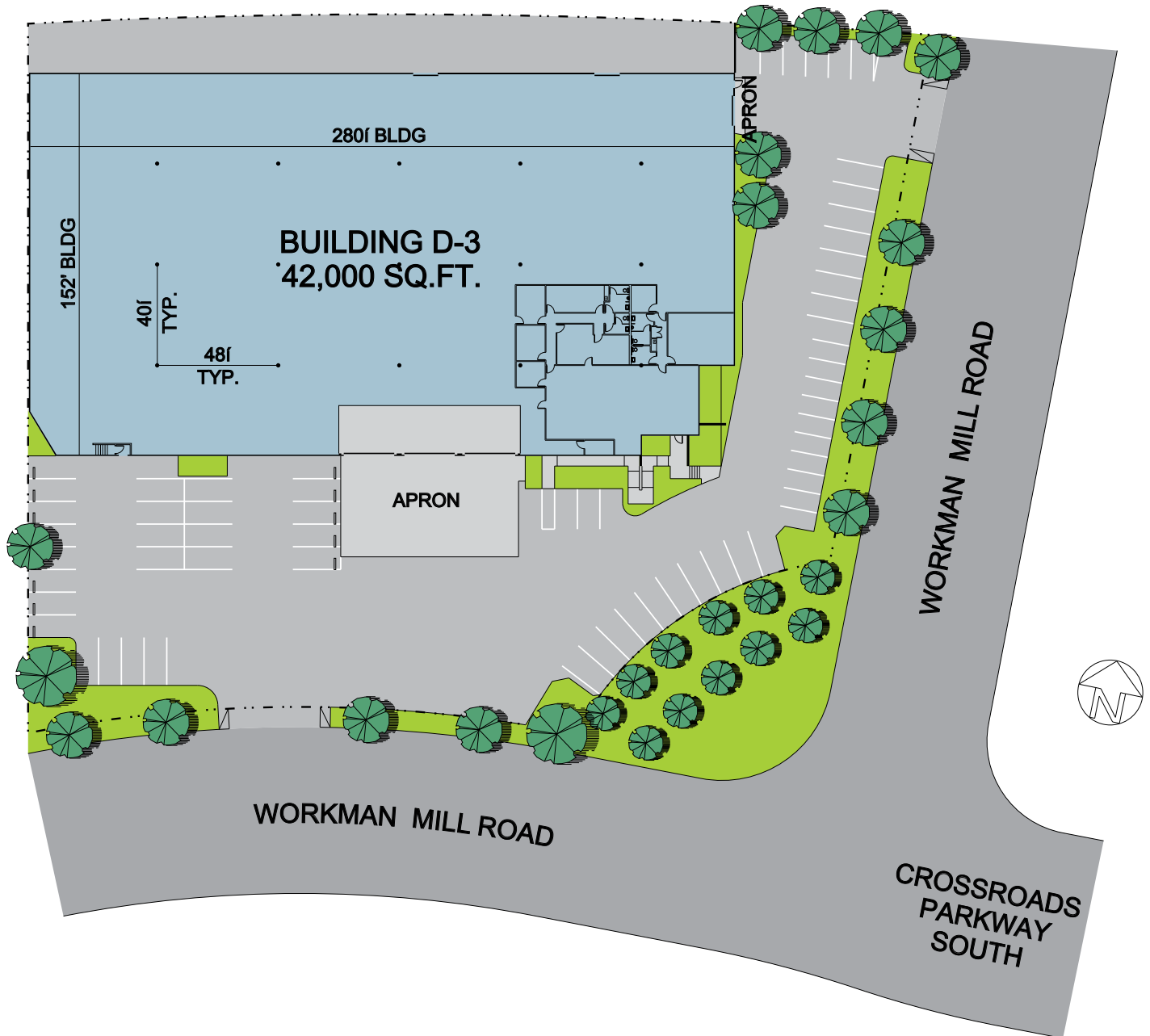
CHASE MACLEOD
Founder
(949) 783-7707
chase@macleodco.com



MACLEOD & CO.

± 42,000 SF INDUSTRIAL SPACE FOR SUBLEASE

2525 Workman Mill Road, City of Industry, CA



ETHAN FLOR
Director
(909) 300-4515
ethan@macleodco.com



JC CASTILLO
(949) 413-9396
jc@macleodco.com
LIC. #02132021



CHASE MACLEOD
Founder
(949) 783-7707
chase@macleodco.com



MACLEOD & CO.