



For Lease

Tami Walker

208 420 4601
tami.walker@colliers.com

Jerrika Gonzalez

208 344 6516
jerrika.gonzalez@colliers.com

205 Shoshone Street N, Suite 201
Twin Falls, Idaho 83301
208 910 2006
colliers.com/idaho

205 Shoshone Street Twin Falls, Idaho

Highlights:

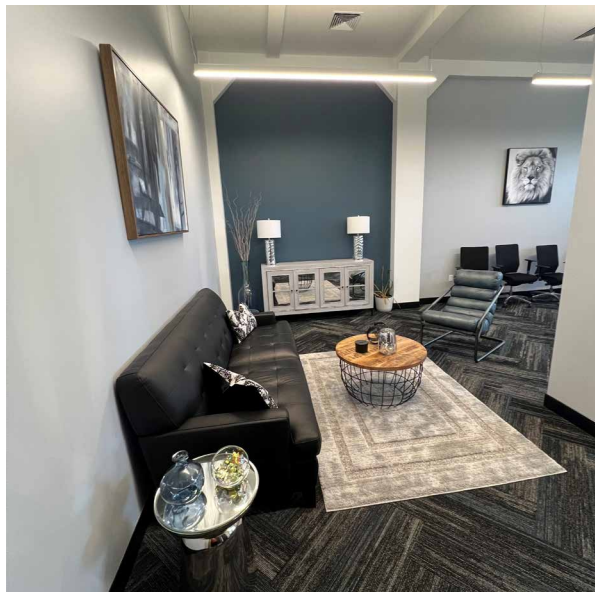
- Suite 202 and Basement Suite available
- Desirable Downtown location
- Professional office building
- Brick and masonry free standing building
- Home to Milner's Gate
- Beautifully remodeled interior
- Natural light
- Shared breakroom

This document has been prepared by Colliers for advertising and general information only. Colliers makes no guarantees, representations or warranties of any kind, expressed or implied, regarding the information including, but not limited to, warranties of content, accuracy and reliability. Any interested party should undertake their own inquiries as to the accuracy of the information. Colliers excludes unequivocally all inferred or implied terms, conditions and warranties arising out of this document and excludes all liability for loss and damages arising there from. This publication is the copyrighted property of Colliers and /or its licensor(s). © 2025. All rights reserved. This communication is not intended to cause or induce breach of an existing listing agreement. Colliers Magic Valley, LLC.

For Lease

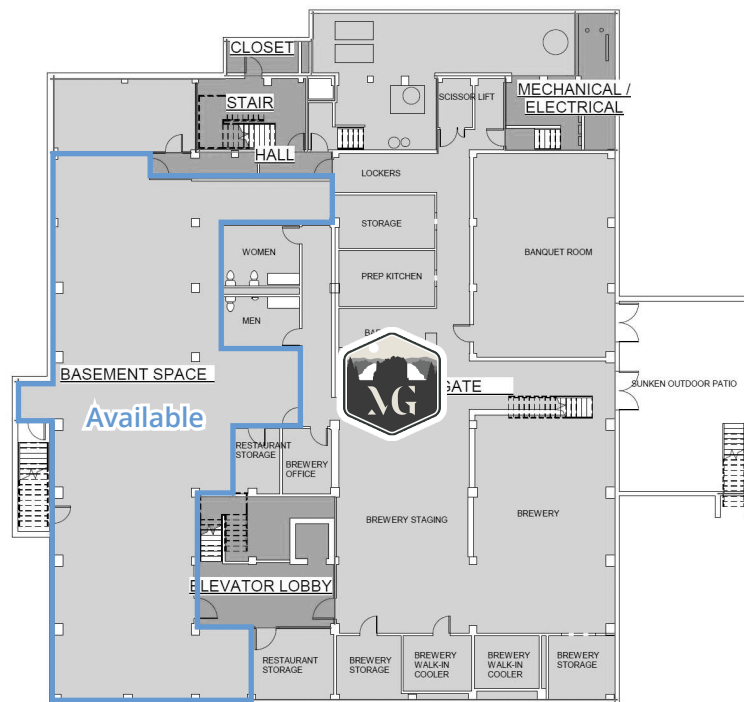
Property Information

Property Type	Office
Total Building Size	35,811 SF
Available SF	Suite 202 - 1,046 SF Basement - 3,626 SF
Parking	Off Street/Public
Lease Type	NNN
Lease Rate	Suite 202 - \$1.75 SF Basement - \$1.00 SF
Access	Contact Agent



Floor Plans

Basement



2nd Floor



Location



Google Map



Street View



Colliers

205 Shoshone Street N, Suite 201
Twin Falls, Idaho 83301
208 910 2006
colliers.com/idaho