



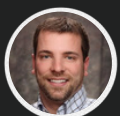
LEASE NEGOTIABLE

Building Features

- ✓ ± 4,699 SF Available
- ✓ Ideal Restaurant / Retail / Flex
- ✓ To be Built Simultaneously With New 100+ Unit Residential Community
- ✓ Interacts with Ogden River Parkway Trail
- ✓ Frontage on Busy Washington Blvd
- ✓ Ample Off-Street Parking
- ✓ Zoned Ogden City C-3
- ✓ Tenant Build-Out Negotiable
- ✓ MLS # 2005965



Contact Agents



Aaron McCrady
801-953-7012
aaroncrest@gmail.com



Greg Scothern
801-710-4318
greg@crestutah.com



www.CrestUtah.com

978 Chamber St., Suite 3, South Ogden, Utah 84403
Phone : 801-476-9500 | Fax: 801-476-9581

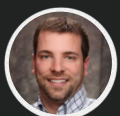


WHY OGDEN?

- **2nd Best-Performing City for Economic Growth:** Ranked by the Milken Institute in 2025 for labor market and wage growth.
- **6th Best Small City in America:** Ranked by WalletHub in 2019 based on economic health and quality of life.
- **Top Tech Growth Area:** Leading the state in tech sector expansion.
- **Strong GDP Growth:** Ogden-Clearfield GDP growth 25% from 2019 to 2022 vs. 19% national average.
- **Outdoor Rec Hub:** Easy access to Olympic skiing, mountain trails, and scenic waterways.

Prominently located at the intersection of Washington Blvd and the Ogden River Parkway, this commercial building will be the focal point of a new mixed use development featuring 100+ residential units. The site is located a few hundred feet from the iconic Ogden Arch, and the building will be designed and oriented to interact with the adjacent Ogden River Parkway trail. Roll-up garage doors, ample patio seating, a river-facing roof deck, bike amenities, and a walk-up window will make this new build Ogden's most trail-centric commercial space. Its substantial parking lot and location on busy Washington Blvd will ensure that it is also highly visible & accessible to cars. Across the street, the new Ogden Bend neighborhood is teeming with new residential development, and the downtown core lies only a few blocks south.

Contact Agents



Aaron McCrady

801-953-7012
aaroncrest@gmail.com



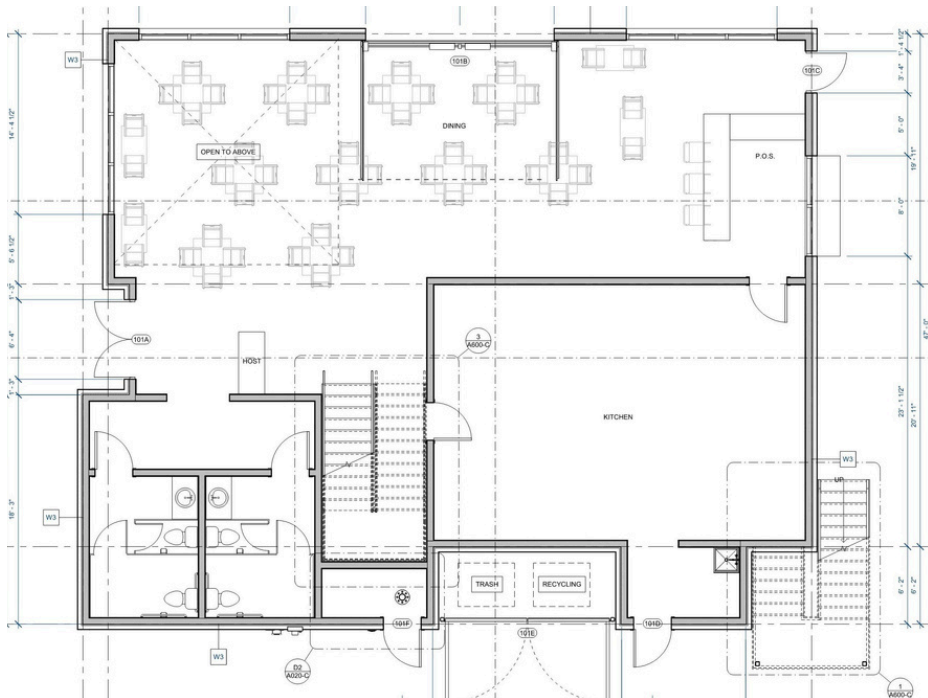
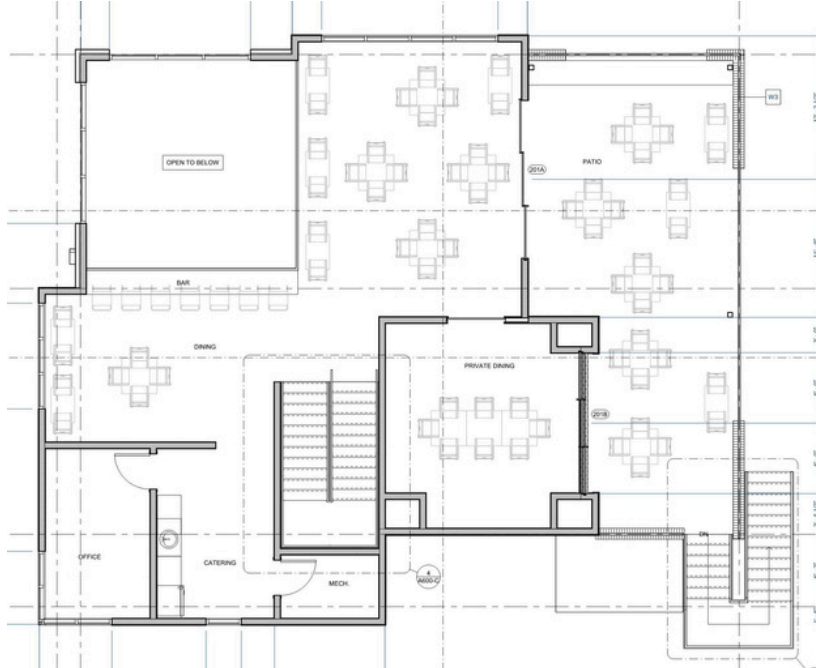
Greg Scothern

801-710-4318
greg@crestutah.com

Sample Space Plan

Tenant Build-Out Negotiable

± 4,699 SF



Contact Agents



Aaron McCrady
801-953-7012
aaroncrest@gmail.com



Greg Scothern
801-710-4318
greg@crestutah.com

Site Plan

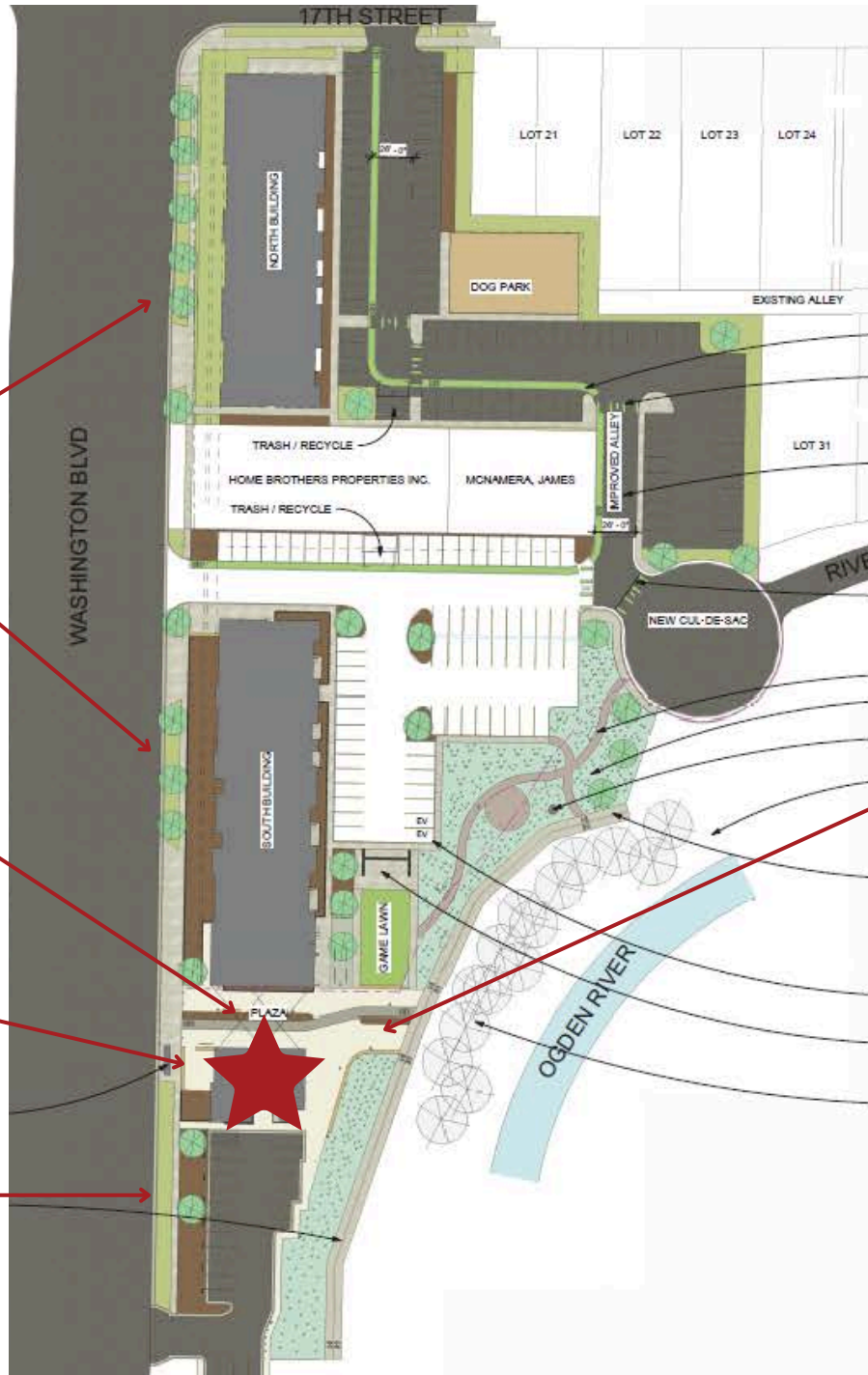


New Residential Buildings
100+ Units

Active Plaza Connecting
Commercial & Residential

SITE

Commercial
Parking Lot



Outdoor Seating Area
Facing Trail and River

Contact Agents



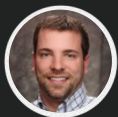
Aaron McCrady
801-953-7012
aaroncrest@gmail.com



Greg Scothern
801-710-4318
greg@crestutah.com



Contact Agents



Aaron McCrady
801-953-7012
aaroncrest@gmail.com



Greg Scothern
801-710-4318
greg@crestutah.com



FOR LEASE

**1810 Washington Blvd
Ogden, UT**

**For More Information
Please Contact:**



Aaron McCrady

801-953-7012

aaroncrest@gmail.com



Greg Scothern

801-710-4318

greg@crestutah.com

