

**COMMERCIAL  
LEASE**

**JUST LISTED**



**DAVID FEAZELL**

443.299.7937 (c)

410.803.0714 (o)

[dfeazell@garceaurealty.com](mailto:dfeazell@garceaurealty.com)



**15 N. PARKE STREET | ABERDEEN, MD 21001**

**Fully Built Out 1,325SF Office Space for Lease in  
Prime Downtown Location.**





# LEASE DETAILS

- 1,325sf fully built out Office space
- Lease rate—\$1,710/month NNN
- Cars per day passing the site
- TOD Zoning
- Ample Rear & Street Parking
- Prime Downtown Location
- 54,000 people living within 5 miles





# PROPERTY HIGHLIGHTS

## BUILDING DETAILS:

Bel Parke Plaza is an attractive, downtown multi-tenant retail and office center

Made with Brick & Stucco Construction

Sits adjacent to Parke Place, South Parke, & Grace United Methodist Church

Signage available on rear & side of building

10ft drop ceilings

Free rear & street parking

Reception area + 1 private office + open work area + 1 private bathroom

No Sprinklers





# PRIME LOCATION



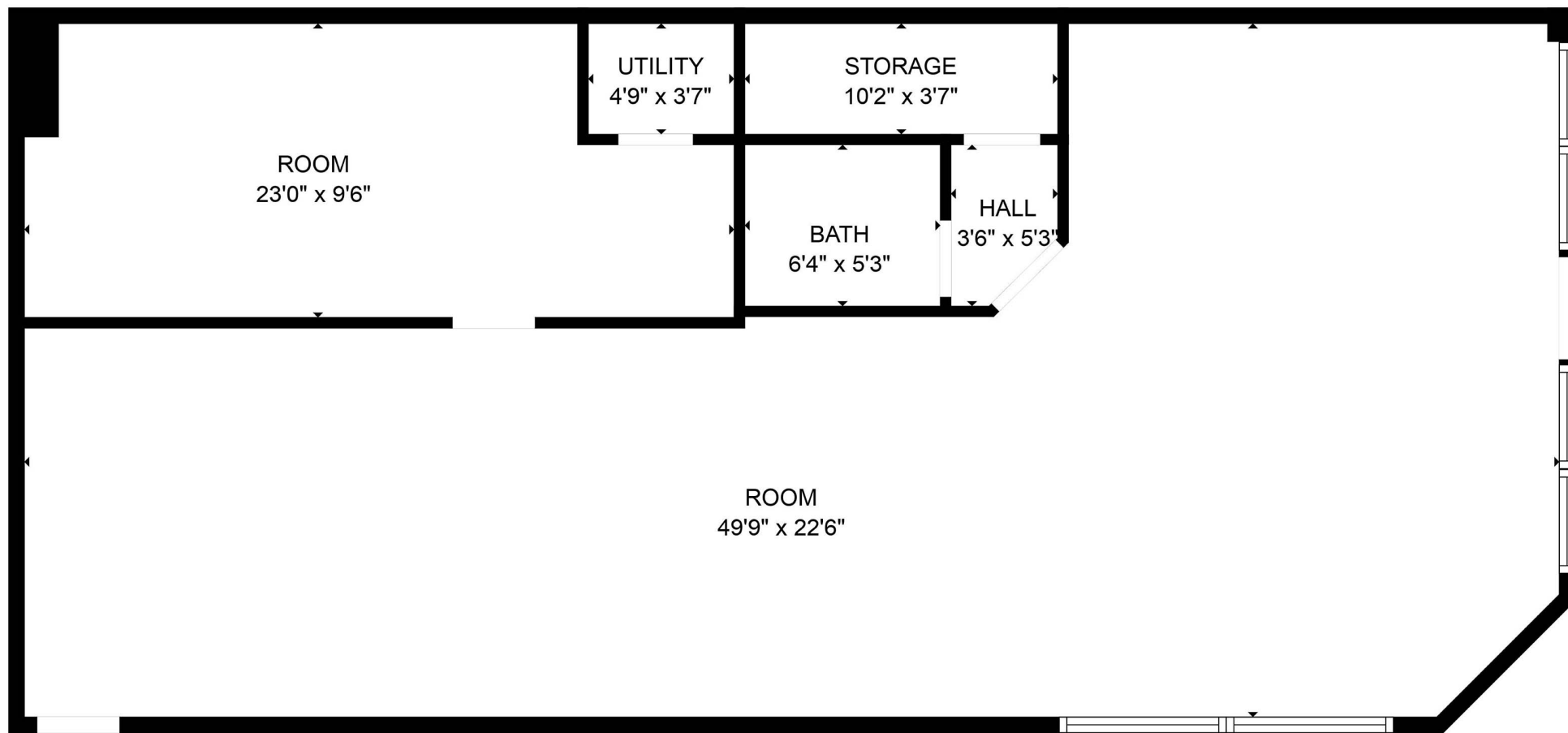
13,000 Cars Per Day

1,000 Cars Per Day





# FLOOR PLAN



FLOOR PLAN CREATED BY CUBICASA APP. MEASUREMENTS DEEMED HIGHLY RELIABLE BUT NOT GUARANTEED





**15 N. PARKE STREET, ABERDEEN, MD 21001**

**EXCLUSIVELY MARKETING BY**

David Feazell of Garceau Realty, Commercial Realtor  
443.299.7937 (c) | 410.803.0714 (o) | [dfeazell@garceaurealty.com](mailto:dfeazell@garceaurealty.com)

