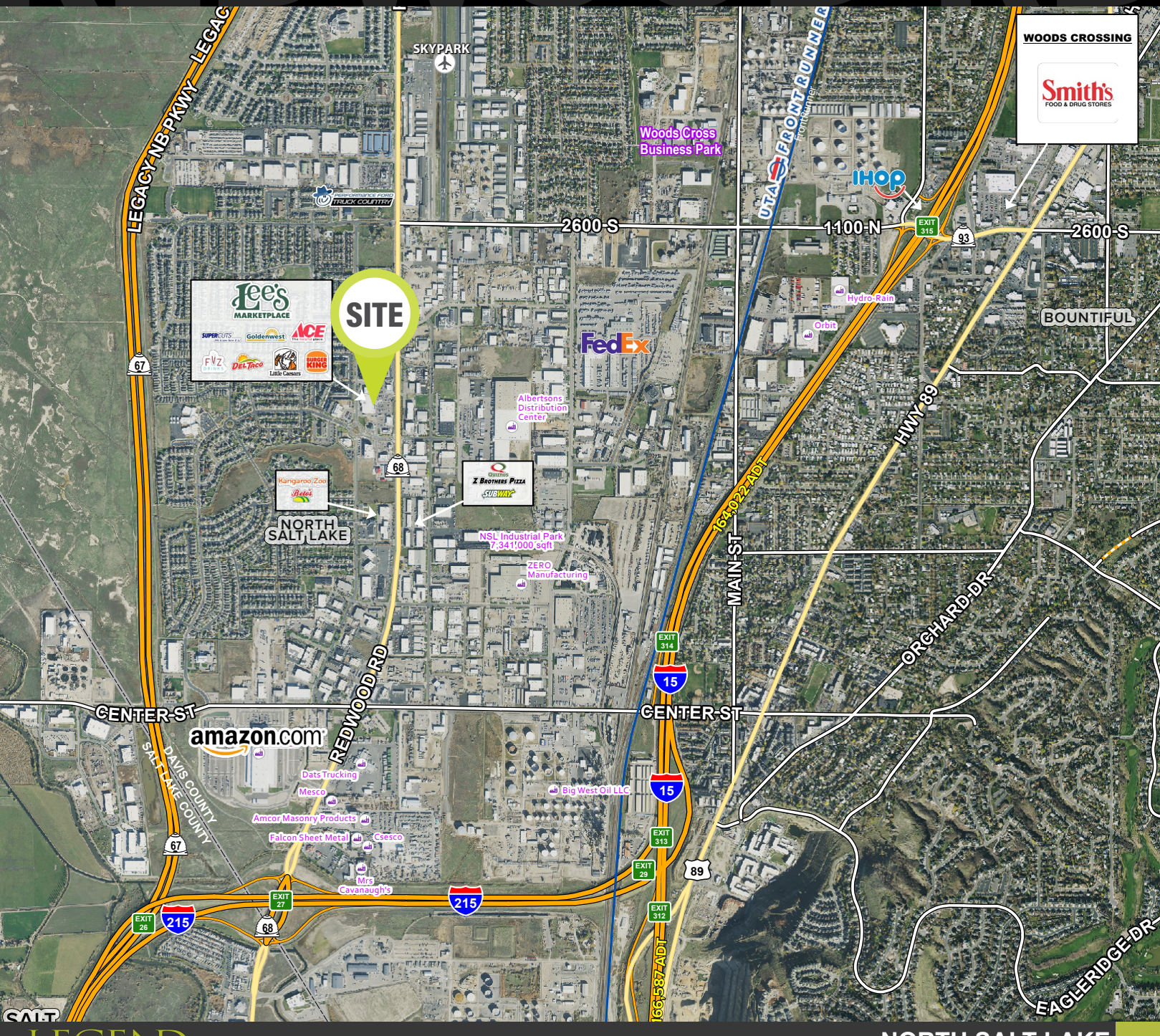


# FOXBORO MARKETPLACE

689 North Redwood Road • North Salt Lake City, UT 84054



## DEMOGRAPHICS

|                              | 1 MILE    | 3 MILE    | 5 MILE    |
|------------------------------|-----------|-----------|-----------|
| 2023 EST. POPULATION         | 8,852     | 48,968    | 114,520   |
| 2028 PROJECTED POPULATION    | 9,708     | 52,251    | 121,570   |
| 2023 EST. DAYTIME POPULATION | 7,909     | 21,426    | 38,512    |
| 2023 EST. AVG HH INCOME      | \$144,216 | \$131,733 | \$130,931 |
| 2023 EST. HOUSEHOLDS         | 2,986     | 16,222    | 37,925    |
| 2023 EST. BUSINESSES         | 541       | 2,048     | 4,198     |

## TRAFFIC

**REDWOOD ROAD**  
9,500 VEHICLES PER DAY

**LEGACY PARKWAY**  
20,000 VEHICLES PER DAY



### TANNER OLSON

801.930.6752  
tolson@legendllp.com

### CHLOE CYPERS

801.644.6299  
ccypers@legendcommercial.com

### TESS ARGYLE

801.556.0540  
targyle@legendcommercial.com



801.930.6750 | www.legendllp.com  
2180 S 1300 E, Suite 240 | Salt Lake City, UT 84106

## HIGHLIGHTS

- **GROCERY ANCHORED SHOP SPACE FOR LEASE**
- **800-1,072 SF AVAILABLE**
- **HIGH INCOME AREA**
- **HIGH GROWTH AREA, 570 APARTMENTS WITHIN HALF MILE**
- **CONTACT AGENT FOR PRICING**



