



308 N. Cleveland Massillon Rd.
Akron, OH 44333

Property Details

- Located within Commonwealth Square, a 7-building professional office park
- Newly Finished Interiors
- Six Private Offices Available
- Shared Kitchenette and Conference Room
- Common Corridor Restrooms
- Quiet, Suburban Setting in Rear of Complex
- Nicely Appointed, Contemporary Spaces
- Some Office Furniture Available for Use
- Convenient Access to Montrose Area Amenities and I-77
- Although partially above grade, all lower level suites have windows and natural light
- Suites are ideal for small firms or solo practitioners who want efficiencies of shared conference and break rooms

Units Available

L-1	110 SF	L-5	72 SF
L-3	151 SF	L-7	99 SF
L-4	76 SF	L-8	99 SF

**Fractional office or conference room use is also possible.*

Gross lease includes rent, utilities (solar power) internet access, in-suite cleaning, reserved use of shared conference room, 24/7 access. Some suites are furnished. Solar powered building with integrated solar roof tiles.

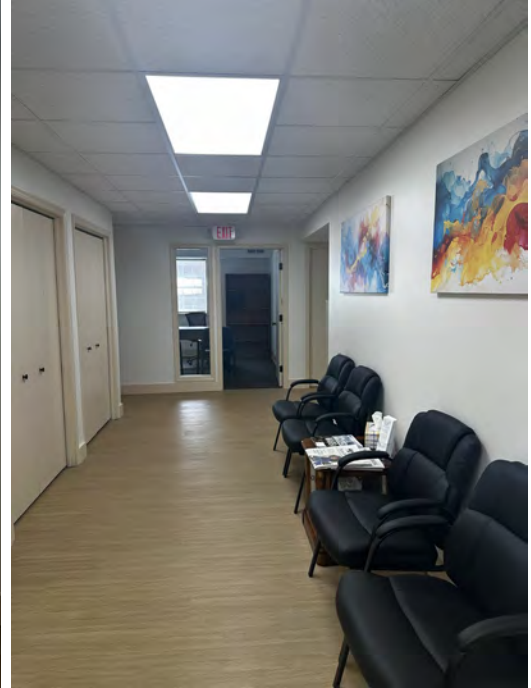
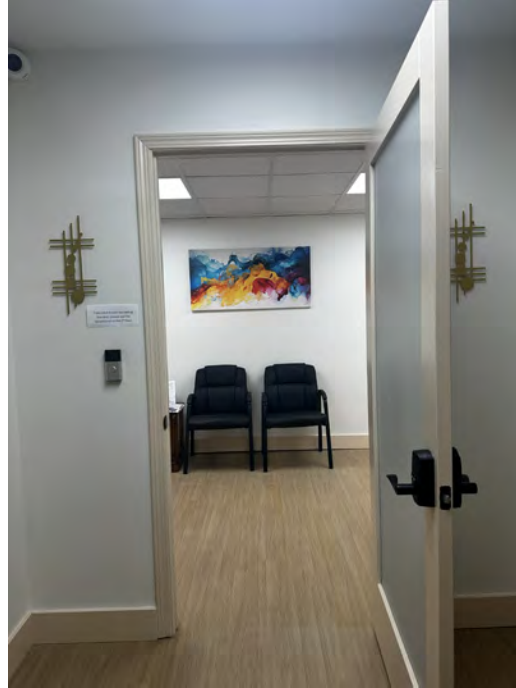
Margaret Slesnick

Senior Associate
330 575 7584
margaret.slesnick@naipvc.com

NAIPleasant Valley

308 N. Cleveland Massillon Rd.
Akron, OH 44333

FOR LEASE



Margaret Slesnick
Senior Associate
330 575 7584
margaret.slesnick@naipvc.com

540 White Pond Drive | Suite A
Akron, Ohio 44320
330 535 2661
naipvc.com

NAIPleasant Valley

308 N. Cleveland Massillon Rd.
Akron, OH 44333

FOR LEASE



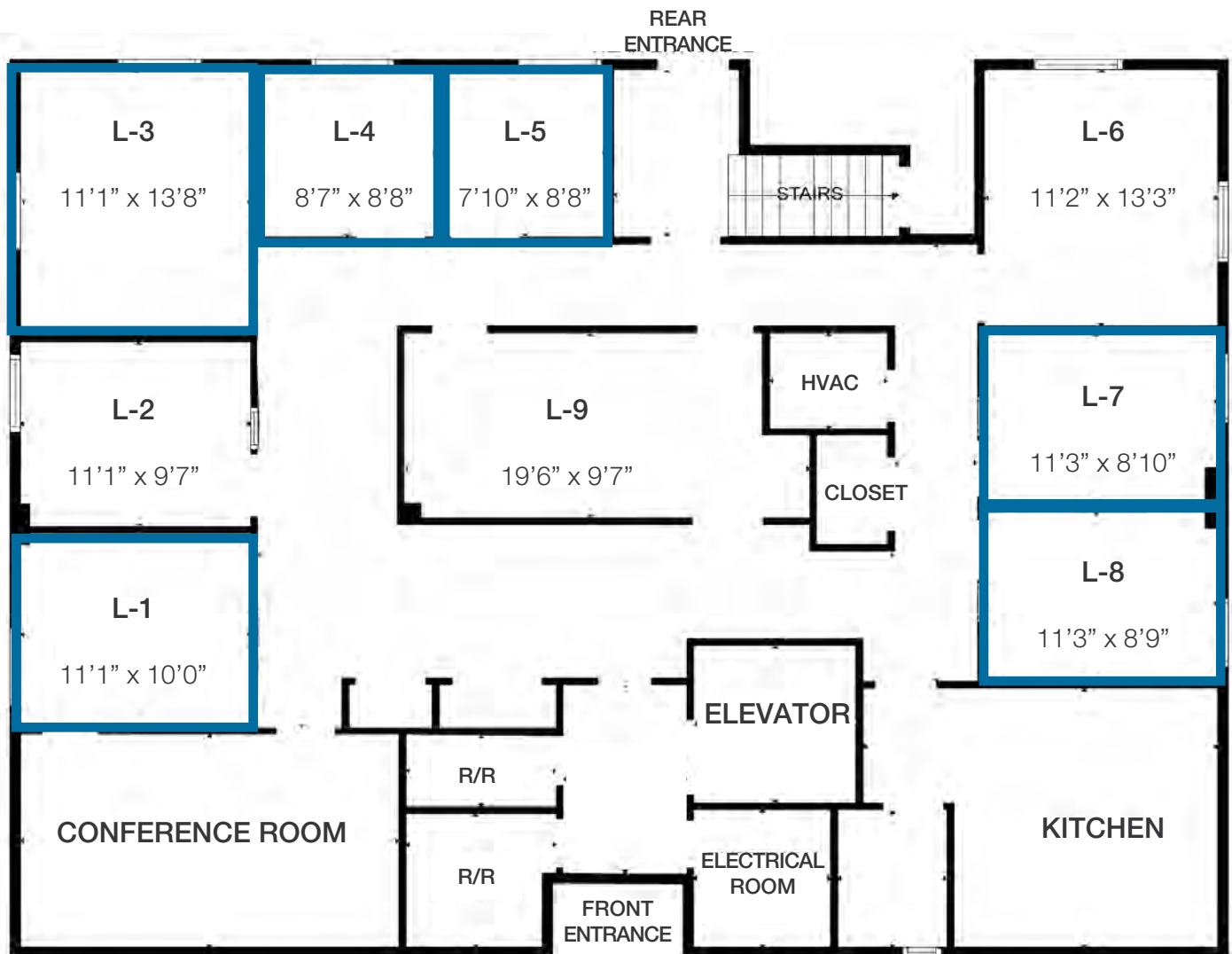
Fractional office or conference room use is also possible.

Margaret Slesnick
Senior Associate
330 575 7584
margaret.slesnick@naipvc.com

540 White Pond Drive | Suite A
Akron, Ohio 44320
330 535 2661
naipvc.com

Units Available

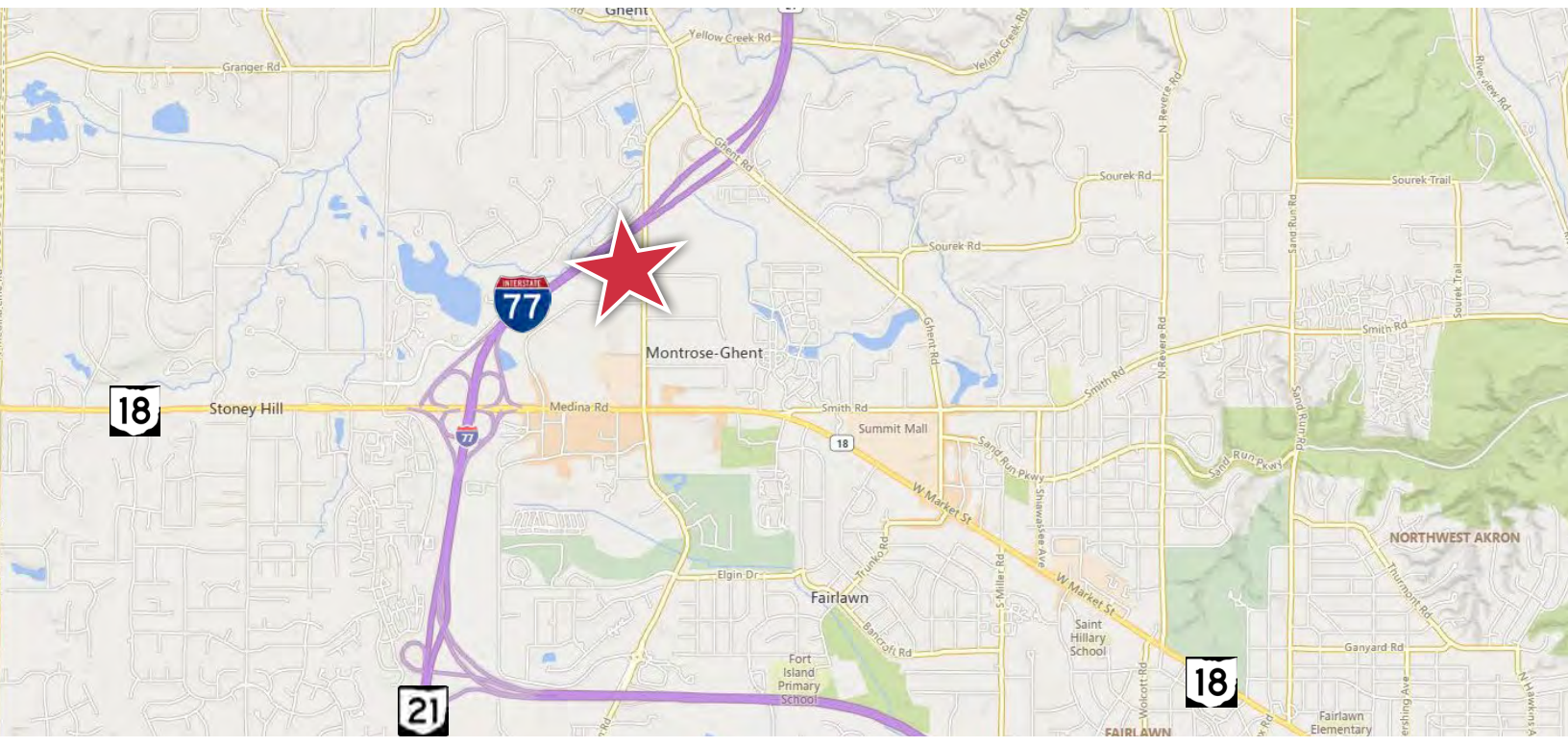
L-1	110 SF	L-5	72 SF
L-3	151 SF	L-7	99 SF
L-4	76 SF	L-8	99 SF



NAIPleasant Valley

308 N. Cleveland Massillon Rd.
Akron, OH 44333

FOR LEASE



Margaret Slesnick
Senior Associate
330 575 7584
margaret.slesnick@naipvc.com

540 White Pond Drive | Suite A
Akron, Ohio 44320
330 535 2661
naipvc.com

NAIPleasant Valley

308 N. Cleveland Massillon Rd.
Akron, OH 44333

FOR LEASE



Located within Commonwealth Square, a 7-building professional office park

Demographics	1 Mile	3 Miles	5 Miles
Population:	2,565	28,947	63,161
Households:	1,173	11,870	27,612
Median Age:	57.4	45.7	44.3
Average HH Income:	\$273,243	\$220,338	\$174,195
Traffic Count:	# VPD S. Canton Rd. @ Berne St.		

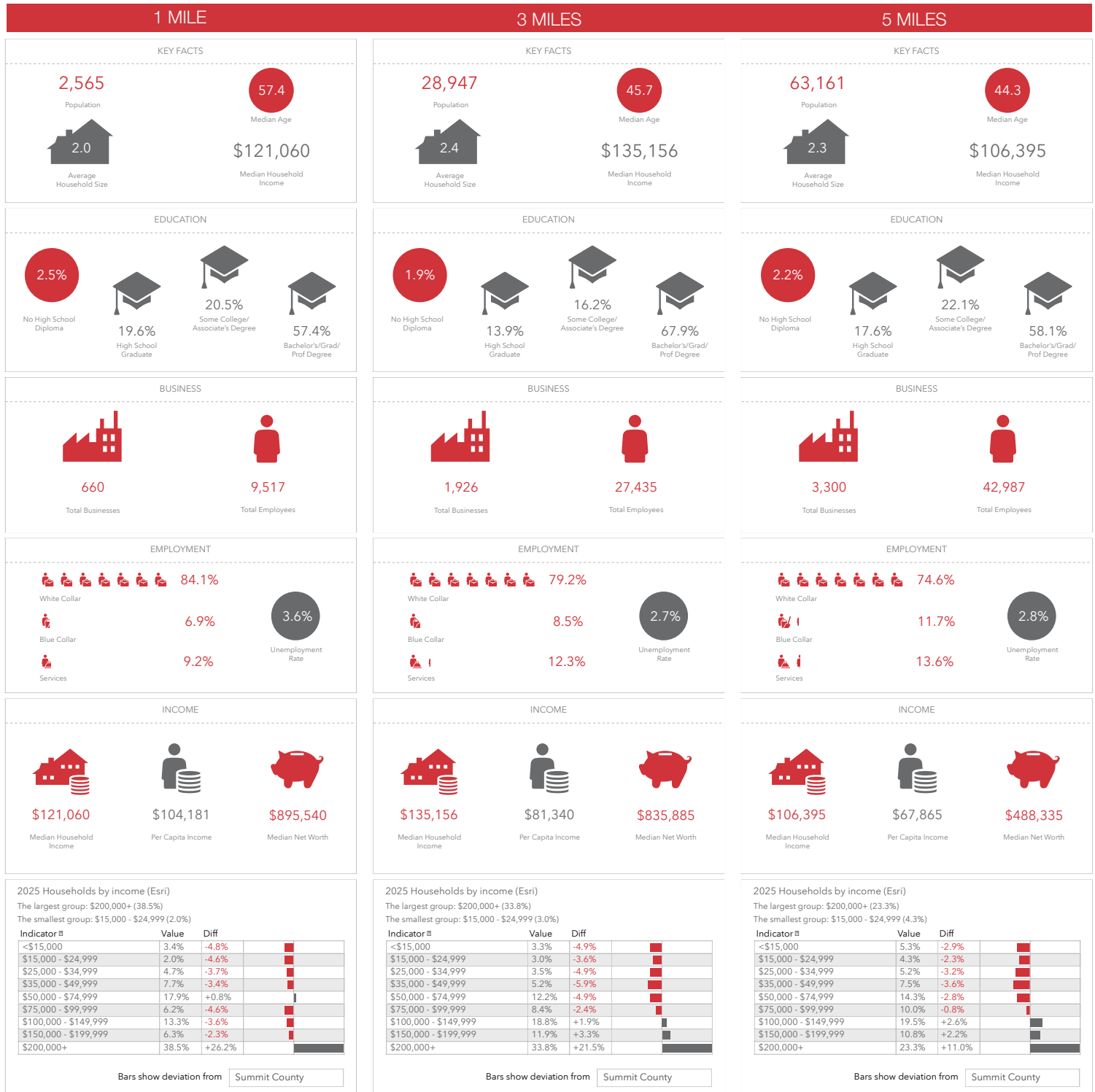
Margaret Slesnick
Senior Associate
330 575 7584
margaret.slesnick@naipvc.com

540 White Pond Drive | Suite A
Akron, Ohio 44320
330 535 2661
naipvc.com

NAIPleasant Valley

308 N. Cleveland Massillon Rd.
Akron, OH 44333

FOR LEASE



Margaret Slesnick
Senior Associate
330 575 7584
margaret.slesnick@naipvc.com

540 White Pond Drive | Suite A
Akron, Ohio 44320
330 535 2661
naipvc.com

Units Available

L-1	L-3	L-4	L-5	L-7	L-8
110 SF	151 SF	76 SF	72 SF	99 SF	99 SF

Property Details**BUILDING SIZE:** 8,856 SF**MIN / MAX AVAILABLE:** 68 / 151 SF**FLOORS:** 2**YEAR BUILT:** 1993**PARKING:** 25 spaces**Pricing Details****LEASE RATE:** negotiable**Location Details****INTERCHANGE / DISTANCE:** SR-18 / 0.7 miles; I-77 / 1.5 miles

Located in a small office complex known as Commonwealth Square in the Fairlawn/Montrose-Bath Township area on the northwest side of greater Akron. Convenient access to I-77 and close to the busy Montrose retail corridor along W. Market Street/SR-18.

Notes

Executive Offices Available - fresh interior buildout; shared kitchenette, conference room and restrooms; Single or multiple offices available, some include furniture. Gross lease includes rent, utilities (solar power) internet access, in-suite cleaning, reserved use of shared conference room, 24/7 access. Some suites are furnished. Solar powered building with integrated solar roof tiles. Fractional office or conference room use is also possible.