



CENTURY FARM

CENTURY FARM PADS

AMITY ROAD & EAGLE ROAD, MERIDIAN, ID
PARCELS AND LOTS FOR SALE



Holt Haga
208.371.4658
Holt@bvadev.com

Kekoa Nawahine
208.810.0137
Kekoa@bvadev.com



BALL
VENTURES
AHLQUIST

SITE PLAN



BALL
VENTURES
AHLQUIST

- ST. LUKES ON SITE
- POPULATION OF 89,000 WITHIN 5-MILE RADIUS
- HIGH GROWTH AREA WITH MULTIPLE RESIDENTIAL PROJECTS WITHIN 3 MILE RADIUS
- AMPLE PARKING
- ELEMENTARY SCHOOL, PARK, RETAIL AND YMCA ON SITE
- EXCELLENT EXPOSURE, VISIBILITY, AND ACCESS



LOTS AND PARCELS FOR SALE



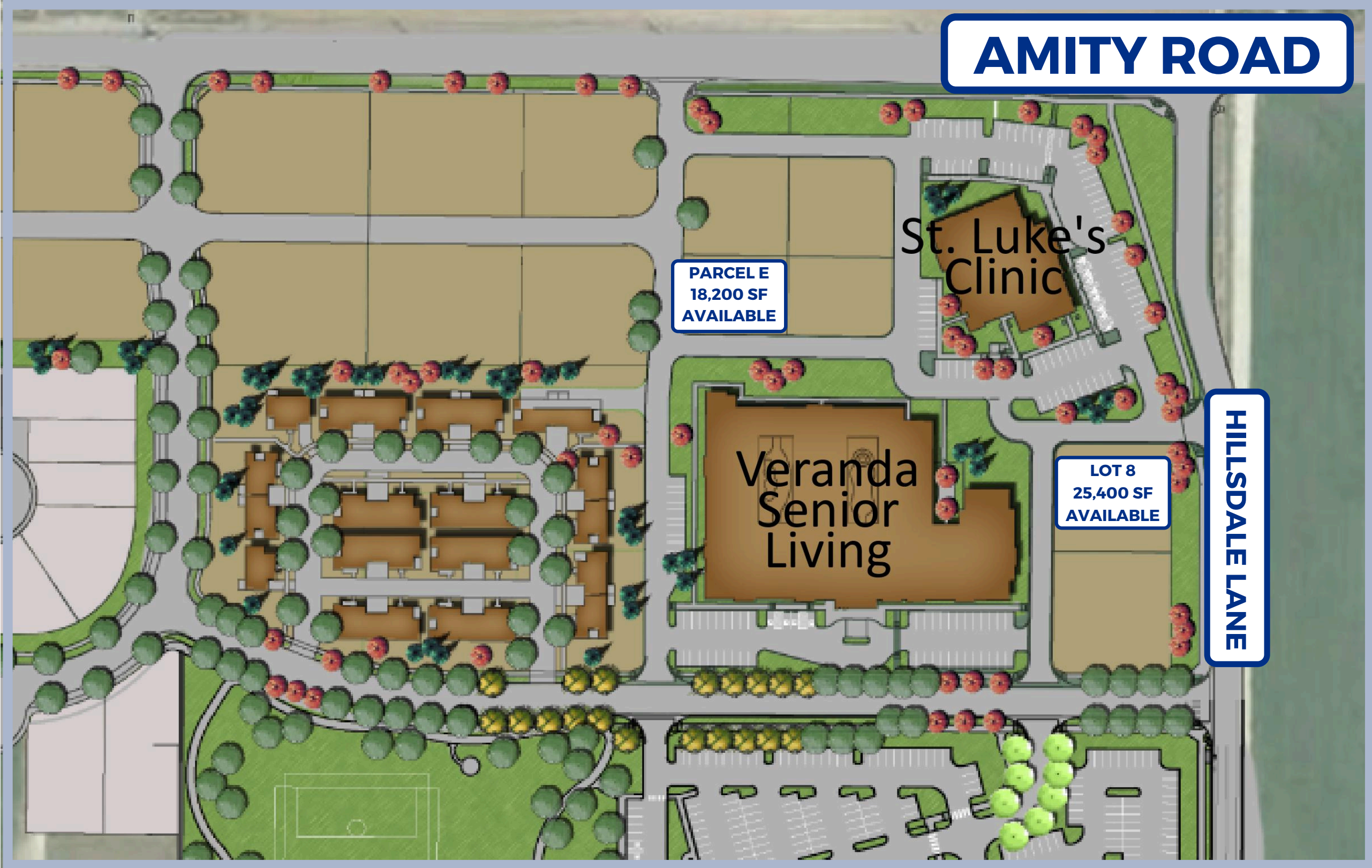
BALL
VENTURES
AHLQUIST



LOTS AND PARCELS FOR SALE



BALL
VENTURES
AHLQUIST



SITE LOCATION

- **AVERAGE INCOME**

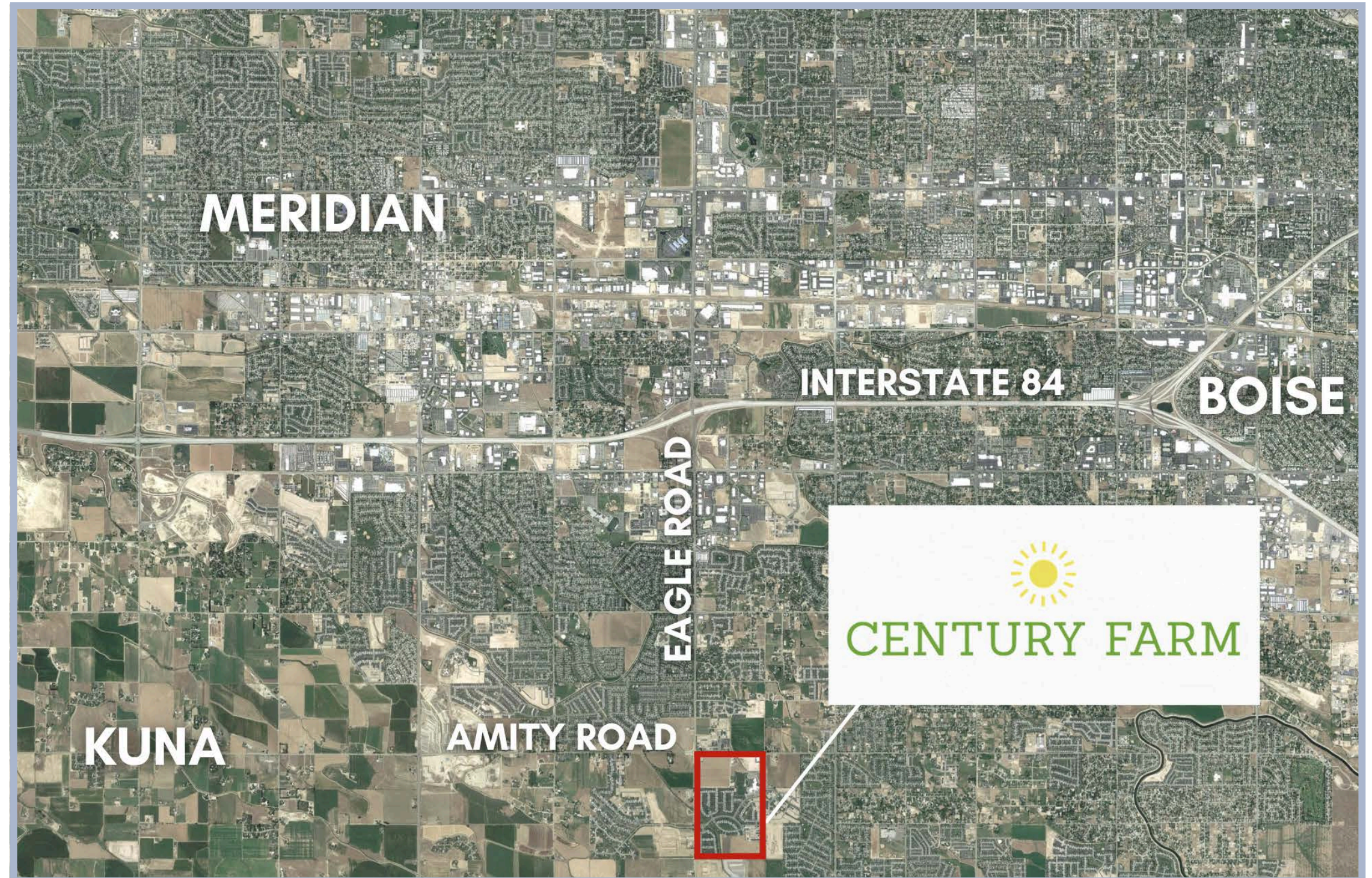
- **\$95,180 | 5 MI**
- **\$85,317 | 3 MILES**
- **\$75,266 | 1 MILE**

- **POPULATION**

- **89,000 | 5 MILES**
- **20,000 | 3 MILES**
- **2,500 | 1 MILE**

- **DRIVE TIMES**

- **AIRPORT (BOI) | 13 MINS**
- **DOWNTOWN BOISE | 15 MINS**
- **DOWNTOWN MERIDIAN | 10 MINS**



RETAIL MAP

- CENTURY FARM IS A MIXED-USE DEVELOPMENT LOCATED CONTIGUOUS TO THE SOUTH MERIDIAN YMCA AND HILLSIDE ELEMENTARY. THE DEVELOPMENT INCLUDES A ST. LUKES PRIMARY CARE FACILITY AND VERANDA SENIOR LIVING.
- EXTENSIVE RESIDENTIAL GROWTH IN THE IMMEDIATE SURROUNDING AREA MAKES CENTURY FARMS A STRONG RETAIL AND OFFICE OPPORTUNITY.





CENTURY FARM

CENTURY FARM PADS

AMITY ROAD & EAGLE ROAD, MERIDIAN, ID
PARCELS AND LOTS FOR SALE



Holt Haga
208.371.4658
Holt@bvadev.com

Kekoa Nawahine
208.810.0137
Kekoa@bvadev.com



BALL
VENTURES
AHLQUIST