

**CHRISTIAN VERDUGO**  
PROPERTY MANAGER  
520-249-1397  
cverdugo@staffexpertsinc.com

**FOR LEASE**  
**1625 W. Ina Road #109**  
Tucson, Arizona 85704

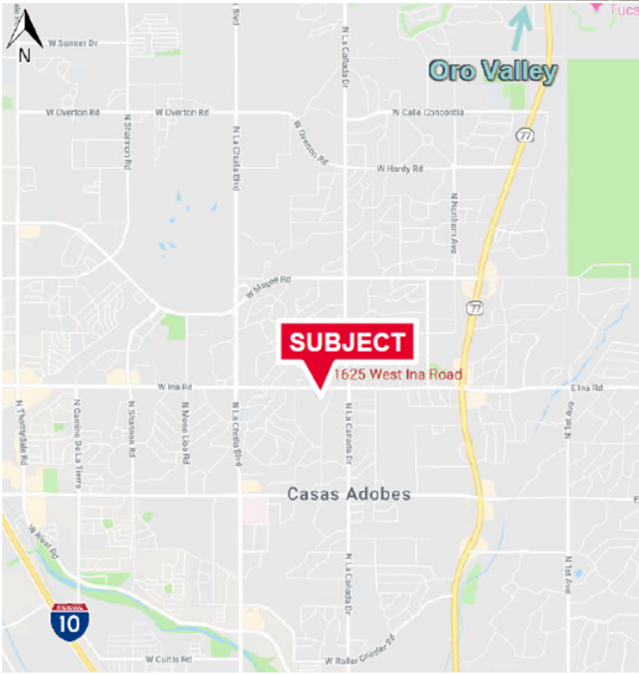
**OFFICE**



**1,650 SF CLASS C OFFICE MEDICAL BUILDING**  
**Lease Price: \$17.50 Per Square Feet ( \$2,406 Monthly Lease)**  
**Note: Price is Negotiable Depending on Lease Terms**

**Property Highlights**

**Excellent office space located at Ina Road Professional Center. The office offers an open floor plan with a harmonius blend of convenience, style, and functionality. Highly visible and easily accessible from Ina Road. Office can be used for medical or genral office use. As a matter of fact this office used to be a previous dental office. The entire office is also plumbed for medical use.**



- The floorplan includes 6 individual offices, 2 bathrooms, conference room/reception desk, lobby, kitchen/break room. 5 of the individual offices are plumbed for easy access to connect a sink in case the potential tenant would like to use this office for medical use.
- The office building has new laminate wood flooring in heavy traffic areas and new carpet in 4 of the individual offices. One of the offices has wood laminate flooring.
- New paint, new LED lighting installed throughout the entire office, renovated bathrooms, renovated kitchen with new appliances, new granite counter tops in kitchen & reception desk, and new modern doors installed recently in the entire office.
- Office Building is located near shopping centers, NW Hospital, foothills mall, restaurants, and other entertainment facilities.
- Office space is in excellent move-in condition.
- Bus Line in front of Ina Road Professional Center.
- High Speed internet & Ethernet lines just installed in all private offices



