

Antioch Crossing - Lot 2

Retail Space Available

SF Available: 1,334
Base Rent: \$23.00psf
NNNs: \$11.00psf

- **Anchored by** Walmart Neighborhood Market, Burlington, PetSmart, Starbucks
- **Traffic Count** - 40,000 cars per day
- **Ample Parking**



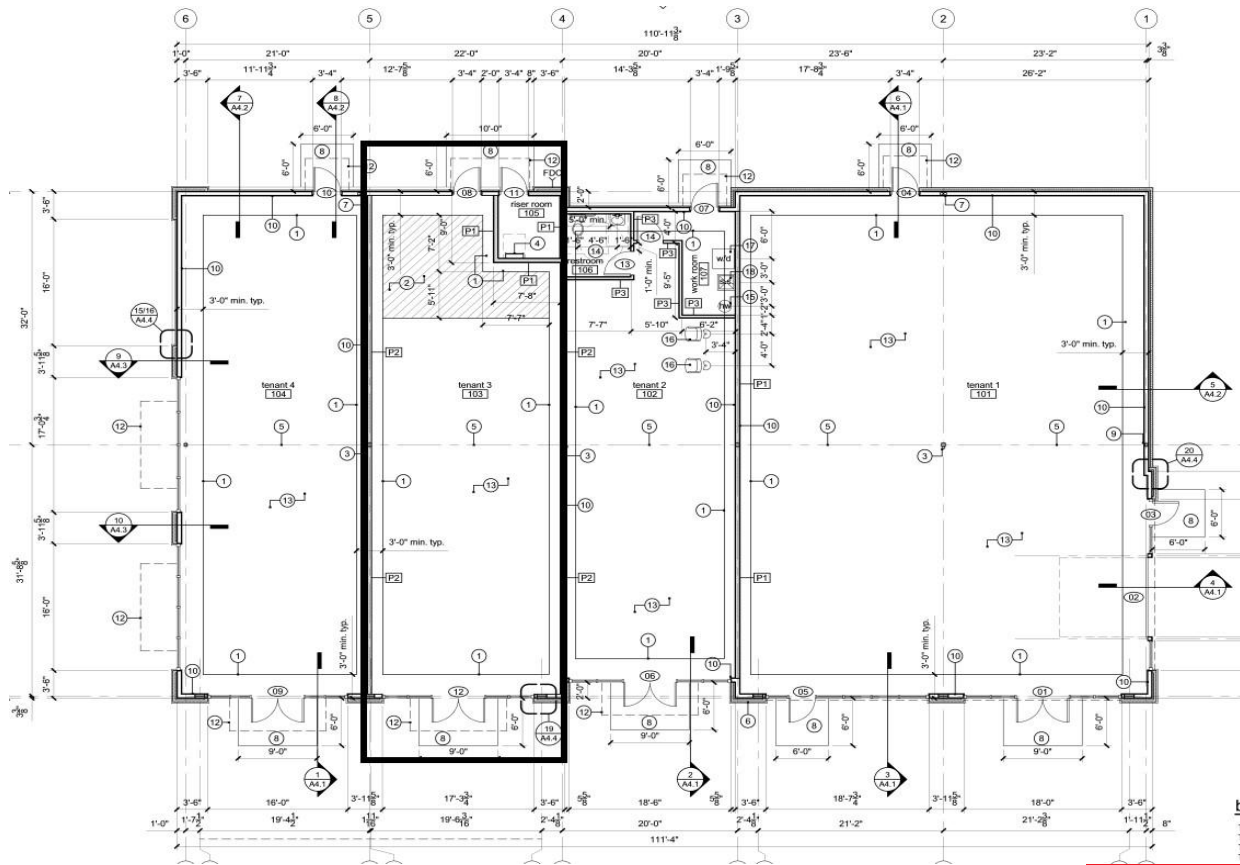
5243 N Antioch Road Kansas City, MO 64119

For Additional Information, please contact:

Dan Horn

(816) 979-1829
danhorn@blueridgetower.net

**PROPERTY
CAPITAL
ADVISORS**



5243 N Antioch Road, Kansas City, MO 64119

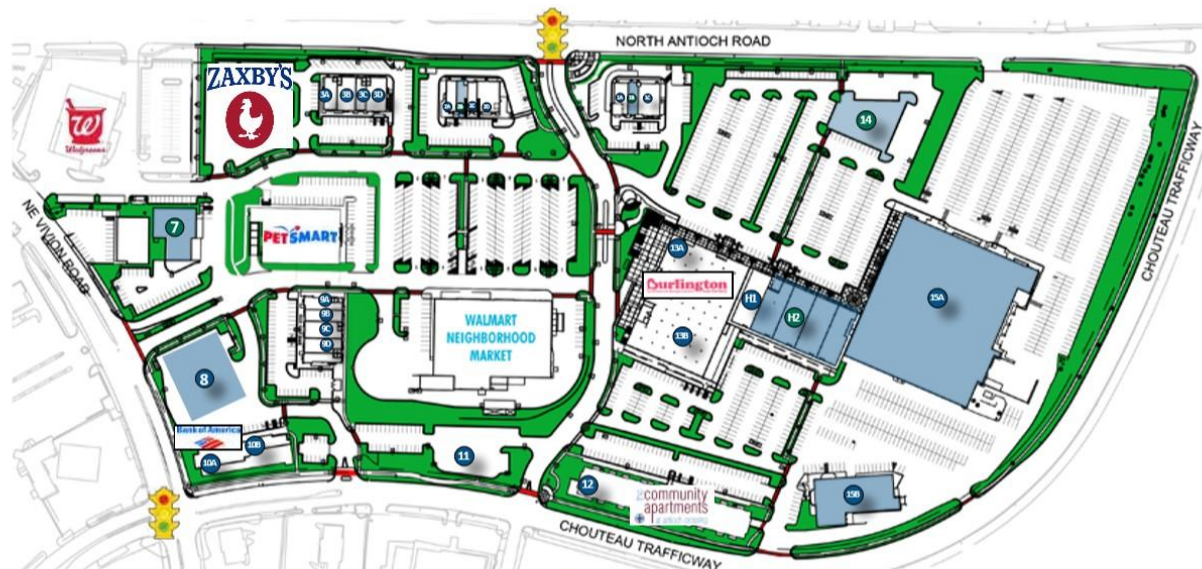
For Additional Information, please contact:

Dan Horn

(816) 979-1829

danhorn@blueridgetower.net

**PROPERTY
CAPITAL
ADVISORS**



Space	Tenant	Square Feet
1A	Starbucks	2,000 SF
1B	Country Cookie	1,373 SF
1C	MOD Pizza	3,000 SF
2A	Baskin Robbins	1,398 SF
2B	AVAILABLE	1,334 SF
2C	Lady Jane's	1,195 SF
2D	Qdoba	3,000 SF
3A	Five Guys Burgers and Fries	2,527 SF
3B	Verizon - Cell Only	1,968 SF
3C	UPS	1,900 SF

Space	Tenant	Square Feet
3D	Pepper Jax	2,500 SF
4	Zaxby's	Lot 1.3 AC/56,746 SF
5	Walmart Neighborhood Market	41,180 SF
6	PetSmart	19,400 SF
7	Goodyear	8,100 SF
8	AVAILABLE	3,200 SF
9A	GNC	1,500 SF
9B	Gerry Optical	2,000 SF
9C	Modern Nails	2,890 SF
9D	Metro PCS	1,850 SF

Space	Tenant	Square Feet
9E	Firehouse Subs	1,850 SF
10A	Bank of America	12,303 SF
10B	AVAILABLE	5,041 SF
12	Community Apartments	96 UNITS
13A	Burlington Coat Factory	55,221 SF
13B	AVAILABLE	13,862 SF
14	PAD AVAILABLE	
H1	Vintage Stock	5,076 SF
H2	AVAILABLE	4,000 - 22,000 SF
15A	AVAILABLE	142,616 SF (divisible)
15B	AVAILABLE	5,200 SF - 7,300 SF

5243 N Antioch Road, Kansas City, MO 64119

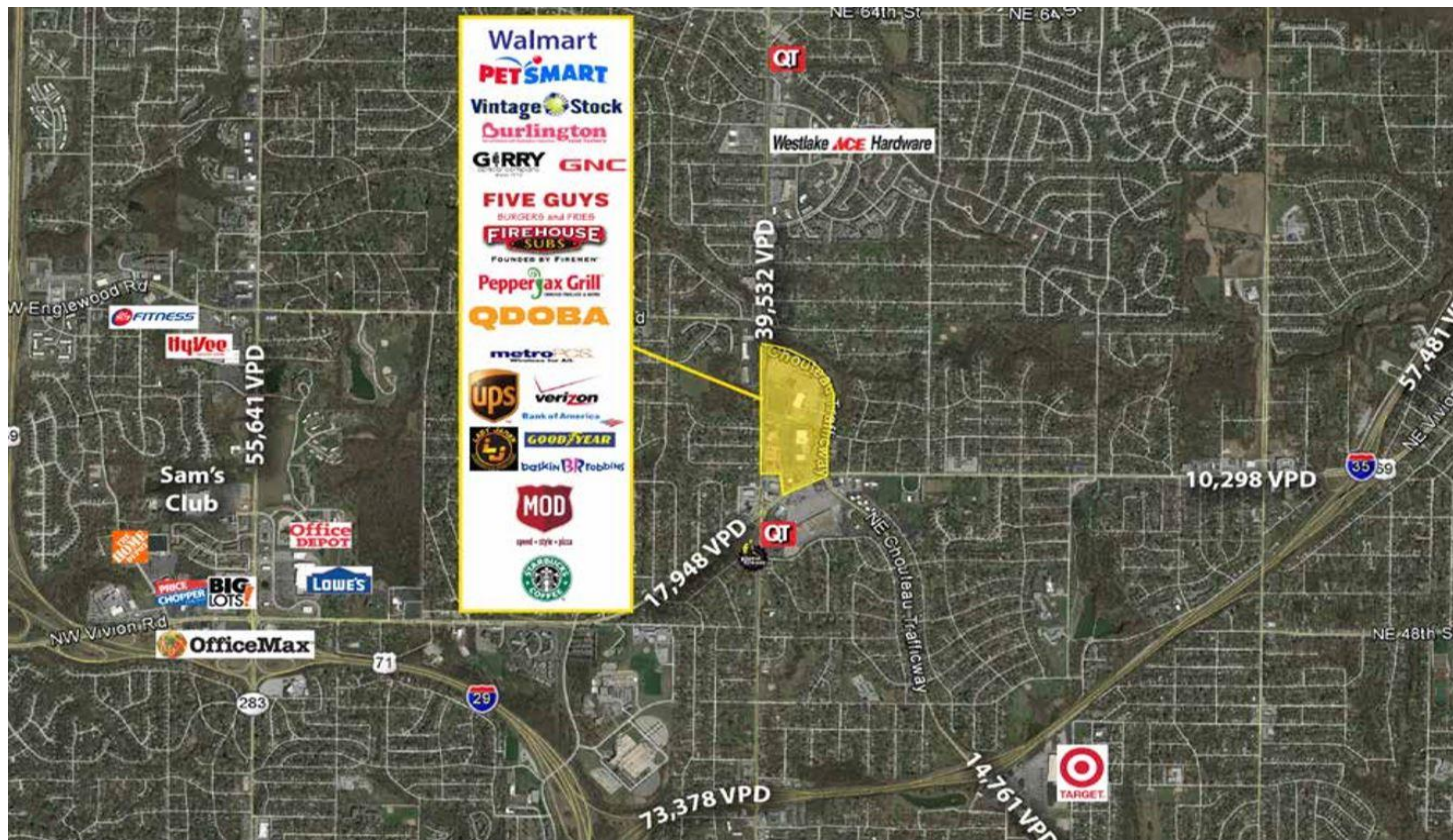
For Additional Information, please contact:

Dan Horn

(816) 979-1829

danhorn@blueridgetower.net

**PROPERTY
CAPITAL
ADVISORS**



5243 N Antioch Road, Kansas City, MO 64119

Dan Horn

(816) 979-1829

danhorn@blueridgetower.net

PROPERTY
CAPITAL
ADVISORS