

Former CVS

For Lease, Ground Lease, or Build-To-Suit Lease

2375 28th St | Wyoming, MI 49519

± 11,000 SF

± 1.3 Acres



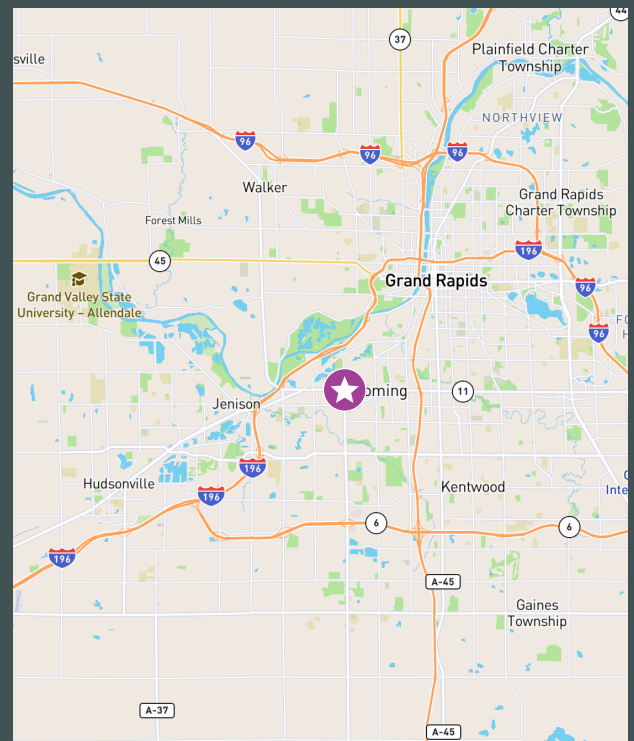


Prime Commercial Lot

Former CVS building available on the hard signalized corner of 28th St SW and Byron Center Ave. The property consists of 1.3 acres with three points of ingress/egress and 260' of frontage on 28th St SW. With its prime corner location, large lot and exceptional visibility, the property at 2375 28th St lends itself well to a variety of new uses. The building is modern, well-maintained and offers a robust space solution. It also offers a high degree of flexibility, as the space could be demised into smaller units. This property is also being offered for Ground Lease, with the possibility of splitting the lot into 2 separate parcels with shared access and parking, or Owner will look at doing a Build-to-Suit for the right Tenant. With combined traffic counts on 28th St and Byron Center Ave at 50k VPD, this is an ideal spot for a national tenant to establish a strong presence in this underserved retail corridor.

NNN Pricing to be Determined

Parcel #	41-17-10-359-017
Building Size	11,000 SF
Land Area	1.3 Acres
Traffic Counts	50,000 (28K on 28th St and 22K on Byron Center Rd.)
Zoning	B2 - General Business
Parking	52 Surface Spaces
Year Built	2003



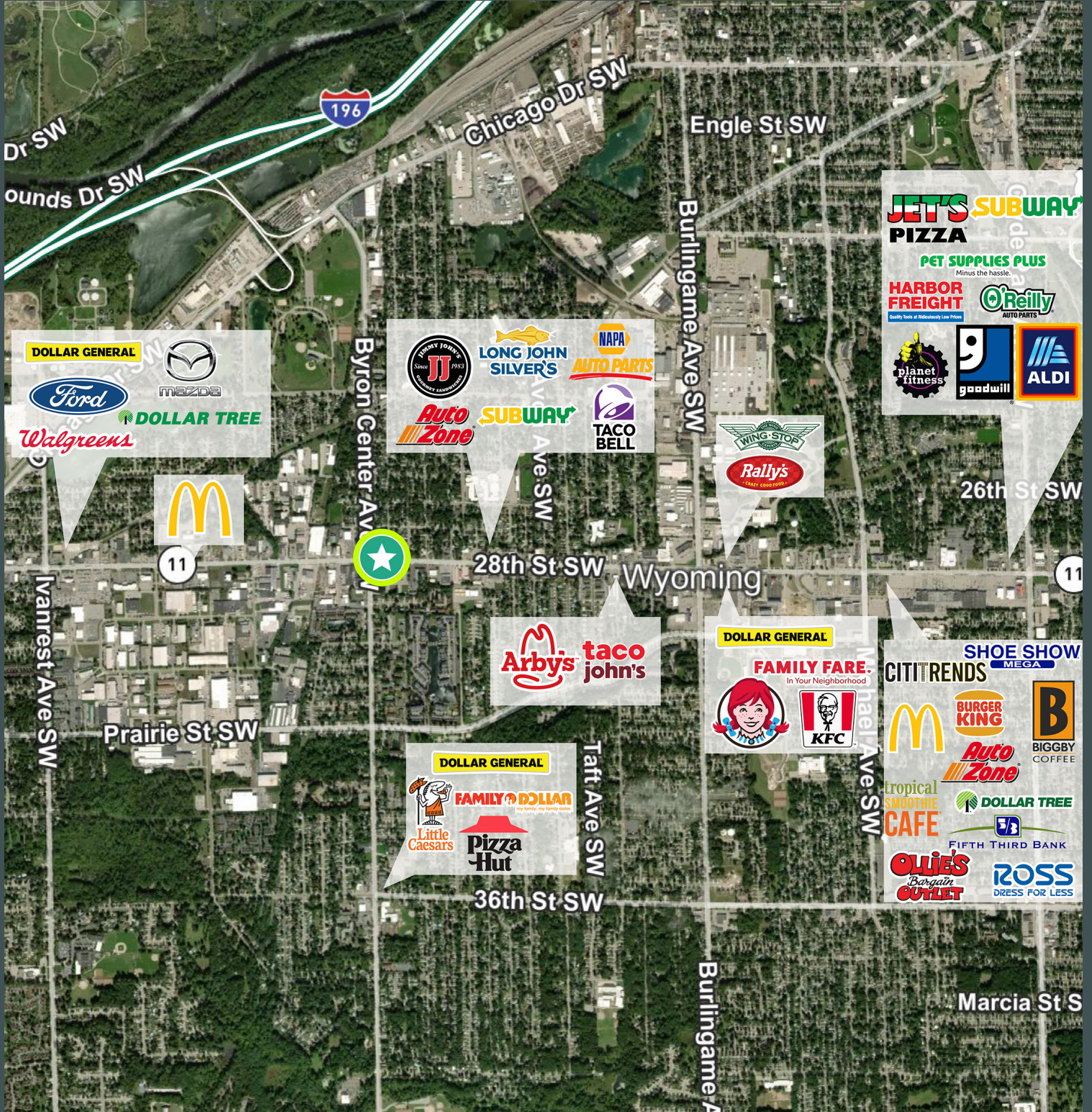
Contact Us

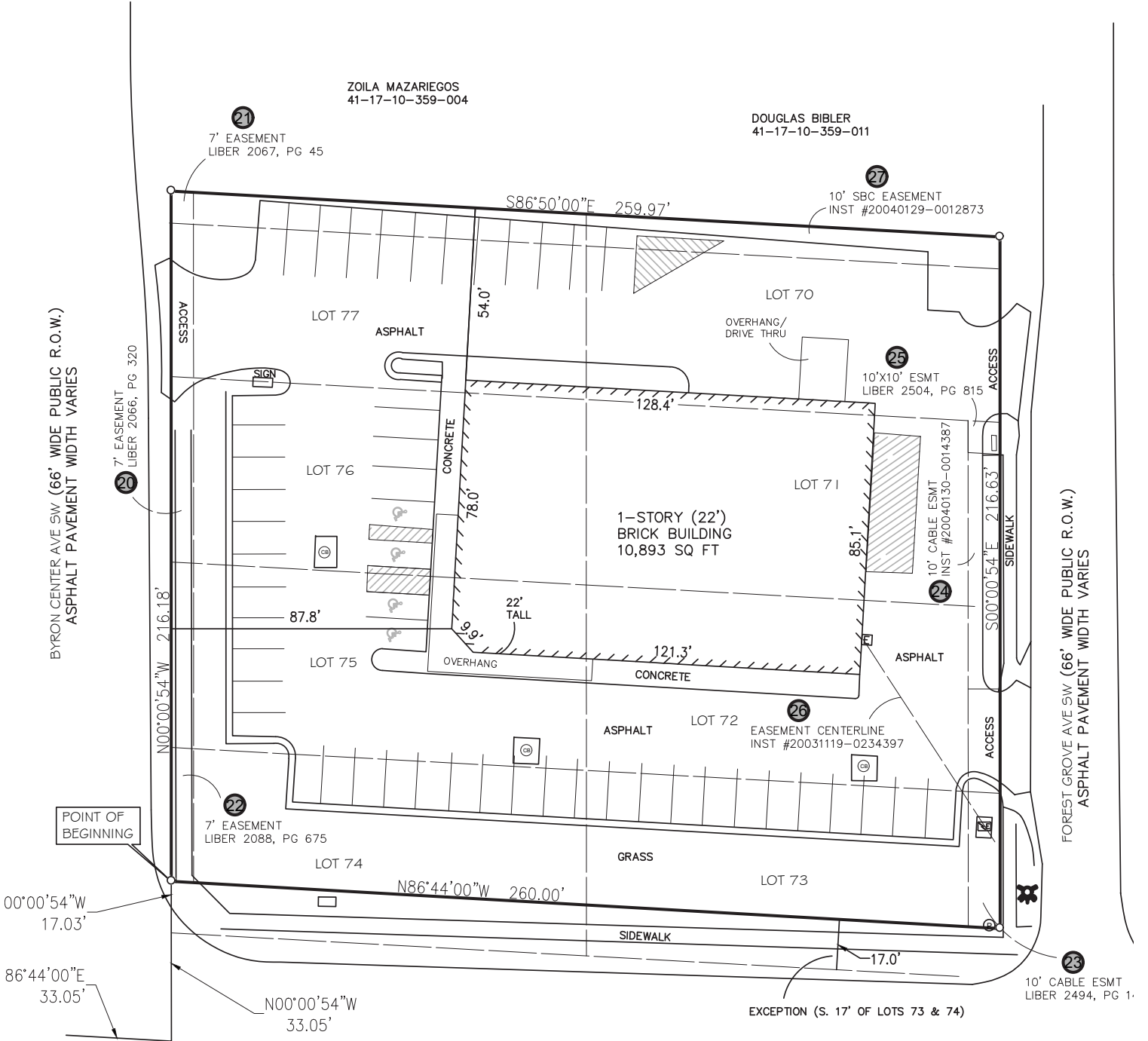
Russ Bono, CCIM
 Vice President
 +1 616 799 6629
 russ.bono@cbre.com

Cameron Timmer
 Vice President
 +1 616 485 4131
 cameron.timmer@cbre.com

© 2024 CBRE, Inc. All rights reserved. This information has been obtained from sources believed reliable, but has not been verified for accuracy or completeness. You should conduct a careful, independent investigation of the property and verify all information. Any reliance on this information is solely at your own risk. CBRE and the CBRE logo are service marks of CBRE, Inc. All other marks displayed on this document are the property of their respective owners, and the use of such logos does not imply any affiliation with or endorsement of CBRE. Photos herein are the property of their respective owners. Use of these images without the express written consent of the owner is prohibited.

Trade Area Map





28th STREET SW (VARIABLE WIDTH PUBLIC R.O.W.)
ASPHALT PAVEMENT WIDTH VARIES