

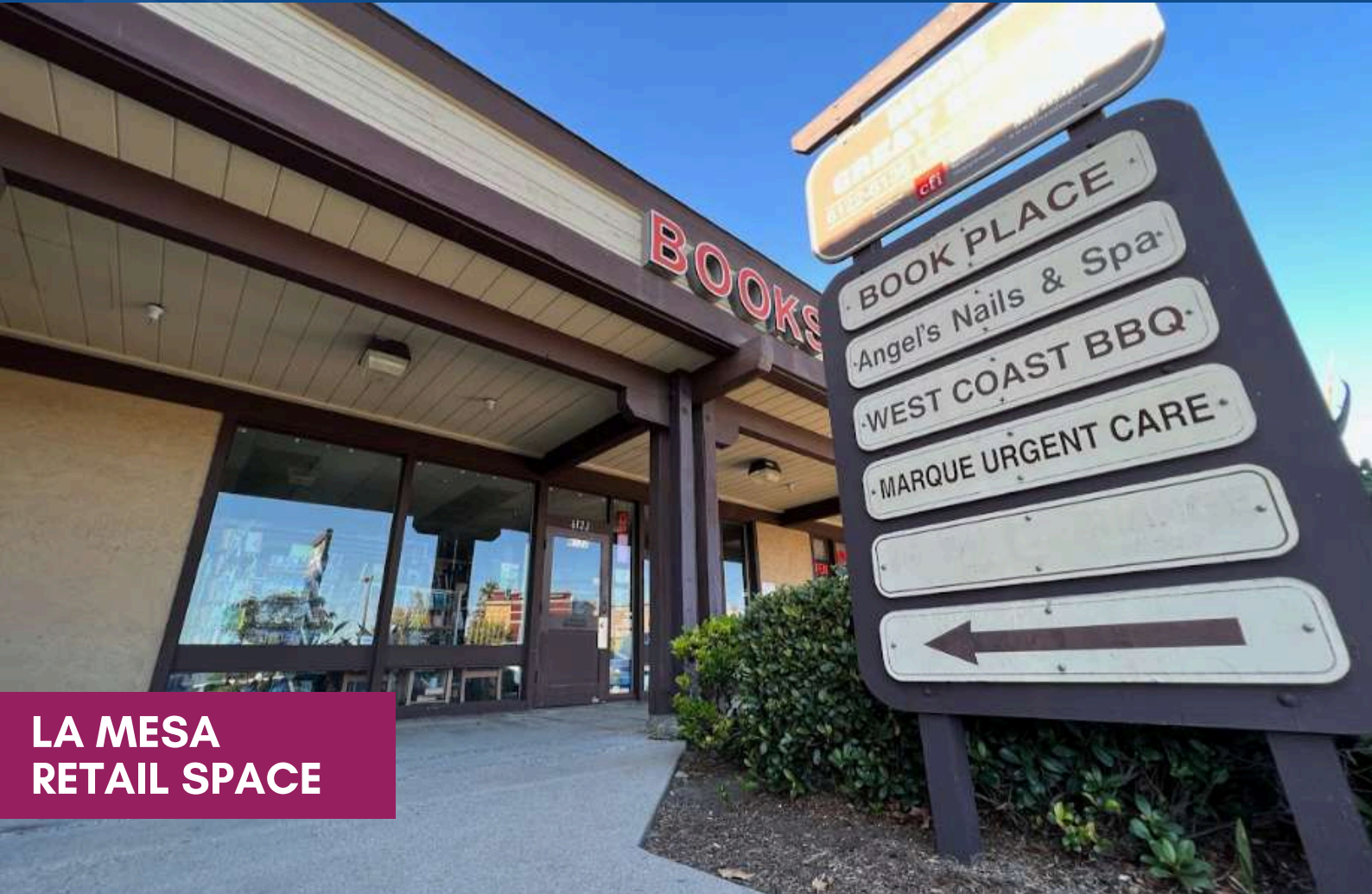
FOR LEASE

6122 Lake Murray Blvd.

La Mesa, CA 91942



CAPITAL GROWTH
PROPERTIES, INC.



LA MESA
RETAIL SPACE

PROPERTY HIGHLIGHTS

- ✓ **Exceptional Signage & Visibility:** Stand out with prominent signage options, ensuring high visibility to passersby and motorists.
- ✓ **Abundant Parking:** Benefit from a generous parking ratio of 9.7 spaces per 1,000 retail SF, offering ample space for your customers and employees.
- ✓ **Prime Retail Anchor:** Located in a center anchored by Ross Dress for Less, attracting consistent foot traffic and a diverse customer base.

AVAILABLE SPACE

SF	RATE (PSF)
1,800	\$2.50 + NNN (\$1.05)



FOR LEASE

6122 Lake Murray Blvd.

La Mesa, CA 91942



CAPITAL GROWTH
PROPERTIES, INC.



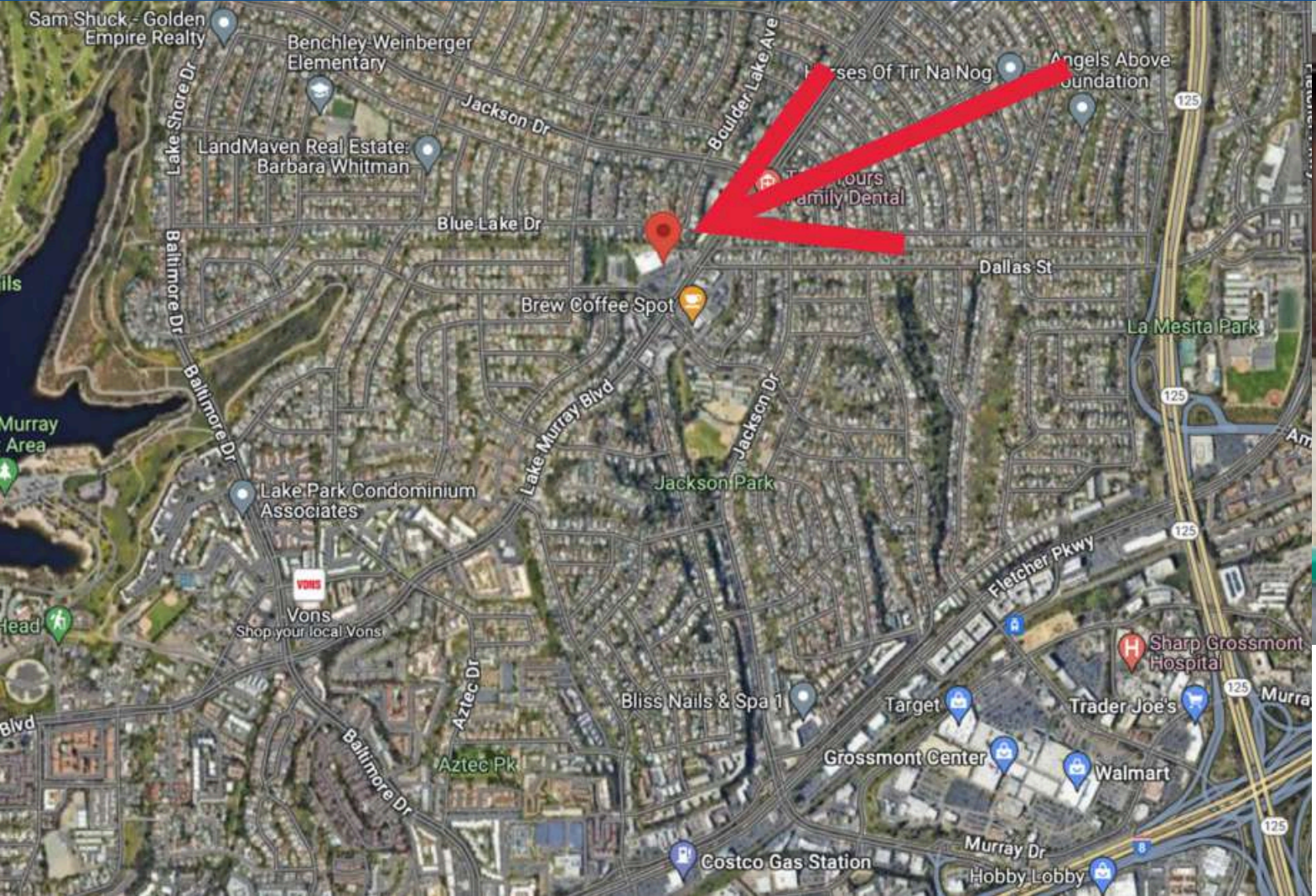
FOR LEASE

6122 Lake Murray Blvd.

La Mesa, CA 91942



CAPITAL GROWTH
PROPERTIES, INC.



FOR LEASE

6122 Lake Murray Blvd.

La Mesa, CA 91942



CAPITAL GROWTH
PROPERTIES, INC.



Alan Cox

"Todd is an extremely professional Realtor that has helped clients of mine find commercial properties. Whenever I send a client his way, I know that they will be very well taken care of and I get nothing but rave reviews. I highly recommend Todd!"



Todd Law

Senior Vice President

tlaw@cgpinc.com

858.729.9305

CA DRE 01309241

WA DOL 27587

Capital Growth Properties, Inc.



1120 Silverado Street, Suite 200

La Jolla, CA 92037



858.729.9300



www.cgpinc.com



[@cgpinc](https://www.instagram.com/cgpinc)

www.cgpinc.com