



CLARION PARTNERS

For Lease

North 15 Logistics
6714 E North Belt Rd.
North Las Vegas, NV 89115



±177,238 SF Available

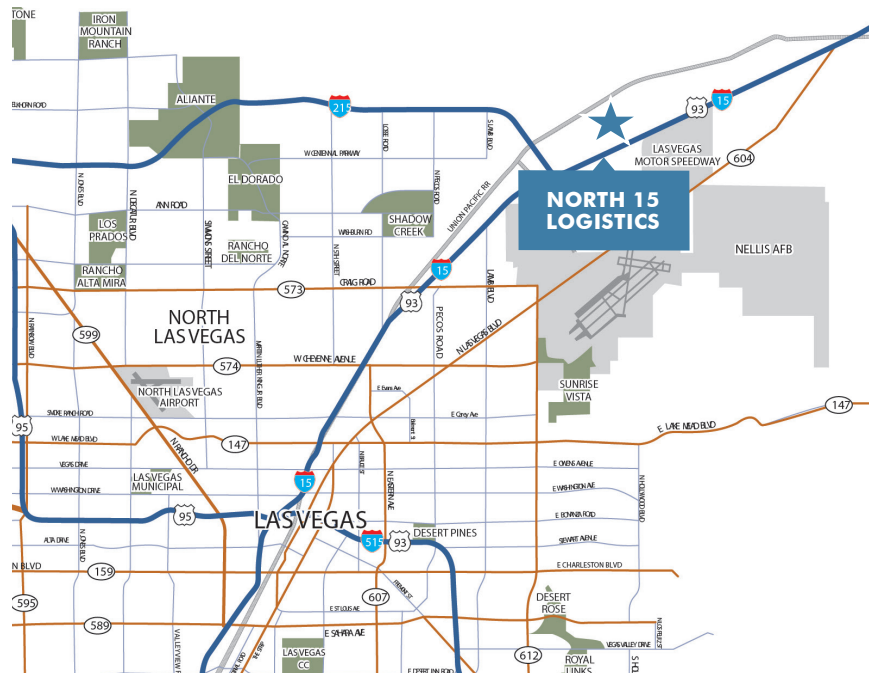


LOCATION HIGHLIGHTS

- Immediate access to I-15 via Speedway Blvd. Interchange
- Building Signage with direct I-15 visibility
- City of North Las Vegas jurisdiction

BUILDING HIGHLIGHTS

- ±177,238 SF available
- Spec Office:
 - NWC: 2,678 SF
 - SWC: 3,582 SF
- 32' Clear Height
- ESFR sprinklers
- R-30 roof batt insulation
- 104 parking stalls
- M-2 zoning
- Concrete truck court



This information contained herein was obtained from sources deemed reliable and is believed to be true. It has not been verified and as such, cannot be warranted nor form any part of any future contract.



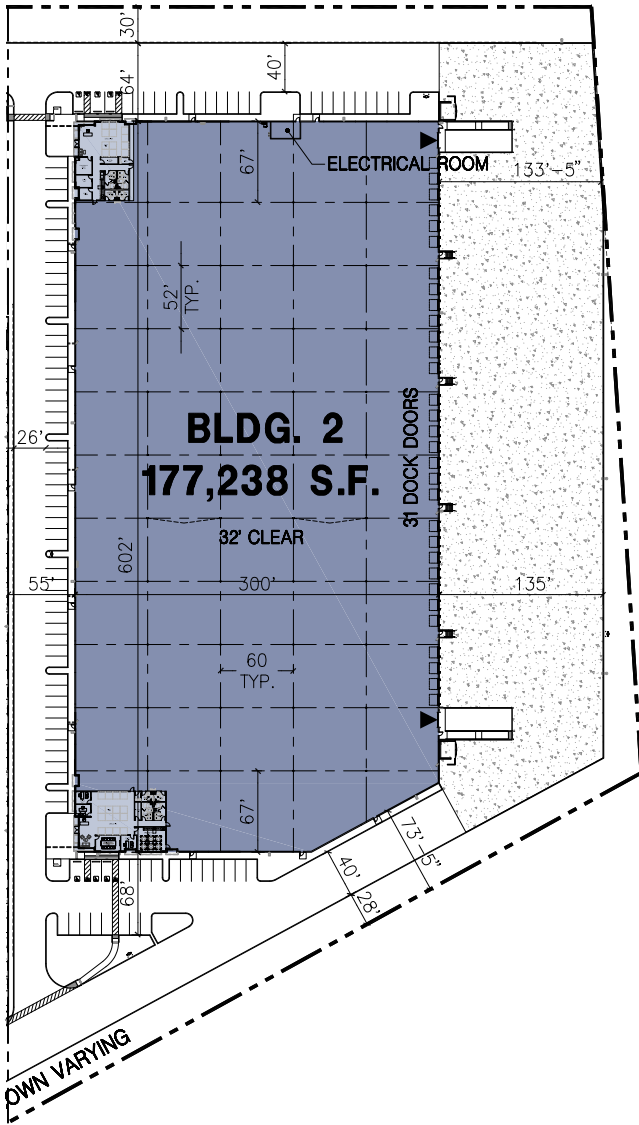
6714 E North Belt Rd

- ±177,238 SF total
- Spec Office:
- NWC: 2,678 SF
- SWC: 3,582 SF
- Rear loaded configuration
- 32' clear height
- 31 (9' x 10') dock doors
- 2 (12' x 14') grade door
- 2,000 amps, 277/480 V, 3-Phase power
- ESFR fire sprinklers
- 1.5% skylights
- 135' concrete truck court with 60' concrete apron
- 6" thick concrete floors
- 104 parking stalls
- potential for secured truck court

Available July 2026

RATE: Call for pricing

CAM: \$0.17 PSF/Mo/NNN

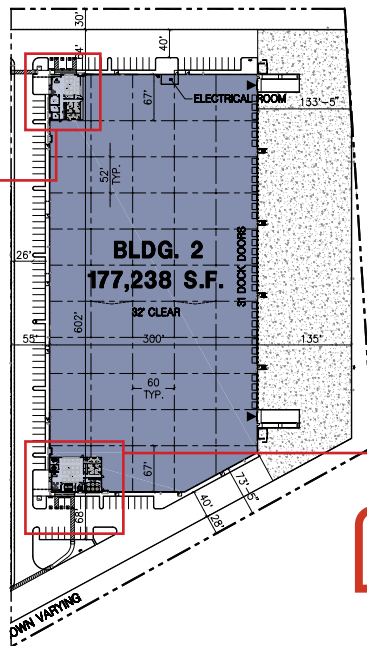
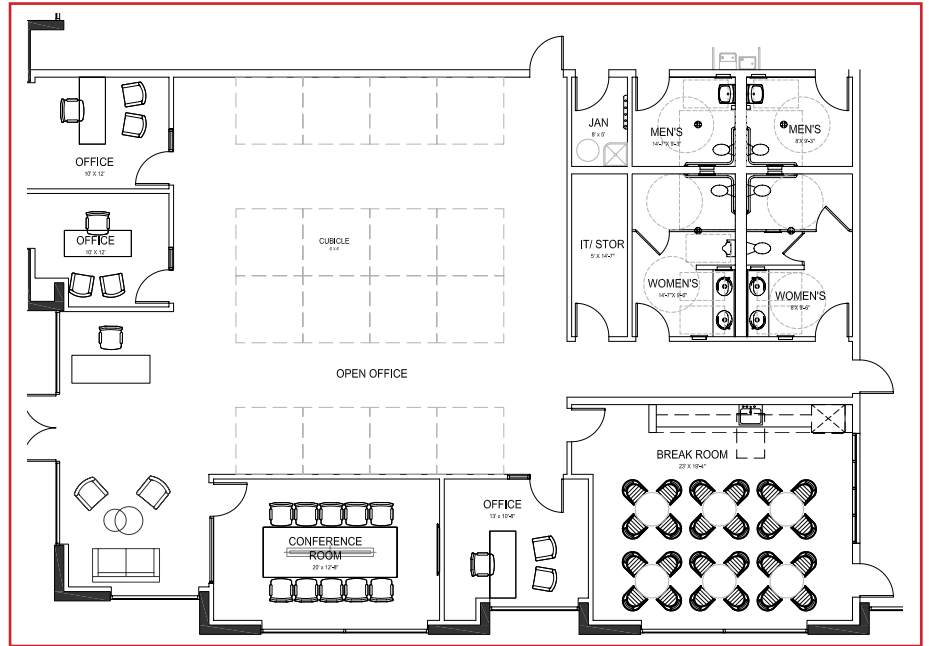
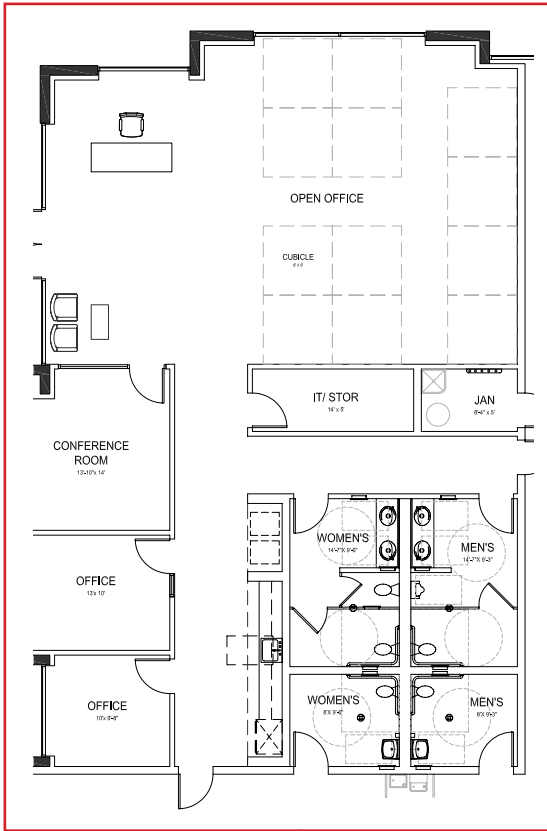


- GRADE DOOR
- ▲ DOCK DOOR



NWC Office: 2,678 SF

SWC Office: 3,582 SF



For more information on this opportunity, please contact:



Jake Higgins, SIOR
 Executive Vice President
 +1 702 369 4844
 jake.higgins@cbre.com
 Lic. S.0176473

Sean Zaher, SIOR
 Executive Vice President
 +1 702 369 4863
 sean.zaher@cbre.com
 Lic. S.0175473



CLARION PARTNERS

A Franklin Templeton Company

www.clarionpartners.com

Kelsey Higgins
 Senior Associate
 +1 702 369 4812
 kelsey.higgins@cbre.com
 Lic. S.0192524