



REGIONAL INDUSTRIAL DEVELOPMENT CORPORATION



RIDC

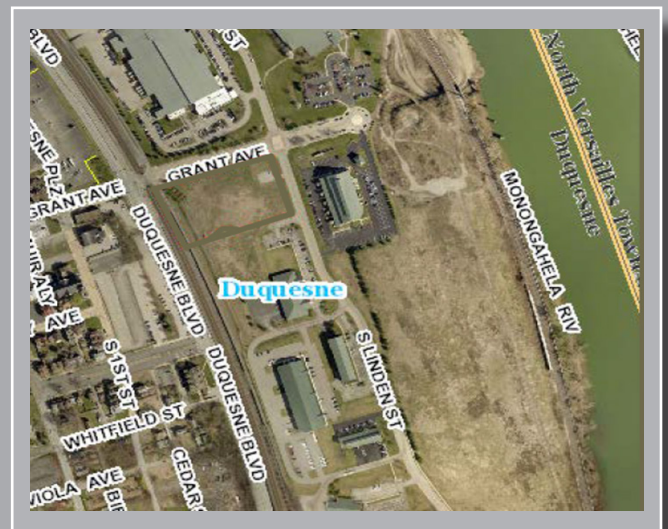
CITY CENTER OF DUQUESNE

RIVERFRONT PARCELS FOR SALE

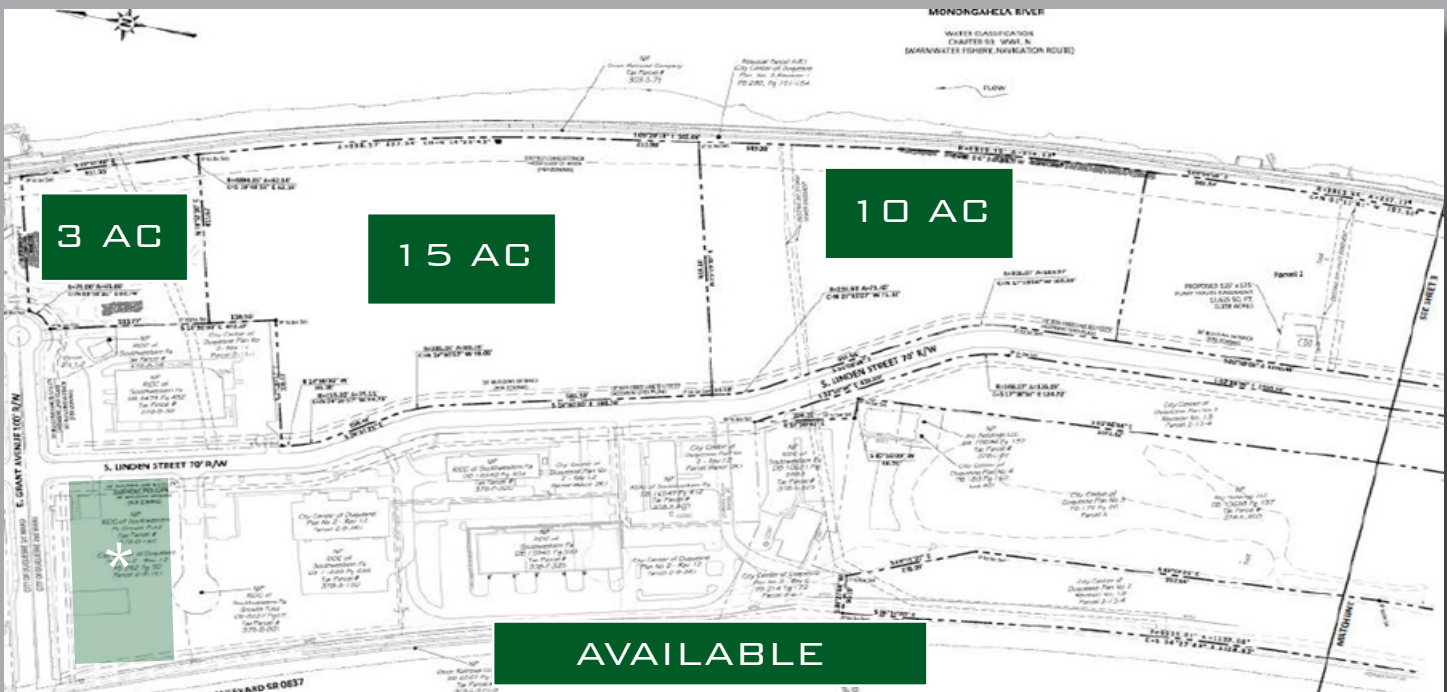
THE PARK/PARCELS AT A GLANCE

AFTER TAKING CONTROL OF THE FORMER DUQUESNE STEEL WORKS SITE IN 1987, ALLEGHENY COUNTY ASKED RIDC TO CLEAN UP AND REDEVELOP THE 240-ACRE SITE IN CONJUNCTION WITH THE MCKEESPORT AREA RECOVERY PLAN. SINCE THEN, RIDC HAS RENOVATED SIX EXISTING BUILDINGS AND IN 2015 BUILT THE 30,000 SQUARE-FOOT MILLWRIGHTS BUILDING.

- VACANT COMMERCIAL LAND
- GROSS AREA VARIOUS
- RIVERFRONT LAND
- SOLD AS-IS
- OPEN WORK AREA
- UTILITIES IN ROAD
- ACCESS TO PA-837, 376 EAST
- SIGNAGE OPPORTUNITY
- BUILD TO SUIT AVAILABLE

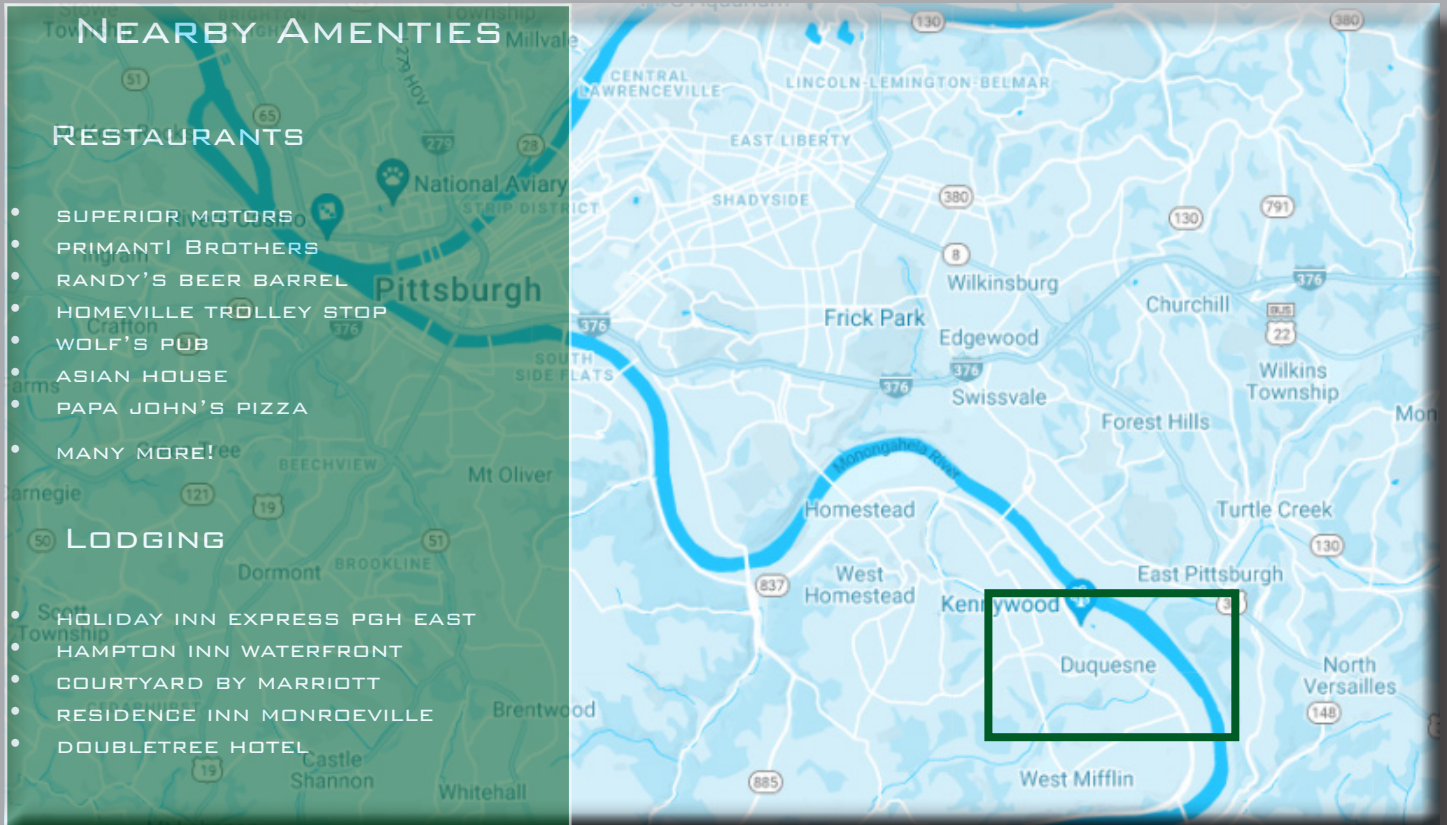


RIVERFRONT PARCEL PROPOSED SUBDIVISIONS



* ADDITIONAL 3 ACRES (APPROX.) OF NON-RIVERFRONT LAND

THE LOCATION



LANDLORD SPOTLIGHT

RIDC IS A NONPROFIT ORGANIZATION FOUNDED BY AND FOR THE PITTSBURGH REGION. WE TRACE OUR HISTORY BACK MORE THAN 60 YEARS, TO A TIME WHEN LEADERS IN THE REGION ENVISIONED A ENTITY DEDICATED TO DEVELOPING PROPERTIES THAT WOULD SUPPORT OUR INDUSTRIAL BASE, CREATE JOBS, AND GROW OUR ECONOMY. RIDC WENT ON TO PIONEER THE REGION'S FIRST INDUSTRIAL PARKS, AND WHEN THE STEEL INDUSTRY DECLINED, WE CONTINUED TO SUPPORT THE REGION BY TAKING ON THOSE ABANDONED INDUSTRIAL SITES, ATTRACTING NEW TECHNOLOGY-BASED COMPANIES AND RETURNING THOSE PROPERTIES BACK ON TO THE TAX ROLLS.

TODAY, WE ARE STILL DEDICATED TO CATALYZING ECONOMIC GROWTH IN SOUTHWESTERN PENNSYLVANIA THROUGH REAL ESTATE DEVELOPMENT THAT CAPTURES GROWTH OPPORTUNITIES ACROSS DIVERSE INDUSTRY SECTORS AND FOSTERS INCLUSIVE HIGH-QUALITY JOB CREATION. FROM THE PITTSBURGH TECHNOLOGY CENTER TO THE SUSTAINABLE MILL 19, RIDC HAS BEEN ON THE FOREFRONT OF PROVIDING SPACES FOR THE GROWTH OF TECHNOLOGY AND INNOVATION WITHIN THE SOUTHWESTERN PA REGION. WE VIEW RIDC'S SUCCESS AS PART OF A LARGER VISION FOR OUR REGION; OUR DECISIONS ARE MOTIVATED BY THE ECONOMIC DEVELOPMENT POTENTIAL OF OUR PROJECTS AND THE ABILITY OF OUR FACILITIES AND OUR TENANTS TO IMPACT THE OVERALL COMMUNITY.

RIDC

REGIONAL INDUSTRIAL DEVELOPMENT CORPORATION



CITY CENTER OF DUQUESNE

LEASING CONTACT

MICHAEL HEINRICHER
DIRECTOR OF ASSET MANAGEMENT
MHEINRICHER@RIDC.ORG
412-315-6456

