



FOR LEASE | **157,039 SF**
4201 MURRAY PLACE | **LYNCHBURG, VA**

ANTHONY CRIVELLO 414-982-4810 | ANTHONY@PHOENIXINVESTORS.COM

This document has been prepared by Phoenix Investors for advertising and general information only. Phoenix Investors makes no guarantees, representations, or warranties of any kind, expressed or implied, regarding the information including, but not limited to, warranties of content, accuracy, and reliability.



PHOENIX
INVESTORS

Opportunity. Execution. Value Creation.



PROPERTY HIGHLIGHTS



**TWO RAIL SPURS WITH
INTERIOR LOADING; 6-CAR
CAPACITY; RAIL PROVIDER:
NORFOLK SOUTHERN**



**LARGE
PARKING FIELD**



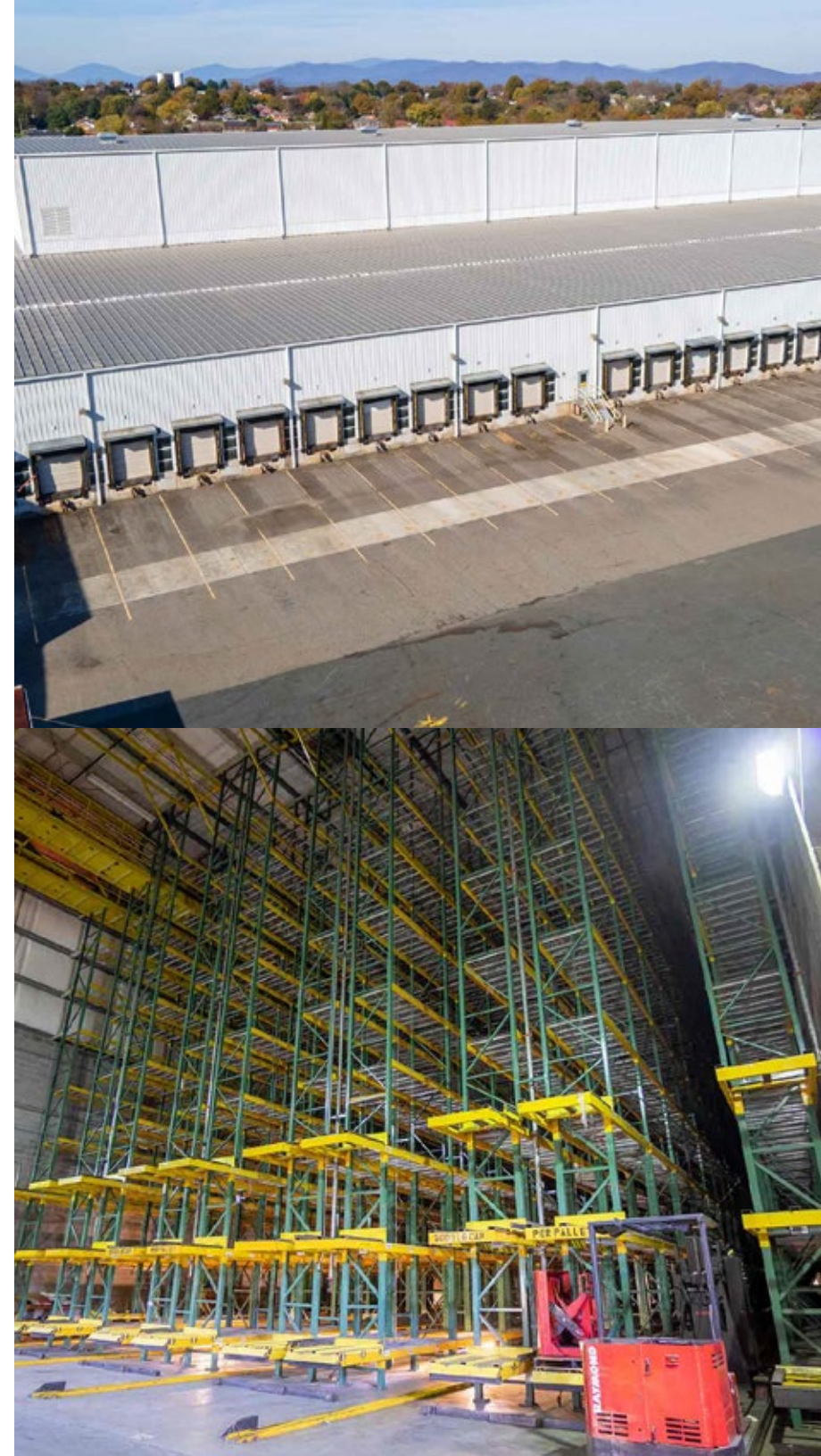
**AMPLE ACREAGE
FOR EXPANSION**



PROPERTY DETAILS

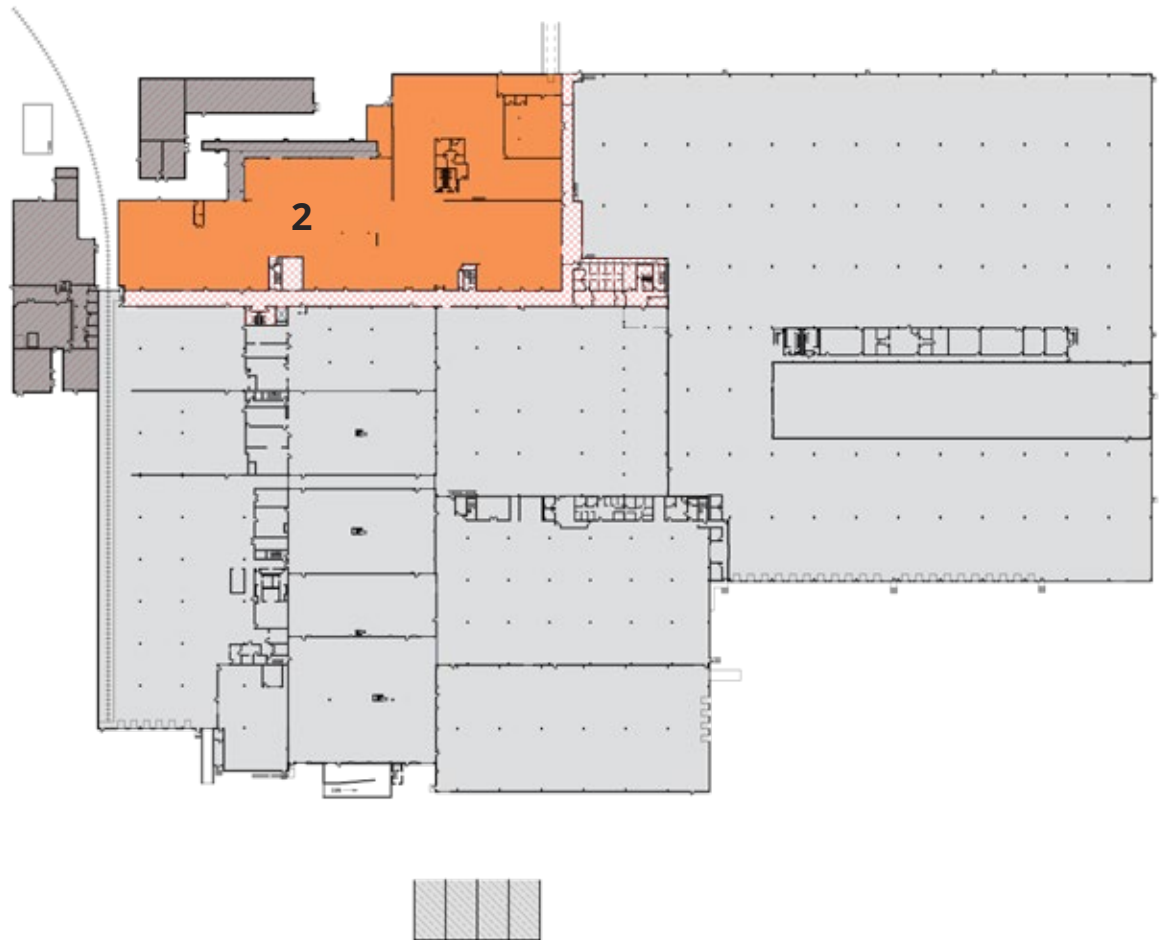
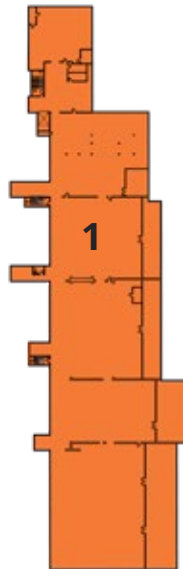
4201 MURRAY PLACE | LYNCHBURG, VA

AVAILABLE SPACE	157,039 SF
MINIMUM DIVISIBLE	Office: 20,000 SF
LOWER LEVEL WAREHOUSE SPACE	56,830 SF
SECOND FLOOR OFFICE SPACE	39,298 SF
SERVICE TYPE	NNN
FLOORS	2
ELEVATORS	1
DOCK DOORS	32
DRIVE-IN DOORS	8
CLEAR HEIGHT	18', 22', 24', 32', PRA 58', 14' Basement
COLUMN WIDTH/DEPTH	40' x 40' x 40' x 60' 20' x 20'
ROOF	Tar & Gravel Single Ply & Metal
WALLS	Concrete, Cinder Block, & Insulated Metal
FLOORS	Mainly Reinforced Concrete; Offices Tiled & Carpeted
YEAR BUILT	1970 Renovated Multiple Times
FIRE SUPPRESSION	100% Wet
LIGHTING	Fluorescent Lighting T-12, T-8, and T-5 & Mercury Vapor Lighting on Parking Lot
POWER	Power Capacity of 13,200 Volts, 8 Megawatts
PARKING	532 Vehicle Parking Spots throughout the Property; 62 Slots for Trailer Parking/Slotting
LAND AREA	49.66 Acres
ZONING	I-3: Heavy Industrial
RAIL	Two Rail Spurs with Interior Loading; 6-Car Capacity; Rail Provider: Norfolk Southern

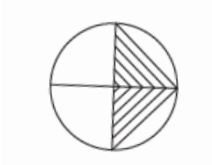


FLOOR PLAN

4201 MURRAY PLACE | LYNCHBURG, VA



NUMBER	SPACE DESIGNATION	SQUARE FEET
1	LOWER LEVEL WAREHOUSE	56,830 SF
2	AVAILABLE WAREHOUSE	60,911 SF
2	SECOND FLOOR OFFICE (NOT SHOWN)	39,298 SF
TOTAL		157,039 SF



LOCATION MAP

4201 MURRAY PLACE | LYNCHBURG, VA

LYNCHBURG REGIONAL AIRPORT 6 MILES

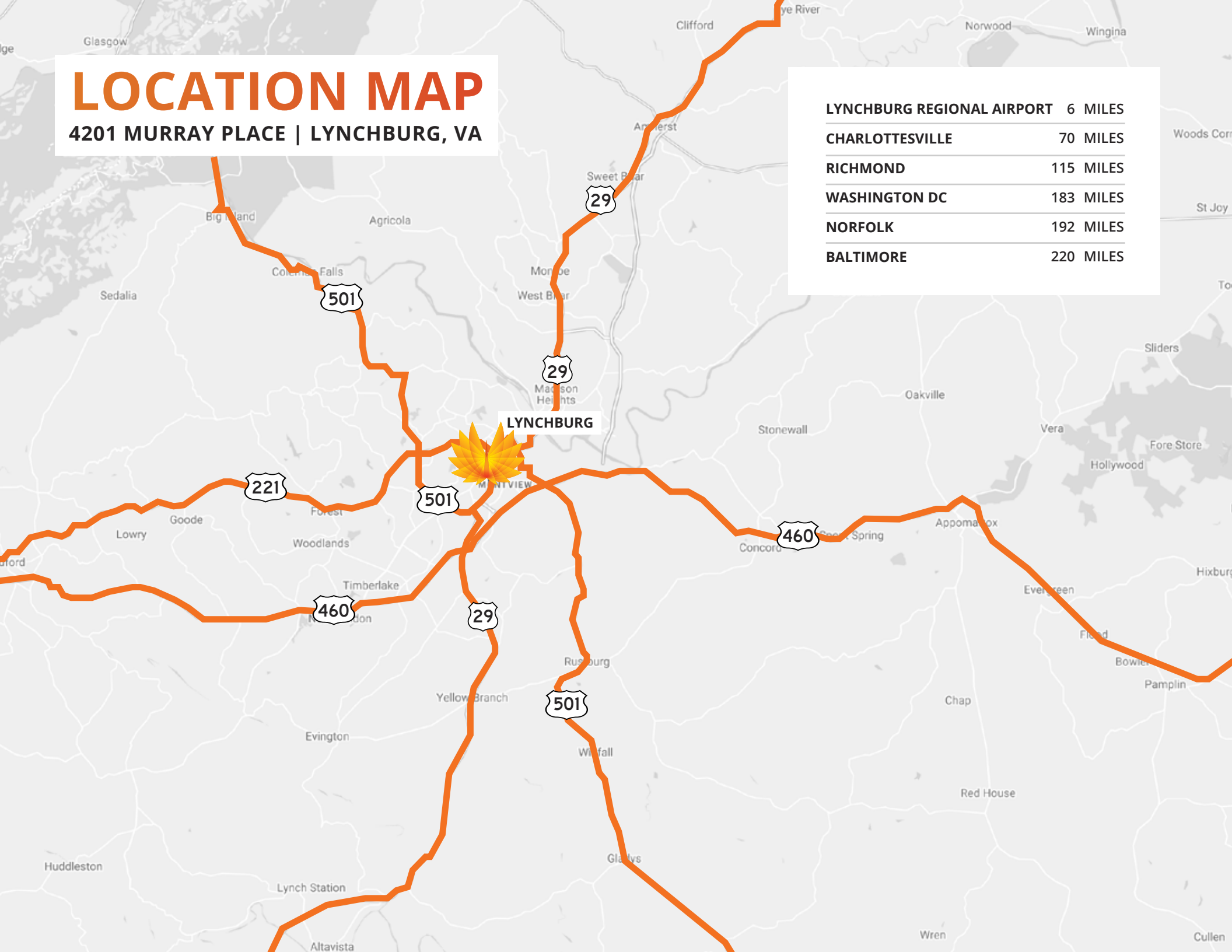
CHARLOTTESVILLE 70 MILES

RICHMOND 115 MILES

WASHINGTON DC 183 MILES

NORFOLK 192 MILES

BALTIMORE 220 MILES





FOR LEASE | **157,039 SF**
4201 MURRAY PLACE | **LYNCHBURG, VA**
ANTHONY CRIVELLO 414-982-4810 | ANTHONY@PHOENIXINVESTORS.COM



PHOENIX
INVESTORS

Opportunity. Execution. Value Creation.