

**SUITE DETAILS****5,000 SF - \$10.00 SF NNN**

\*4 Offices \*Showroom \*1 Restroom

\*1-10x10 OH Door \*Warehouse area

**3,000 SF - \$8.00 SF NNN**

\*2 Offices \*Showroom \*2 Restrooms

\* 1-10x10 OH Door \*2,500 SF Warehouse

**CAM RATE: \$1.92 SF/YR****53905 CR 9 (Johnson St.)  
Elkhart, IN 46514****PROPERTY DETAILS**

Multi-tenant Flex property with 3,000 SF to 5,000 SF contiguous space

M-1 Zoning allows for many potential uses

15 ft eave height with 200 Amp 240 Volt power

Convenient location north of downtown Elkhart

1 mile to CR 6, 1.5 miles to Toll Road entrance or 4.5 miles to US 20

**Make contact.**

Brent C. Miller, SIOR  
Principal, Managing Broker  
Cell: 574-536-4438  
Direct: 574-501-3202  
brentm@endeavour-grp.com

**Make contact.**

Scott J. Griffith  
Principal, Senior Broker  
Cell: 574-849-7118  
Direct: 574-501-3206  
scottg@endeavour-grp.com

**Endeavour Commercial**  
22047 Endeavour Drive  
Elkhart, IN 46514  
P 574-292-7995  
endeavour-grp.com



**ENDEAVOUR**  
COMMERCIAL

FLEX SUITES AVAILABLE FOR LEASE



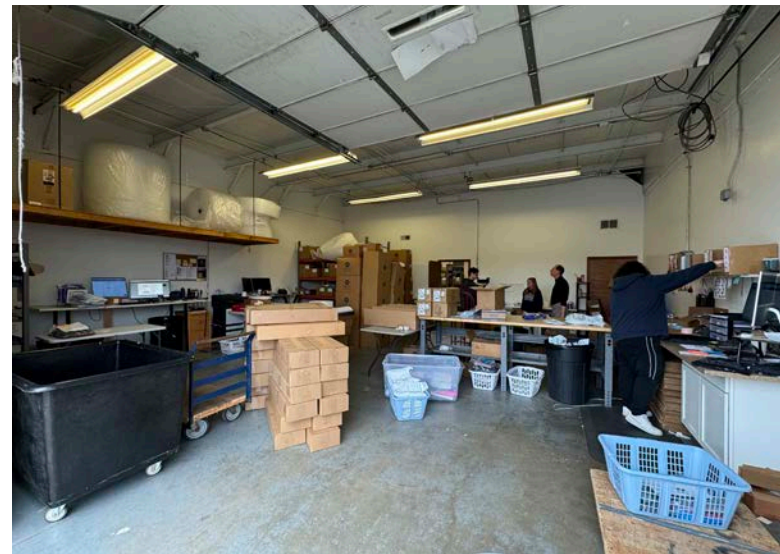
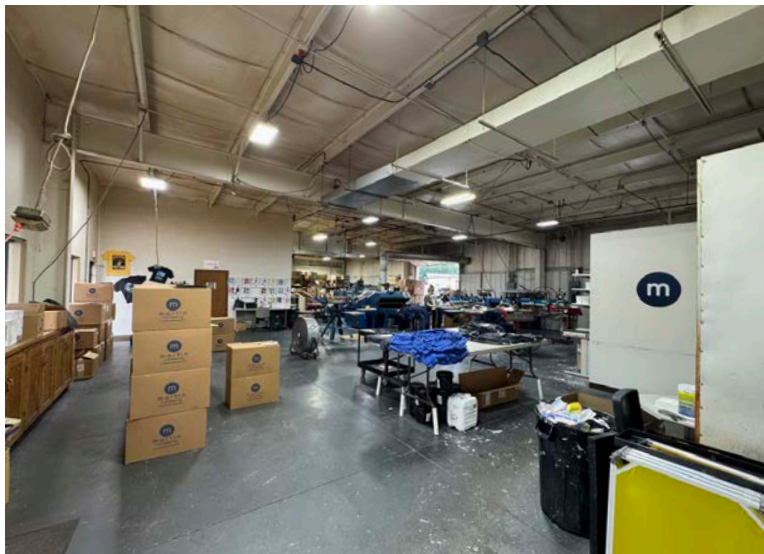
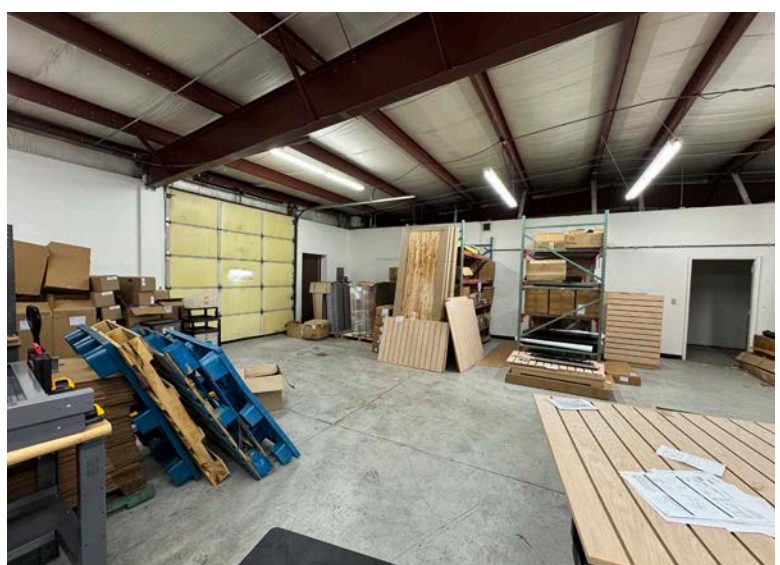
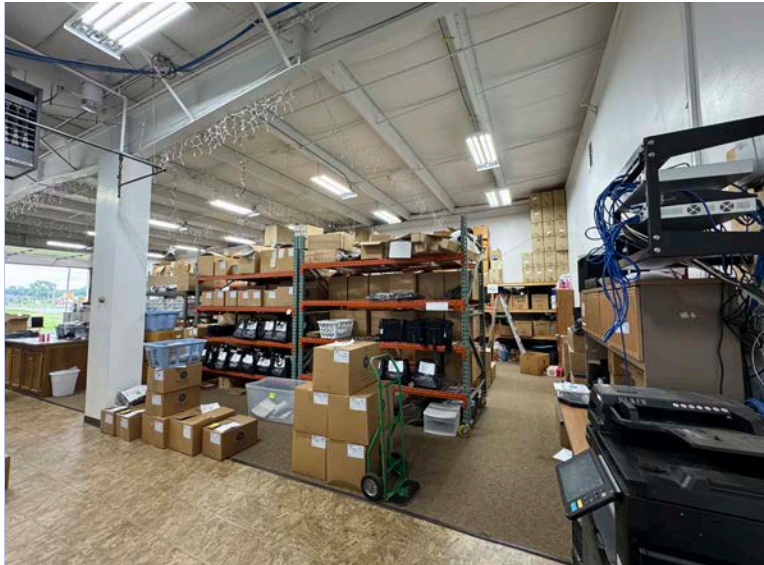
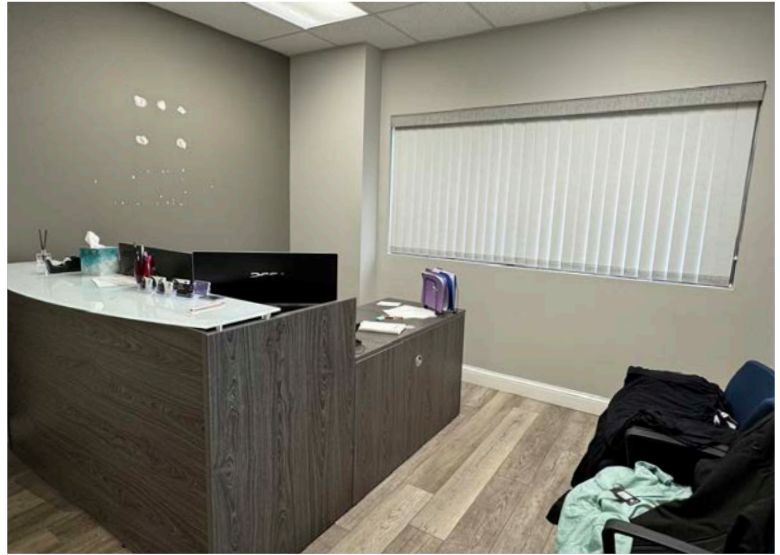
The information contained herein was obtained from sources believed to be reliable. We cannot be responsible for errors, omissions, prior sale or lease, change of price or withdrawal from the market without notice. No liability of any kind is to be imposed on the broker herein.





**ENDEAVOUR**  
COMMERCIAL

FLEX SUITES AVAILABLE FOR LEASE



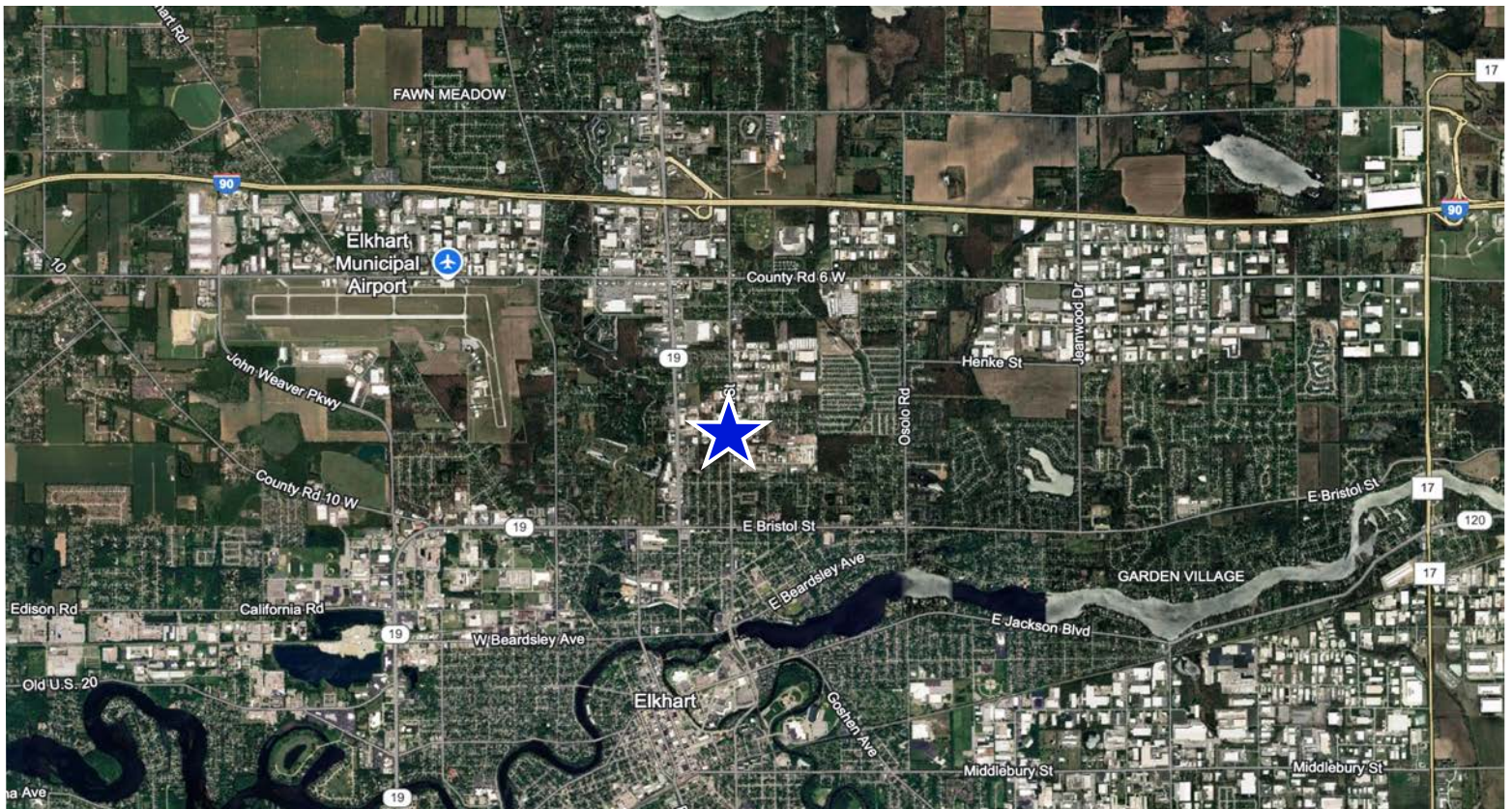
The information contained herein was obtained from sources believed to be reliable. We cannot be responsible for errors, omissions, prior sale or lease, change of price or withdrawal from the market without notice. No liability of any kind is to be imposed on the broker herein.





**ENDEAVOUR**  
COMMERCIAL

FLEX SUITES AVAILABLE FOR LEASE



The information contained herein was obtained from sources believed to be reliable. We cannot be responsible for errors, omissions, prior sale or lease, change of price or withdrawal from the market without notice. No liability of any kind is to be imposed on the broker herein.