



FOR LEASE
**SAN JOSE
CENTER**

3926-8859 SAN JOSE PARK DRIVE
JACKSONVILLE, FLORIDA 32217

RETAIL / OFFICE / MEDICAL



FOR LEASE **SAN JOSE CENTER**

3926-8859 SAN JOSE PARK DRIVE • JACKSONVILLE, FLORIDA 32217

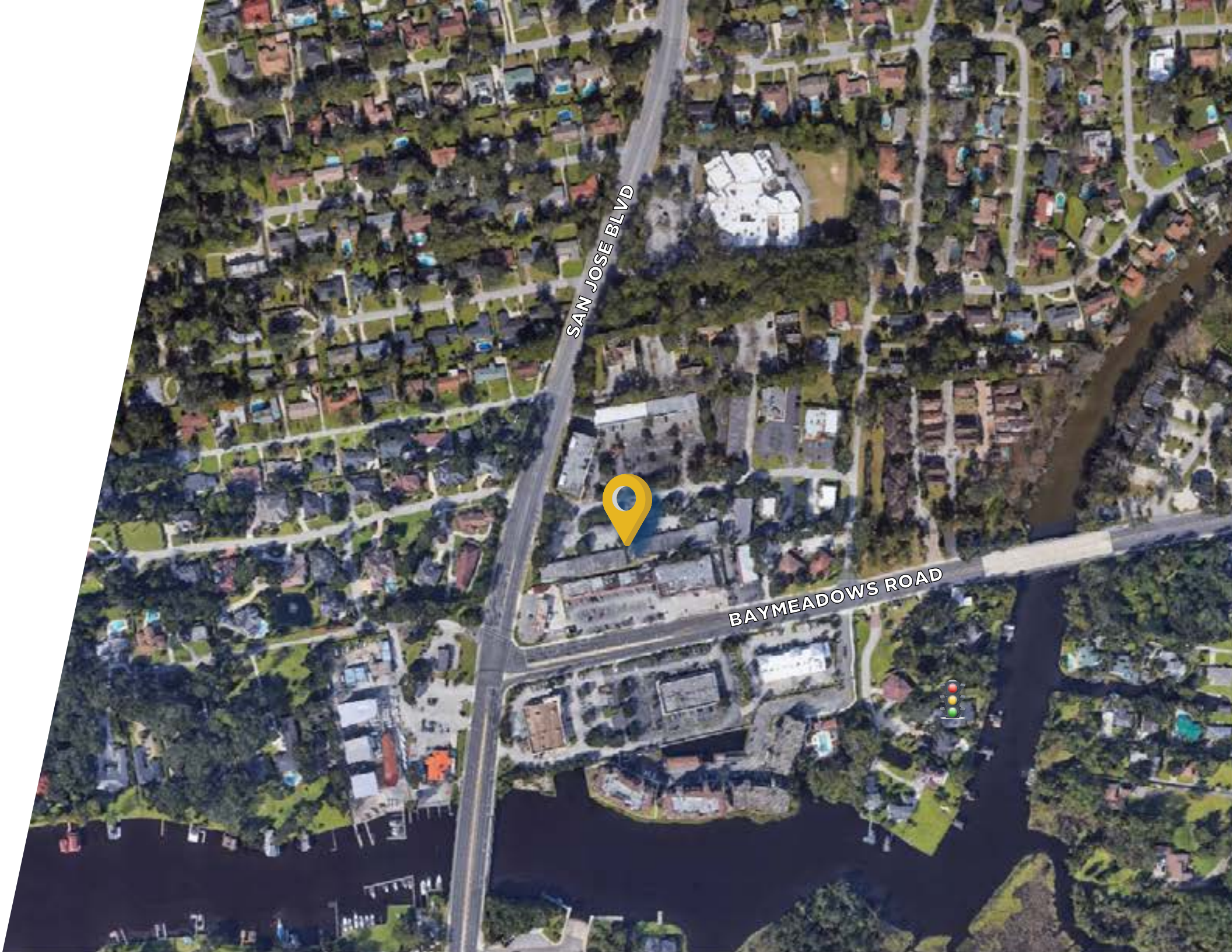


BUILDING AMENITIES

- Excellent visibility on San Jose Boulevard
- Ample parking for staff, clients and customers
- Multiple ingress/egress points
- Features walk up doors with individual access and exterior suite signage

PROPERTY HIGHLIGHTS

- Prime Commercial area between Mandarin and San Marco
- Pylon signage available
- Property management staff on site





SAN JOSE CENTER

BUILDING FEATURES

TOTAL SQ. FT. ±25,470 SF

TOTAL AVAILABLE ±1,652 SF

LEASE RATE Negotiable

ZONING CN / CRO

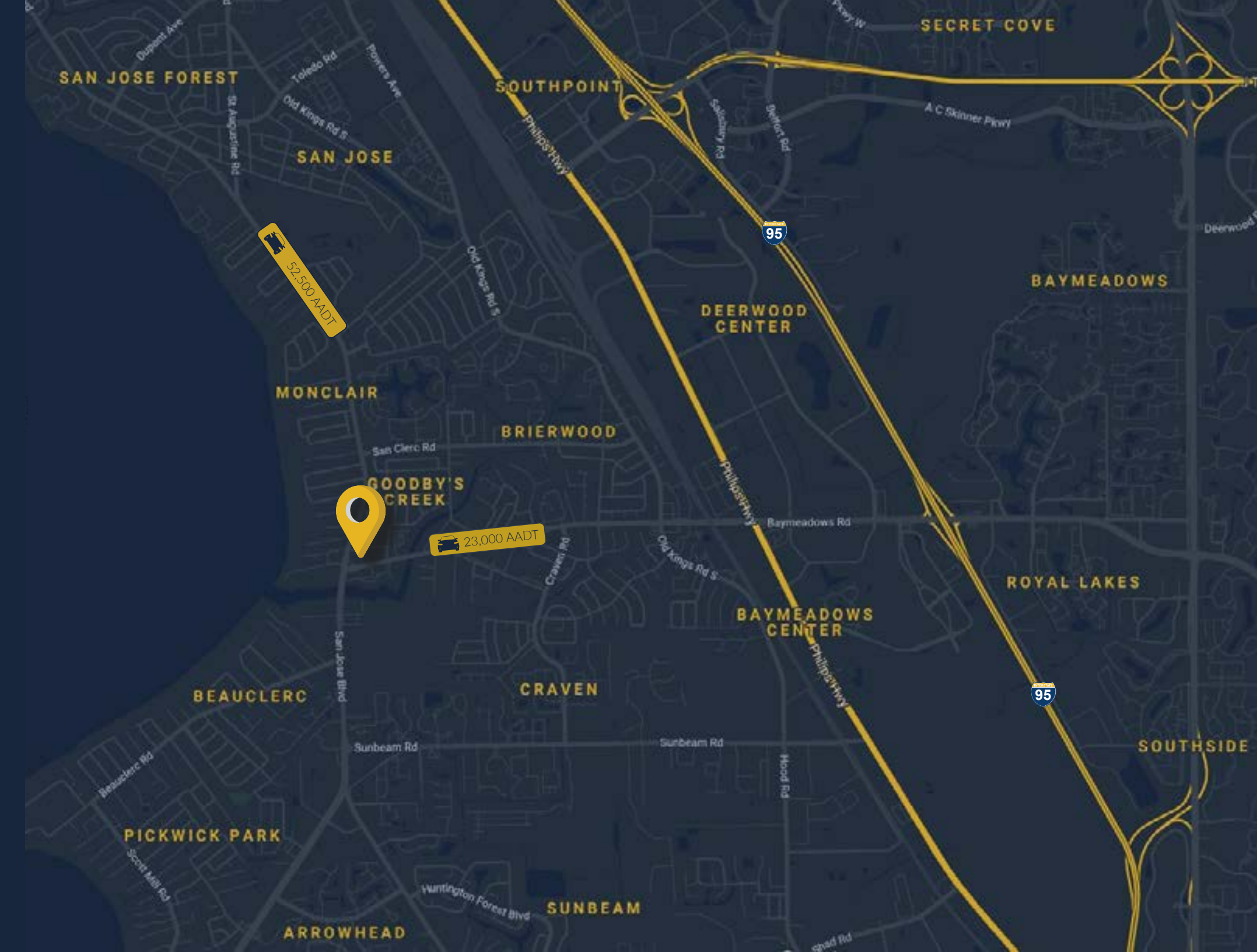
DEMOGRAPHICS	1 MILE	3 MILES	5 MILES
--------------	--------	---------	---------

POPULATION	11,680	61,679	158,597
------------	--------	--------	---------

HOUSEHOLDS	5,169	27,387	67,297
------------	-------	--------	--------

MEDIAN HH INCOME	\$52,676	\$51,896	\$56,776
------------------	----------	----------	----------

AVERAGE HH INCOME	\$69,701	\$72,114	\$77,397
-------------------	----------	----------	----------

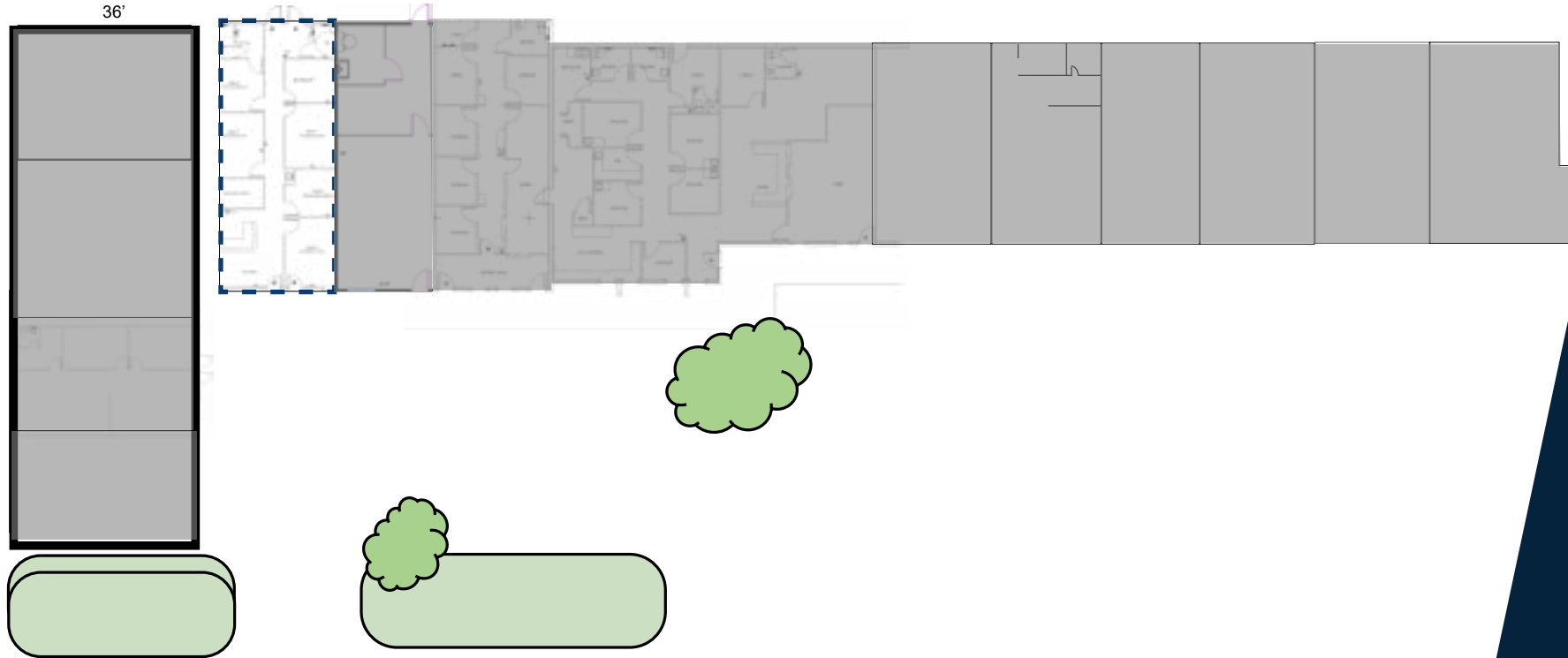


FOR LEASE

SAN JOSE CENTER

3926-3850 SAN JOSE PARK DRIVE • JACKSONVILLE, FLORIDA 32217

AVAILABLE
SUITE 3874
± 1,652 SF



FOR LEASE

SAN JOSE CENTER

8841-8859 SAN JOSE PARK DRIVE • JACKSONVILLE, FLORIDA 32217





John Hodges, Director of Real Estate Services

leasing@imc-jax.com

7915 Baymeadows Way
Suite 400
Jacksonville, FL 32256

T: 904.737.8846 x114

www.imc-jax.com

