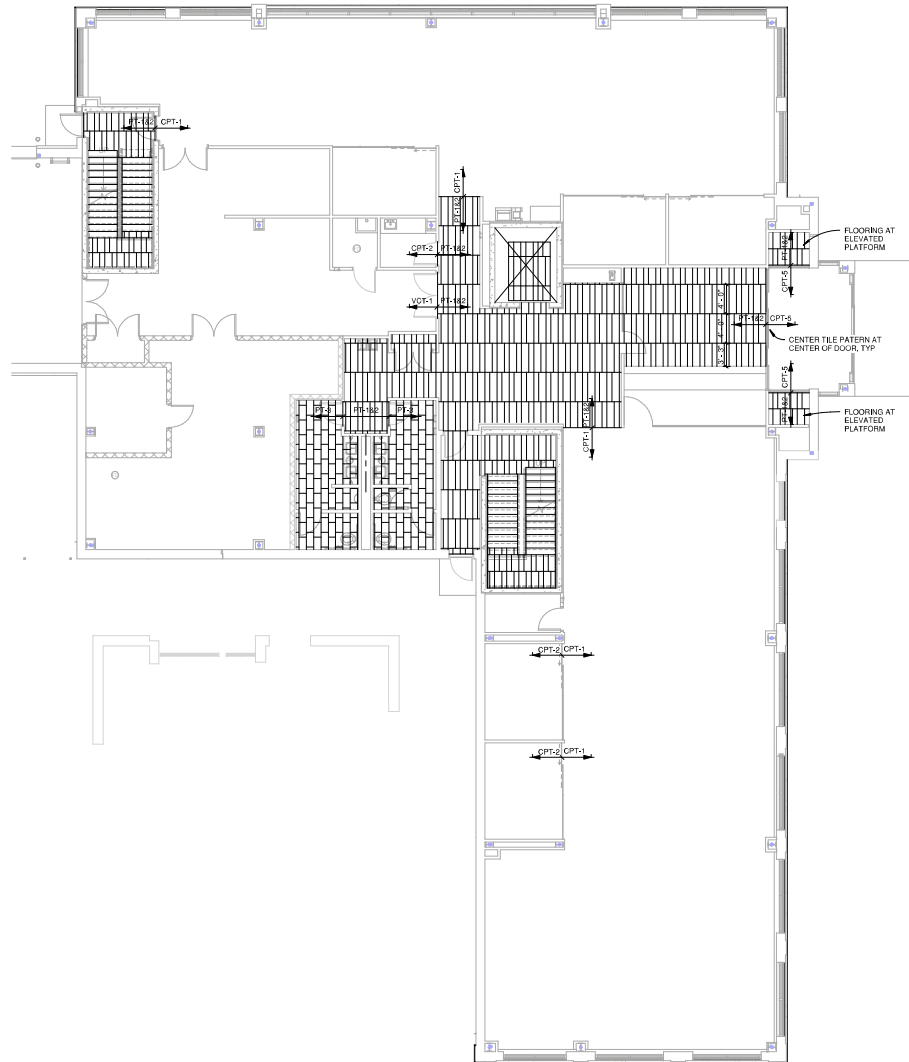


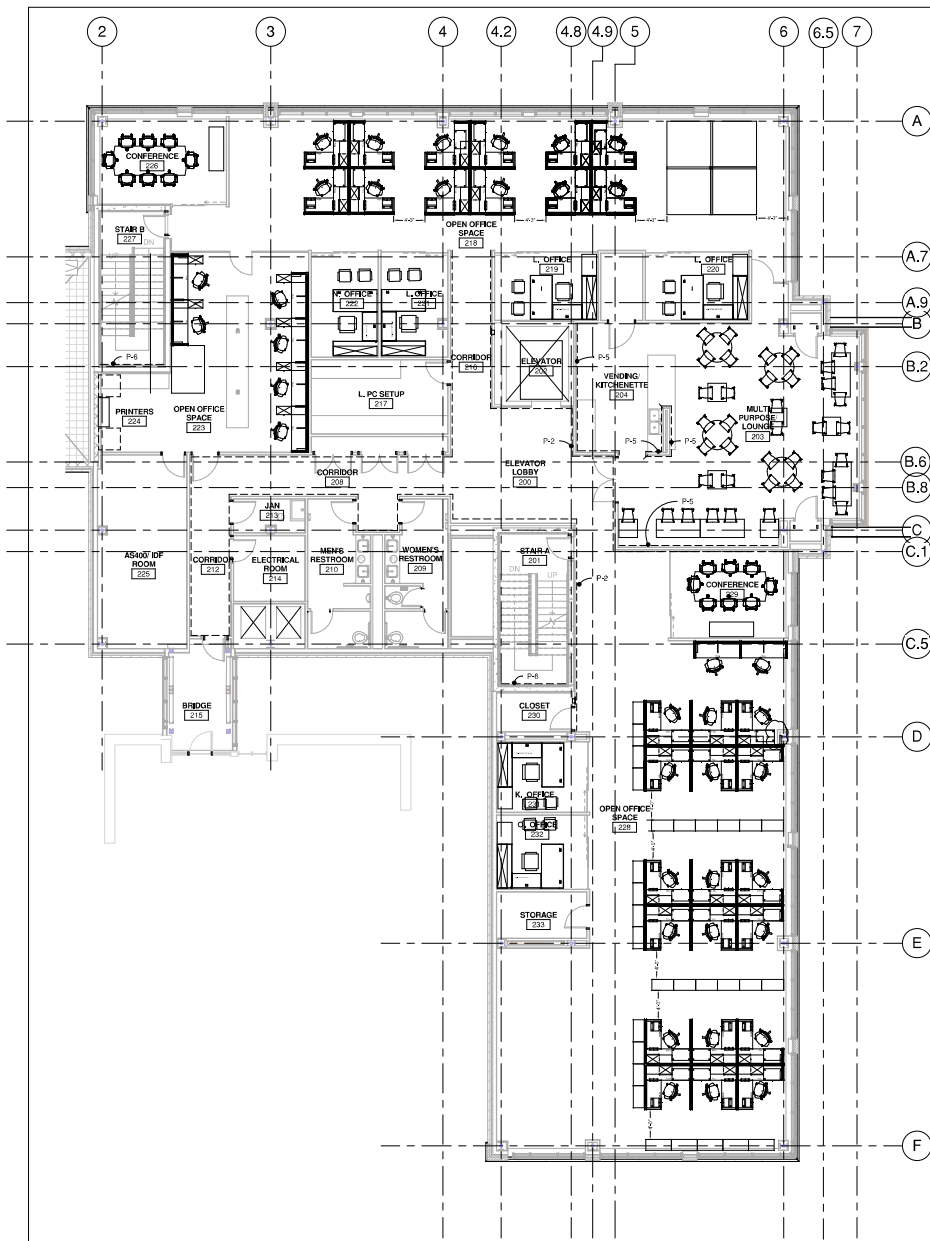
LEVEL 1- FURNISHING AND PAINTING
PLAN
1/8" = 1'-0"



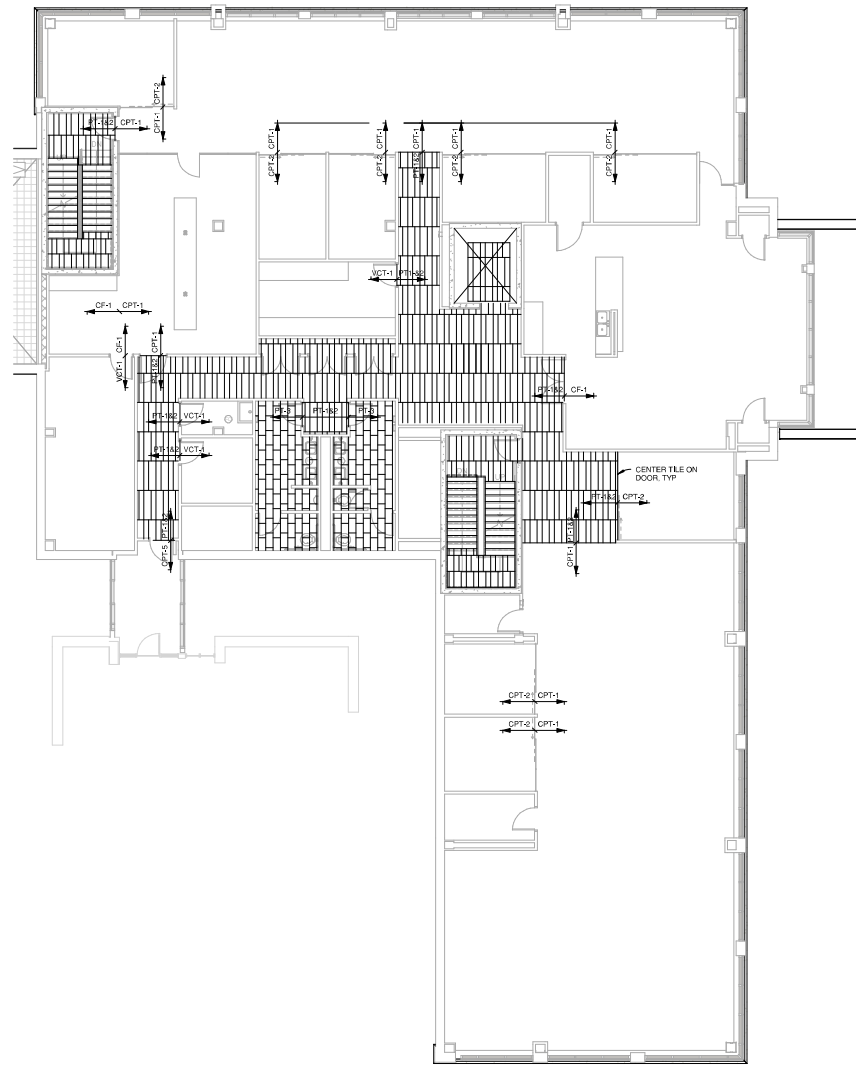
LEVEL 1- FINISH PLAN
1/8" = 1'-0"

LEVEL 1- FINISH AND FURNISHING PLANS
FLEXSTEEL-CORPORATE HEADQUARTERS
5TH ST. AND BELL ST.
DUBOQUE IA 52001

Rev	Description	Date	By
01	100% CONSTRUCTION DOCUMENTS	08/28/2011	



PLAN NORTH
LEVEL 2-FURNISHING PLAN
1/8" = 1'-0"



PLAN NORTH
LEVEL 2-FINISH PLAN
1/8" = 1'-0"

iiw
ARCHITECTURE
CIVIL ENGINEERING
CONSTRUCTION SERVICES
ENVIRONMENTAL ENGINEERING
LAND SURVEYING
MUNICIPAL ENGINEERING
STRUCTURAL ENGINEERING
TRANSPORTATION ENGINEERING
INTEGRITY. EXPERTISE. SOLUTIONS.
www.iiwengr.com 800.556.4491

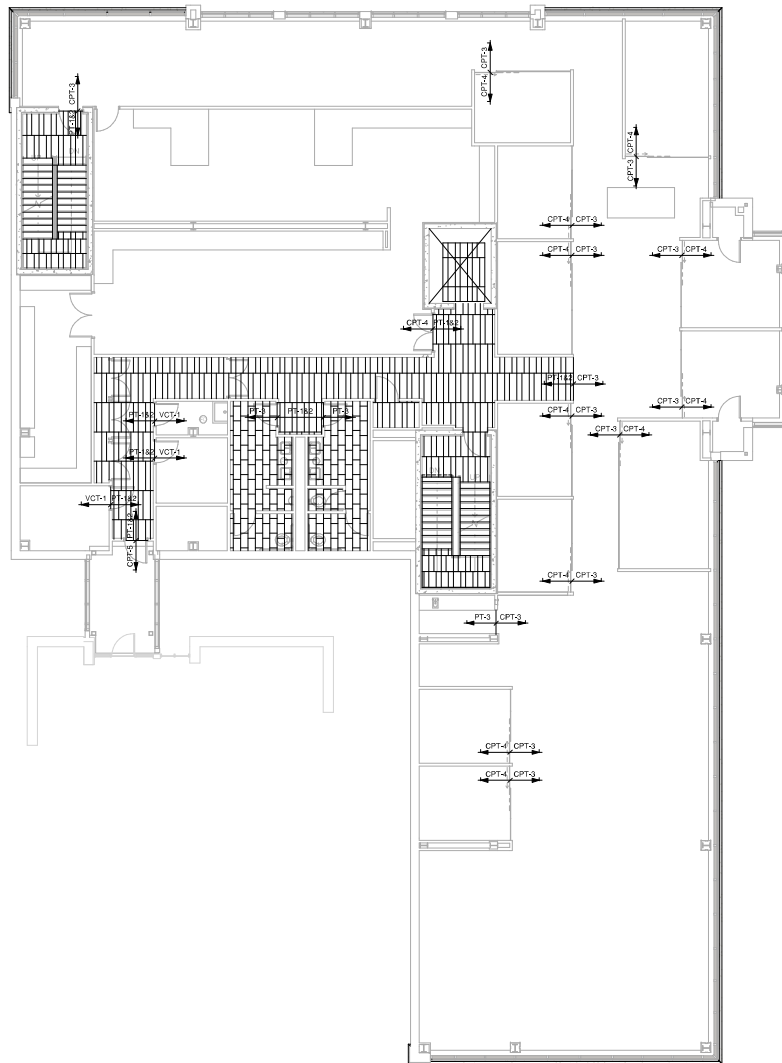
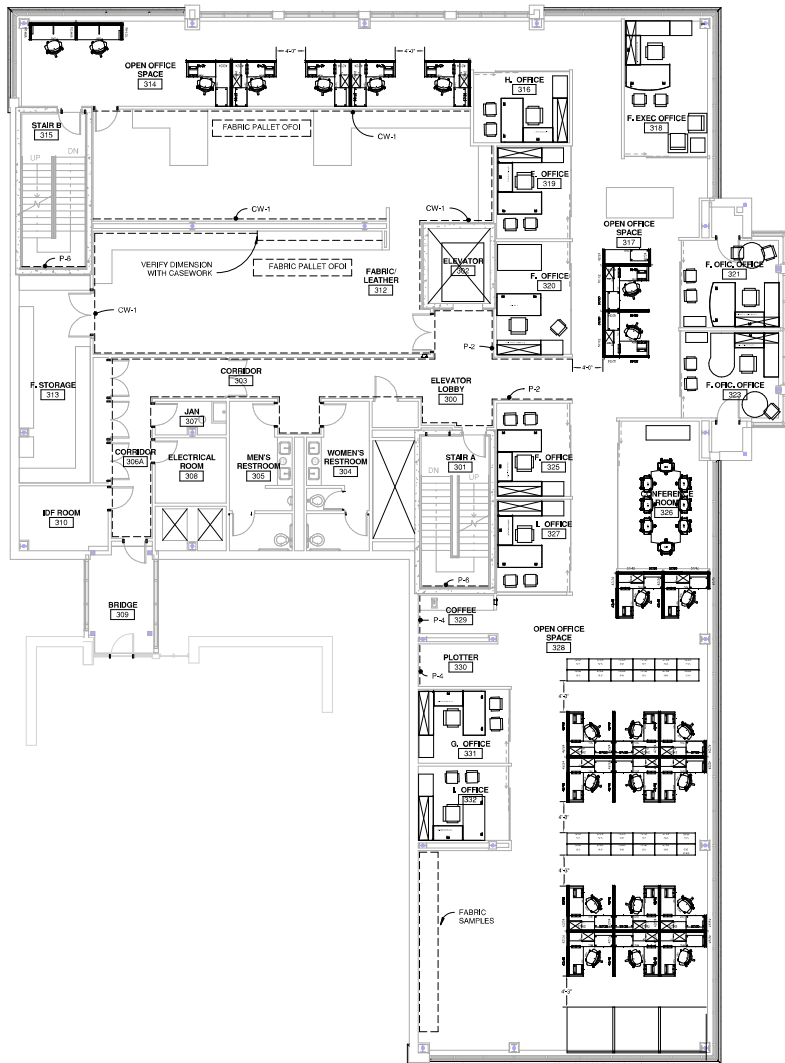
© COPYRIGHT 2011 ALL RIGHTS RESERVED
THESE DOCUMENTS HAVE BEEN PREPARED SPECIFICALLY FOR THIS PROJECT ONLY. NO PART OF THIS DOCUMENT MAY BE REPRODUCED OR DISTRIBUTED IN ANY FORM WITHOUT THE PERMISSION OF IIW, P.C. ALL INFORMATION IN THIS DOCUMENT IS CONSIDERED PROPERTY OF IIW, P.C.

Project Description:
LEVEL 2-FINISH AND FURNISHING PLANS

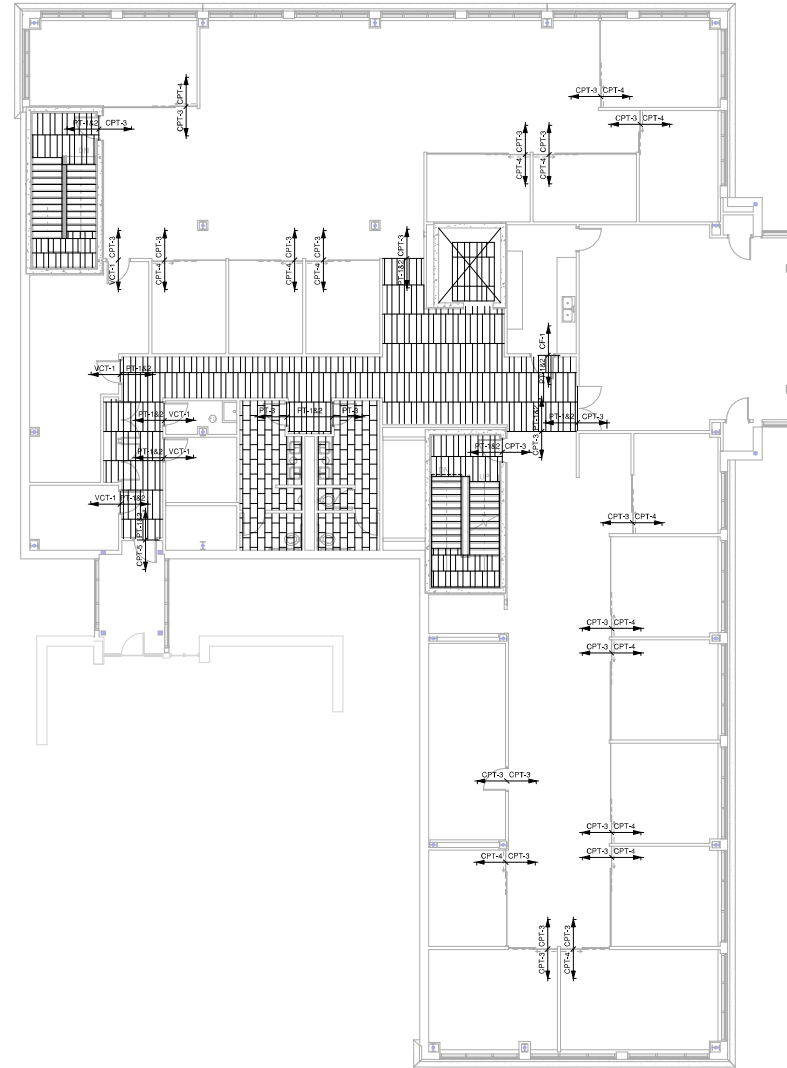
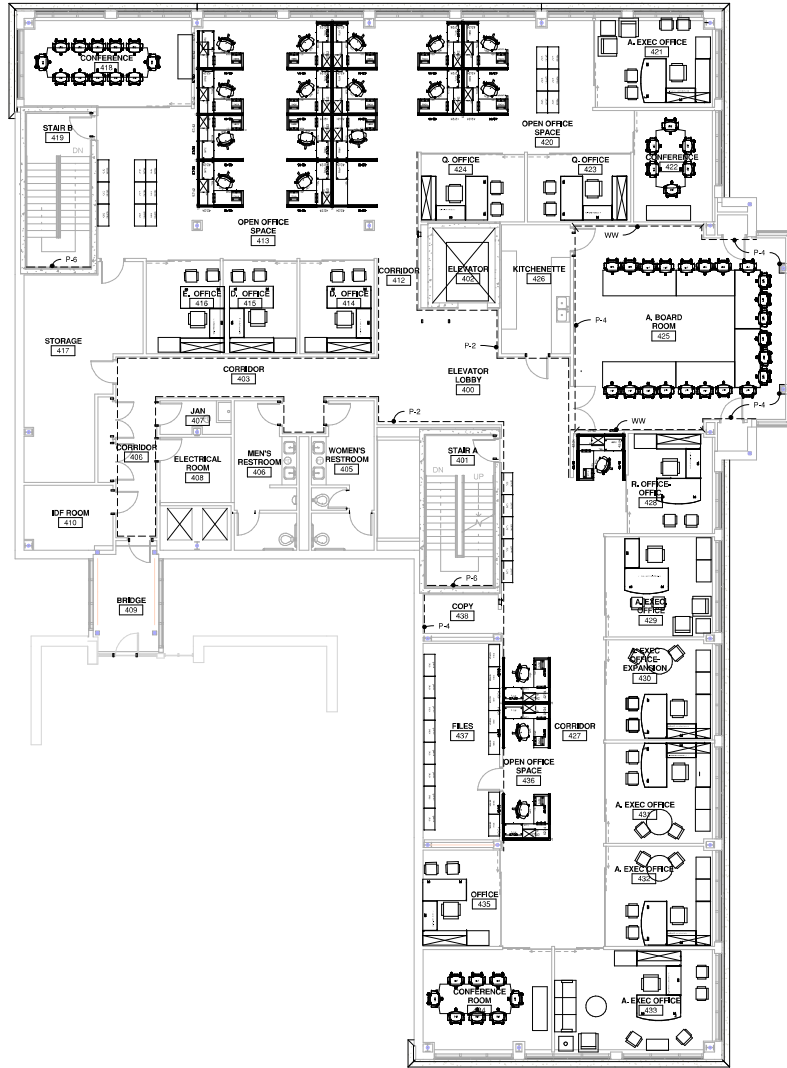
Flexsteel - Corporate Headquarters
5TH ST. AND BELL ST.
DUBUQUE, IA 52001

Rev	Description	Date	By
1	100% CONSTRUCTION DOCUMENTS	08/08/2011	

Sheet No: **FE1.2**
Project No: 10111-04



Rev	Description	Date	By
1	100% CONSTRUCTION DOCUMENTS	08/08/2011	
2			
3			
4			
5			
6			
7			
8			
9			
10			



Rev	Description	Date	By
1	100% CONSTRUCTION DOCUMENTS	08/08/2011	
2			
3			
4			
5			
6			
7			
8			
9			
10			

