

AVAILABLE For Lease

Lexington Business Park

1427
S. Lexington Street
Delano, CA 93215



Jonathon L. Ortiz

Associate

661 889 1096 ▪ jonathon@asuassociates.com
CA RE #02069258

Matthew E. Starr, SIOR, CCIM

Principal

661 616 3570 ▪ matthew@asuassociates.com
CA RE #01367855

11601 Bolthouse Drive Suite 110
Bakersfield, CA 93311

661 862 5454 main ▪ 661 862 5444 fax

The information contained herein may have been obtained from sources other than ASU Commercial. We have not verified such information and make no guarantees, warranties or representations about such information. It is your responsibility to independently confirm its accuracy and completeness prior to purchasing/leasing the property.

*Rendering Not Final, Subject To Change.



1427 S. Lexington Street

Property Highlights

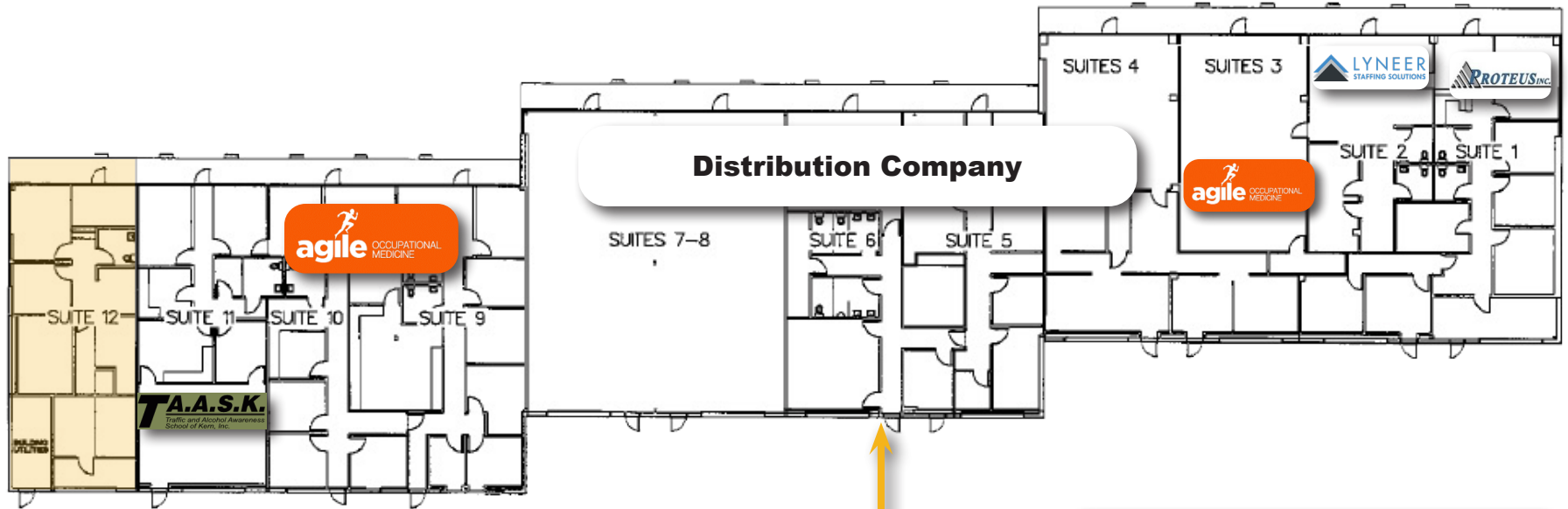
- Located just west of Highway 99 at Woollomes exit
- Available space in building A Suite-12
- Available space in building B Suite-1,2 &3
- Flexible offering with space from 1,325 to 4,472 SF available
- Flex space with office/warehouse
- Abundant on-site parking

AVAILABLE FOR LEASE

Lexington Business Park

Floor Plan - Building A

1427 S. Lexington Street
Delano, CA 93215



Building A - Area Summary

Suite 12	Vacant 1,325 SF
Suite 11	Task 1,513 SF
Suite 10	Agile 1,194 SF
Suite 9	Agile 1,746 SF
Suite 7-8	Distribution Company 2,981 SF
Suite 6	Distribution Company 1,695 SF
Suite 4-5	Distribution Company 1,274 SF
Suite 3	Agile 3,044 SF
Suite 2	Lyneer 950 SF
Suite 1	Proteus 1,944 SF



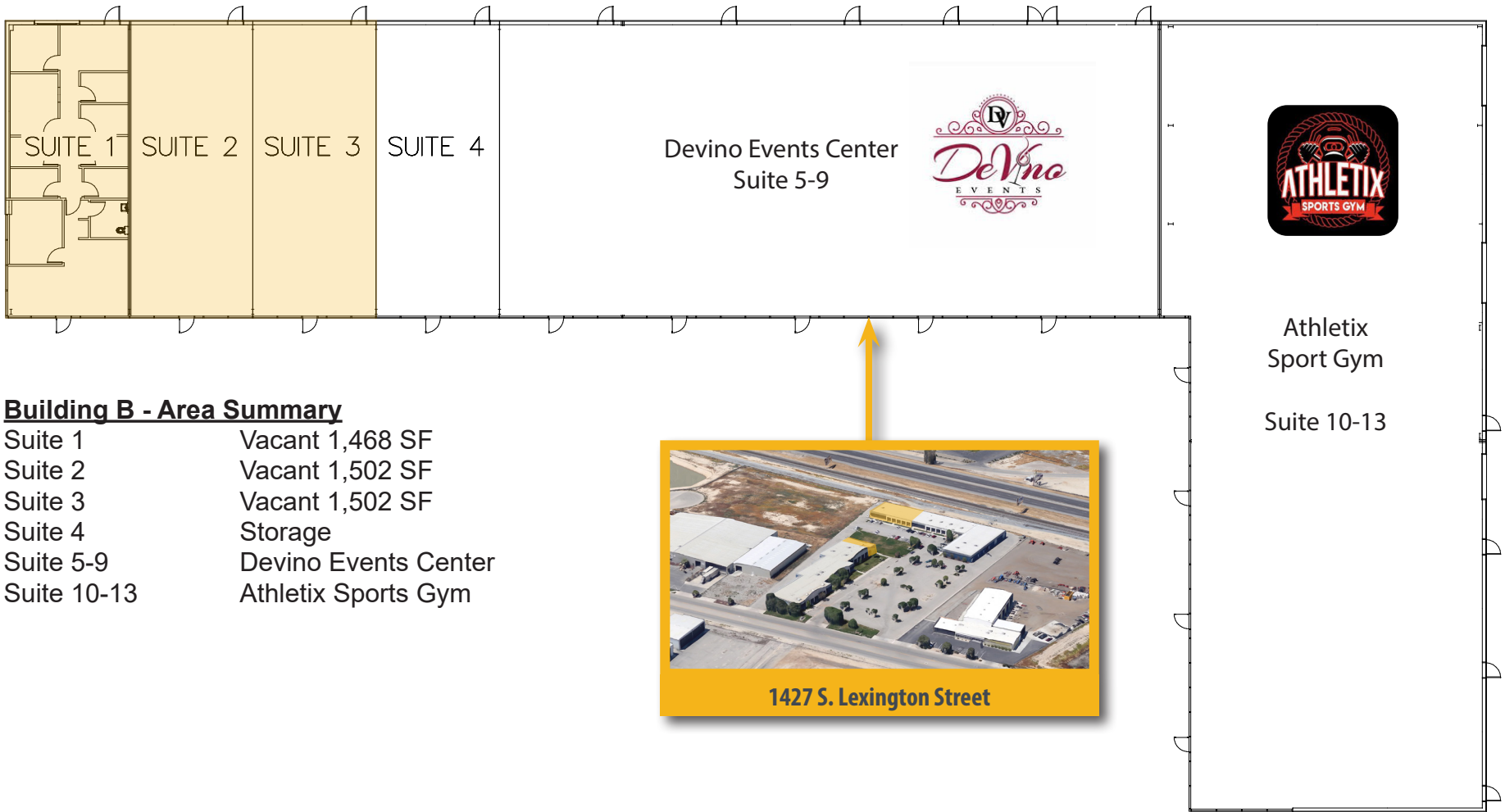
1427 S. Lexington Street

AVAILABLE FOR LEASE

Lexington Business Park

Floor Plan - Building B

1427 S. Lexington Street
Delano, CA 93215



Building B - Area Summary

Suite 1	Vacant 1,468 SF
Suite 2	Vacant 1,502 SF
Suite 3	Vacant 1,502 SF
Suite 4	Storage
Suite 5-9	Devino Events Center
Suite 10-13	Athletix Sports Gym



AVAILABLE FOR LEASE

Lexington Business Park

Site Map

1427 S. Lexington Street
Delano, CA 93215



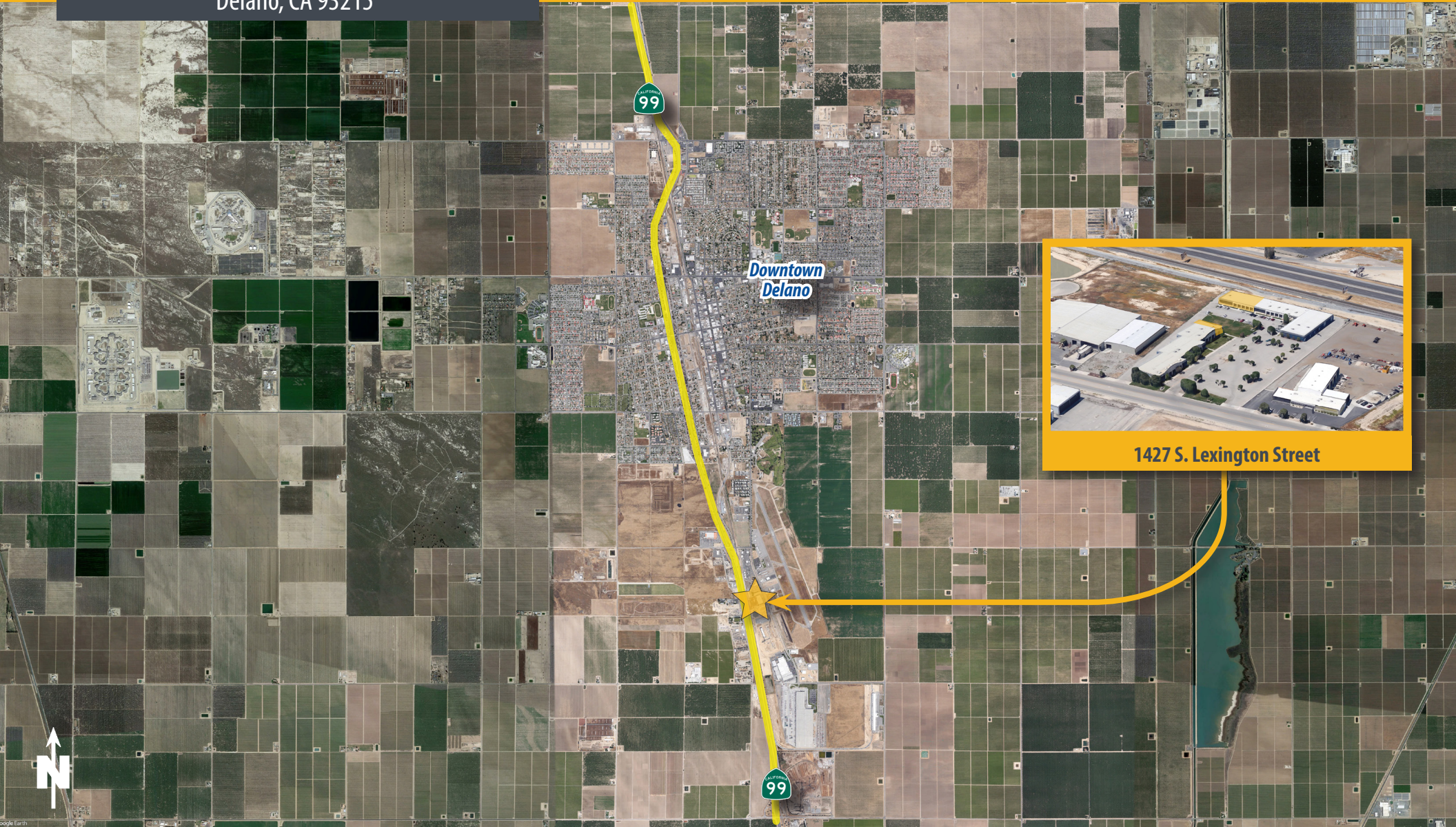
Jonathon L. Ortiz ■ Associate ■ 661 889 1096 ■ jonathon@asuassociates.com ■ CA RE #02069258
Matthew E. Starr, SIOR, CCIM ■ Principal ■ 661 616 3570 ■ matthew@asuassociates.com ■ CA RE #01367855
Bolthouse Drive Suite 110 ■ Bakersfield, CA 93311 ■ 661 862 5454 main ■ 661 862 5444 fax

AVAILABLE FOR LEASE

Lexington Business Park

Location Map

1427 S. Lexington Street
Delano, CA 93215



1427 S. Lexington Street



Jonathon L. Ortiz ▪ Associate ▪ 661 889 1096 ▪ jonathon@asuassociates.com ▪ CA RE #02069258
Matthew E. Starr, SIOR, CCIM ▪ Principal ▪ 661 616 3570 ▪ matthew@asuassociates.com ▪ CA RE #01367855
Bolthouse Drive Suite 110 ▪ Bakersfield, CA 93311 ▪ 661 862 5454 main ▪ 661 862 5444 fax