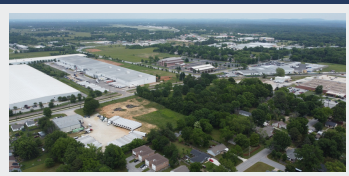




# INDUSTRIAL LAND FOR SALE



W EASY ST, ROGERS, AR 72756



[bennettcre.com](http://bennettcre.com)



**Palmer Hays**  
Industrial & Land Specialist  
479.466.8499  
[palmer@bennettcre.com](mailto:palmer@bennettcre.com)





## SITE HIGHLIGHTS

- + Currently zoned I-1
- + Flat & developable
- + Located within the north Rogers Opportunity Zone
- + Water & Sewer located on an adjacent parcel
- + A 2-minute drive from 71-B and an 8-minute drive from I-49

## PROPERTY DETAILS

Address: W Easy St, Rogers, AR 72756

---

Available: ±2.97 Acres

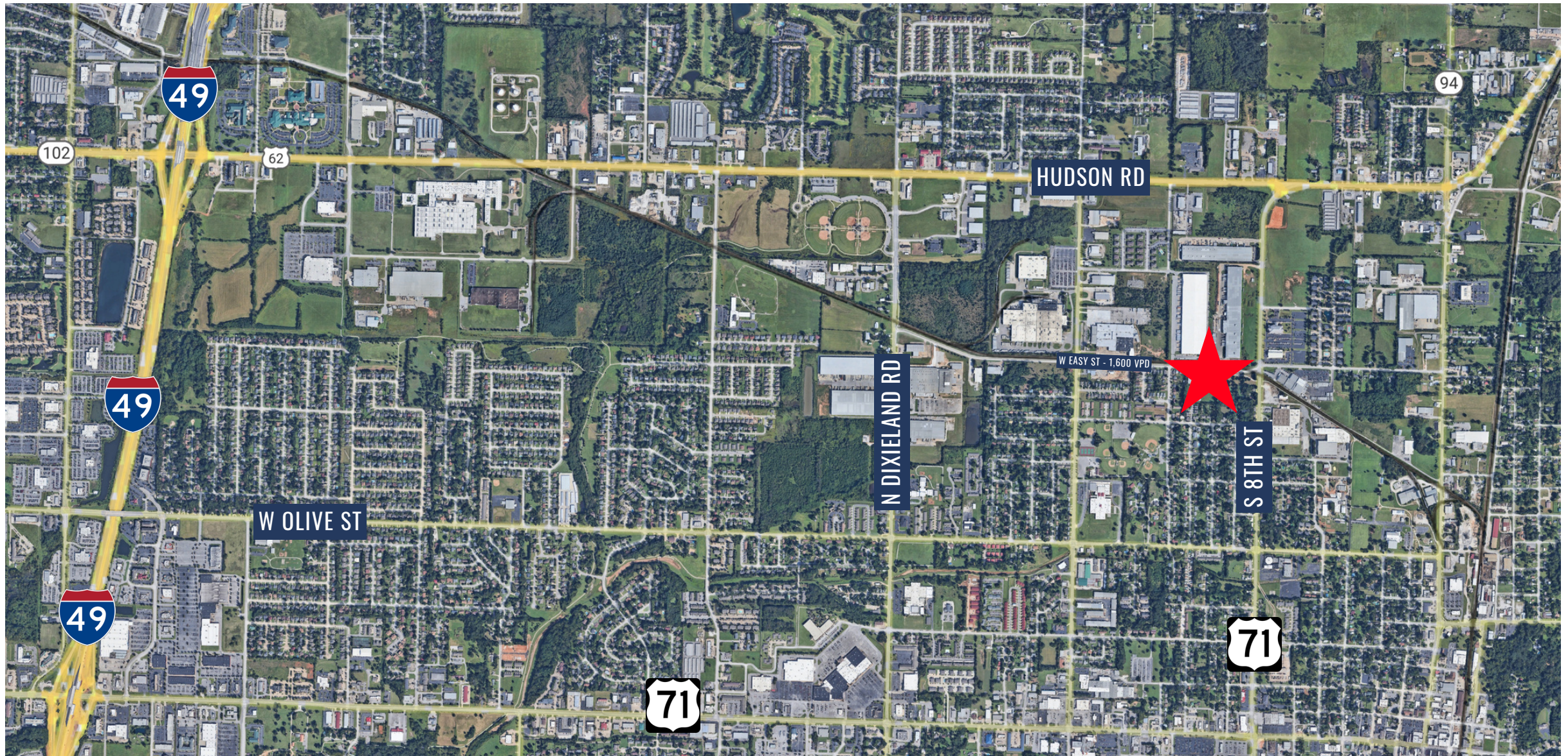
---

Parcel: 02-07042-001

**ASKING PRICE: \$549,450 (\$185,000 PER ACRE)**

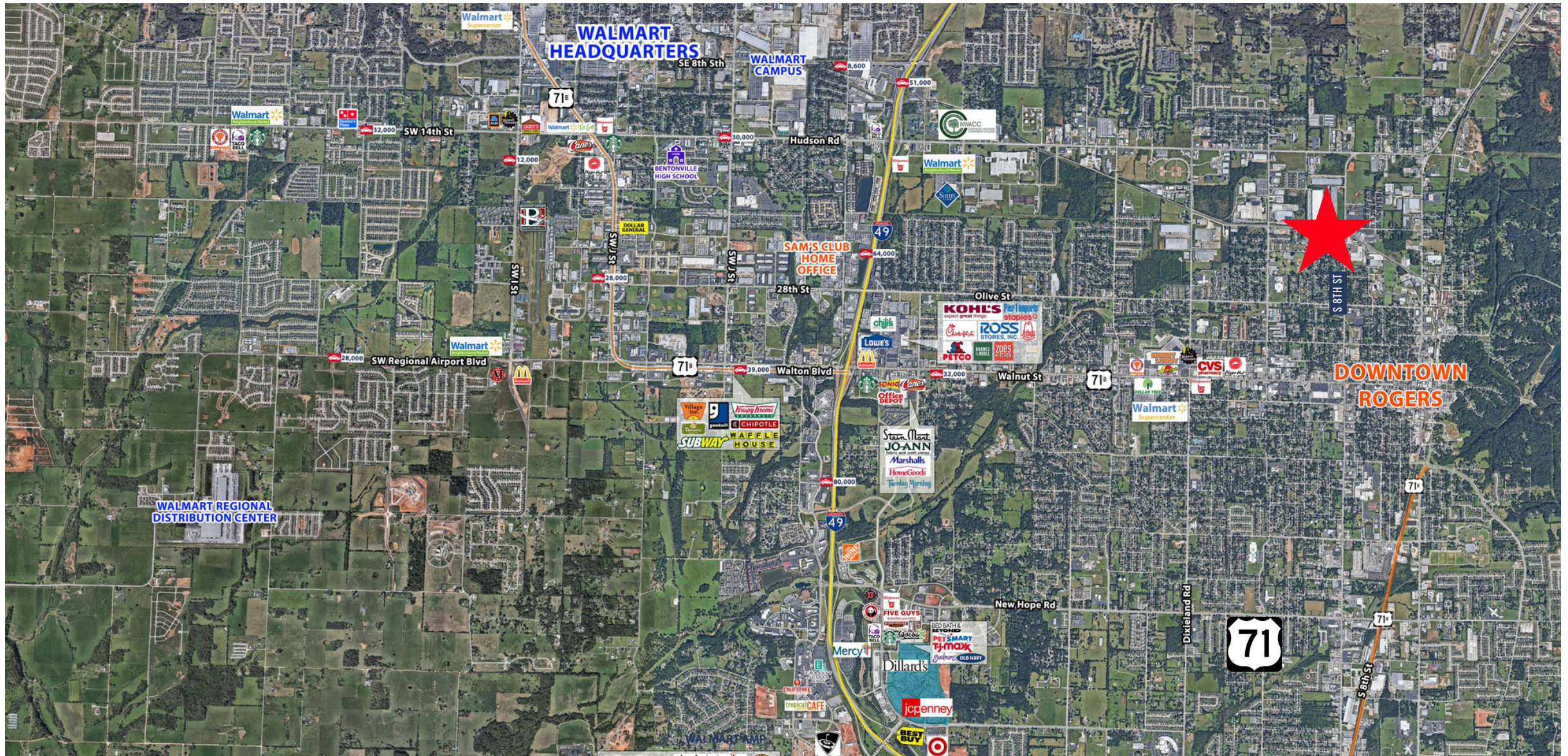


## AERIAL VIEW

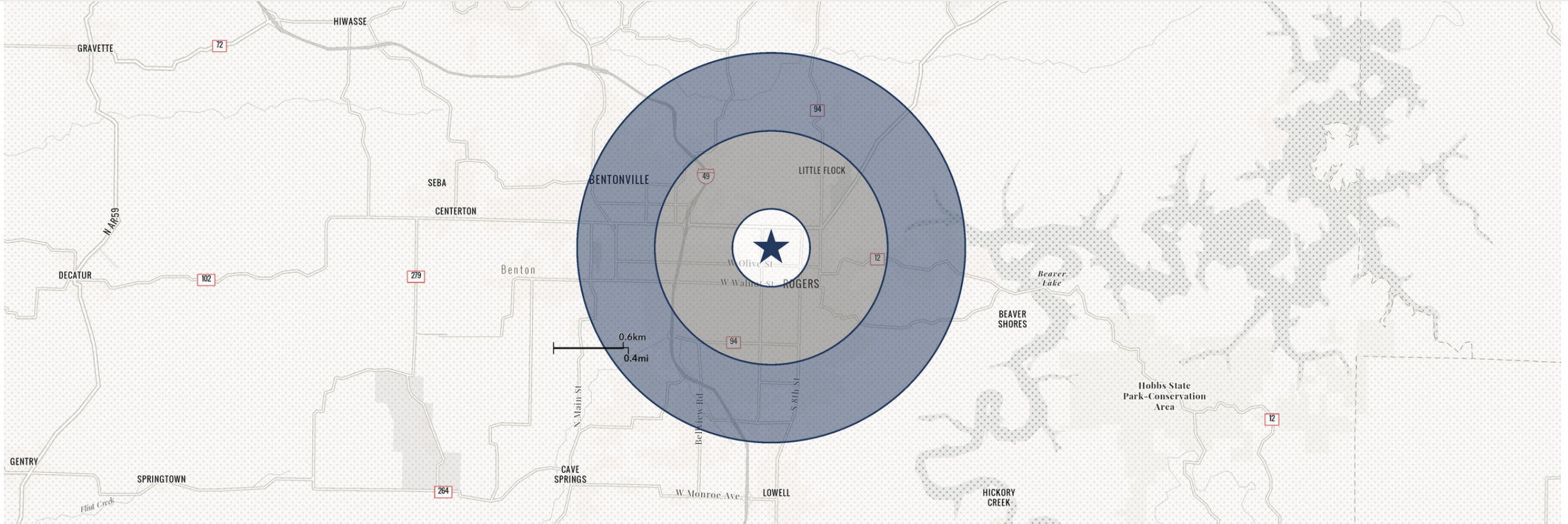




## AERIAL VIEW







## DEMOGRAPHICS

	1 MILE	3 MILES	5 MILES
Total Population	8,753	41,576	46,381
Median Age	30	35	34
Total Households	3,121	15,375	17,226
Total Employees	4,894	1,558	2,596
Average HH Income	\$50,364	\$84,569	\$105,816
Total Businesses	340	1,558	2,596