

Luminis Health Medical Portfolio

**Dominic
Digiovannantonio**
+1 443 452 1505
dom.digi@jll.com

**Rob
Freedman**
+1 410 952 9444
rob.freedman@jll.com



Sajak Pavilion

Anne Arundel Medical Center

2002 Medical Parkway
Annapolis, MD 21401

Rental rate: \$33 NNN

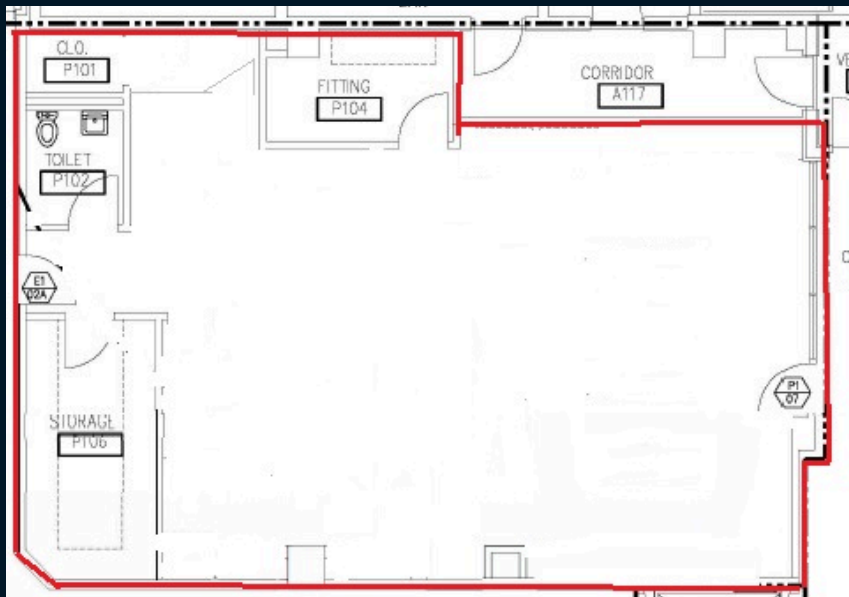
+ \$11 OPEX

+ utilities and cleaning

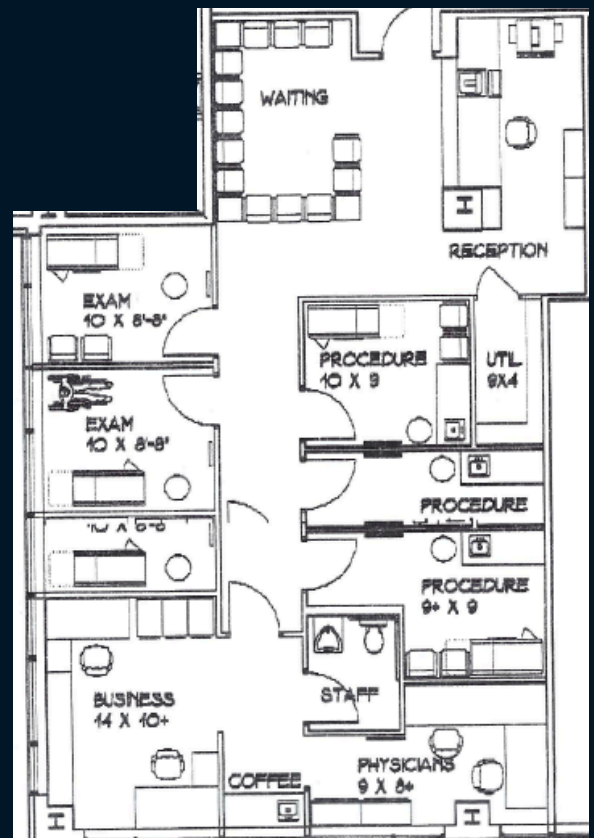


Availabilities

- **1st Floor - Suite 170 - 1,738 RSF**
- **6th floor- Suite 660 - 1,450 RSF**



Suite 170 - 1,738 RSF



Suite 660 - 1,450 RSF

Belcher Pavilion

Anne Arundel Medical Center

2000 Medical Parkway

Annapolis, MD 21401

Rental rate: \$33 NNN

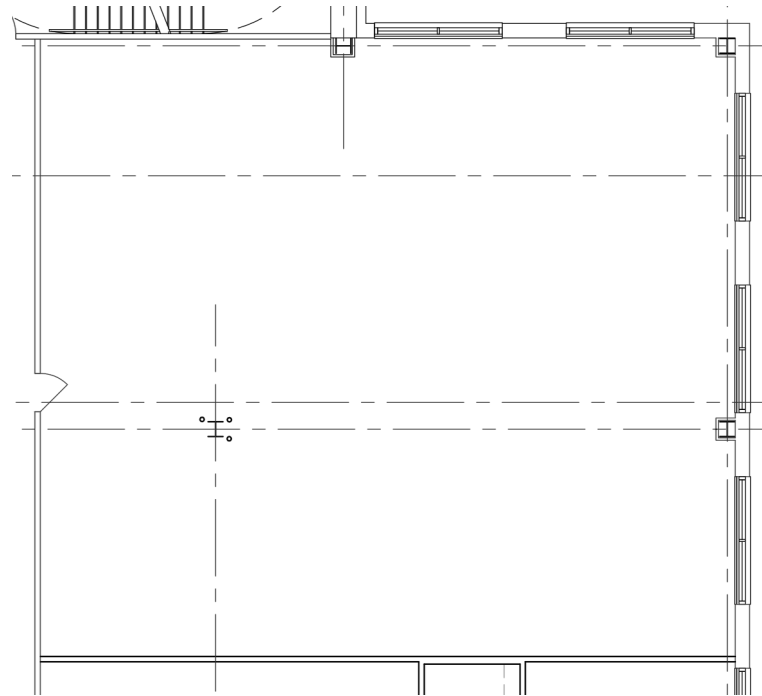
+ \$11 OPEX

+ utilities and cleaning



Availabilities

- Suite 601 – Shell Space - 2,625 RSF



Suite 601 - 2,625 RSF

Wayson Pavilion

Anne Arundel Medical Center

2003 Medical Parkway

Annapolis, MD 21401

Rental rate: \$33 NNN

+ \$11 OPEX

+ utilities and cleaning



Availabilities

- **4th Floor - 10,964 RSF**



Kent Island Pavilion

Anne Arundel Medical Center

1630 Main Street

Chester, MD 21619

Rental rate: \$33 NNN

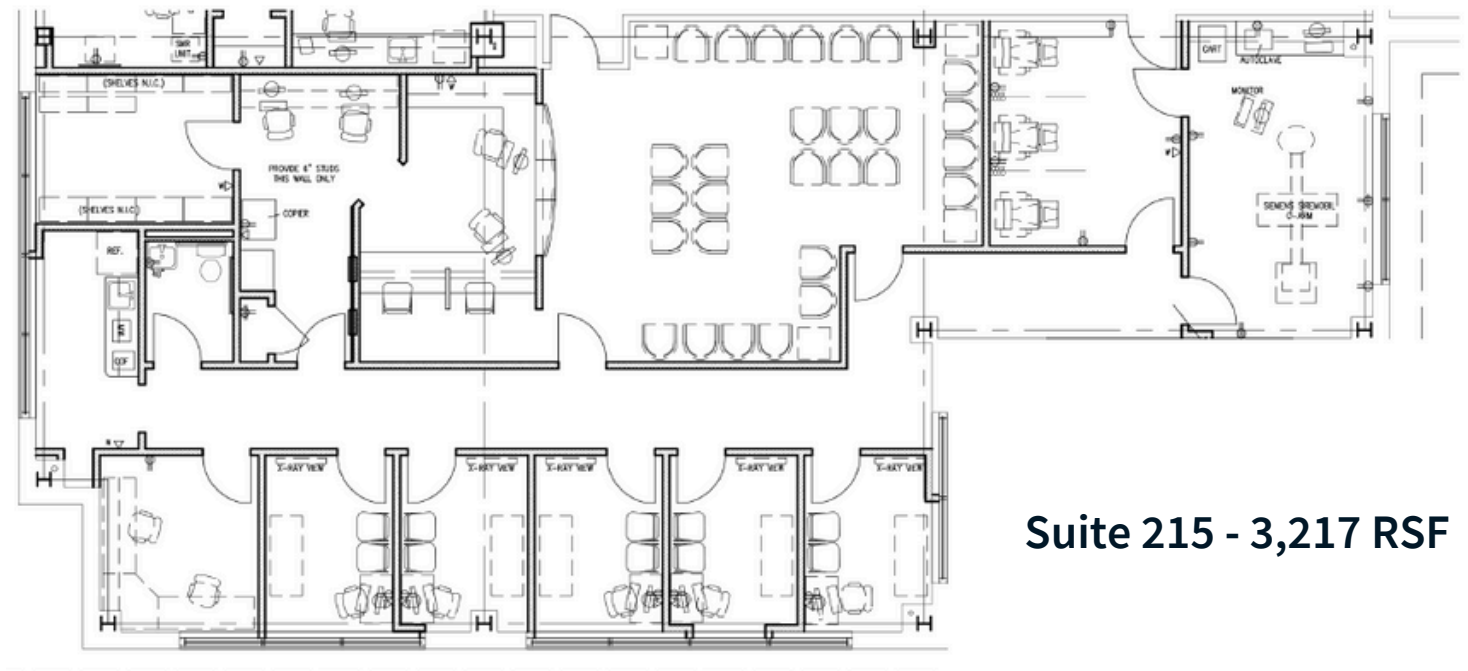
+ \$11 OPEX

+ utilities and cleaning



Availabilities

- 2nd Floor – Suite 215 - 3,217 RSF



Suite 215 - 3,217 RSF

Bowie Pavilion

Anne Arundel Medical Center

4175 Hanson Court

Bowie, MD 20716

Rental rate: \$33 NNN

+ \$11 OPEX

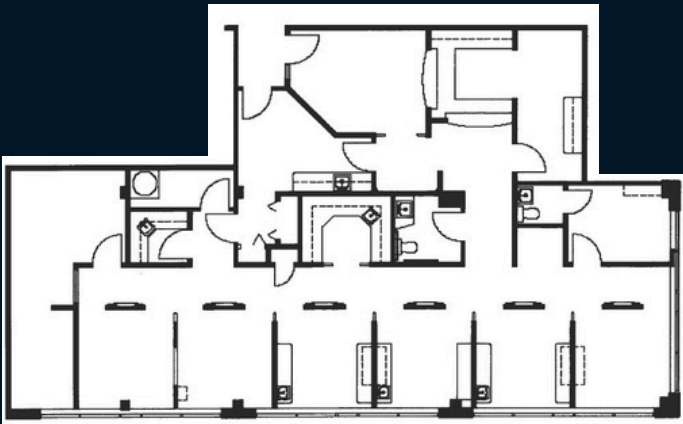
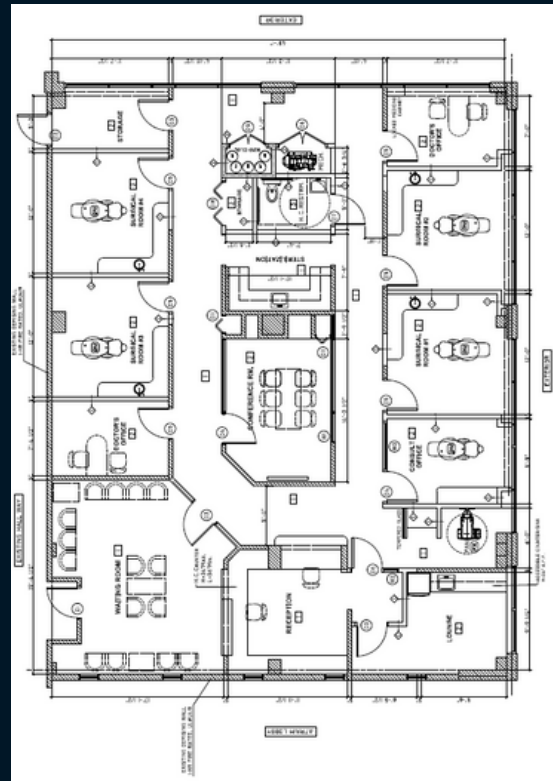
+ utilities and cleaning



Availabilities

- Suite 200- 2,842 RSF
- Suite 300 - 2,602 RSF

Suite 200- 2,842 SF



Suite 300 - 2,602 RSF



**Dominic
Digiovannantonio**
+1 443 452 1505
dom.digi@jll.com

**Rob
Freedman**
+1 410 952 9444
rob.freedman@jll.com