

Lake Geneva Center

785 Routes 5 & 20

Geneva, New York 14456



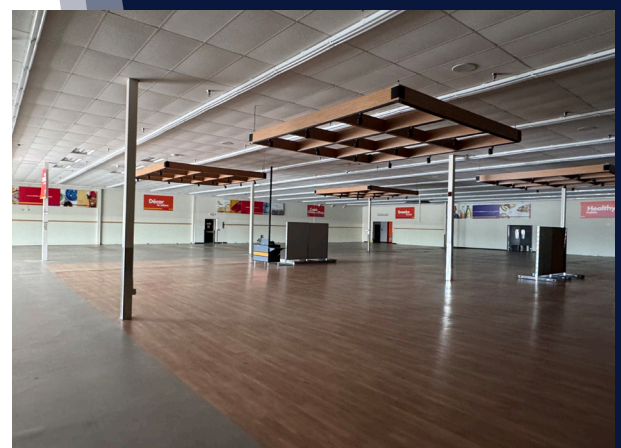
Highlights

- Ideal Retail Space
- Situated in the Trade Area's Primary Retail Corridor
- Offers Convenient Access from Routes 5 & 20, Pre Emption Rd. and Route 14A
- Signalized intersection on the SE Corner

Overview

This 205,114 sq. ft. shopping center in Geneva offers prime location with high visibility, located off Canandaigua Rd. (Routes 5 & 20) with 14,000 vehicles passing daily. The center is adjacent to major retailers like Tractor Supply, Walmart, Wegmans, and Harbor Freight. The center is down the street from Seneca Lake, providing excellent traffic potential.

| Demographics | 3 Mile | 5 Miles | 10 Miles |
|----------------|----------|----------|----------|
| Population | 15,558 | 19,209 | 40,590 |
| Households | 6,403 | 7,977 | 16,803 |
| Avg. HH Income | \$96,417 | \$99,277 | \$96,098 |



R. Scott Burdett CRRP

Associate Real Estate Broker

sburdett@flaummgt.com



585.546.4866 | 400 Andrews St Suite 500 Rochester, NY 14604 | www.flaummgt.com