



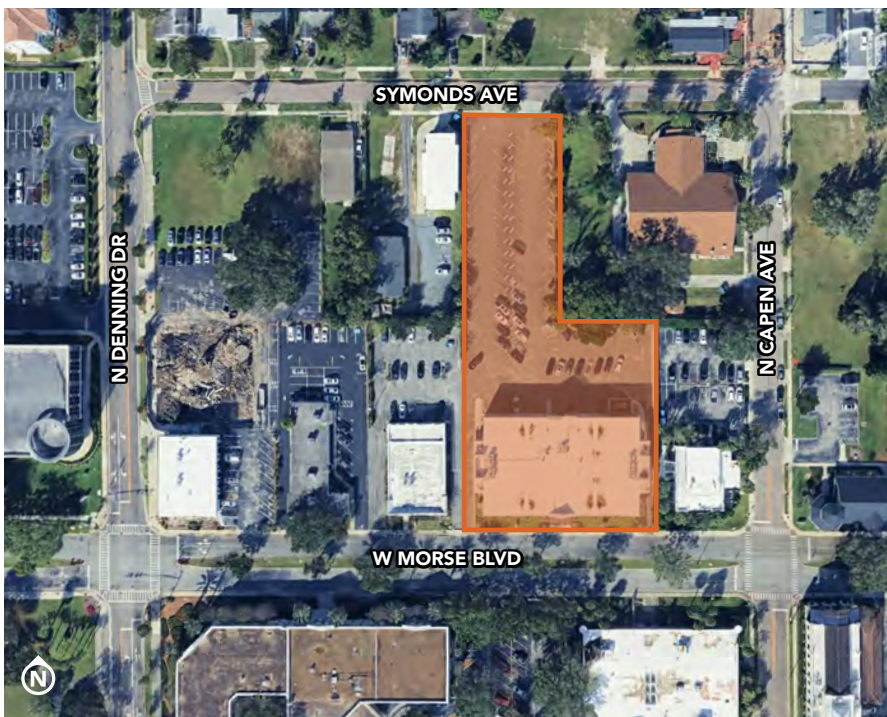
OFFICE CONDOS FOR SALE OR FOR LEASE

807 W Morse Blvd, Winter Park, FL 32789

Prominent two-story office building located in Winter Park's desirable downtown core

PROPERTY HIGHLIGHTS

- May be leased or purchased; together or separately
- Iconic presence inside the core of Winter Park's downtown area
- Excellent surface parking in a market with limited parking opportunities
- Well managed and maintained
- Well suited for the long-term investor seeking rent growth and a Winter Park address
- Potential for owner/user occupant



ASKING PRICE:

Contact broker for details



SQUARE FOOTAGE:

Unit 1: 7,011 ± RSF

Unit 2: 6,893 ± RSF

Unit 3: 8,653 ± RSF

Total Available: 22,557 ± RSF



PARKING:

100± surface spaces



ZONING:

Office-1



LOCATION:

Close proximity to abundant surrounding dining and retail

Convenient access to I-4



H A R B E R T
REALTY SERVICES

DAMIEN MADSEN

dmdasen@harbertrealty.com | 407.256.2844

JOSH SMITH

jsmith@harbertrealty.com | 407.377.4050

For More Information: HarbertRealty.com

400 S Park Ave, Suite 225, Winter Park, FL 32789

The information contained herein has been obtained from sources deemed reliable, however, HRS makes no guarantees, warranties or representation as to its completeness or accuracy thereof. The presentation of this property is submitted subject to errors, omissions, change of price or conditions, prior to sale or lease or withdrawal without notice.

Location Overview



H A R B E R T
REALTY SERVICES

DAMIEN MADSEN

dmadsen@harbertrealty.com | 407.256.2844

JOSH SMITH

jsmith@harbertrealty.com | 407.377.4050

For More Information: HarbertRealty.com

400 S Park Ave, Suite 225, Winter Park, FL 32789

OFFICE CONDOS FOR SALE OR FOR LEASE

807 W Morse Blvd, Winter Park, FL 32789

Floor Plan

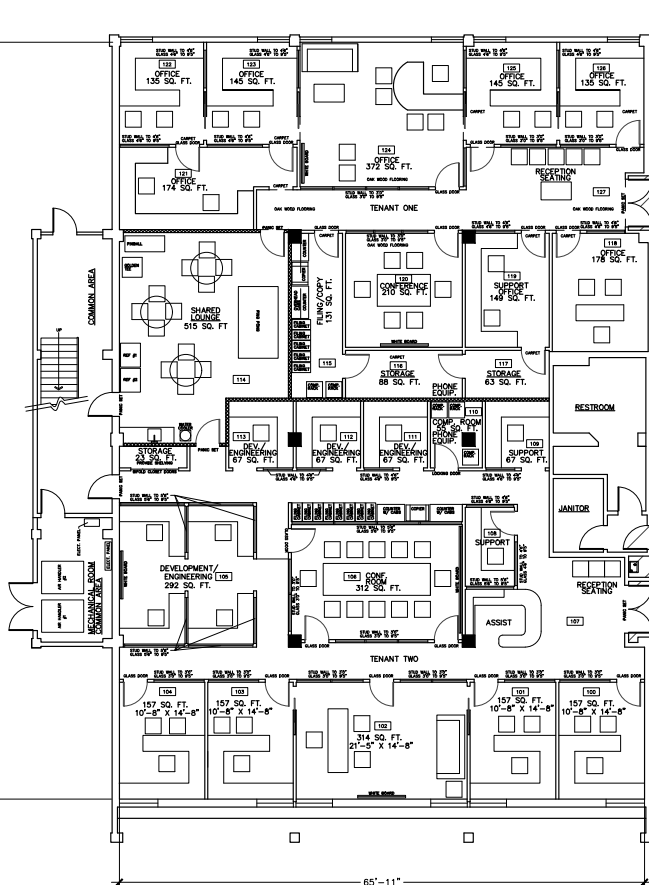
First Floor

*May be sold or leased; together or separately

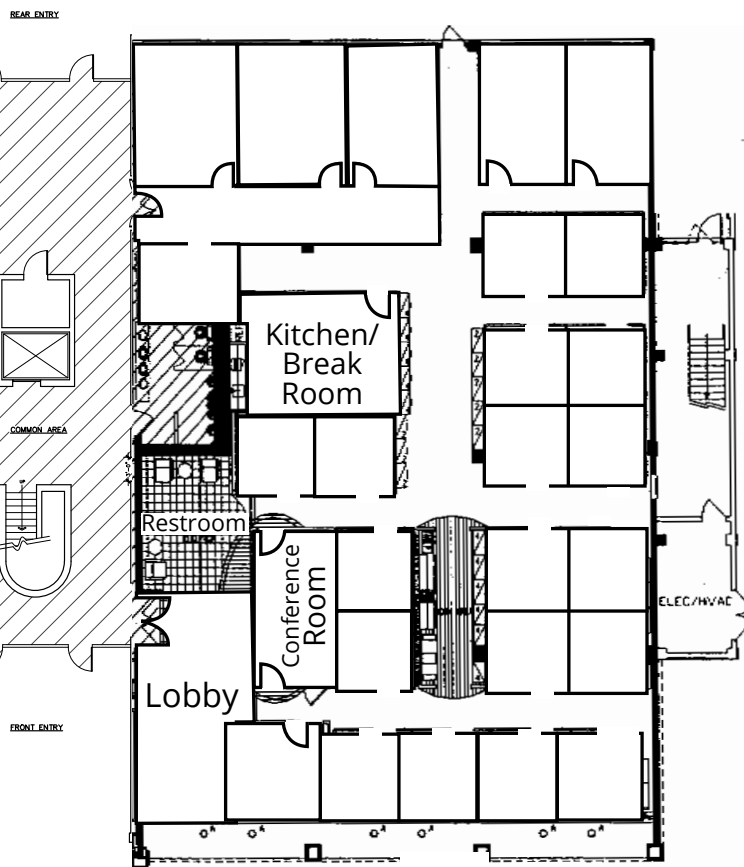
PARKING LOT

± 7,011 RSF

± 6,893 RSF



(Owner occupied, but willing to lease back or vacate)



(Vacant)



HARBERT
REALTY SERVICES

DAMIEN MADSEN

dmadsen@harbertrealty.com | 407.256.2844

JOSH SMITH

jsmith@harbertrealty.com | 407.377.4050

For More Information: HarbertRealty.com

400 S Park Ave, Suite 225, Winter Park, FL 32789

OFFICE CONDOS FOR SALE OR FOR LEASE

807 W Morse Blvd, Winter Park, FL 32789

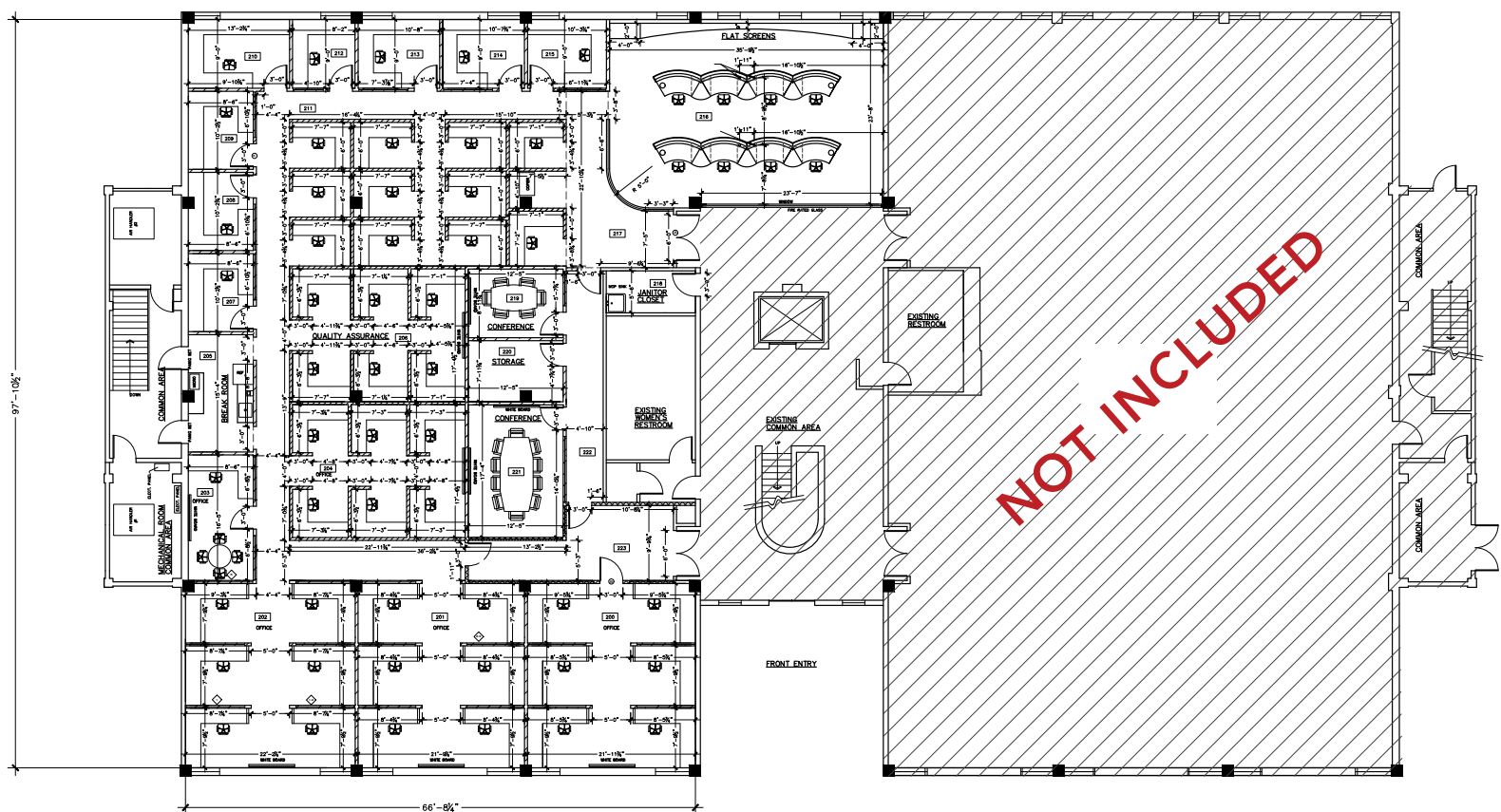
Floor Plan

Second Floor

*May be sold or leased; together or separately

PARKING LOT

± 8,653 RSF



(Vacant)



HARBERT
REALTY SERVICES

DAMIEN MADSEN

dmadsen@harbertrealty.com | 407.256.2844

JOSH SMITH

jsmith@harbertrealty.com | 407.377.4050

For More Information: HarbertRealty.com

400 S Park Ave, Suite 225, Winter Park, FL 32789