

2000 5TH STREET
2002 5TH STREET
2004 5TH STREET
2001 4TH STREET
NISKU, AB

NISKU CAMPUS

Colliers

FOR SALE // REDUCED PRICE

*High Exposure Campus Opportunity in Nisku,
Fronting Highway 625*



EVELYN STOLK, CCIM

Senior Vice President

+1 780 690 3224

evelyn.stolk@colliers.com

ROD CONNOP

Executive Vice President

+1 780 940 9159

rod.connop@colliers.com

CHANCE THOMAS

Associate Vice President

+1 780 246 5354

chance.thomas@colliers.com

OPPORTUNITY

Colliers is pleased to re-introduce the Nisku Campus in Leduc County for purchase.

- > Two legal parcels consisting of two office buildings, shop facilities, plus yard
- > Each parcel has Highway 625 frontage offering excellent exposure
- > Location benefits from low tax rate offered in Leduc County
- > Immediate access to Edmonton International Airport (EIA)
- > Excellent proximity to major transportation routes, including Highway 625, QE-II, Nisku Spine Road, Anthony Henday Ring Road, and high/heavy load transportation corridor



EAST PARCEL



OFFICE BUILDING / WEST



OFFICE BUILDING / EAST



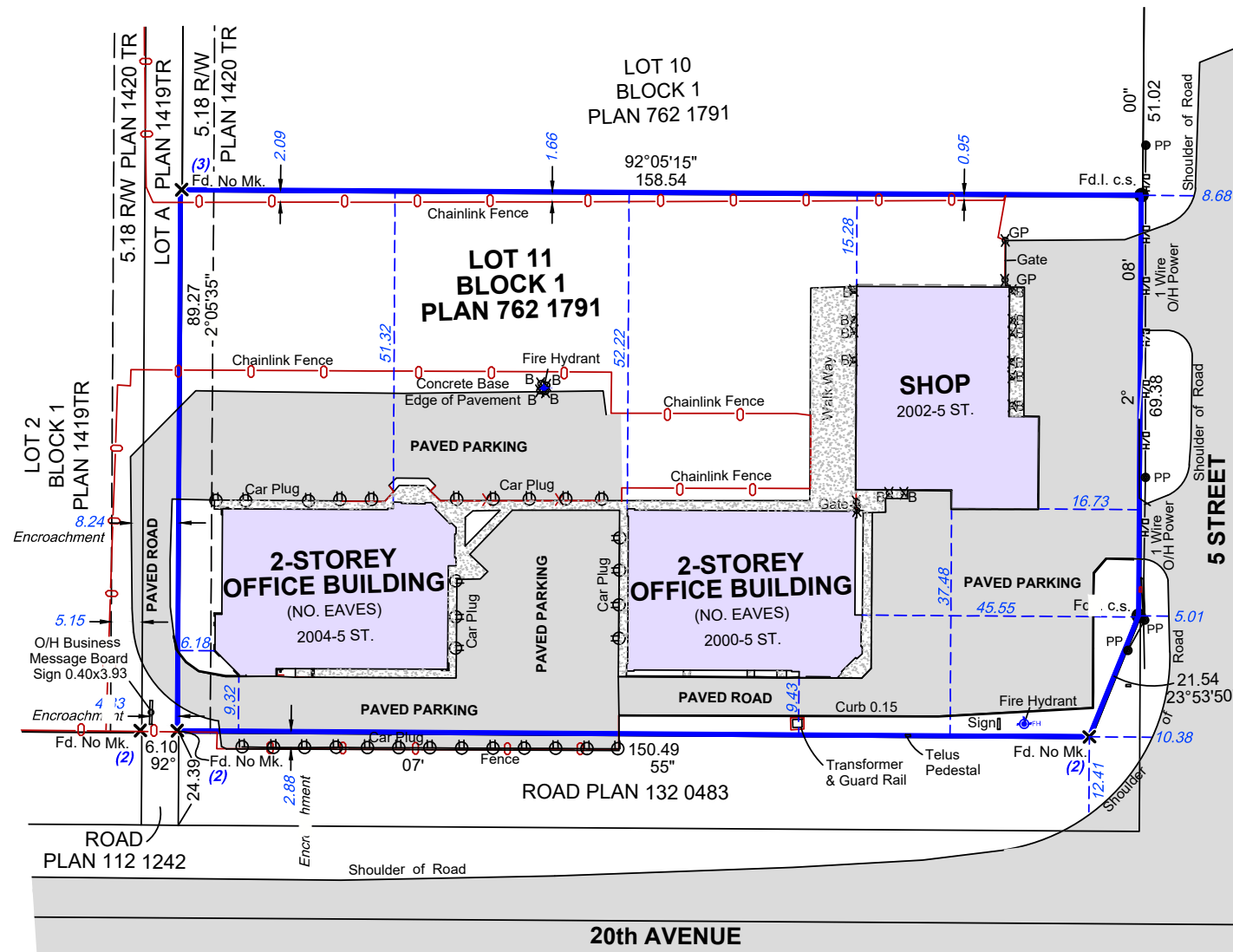
SHOP FACILITY

CAMPUS:	OFFICE BUILDING / WEST	OFFICE BUILDING / EAST	SHOP FACILITY
ADDRESS	2004 5 th Street, Nisku	2000 5 th Street, Nisku	2002 5 th Street, Nisku
LEGAL DESCRIPTION	Plan 7621792, Block 1, Lot 11		
ZONING	IND - Industrial		
LAND SIZE	3.46 Acres		
YEAR BUILT	2012	2002	1978 [±]
BUILDING SIZE	20,700 SF	20,700 SF	10,250 SF
POWER	800 Amp, 120/208 Volt**	800 Amp, 120/208 Volt**	400 Amp, 600 Volt**
HVAC	> Heating: Boiler > Cooling: Roof Mounted RTU's	> HVAC: Roof Top Mounted > Heating/Cooling: RTU's	> Office: Forced Air > Shop: Unit Heaters
CRANES	N/A	N/A	(1) 10-ton crane, (1) 7.5-ton crane
LOADING	N/A	N/A	6 Grade doors 16'x18' (3 drive-thru bays)
PARKING	130 Stalls (3+ Stalls per 1000 SF)		10 Stalls
SERVICES	Full municipal services		
FEATURES	> Institutional class construction > Mix of private offices / bullpen space > Multiple boardrooms / conference rooms > Fibre optics > Microphone system for video-conferencing > Office furnishings negotiable		> One drive-thru wash bay > Secure gravel/fenced yard > Drive thru bays > Paved employee parking
PROPERTY TAXES	\$102,731.54 (2024)		
AVAILABILITY	Immediately	Immediately	90 days notice

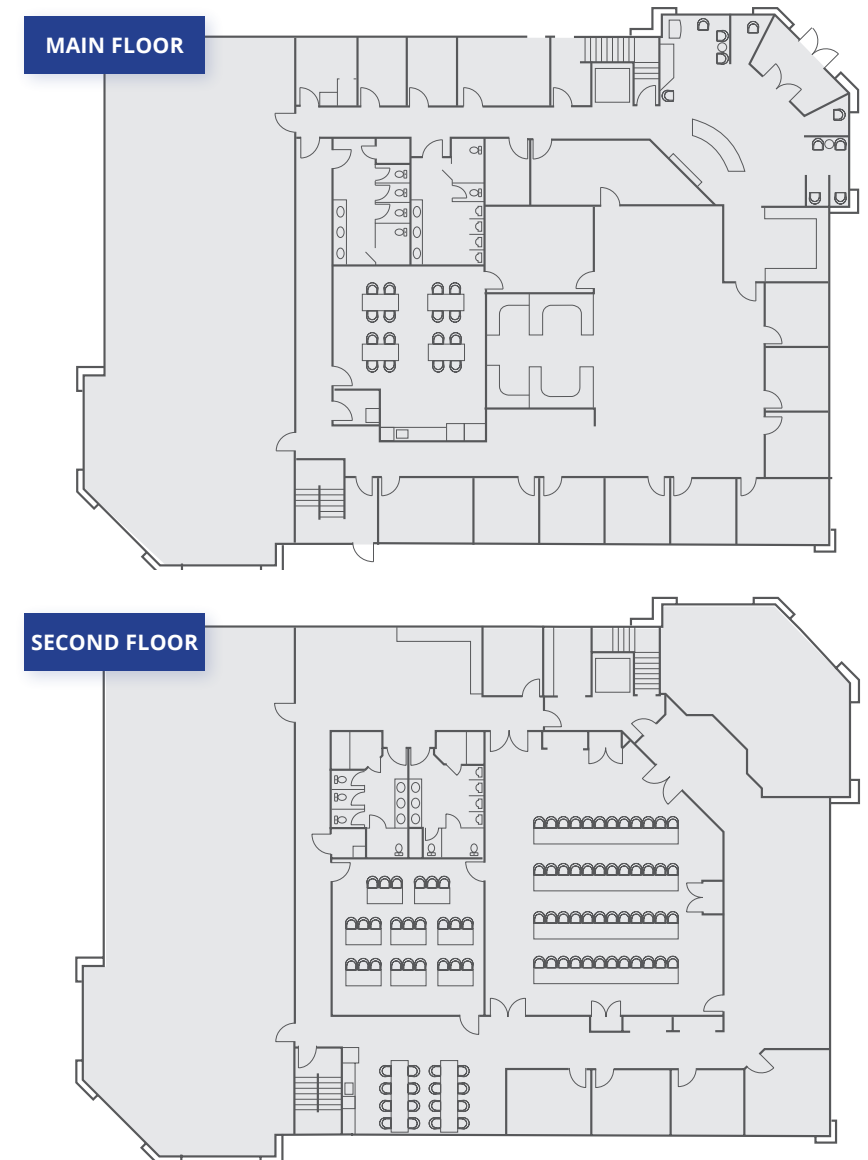
East & West Parcel / Reduced Price: \$9 Million

**to be verified by tenant/purchaser

SITE PLAN (RPR)



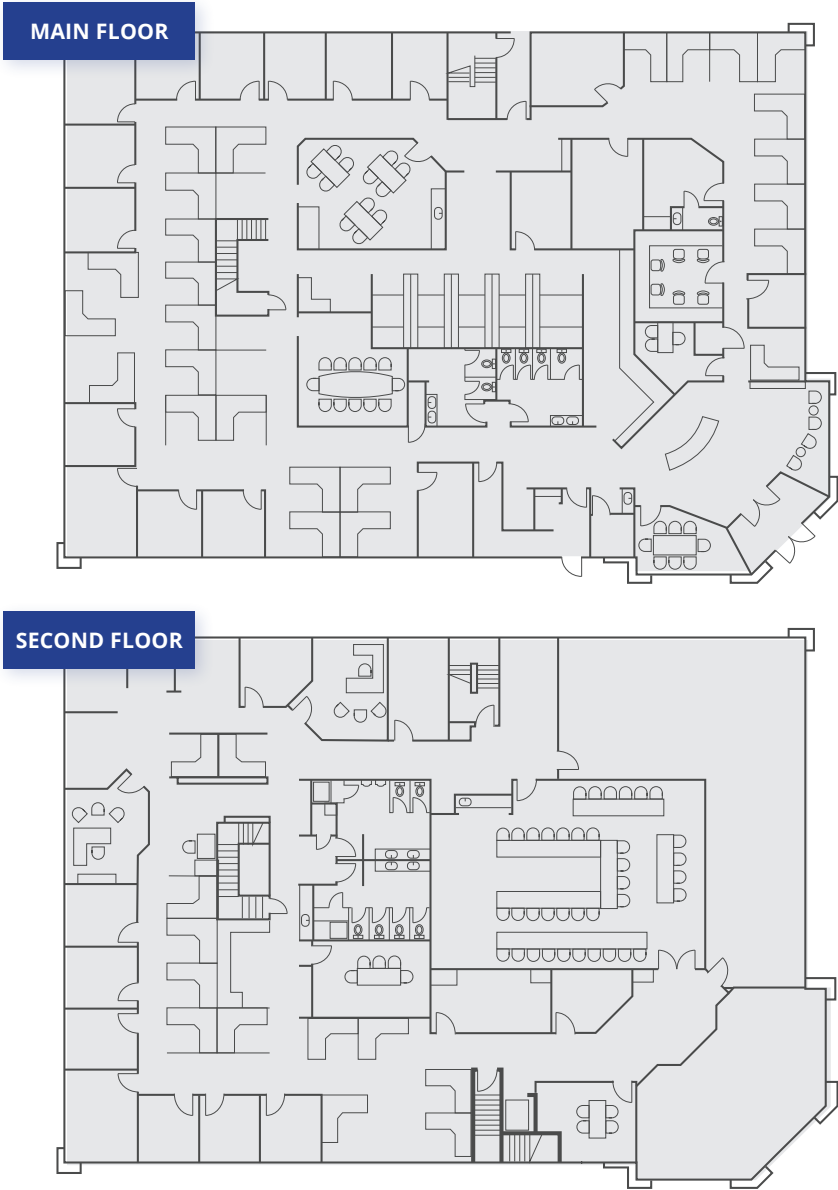
WEST OFFICE BUILDING | 2004 5 Street



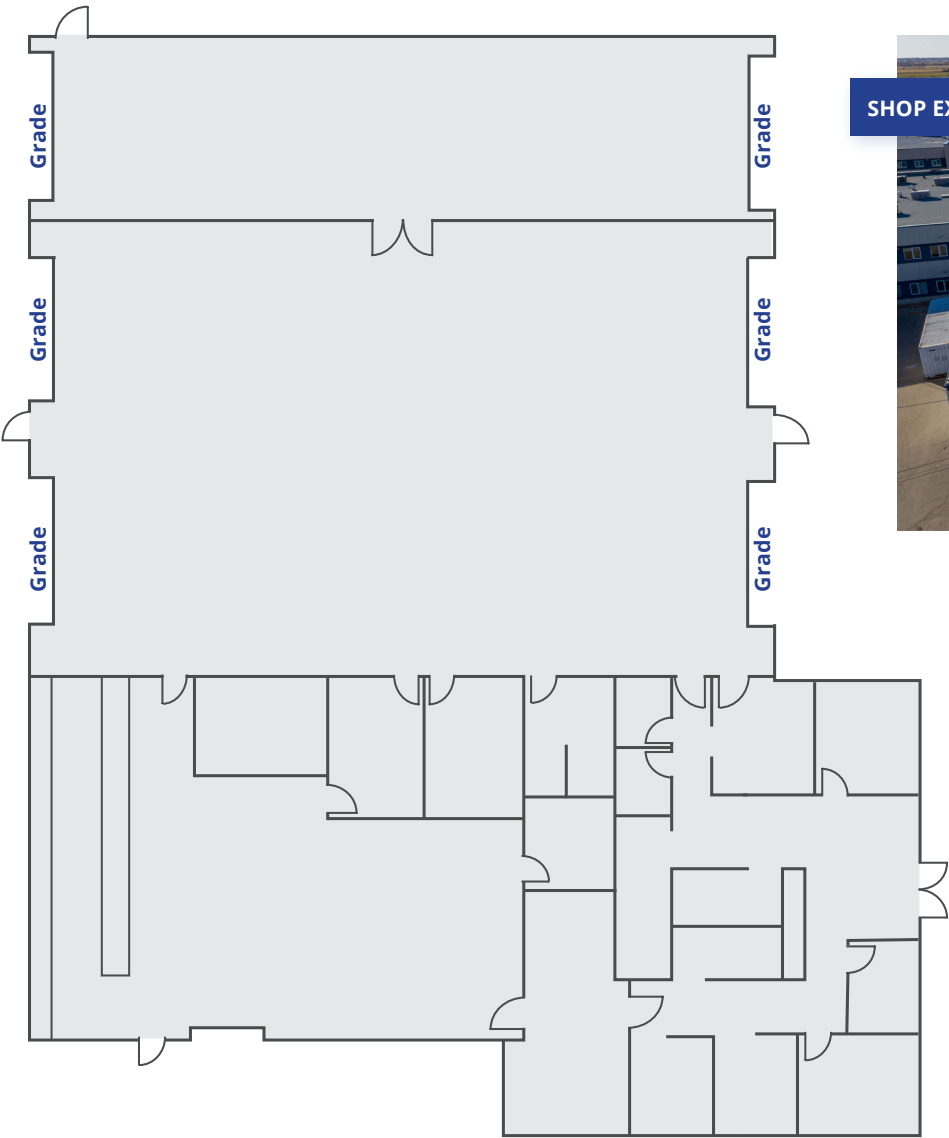
Floor plans are for illustration purposes only. Actual floor plan scale and layout may vary.

EAST PARCEL // PLANS .. CONTINUED

EAST OFFICE BUILDING | 2000 5 Street



SHOP FACILITY | 2002 5 Street



Floor plans are for illustration purposes only. Actual floor plan scale and layout may vary.

WEST PARCEL

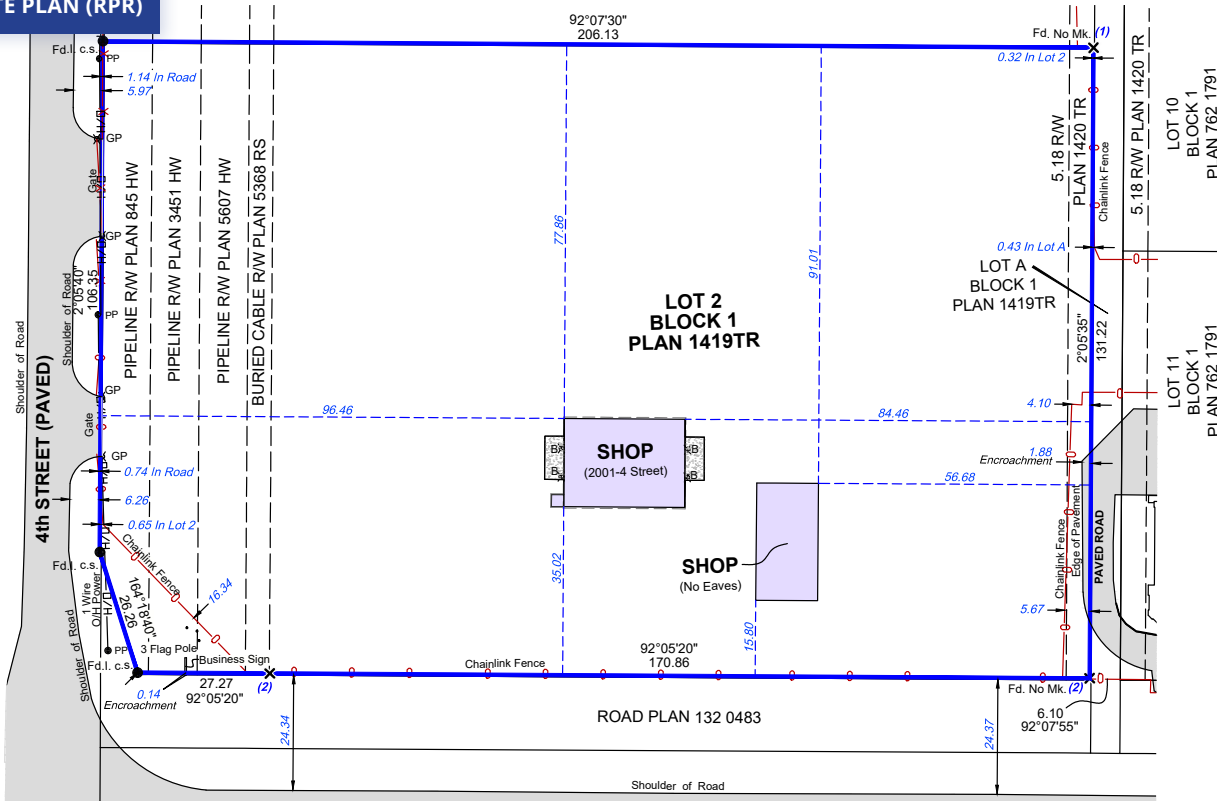


FAB SHOP



WEST PARCEL BUILDINGS

SITE PLAN (RPR)



ADDRESS	2001 4 Street, Nisku
LEGAL DESCRIPTION	Plan 1419TR, Block 1, Lot 2
YEAR BUILT	1974 [±]
ZONING	IND - Industrial
BUILDING SIZE	5,000 SF
LAND SIZE	6.68 Acres
POWER	600 Amp, 120/208 Volt <i>(to be verified by purchaser)</i>
HVAC	Unit Heaters
CRANES	(1) 1.6 Ton Overhead crane
LOADING	(2) 18' x 20' Grade Doors (drive-thru)
PARKING	Ample
FEATURES	> Municipal water & sanitary stubbed to lot > Compacted gravel yard > Two points of access/egress on 4 th Street
PROPERTY TAXES	\$39,983.39 (2024)
AVAILABILITY	90 days notice

***East & West Parcel:
Reduced Price: \$9 Million***

LOCATION SUMMARY

- > Located in the Nisku Business park, the Nisku Campus provides excellent exposure along Highway 625 on both East and West parcels
- > This location provides simple and quick access to major arterial roads and is only a couple of minutes away from the Queen Elizabeth II Highway.
- > Join neighboring businesses such as PCL Industrial Constructors Inc., Moore Pipe, Dynaflex Pipe Technologies and Gemini Machine Works, and others

LOCATION	DRIVE TIME
QUEEN ELIZABETH II HIGHWAY	2 Minutes
EDMONTON INTERNATIONAL AIRPORT	6 Minutes
LEDUC	7 Minutes
EDMONTON	9 Minutes
RED DEER	1 Hour 17 Minutes
CALGARY	2 Hours 17 Minutes

NEARBY AMENITIES

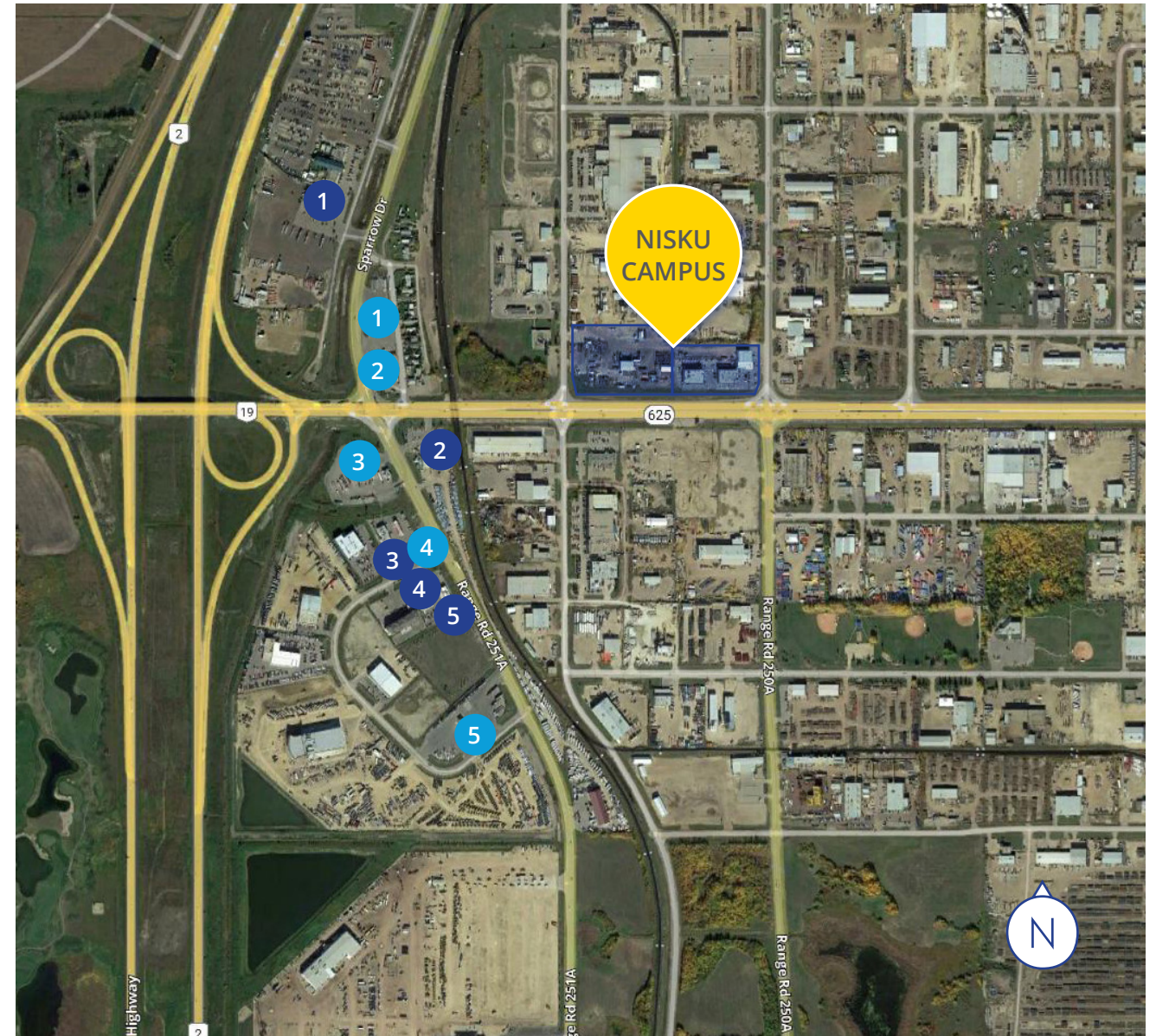
Gas Stations:

- 1 Flying J Cardlock
- 2 Shell
- 3 Petro-Pass Truck Stop
- 4 Petro-Canada
- 5 Co-op Cardlock

Food & Drink:

- 1 Blackjacks Roadhouse
- 2 McDonald's
- 3 A&W
- 4 Quiznos
- 5 Tim Horton's

NEARBY AMENITIES MAP



OPPORTUNITY PROCESS

The Nisku Campus is available for sale and all offers will be dealt with on a first come / first served basis. Please contact the undersigned at Colliers if you have any interest in a tour or for additional details of this exciting offering. Vacant possession can be provided immediately for the Office buildings; 90 days notice will be required for the shop facility on the east parcel & west parcel.

CONTACT US FOR MORE INFORMATION:

EVELYN STOLK, CCIM

Senior Vice President

C: +1 780 690 3224

O: +1 780 969 3002

evelyn.stolk@colliers.com

ROD CONNOP

Executive Vice President

C: +1 780 940 9159

O: +1 780 969 2994

rod.connop@colliers.com

CHANCE THOMAS

Associate Vice President

C: +1 780 246 5354

O: +1 780 969 3035

chance.thomas@colliers.com



Colliers Macaulay Nicolls Inc.
1700, 10104 103 Avenue, Edmonton, AB T5J 0H8
P: +1 780 420 1585
collierscanada.com

This document has been prepared by Colliers for advertising and general information only. Colliers makes no guarantees, representations or warranties of any kind, expressed or implied, regarding the information including, but not limited to, warranties of content, accuracy and reliability. Any interested party should undertake their own inquiries as to the accuracy of the information. Colliers excludes unequivocally all inferred or implied terms, conditions and warranties arising out of this document and excludes all liability for loss and damages arising there from. This publication is the copyrighted property of Colliers and /or its licensor(s). © 2025. All rights reserved. This communication is not intended to cause or induce breach of an existing listing agreement. Colliers Macaulay Nicolls Inc. 11.21.25

2000 5TH STREET
2002 5TH STREET
2004 5TH STREET
2001 4TH STREET
NISKU, AB

NISKU
CAMPUS