

OLD US-23 HARTLAND TWP., MICHIGAN

LAND FOR SALE
158.85 Acres Available



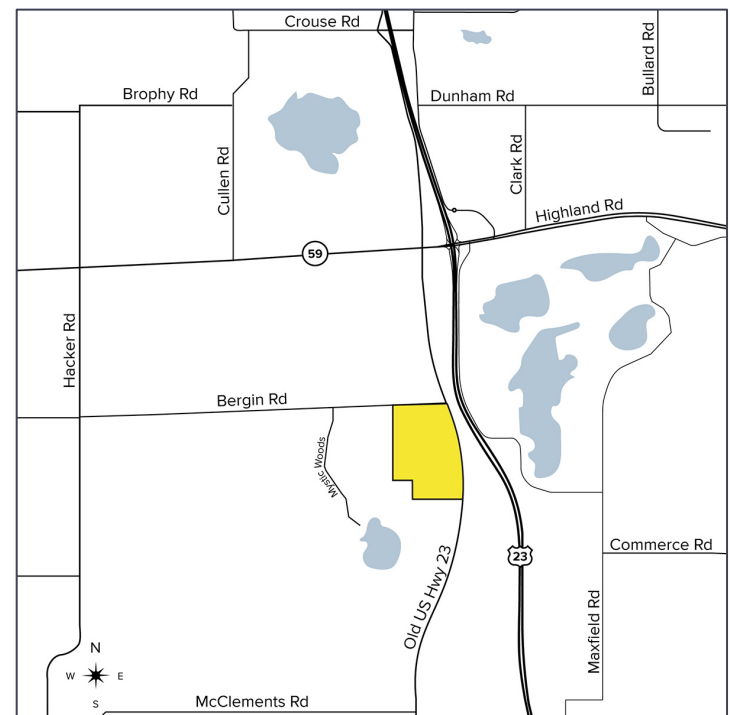
**SIGNATURE
ASSOCIATES**
KNOW SIGNATURE | KNOW RESULTS

GREAT LOCATION



PROPERTY FEATURES

- 158.85 acres
- 60 acres zoned light industrial
- 42 acres zoned residential
- Great location just south of US-23 and M-59 Interchange
- Contact broker for pricing info
- Seller will consider seller financing or contributing land to a development



For more information, please contact:

JEFF LEMANSKI
(248) 359 0641
jlemanski@signatureassociates.com

STEVE GORDON
(248) 948 0101
sgordon@signatureassociates.com

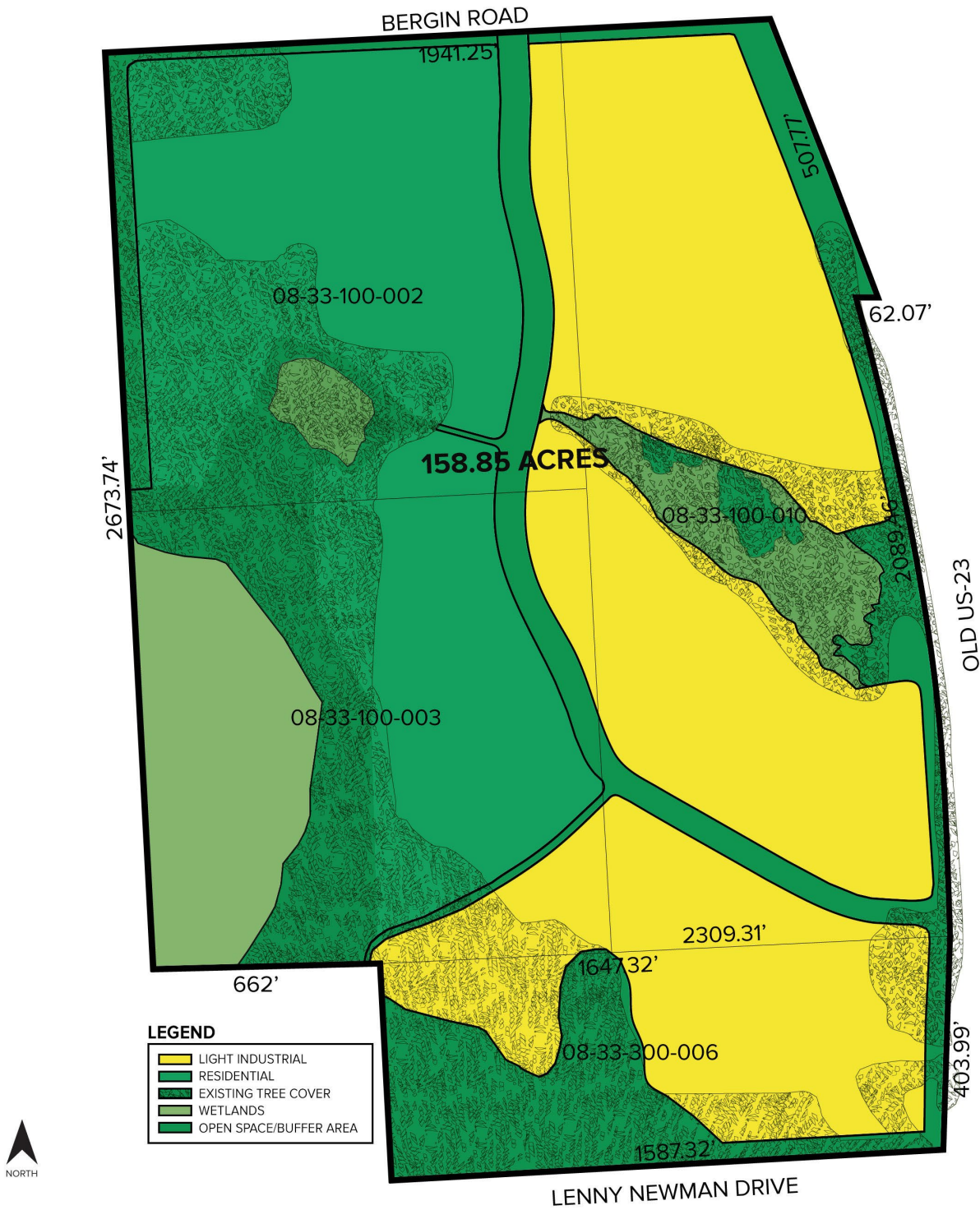
SIGNATURE ASSOCIATES
One Towne Square, Suite 1200
Southfield, MI 48076
www.signatureassociates.com

Old US-23 – Hartland Twp., Michigan

Land For Sale

158.85
Acres
AVAILABLE

Parcel Map



For more information, please contact:

JEFF LEMANSKI
(248) 359 0641
jlemanski@signatureassociates.com

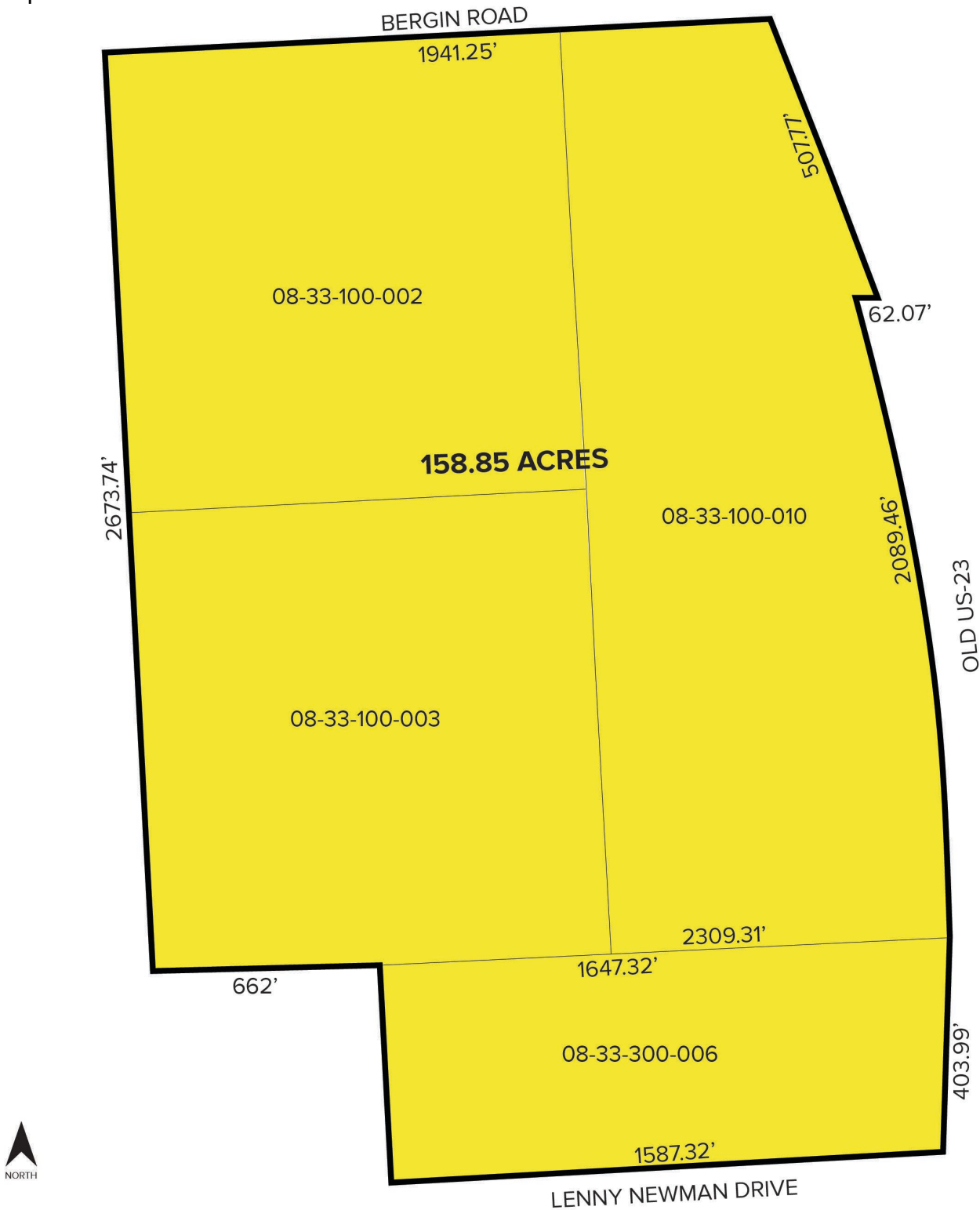
STEVE GORDON
(248) 948 0101
sgordon@signatureassociates.com

SIGNATURE ASSOCIATES
One Towne Square, Suite 1200
Southfield, MI 48076
www.signatureassociates.com

Old US-23 – Hartland Twp., Michigan
Land For Sale

158.85
Acres
AVAILABLE

Parcel Map



For more information, please contact:

JEFF LEMANSKI
(248) 359 0641
jlemanski@signatureassociates.com

STEVE GORDON
(248) 948 0101
sgordon@signatureassociates.com

SIGNATURE ASSOCIATES
One Towne Square, Suite 1200
Southfield, MI 48076
www.signatureassociates.com

Information is subject to verification and no liability for errors or omissions is assumed. Price is subject to change and listing withdrawal.