

127 Heron Way, Merced, CA FOR LEASE


Tinetti Realty Group
Lic #00475070



JACOB MORGNER
BROKER ASSOCIATE
TINETTI REALTY GROUP
DRE# 01882378

PROPERTY DESCRIPTION

Property Address	127 Heron Way, Merced CA 95341
APN	059-430-023-000
Square Footage	±4,975
Lot size	±1.5 acres
Year Built	2003
Parking	5 stalls in the front lot with ample room on paved areas.
Grade Level Doors	2 roll up doors 14' by 14'
Office Area	Approx. 1,100 sq ft
Warehouse Area	Approx. 3,875 sq ft
Power	3 Phase 200 amps
Zoning	Light Industrial I-L
Price per month	\$5,000 NNN
Price per SF	\$1.00 NNN

The building is comprised of approximately 1,100 SF of office space and 3,875 SF of fully insulated warehouse. Power is provided by MID which is up to 25% lower cost than PGE.

Additional yard space may be available at a negotiated rate.

Tenant shall be responsible for reimbursing the property operating expenses (NNN) to Landlord. Tenant shall be responsible for all maintenance.



OFFICE PHOTOS



WAREHOUSE PHOTOS



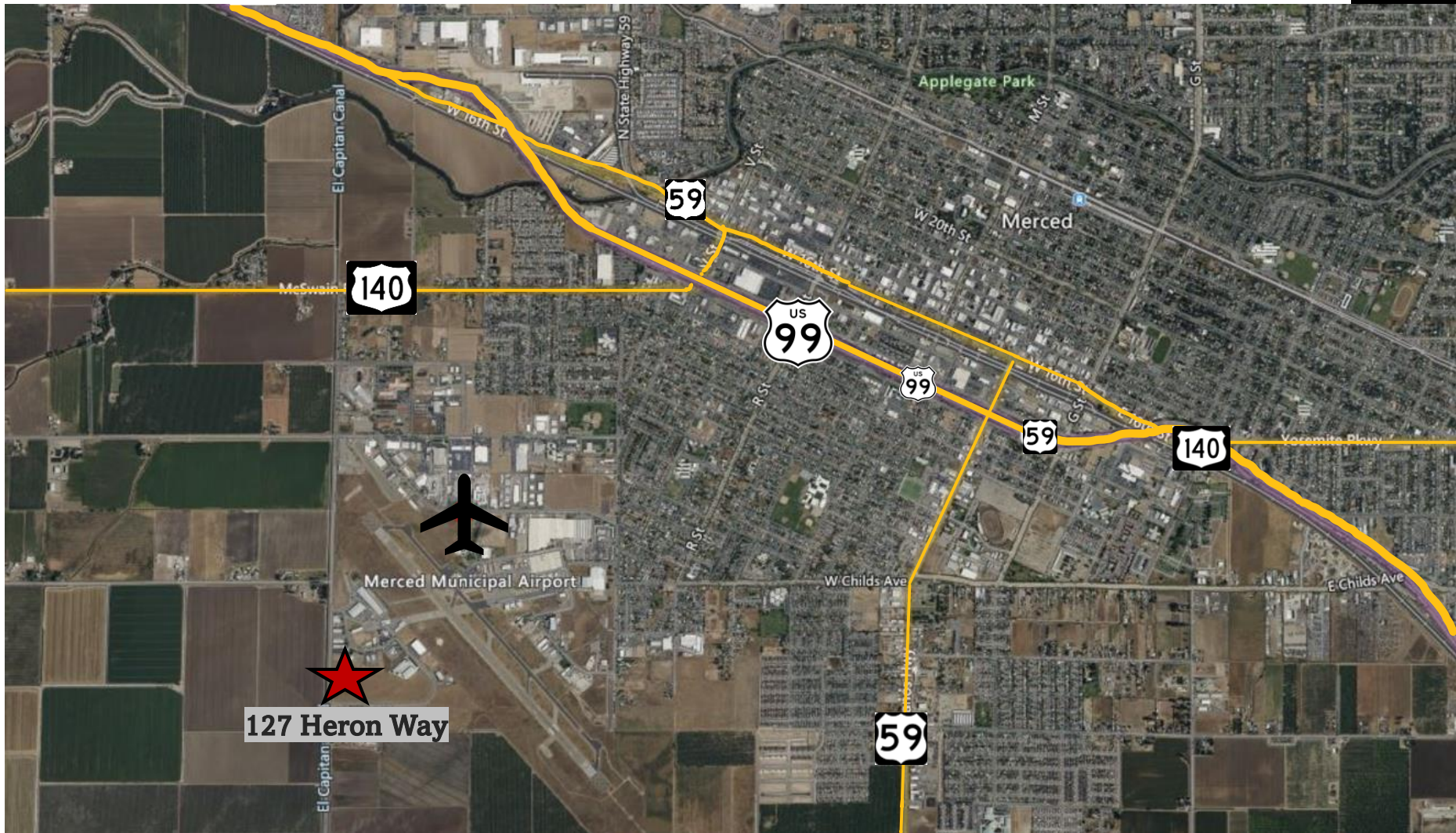
EXTERIOR PHOTOS



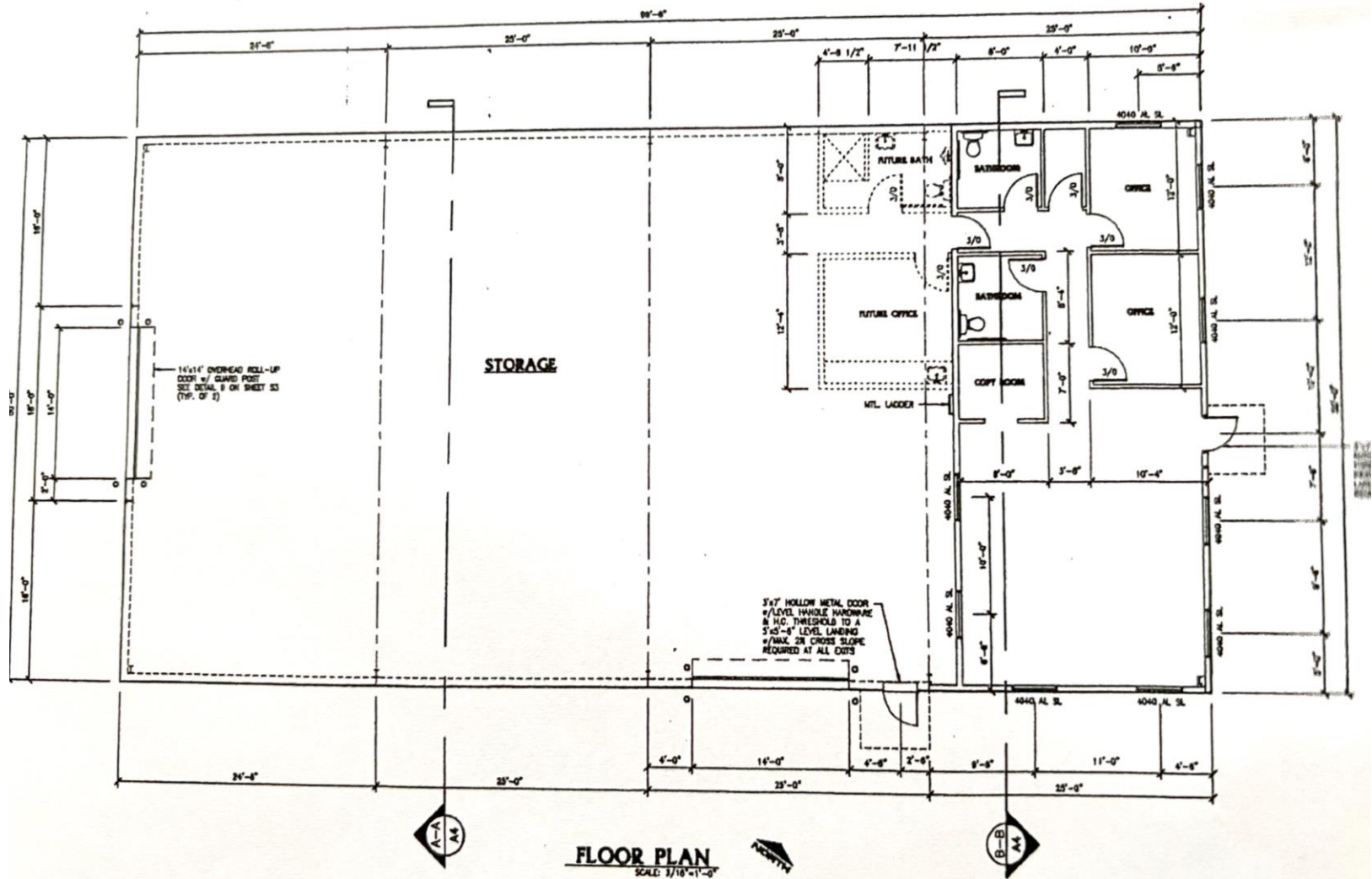
The warehouse has Two 14' x 14' Roll up doors as well as ample space for storage and/or parking.



HWY AERIAL MAP



FLOOR PLAN



ASSESSOR MAP

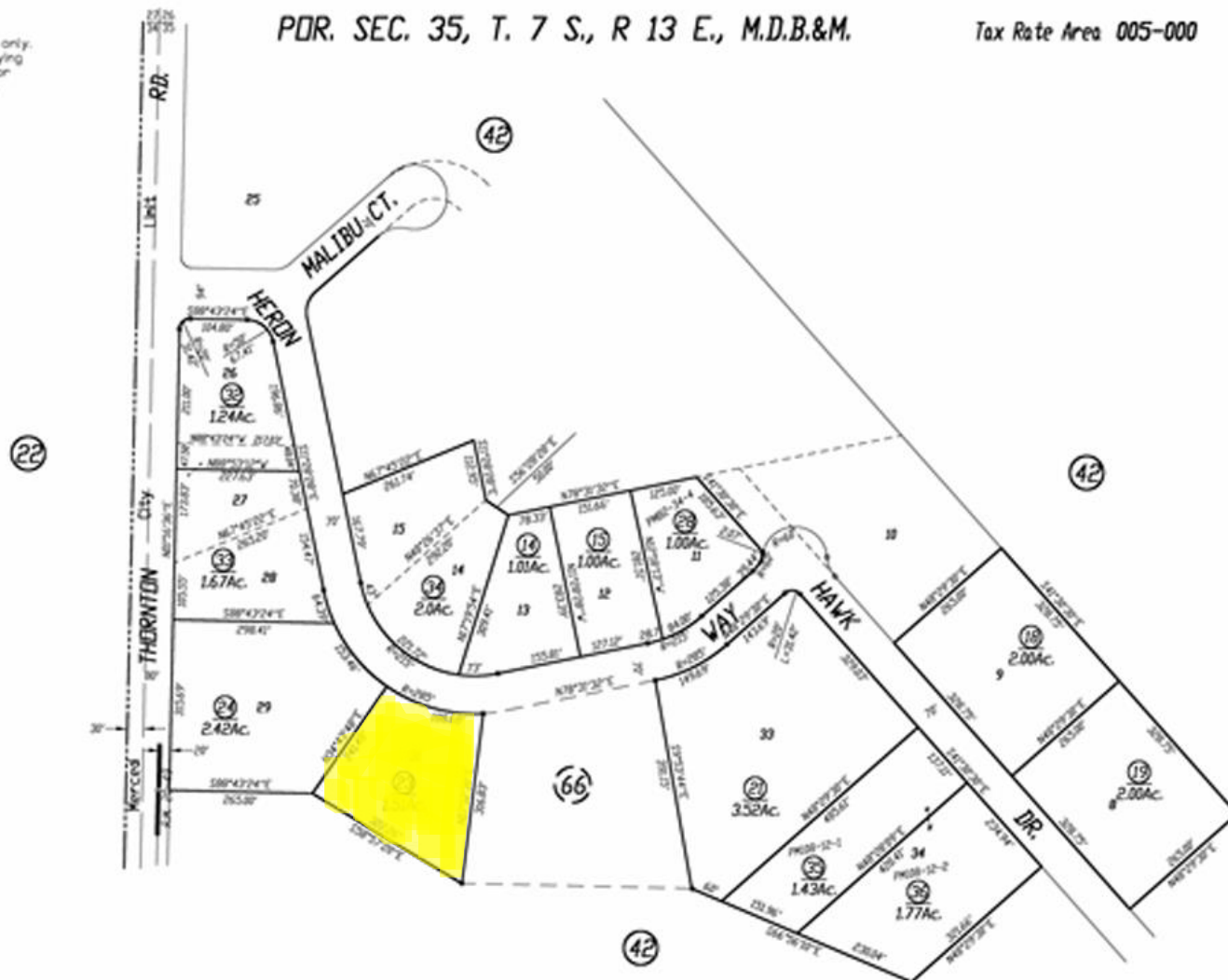
- NOTE -

This map is for Assessment purposes only.
It is not to be construed as portraying
legal ownership or divisions of land for
purposes of zoning or subdivision law.

PDR. SEC. 35, T. 7 S., R. 13 E., M.D.B.&M.

Tax Rate Area 005-000

59-43



REVISED 6-25-10

Merced Airport Industrial Park, R.M. Vol. 20, Pg. 49

NOTE - Assessor's Block Numbers Shown in Ellipses
Assessor's Parcel Numbers Shown in Circles

Assessor's Map Bk. 59 Pg. 43
County of Merced, Calif.
1973



Jacob Morgner

Tinetti Realty Group

2930 G St., Merced, CA 95340

C: 209-617-2679

O: 209-354-3830

Jacob@mercedrealestate.com

CA BRE Lic. #: 01882378

Tinetti Realty Group. ("TRG") has used reasonable care in obtaining the information and assembling the estimates and projections contained herein, this material is submitted without representation or warranty. All information is subject to modification due to changes in the market, further clarifications, or other events beyond the control of TRG