

M E R I D I A N

147 S. CHERRY STREET, SUITE 200 | WINSTON-SALEM, NC 27101 | P 336.722.1986 | F 336.723.3173 | MERIDIANREALTY.COM

1,905± SF Commercial Space

## 50 W. Fourth Street Winston-Salem, NC 27101



### Property Details

Prime commercial space at the heart of downtown. 1,905± SF on the northeast corner facing Kimpton Hotel, One West Fourth, and Winston Tower. Patio and parking on Main Street. High ceilings and dramatic historical bones. New windows along Main Street. Ingress/egress with apartments.



For more information:

**Charlie H. Fulk, CCIM**

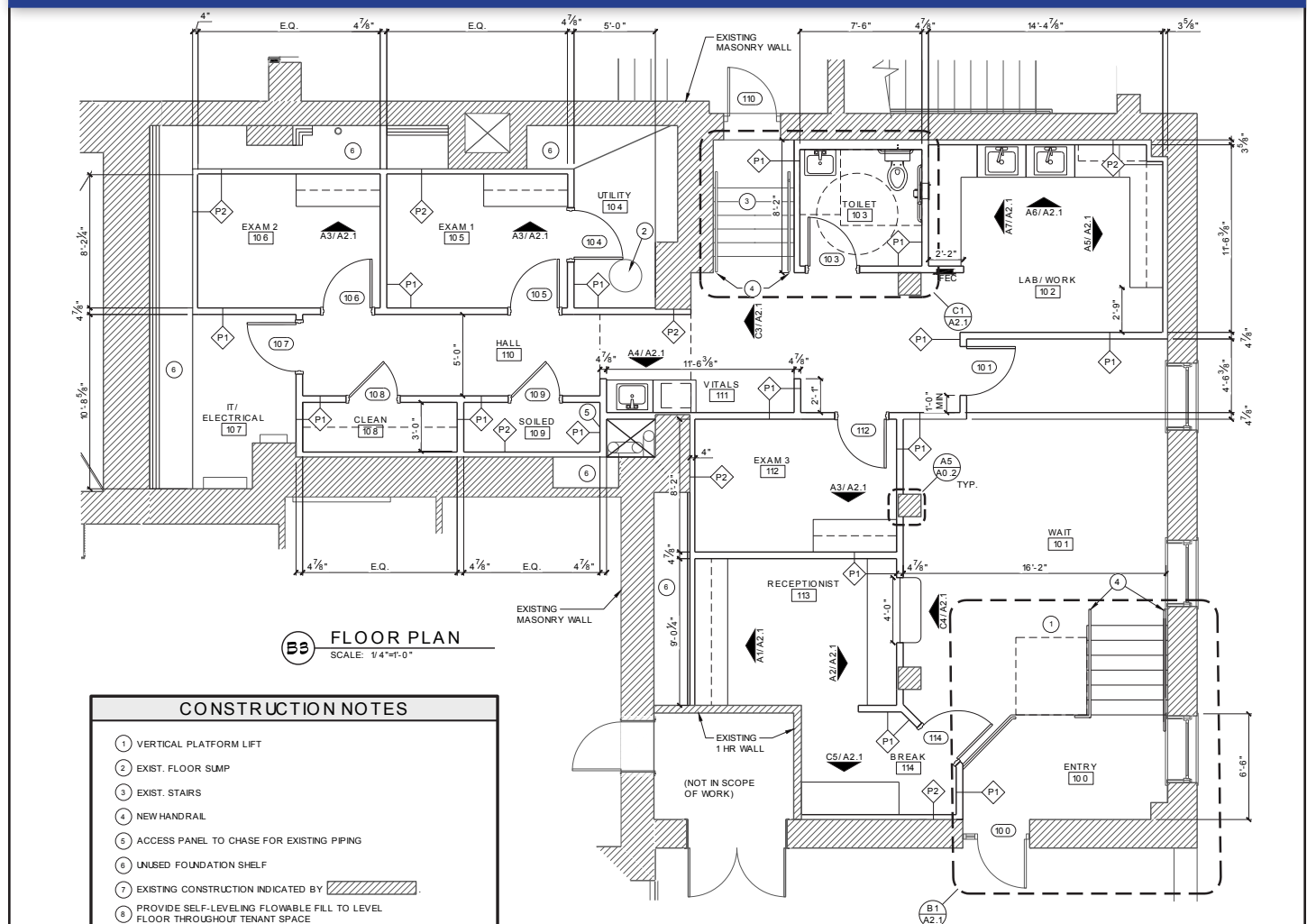
Cfulk@meridianrealty.com

336.480.2089

**FOR LEASE: \$18 PSF Plus Utilities**

WWW.MERIDIANREALTY.COM

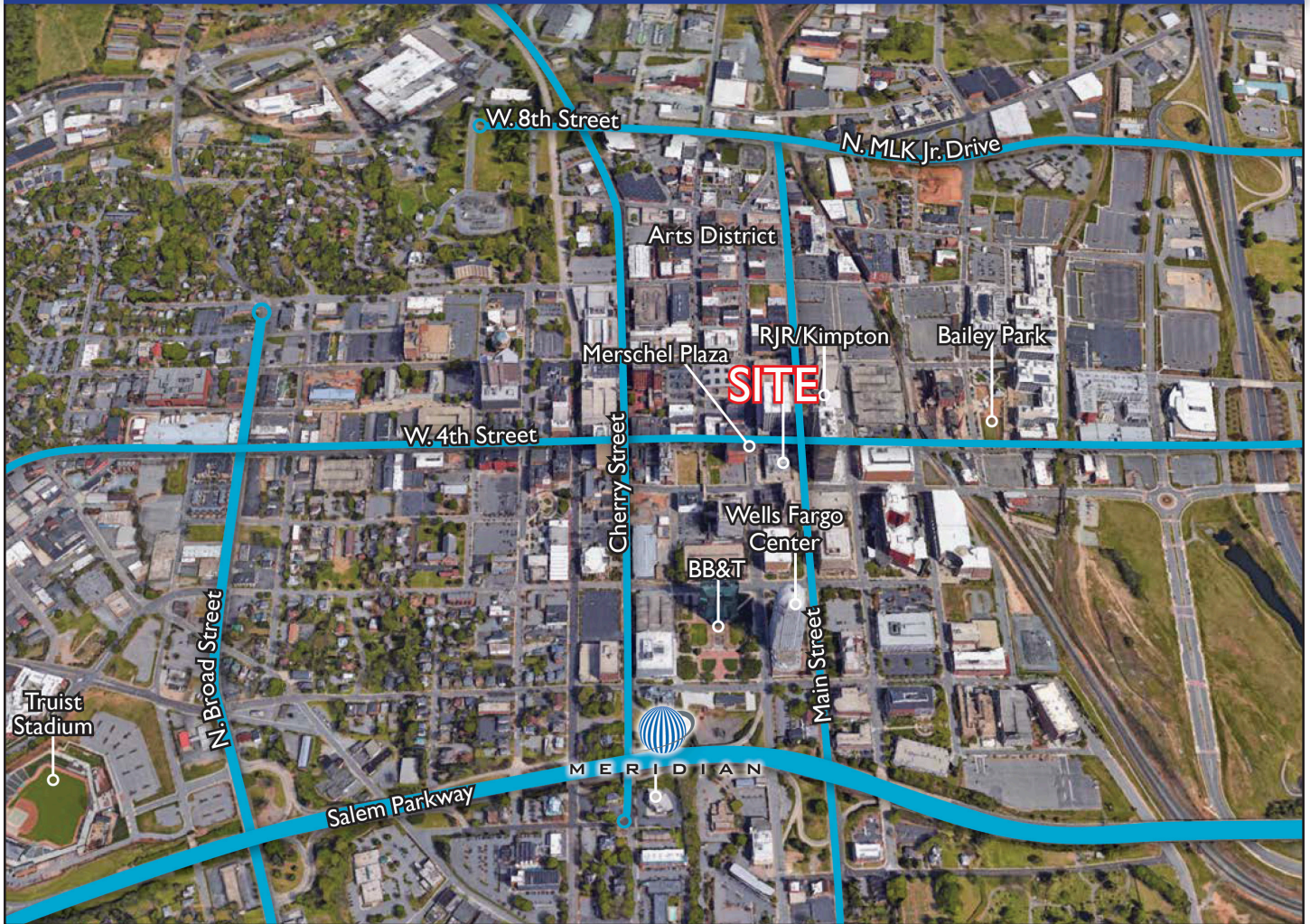
## FLOORPLAN



## INTERIOR PHOTOS



FLOORPLAN



# 50 W. Fourth Street | Winston-Salem, NC 27101



- 1,905± SF on the northeast corner facing Kimpton Hotel, One West Fourth and Winston Tower
- Patio and parking on Main Street
- High ceilings and dramatic historical bones
- Ingress/egress with apartments
- Prime commercial space at "Main & Main"
- 58 market rate apartment development (50westfourth.com)
- For Lease: \$18.00 PSF Plus Utilities



No warranty or representation (express or implied) is made as to the accuracy or completeness of the information set forth herein. All information is submitted subject to errors, omissions, change of price, prior lease or sale, and withdrawal without notice. All marketing material produced by the Meridian Realty Group is proprietary. Any reproduction is expressly prohibited.



THE MERIDIAN REALTY GROUP | 147 S. CHERRY STREET, SUITE 200 | WINSTON-SALEM, NC 27101  
P 336.722.1986 | F 336.723.3173

WWW.MERIDIANREALTY.COM