

OFFICE SPACES AVAILABLE FOR LEASE
3496 BUSKIRK AVE, PLEASANT HILL



PRESENTED BY:

DAN MOYLAN
925-239-1427
dmoylan@lee-associates.com
LIC# 00845782



GROUND FLOOR OFFICE SPACES FOR LEASE

3496 BUSKIRK AVE, PLEASANT HILL

LISTING DATA:

PROPERTY INFORMATION:

- Suite 100: ±594 SF
- Suite 102: ±507 SF
- Suite 103: ±632 SF
- 4/1,000 parking
- Flexible term available
- Efficient floor plan
- Available 8/1/25

ECONOMIC DATA:

\$2.35 PSF FULL SERVICE

HIGHLIGHTS:

- Located close to Highway 680 and 242
- Close proximity to a variety of eating establishments and retail services
- Contra Costa County Bus Service to the Front of the Property
- Short Distance to Pleasant Hill BART

PRESENTED BY:

DAN MOYLAN

925-239-1427

dmoylan@lee-associates.com

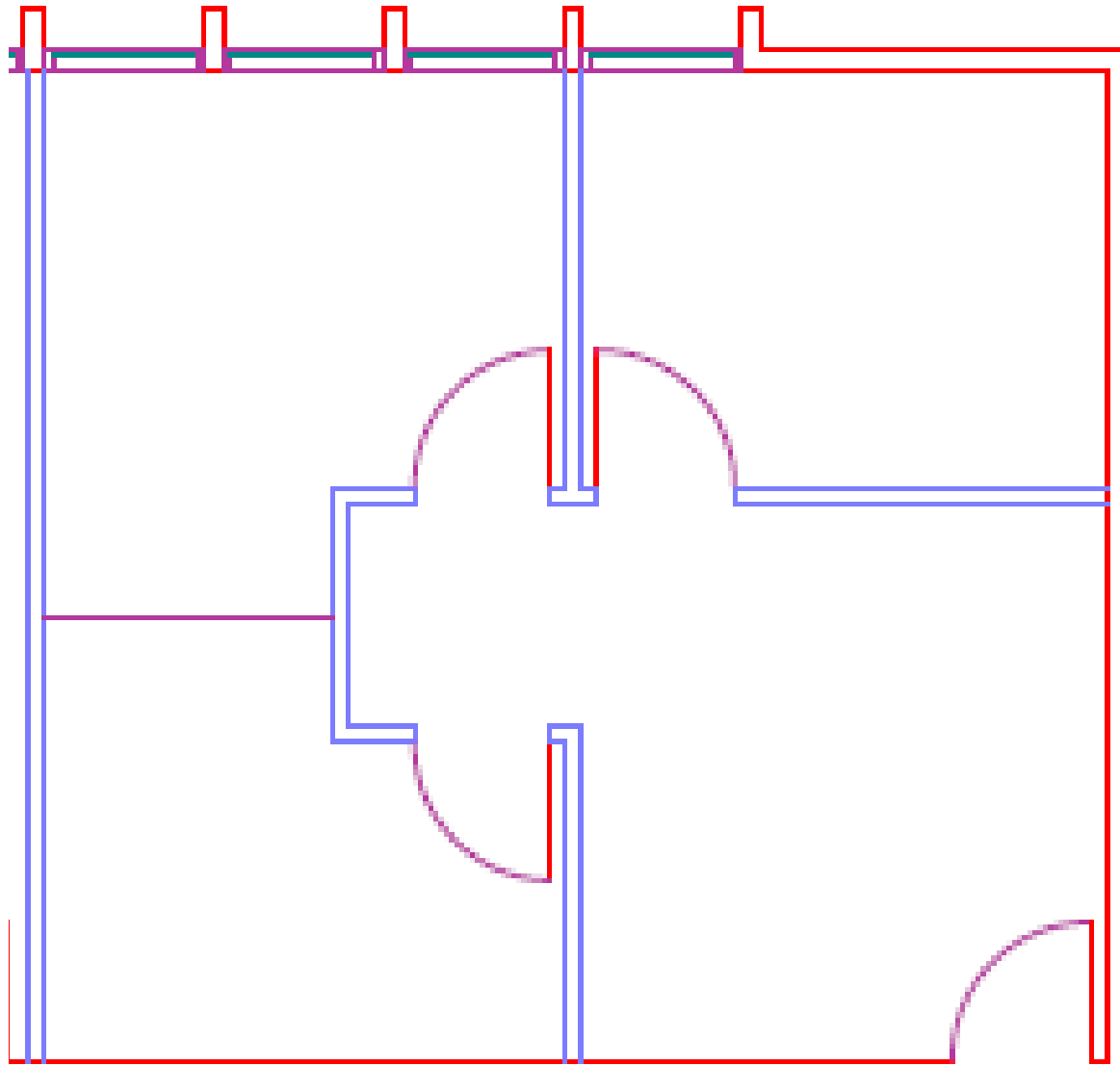
LIC# 00845782



GROUND FLOOR OFFICE SPACES FOR LEASE

3496 BUSKIRK AVE, PLEASANT HILL

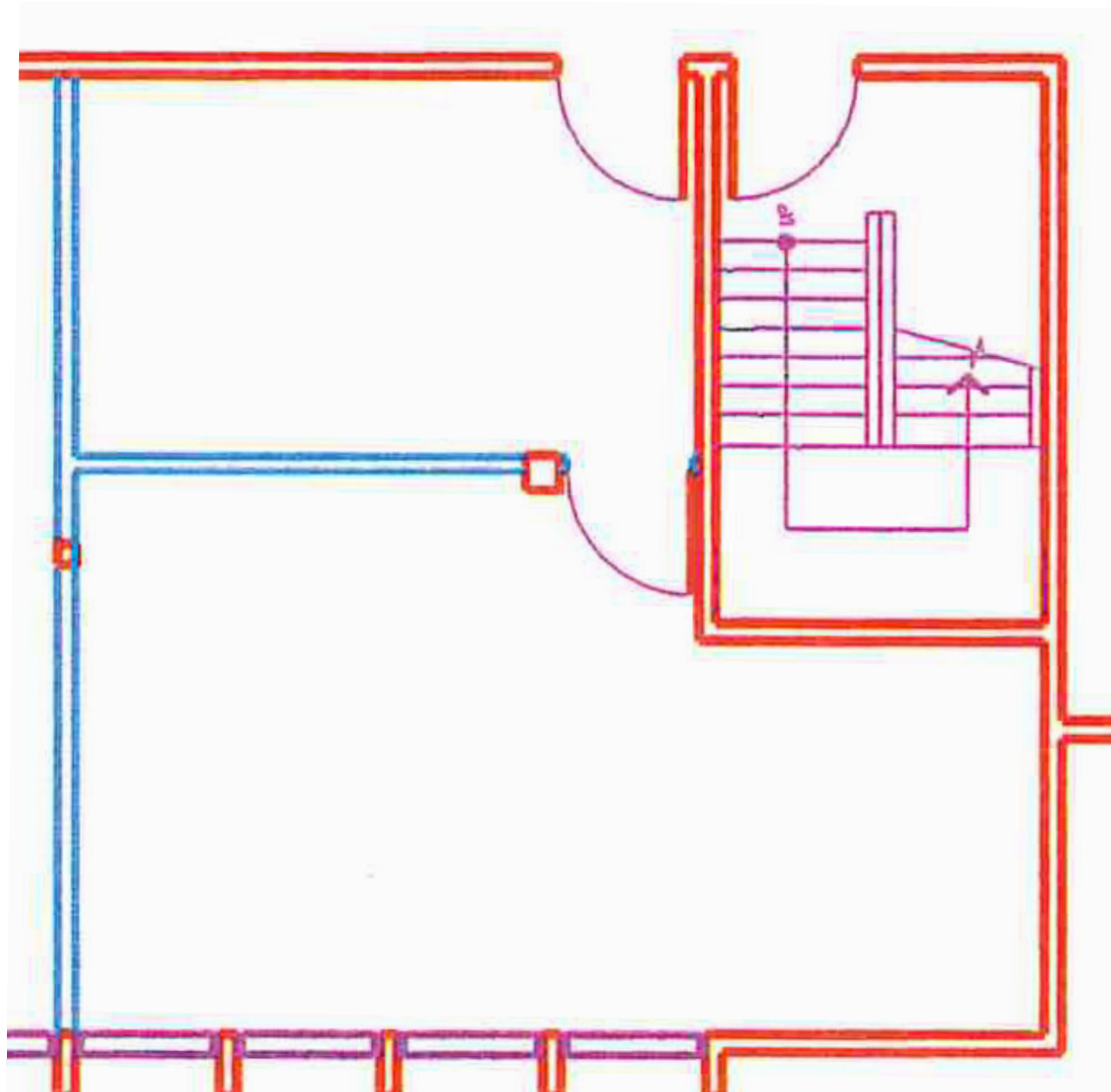
SUITE 100 FLOOR PLAN: ±594 SF



GROUND FLOOR OFFICE SPACES FOR LEASE

3496 BUSKIRK AVE, PLEASANT HILL

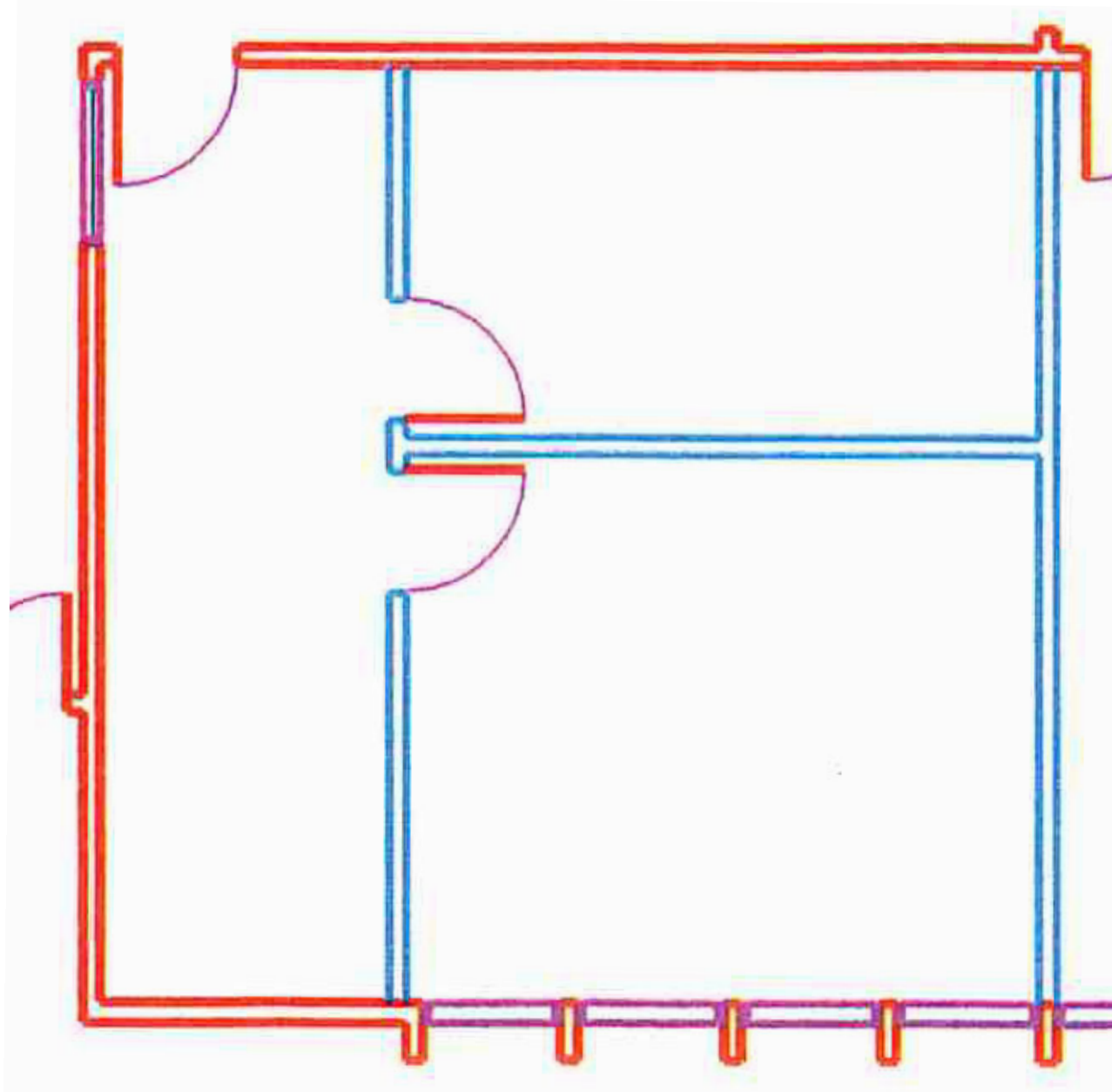
SUITE 102 FLOOR PLAN: ±507 SF



GROUND FLOOR OFFICE SPACES FOR LEASE

3496 BUSKIRK AVE, PLEASANT HILL

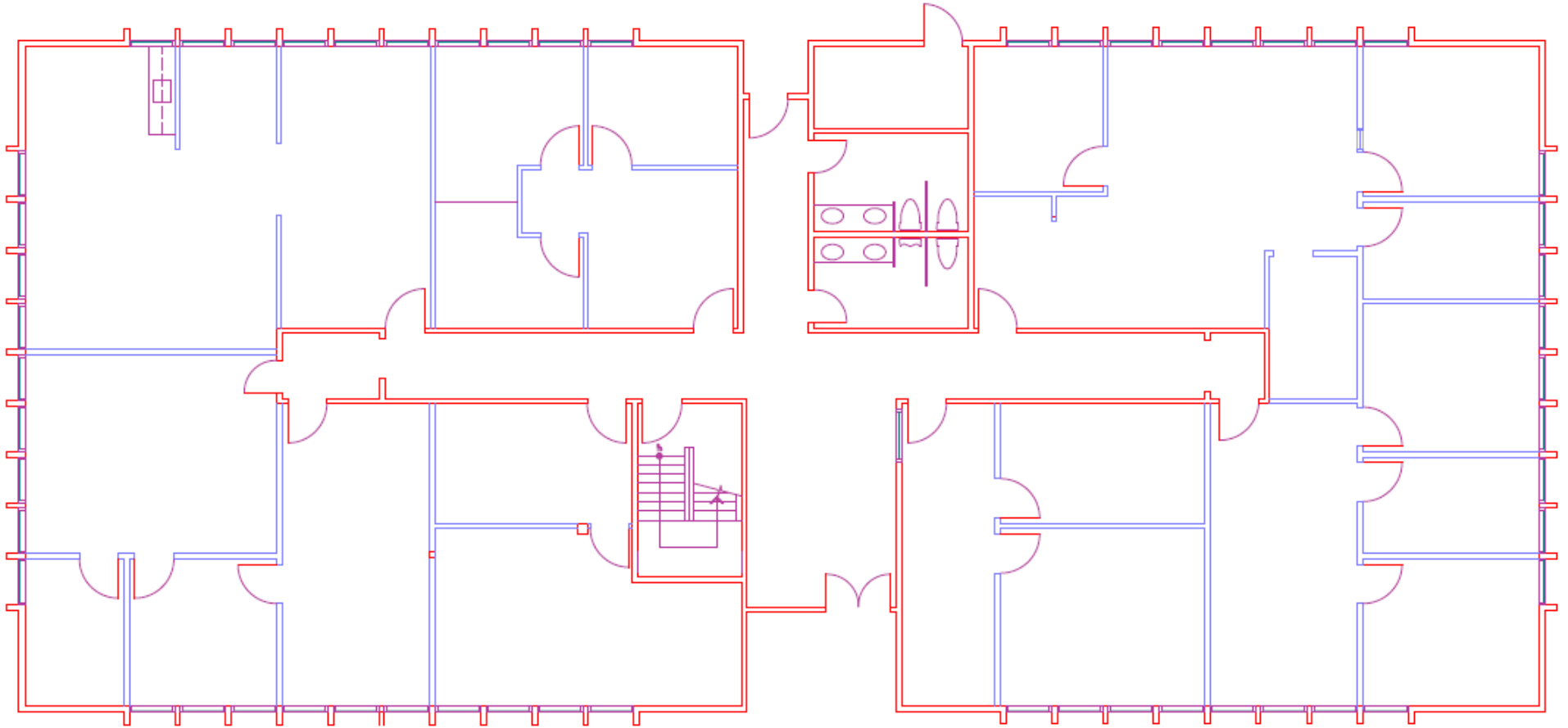
SUITE 103 FLOOR PLAN: ±632 SF



GROUND FLOOR OFFICE SPACES FOR LEASE

3496 BUSKIRK AVE, PLEASANT HILL

FIRST FLOOR SUITES PLAN:



GROUND FLOOR OFFICE SPACES FOR LEASE

3496 BUSKIRK AVE, PLEASANT HILL

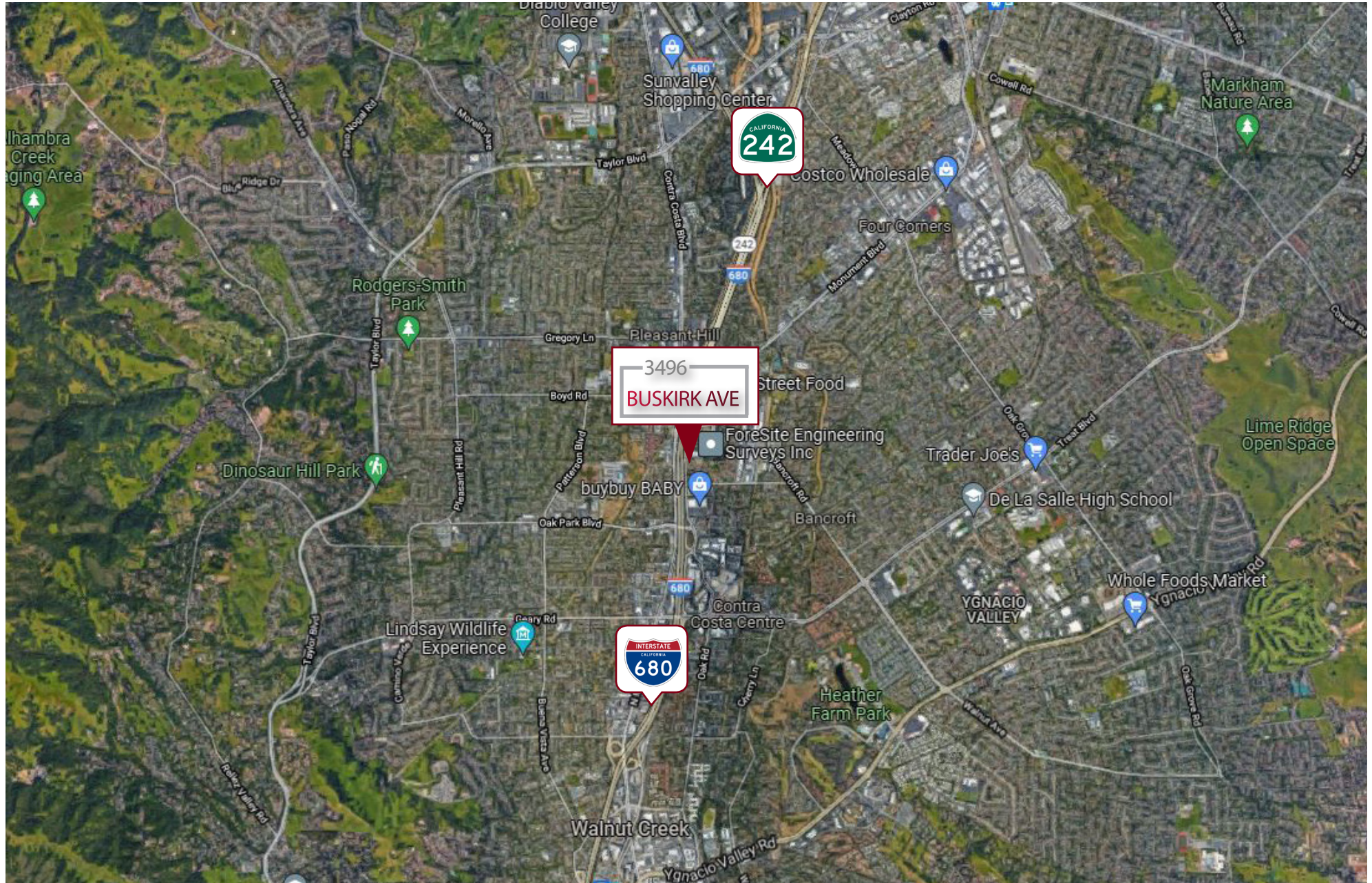
NEARBY AMENITIES:



GROUND FLOOR OFFICE SPACES FOR LEASE

3496 BUSKIRK AVE, PLEASANT HILL

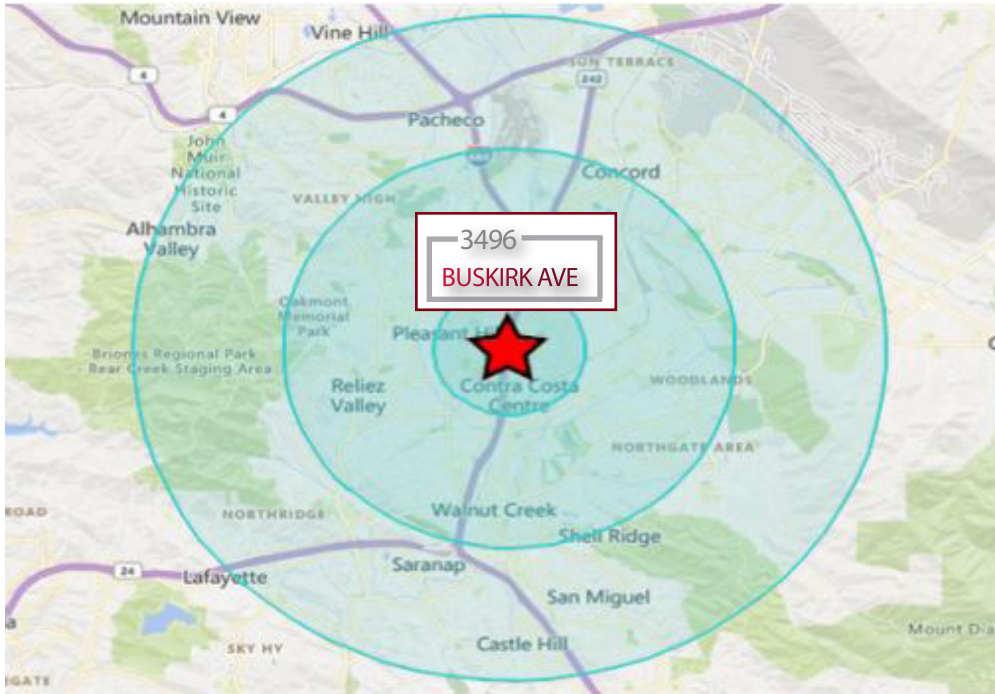
LOCATION OVERVIEW:



GROUND FLOOR OFFICE SPACES FOR LEASE

3496 BUSKIRK AVE, PLEASANT HILL

DEMOGRAPHICS:



	1 MILE	3 MILES	5 MILES
--	--------	---------	---------



POPULATION

23,115

155,550

291,738



MEDIAN AGE

38

41

43



AVERAGE HOUSEHOLD INCOME

\$115,195

\$138,268

\$140,683



AVERAGE HOUSEHOLDS

10,601

63,183

117,454



TOTAL ESTABLISHMENTS

546

6,292

9,185



TOTAL CONSUMER SPENDING

\$7.7 M

\$5 B

\$9.4 B

PRESENTED BY:

DAN MOYLAN

925-239-1427

dmoylan@lee-associates.com

LIC# 00845782

*Demographics source: Landvision

