

STEVE CROCKETT

scrockett@lee-associates.com

(760) 448-2439

DRE LIC# 01027524

RUSTY WILLIAMS, SIOR

rwilliams@lee-associates.com

(760) 448-2453

DRE LIC# 01390702



FOR LEASE

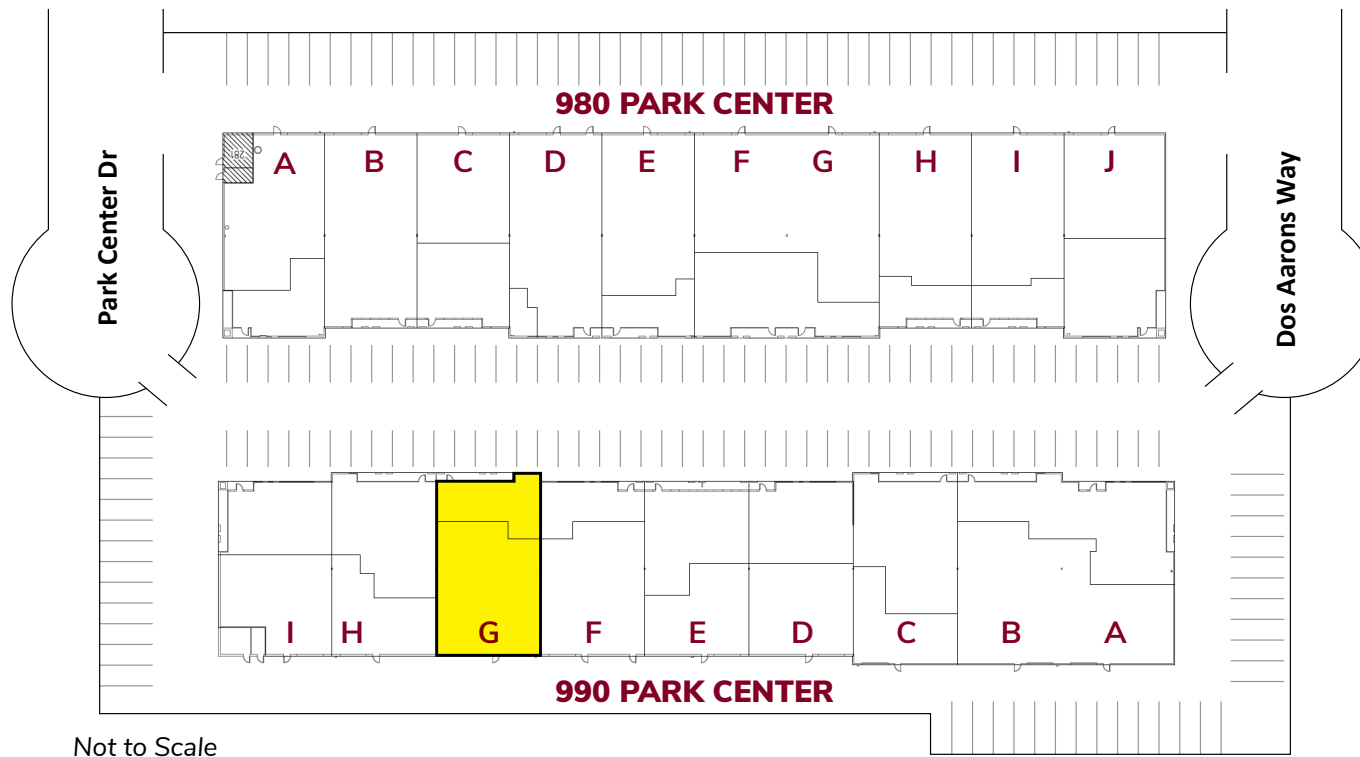
980-990 PARK CENTER DRIVE, VISTA, CA 92081

AVAILABLE: 4,064 SF

SITE PLAN

980-990 PARK CENTER

BUILDING	SUITE	SF	RATE/MONTH	NNNs	AVAILABILITY
990 Park Center	G	4,064 SF	\$1.42/SF	\$0.44/SF	Now

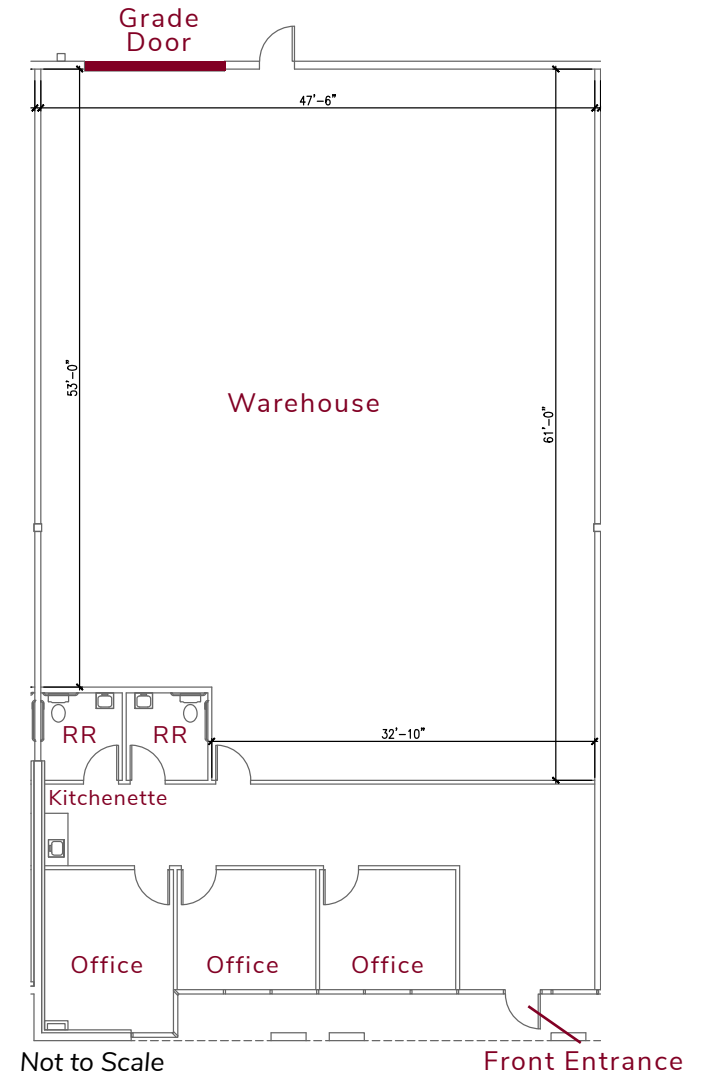


SUITE HIGHLIGHTS

980-990 PARK CENTER

990 PARK CENTER - SUITE G

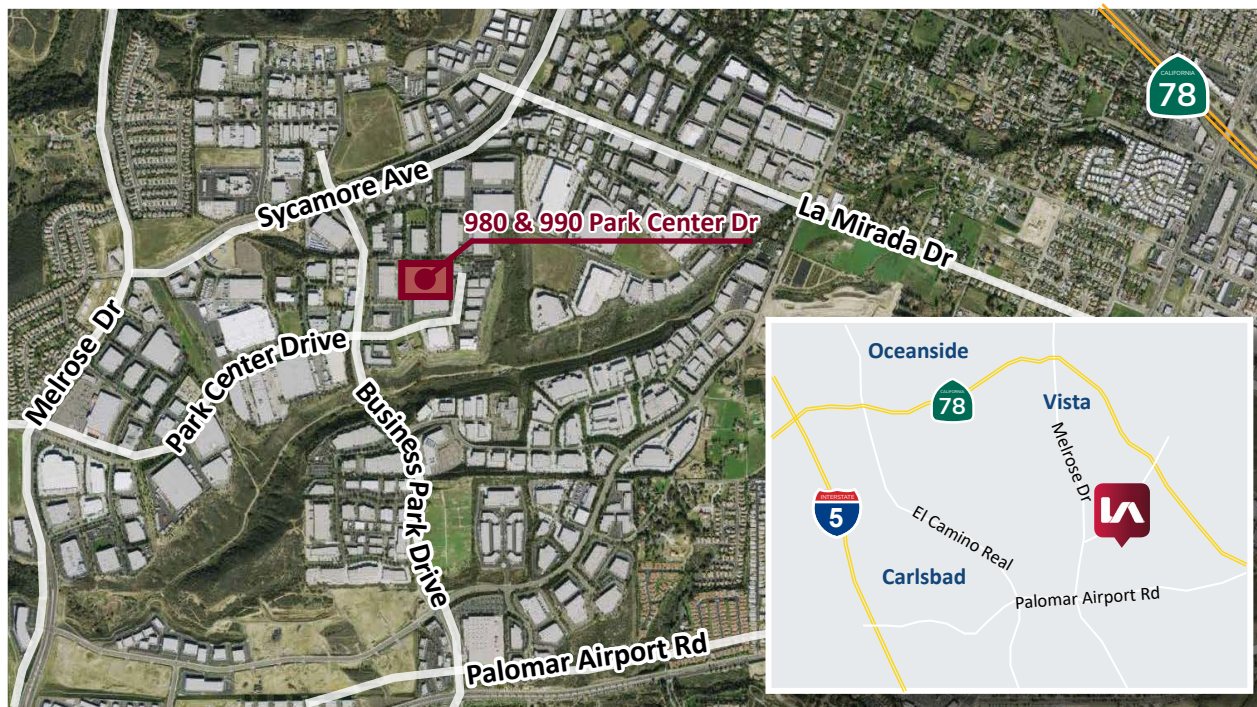
- 4,064 SF Available Now
- 30% Office
- Quality Office Improvements
- Clear Height: 18'
- Power: 480/277v and 208/120v
- Loading: One (1) 12' x 12' Grade Level Door
- Parking: 2.5/1,000 SF
- Drive Around Truck Access
- Natural Gas Available
- 2 Separate Entrances to the Park
- Dual Building Multi-Tenant Industrial Park
- **LEASE RATE: \$1.42/SF NNN**
\$0.44/SF Estimated NNNs



HIGH QUALITY MAINTENANCE 980-990 PARK CENTER



ADDITIONAL BENEFITS

- 5 year certification of sprinkler system
- Annual, plus as needed roof inspections/maintenance
- Semi-annual inspections/maintenance of HVAC
- All buildings earthquake insured by Landlord
- Flexible floor plan



STEVE CROCKETT | (760) 448-2439
scrockett@lee-associates.com | DRE LIC# 01027524

RUSTY WILLIAMS, SIOR | (760) 448-2453
rwilliams@lee-associates.com | DRE LIC# 01390702

1902 Wright Place, Suite 180 | Carlsbad, CA 92008 | P. 760-929-9700 F. 760-929-9977 | www.lee-associates.com   

All information furnished regarding property for sale, rental or financing is from sources deemed reliable, but no warranty or representation is made to the accuracy thereof and same is submitted to errors, omissions, change of price, rental or other conditions prior to sale, lease or financing or withdrawal without notice. No liability of any kind is to be imposed on the broker herein.