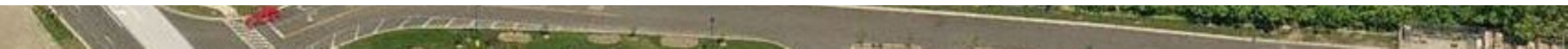


# 1191 Lake Ave

WOODSTOCK, IL

187,850 SF AVAILABLE FOR SALE

RAIL SERVED & HEAVY POWER  
WITH PARKING & BUILDING  
EXPANSION POTENTIAL



## 1191 LAKE AVE, WOODSTOCK, IL | PROPERTY OVERVIEW



Available SF: 187,850 SF  
(111,379 SF | 76,471 SF)



Office SF: 7,500 SF  
(6,500 SF | 1,000 SF)



Site Size: 19.09 Acres



Loading: 7 Interior Docks  
1 Exterior Dock  
4 Drive-in Doors



Rail Served: Union Pacific (2 Rail Doors)



Clear Height: 30' - 32' Clear (111,379 SF)  
19' - 21' Clear (76,471 SF)



Power: 800 Amps, 3-Phase, 277/480 Volts  
(Expandable)



Years Built: 1987/1990




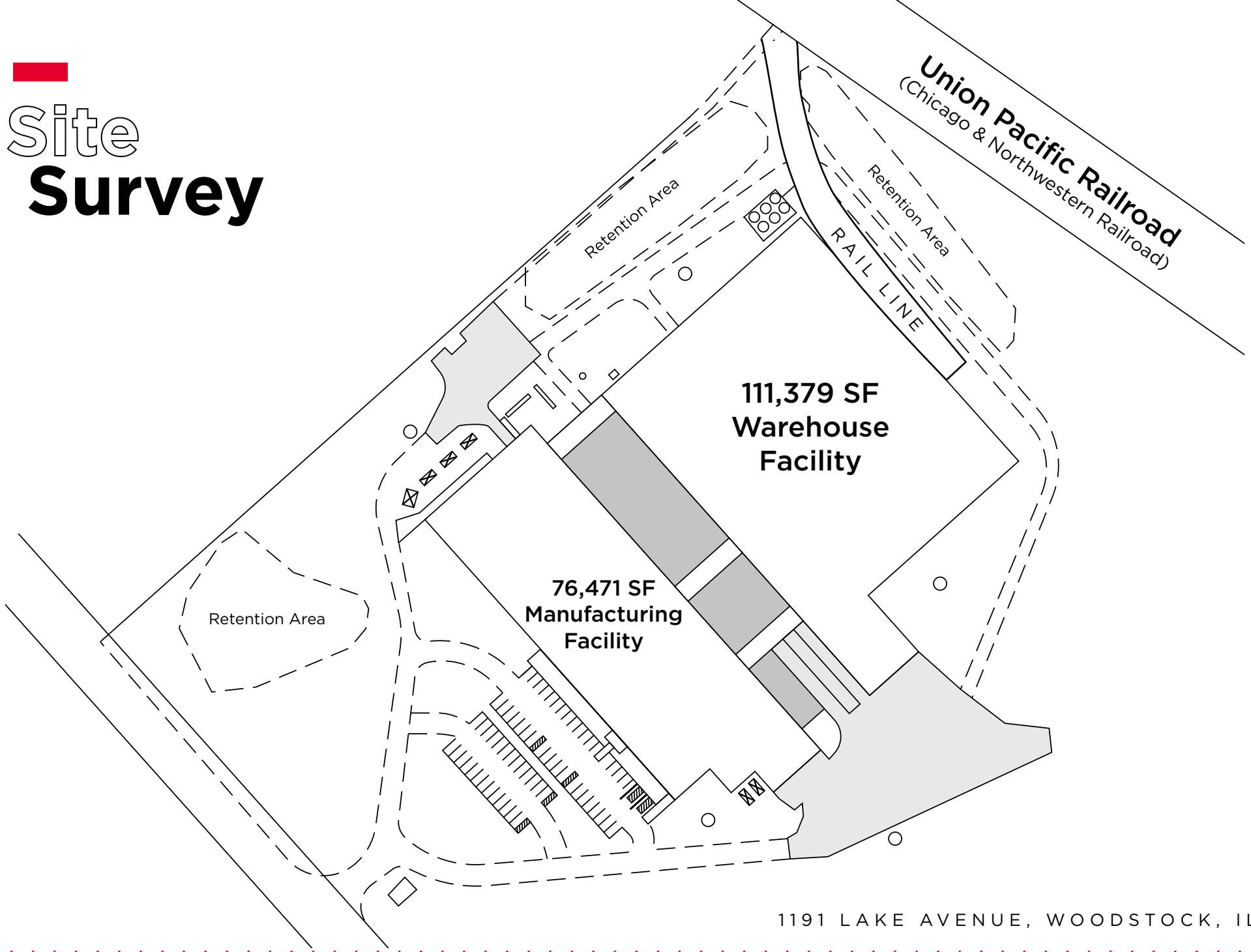
Sale Price: Subject to Offer

### Strengths:

- Former plastics injection molding facility with heavy infrastructure
- 32' clear warehouse facility with 50'x70' column spacing (111,379 SF)
- Fully air-conditioned manufacturing facility (76,471 SF)
- Large land site for potential expansion or future development
- McHenry County taxes \$0.64 PSF



  
**Site  
Survey**



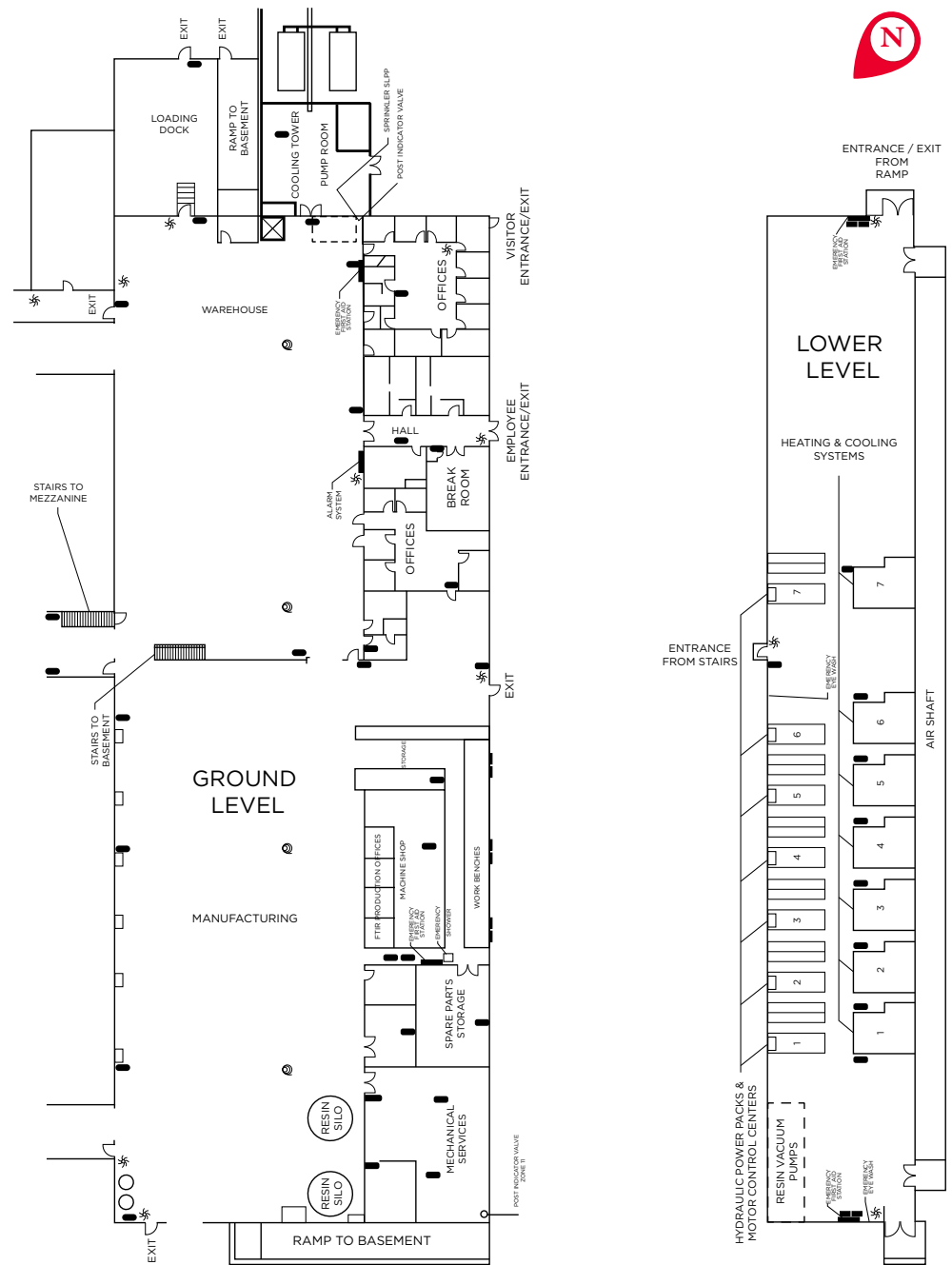
1191 LAKE AVENUE, WOODSTOCK, IL



# Manufacturing Facility

## MANUFACTURING BUILDING OVERVIEW:

Size:	76,471 SF
Office SF:	6,500 SF
Clear Height:	19' - 21' Clear
Bay Sizes:	25'x34' and 25'x50' Speed Bay: 65'
Cranes:	Two 5-ton Bridge Cranes (60' Span & 15' Clear Under Hook)
Loading:	3 Interior Docks 1 Exterior Dock 2 Drive-in Doors



1191 LAKE AVENUE, WOODSTOCK, IL

# Warehouse Facility

## WAREHOUSE BUILDING OVERVIEW:

Size: 111,379 SF

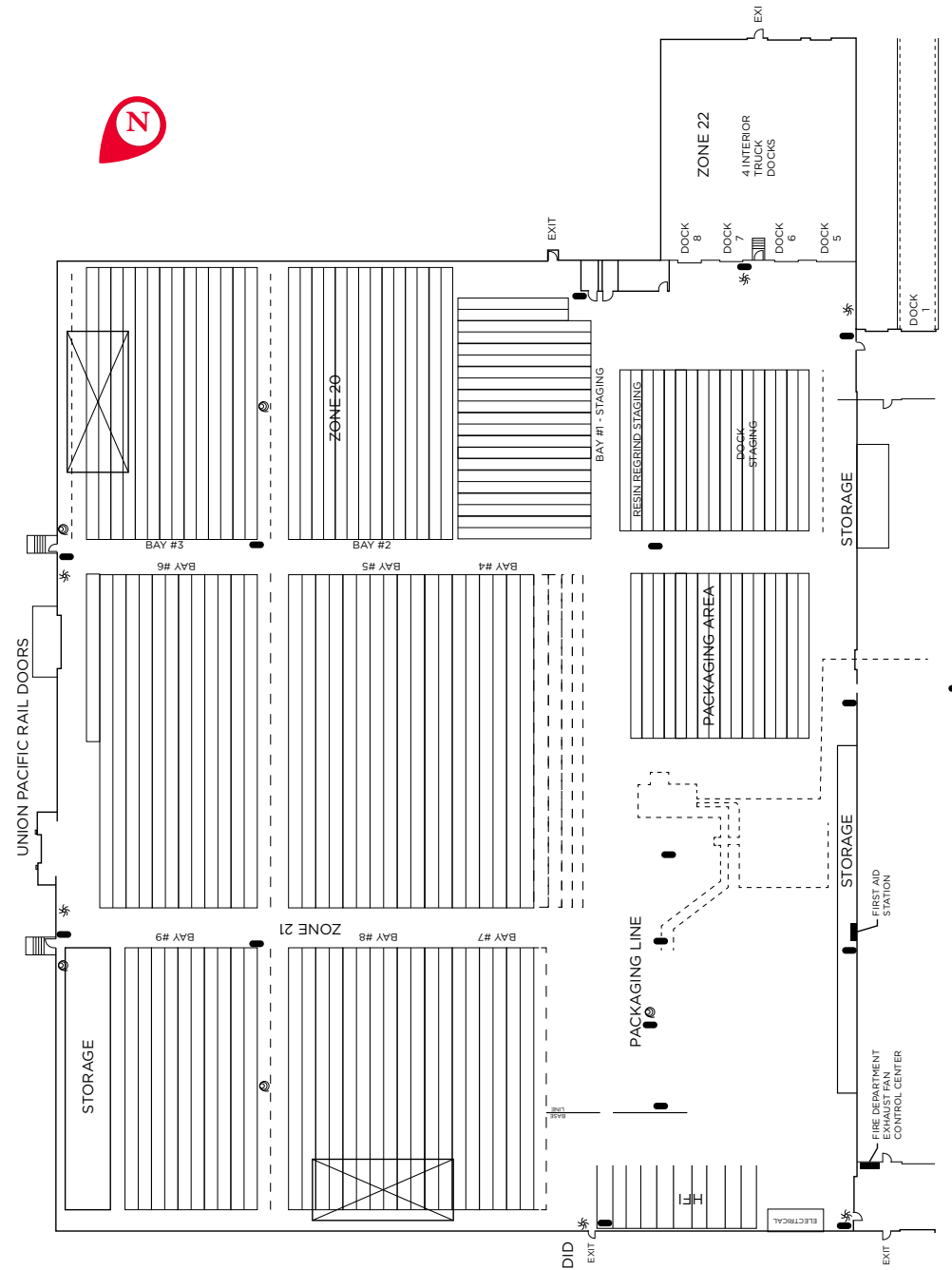
Office SF: 1,000 SF

Clear Height: 30' - 32' Clear

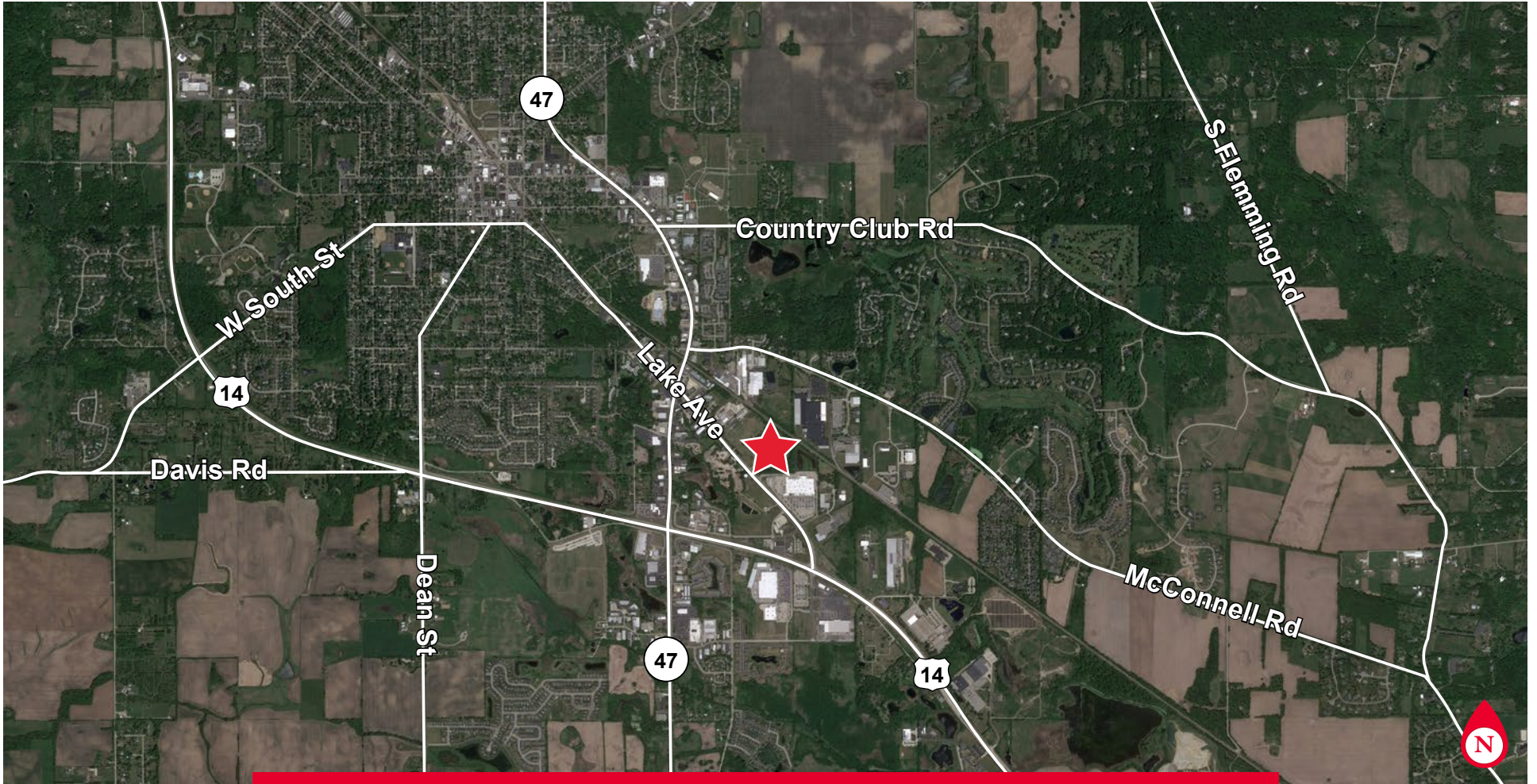
Bay Sizes: 50'x70'

Rail: Union Pacific | 2 Rail Doors (12'x20' and 10'x10')

Loading: 4 Interior Docks  
2 Drive-in Doors (10'x16')



1191 LAKE AVENUE, WOODSTOCK, IL



# Aerial Map

- 0.06 MILE TO ROUTE 47
- 13.1 MILES TO I-90
- 47.3 MILES TO O'HARE AIRPORT
- 61.5 MILES TO DOWNTOWN CHICAGO

1191 LAKE AVENUE, WOODSTOCK, IL

# 1191 Lake Ave



## Mike Magliano

Executive Managing Director  
+ 1 847 518 3259  
michael.magliano@cushwake.com

## Seth Cole

Associate  
+1 847 845-3656  
seth.cole@cushwake.com

## Al Caruana

Executive Director  
+1 847 720 1326  
al.caruana@cushwake.com



©2024 Cushman & Wakefield. All rights reserved. The information contained in this communication is strictly confidential. This information has been obtained from sources believed to be reliable but has not been verified. NO WARRANTY OR REPRESENTATION, EXPRESS OR IMPLIED, IS MADE AS TO THE CONDITION OF THE PROPERTY (OR PROPERTIES) REFERENCED HEREIN OR AS TO THE ACCURACY OR COMPLETENESS OF THE INFORMATION CONTAINED HEREIN, AND SAME IS SUBMITTED SUBJECT TO ERRORS, OMISSIONS, CHANGE OF PRICE, RENTAL OR OTHER CONDITIONS, WITHDRAWAL WITHOUT NOTICE, AND TO ANY SPECIAL LISTING CONDITIONS IMPOSED BY THE PROPERTY OWNER(S). ANY PROJECTIONS, OPINIONS OR ESTIMATES ARE SUBJECT TO UNCERTAINTY AND DO NOT SIGNIFY CURRENT OR FUTURE PROPERTY PERFORMANCE.