



STORAGE SPACE AVAILABLE

OFFERING SUMMARY

Lease Rate:	\$7.95 (NNN)
Building Size:	5,050 +/- SF
Zoning:	H-I
Use:	Dead Storage

FOR INFORMATION

BRIAN HUGHS, CCIM
Principal/Associate Broker

o | 770-988-6383
c | 678-316-4445
brian@candler.com

BENNETT SMITH

c | 770-718-6565
bennett@candler.com

135 Maple Street, NW
Gainesville, GA 30501

www.candler.com



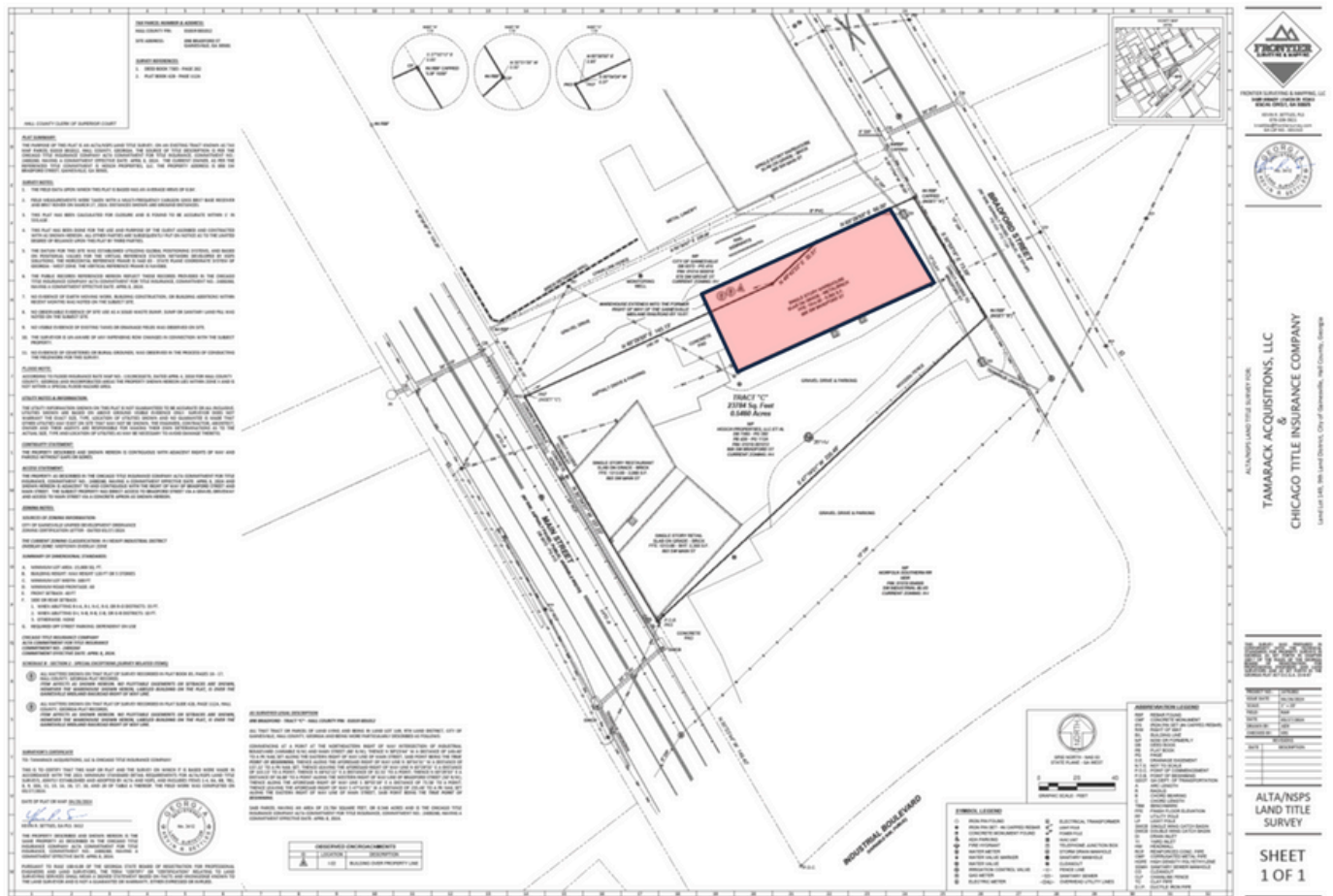
PROPERTY HIGHLIGHTS

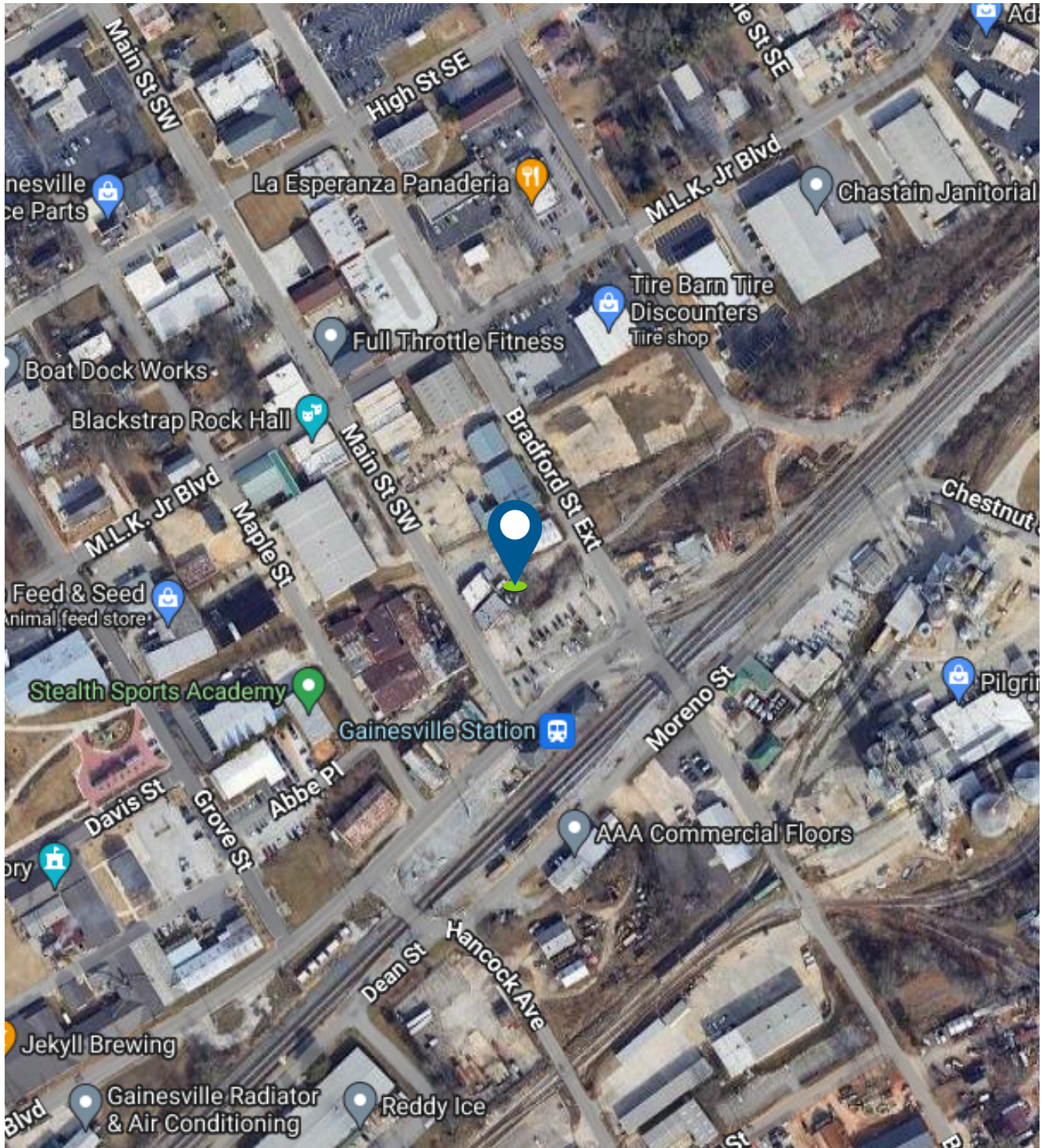
- 5,050 +/- square foot warehouse available for lease
- Potential to subdivide space
- Two restrooms
- Conditioned warehouse space
- Located behind Inked Pig in midtown Gainesville
- Centrally located near I-985 between Exit 20 and 22
- Property to be used for dead storage
- Skylights in warehouse
- Located right off future Midtown Greenway Trail Extension and across from Remedy Distillery





SURVEY







CANDLER

REAL ESTATE

FOR MORE INFORMATION, PLEASE CONTACT:

BRIAN HUGHS, CCIM

Principal/Associate Broker

o | 770-988-6383

c | 678-316-4445

brian@candler.com

BENNETT SMITH

Sales Associate

c | 770-718-6565

bennett@candler.com



Candler Real Estate | 135 Maple Street, Gainesville, GA 30501 | 770-988-6383 | www.candler.com

© 2022 Candler Real Estate. Information contained herein was obtained from sources deemed reliable and, while thought to be correct, have not been verified. Candler Real Estate does not guarantee the accuracy or completeness of the information presented, nor assumes any responsibility or liability for any errors or omissions therein.