

NOW LEASING

BUILDING 3

± 208,204 SF AVAILABLE



EASTLAND
COMMERCE CENTER



18300 VERNIER ROAD
HARPER WOODS, MICHIGAN

JOE HAMWAY
(248) 948 0113
jhamway@signatureassociates.com

GREG HUDAS
(248) 799 3162
ghudas@signatureassociates.com



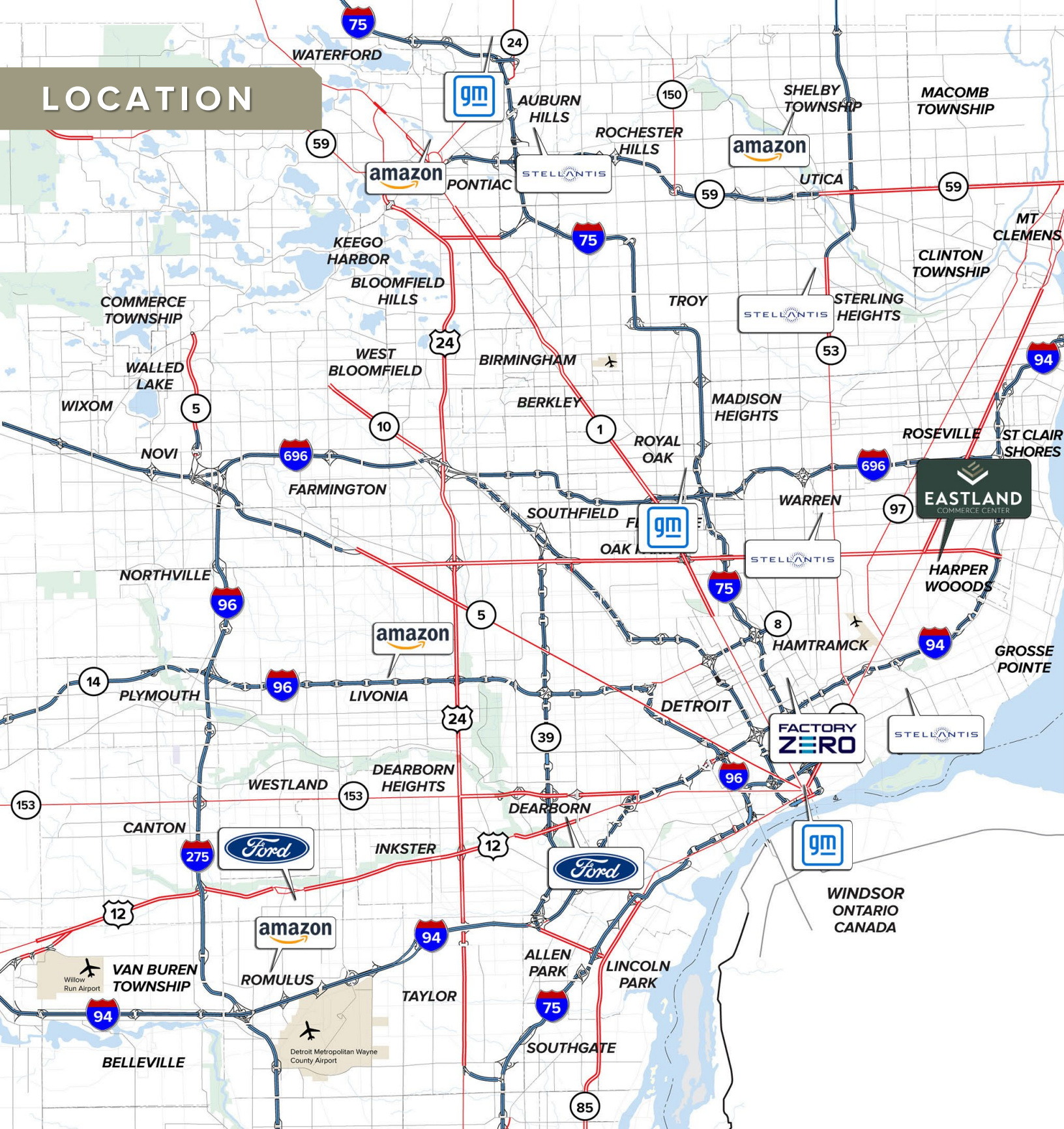
SIGNATURE ASSOCIATES
KNOW SIGNATURE | KNOW RESULTS



NorthPoint™
DEVELOPMENT

Information is subject to verification and no liability for errors or omissions is assumed. Price is subject to change and listing withdrawal.

LOCATION



LOCATION ADVANTAGES



30 MILES
DISTANCE TO
DETROIT METRO
AIRPORT



14 MILES
DISTANCE TO
DOWNTOWN
DETROIT



LOCATED NEAR
MANY AUTOMOTIVE
PLANTS AND
MANUFACTURING
HEADQUARTERS

AVAILABLE FOR LEASE
UP TO ± 1,040,646 SF



KEY SITE ADVANTAGES



**CLASS A
DISTRIBUTION
FACILITIES**



**MINUTES
TO I-94**



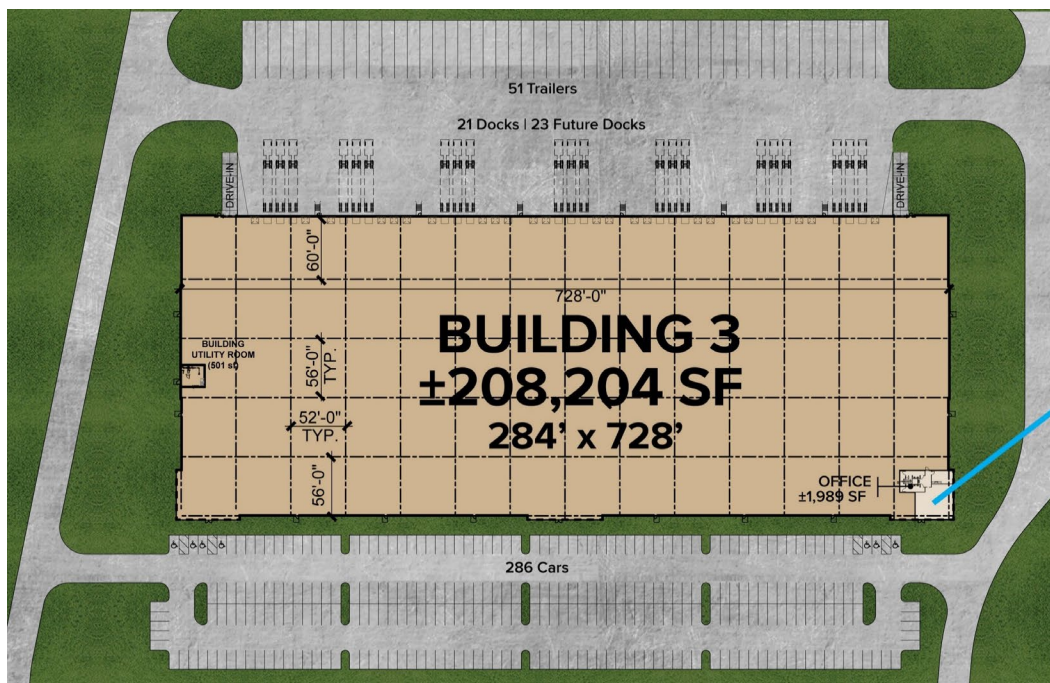
**ABUNDANT
HIGHLY SKILLED
LABOR POOL**

HIGHLY EXPERIENCED LANDLORD AND DEVELOPER:

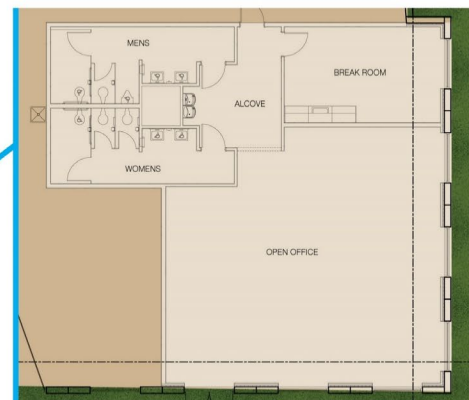
Established in 2012, NorthPoint Development has grown to a family of ten companies with an emphasis on a factory-to-front door model. Our firm differentiates itself through a strong engineering and technical focus. We employ numerous civil, geotech, electrical, and industrial engineers, as well as logistics, labor, and incentives professionals. "Beyond the Contract" embodies the concept that no contract can be written to reflect everything that will occur in a complex real estate transaction. Their approach in all business relationships is to be fair and to operate by the "Golden Rule."

BUILDING 3

AVAILABLE FOR OCCUPANCY



OFFICE ±1,989 SF



± 208,204 SQUARE FEET

36' CLEAR HEIGHT

51 TRAILER PARKING

21 DOCK DOORS

BUILDING SIZE	± 208,204	TRUCK COURTS	185' with staging and storage
BUILDING DIMENSIONS	728' X 284'	TRAILER PARKING	51 Stalls
CLEAR HEIGHT	36'	CAR PARKING	±286 Spaces
DOCKS / FUTURE DOCKS	21 / 23	FIRE PROTECTION	ESFR
DRIVE-IN DOORS	2	ELECTRIC	(2) 1000 KVA Transformers, 480V 3-phase
LIGHTING	LED	CONSTRUCTION	Tilt-up concrete
SPEED / BAY SPACING	52' x 60' / 52' x 56'		

JOE HAMWAY
 (248) 948 0113
 jhamway@signatureassociates.com

GREG HUDAS
 (248) 799 3162
 ghudas@signatureassociates.com

