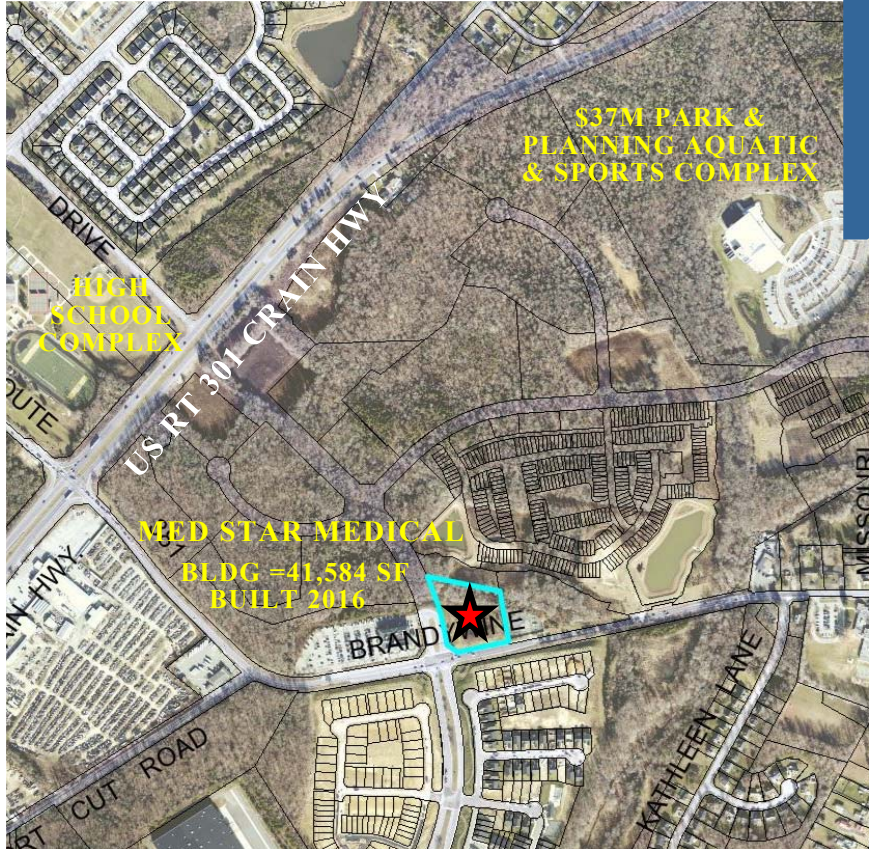




# LAND & COMMERCIAL, INC.

*Serving Maryland's Real Estate Needs Since 1974*



**FOR SALE**  
**CORNER PROPERTY**  
**IDEAL FOR DAYCARE FACILITY**

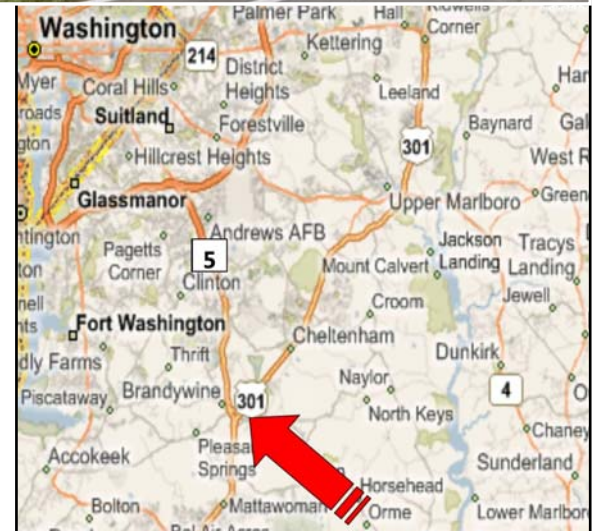


## 14000 Brandywine Road

Brandywine, MD 20613

### Property Information:

- ◆ 2.98 ACRES at full lighted intersection
- ◆ CORNER PROPERTY directly adjacent MedStar Health
- ◆ MXT zoning— many types of businesses permitted—daycare, medical offices, etc.
- ◆ This Retail Master Planned Land - 196 Acre Stephen's Crossing Community
- ◆ RESIDENTIAL INFLUX: 540 multifamily units; 497 townhomes; 30+ acres of Commercially zoned land
- ◆ Adjacent to the Southern Area Aquatic and Recreation Complex (SAARC), the first Multi-Generational Community Recreational Center in Prince George's County. The 75,000 SF project includes a natatorium, a gymnasium, a fitness room & flexible programmable space, a \$37 Million facility.



Leo Bruso, SIOR  
Direct: 301-952-9705  
[LeoBruso@LandCommercial.com](mailto:LeoBruso@LandCommercial.com)

Carrie J. Shearer, Broker  
Direct: 301-952-8433  
[CarrieShearer@LandCommercial.com](mailto:CarrieShearer@LandCommercial.com)

14416 Old Mill Road, Suite 201  
Upper Marlboro, MD 20772

Main: 301-952-9700  
[www.LandCommercial.com](http://www.LandCommercial.com)

Note: The information contained within this publication has been obtained from sources believed reliable. While we believe it is accurate, we make no guarantees, warranties or representations as to its accuracy.