

FOR SALE

# HUBER BUSINESS PARK

Lots available on Huber Park

Weldon Spring, MO 63304

- **525 Huber Park**  
.98 +/- acre - \$99,000
- **540 Huber Park**  
1.57 +/- acres - \$126,500
- **550 Huber Park**  
.98 +/- acre - \$99,000

**BUILD TO SUIT**



FOR MORE INFORMATION CALL EXCLUSIVE LEASING AND MANAGING AGENT:

**CG** CORPORATE  
GROUP, INC.

**Kim Scheidegger York**

[Kim@CorporateGrp.com](mailto:Kim@CorporateGrp.com)

636-946-0761 Ext 224

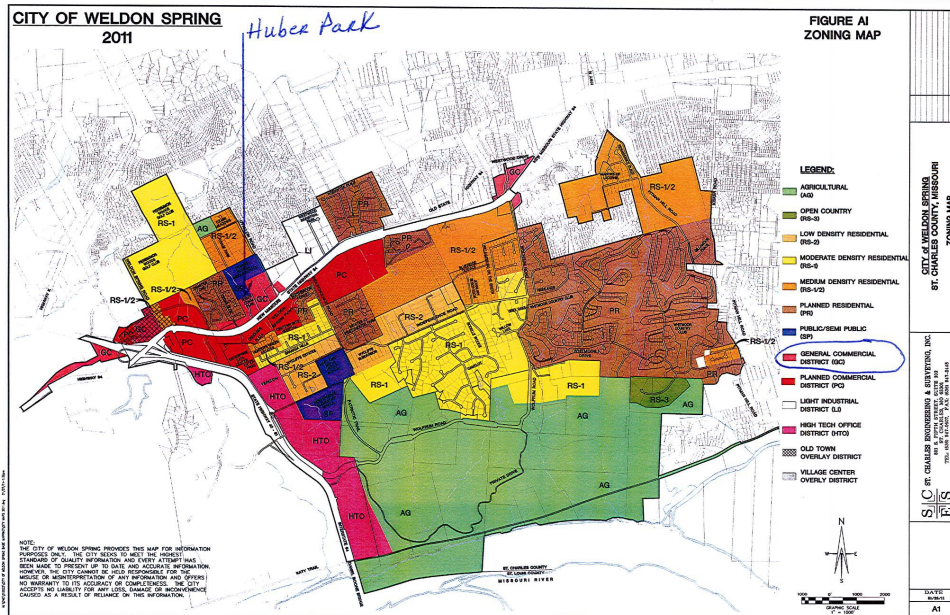
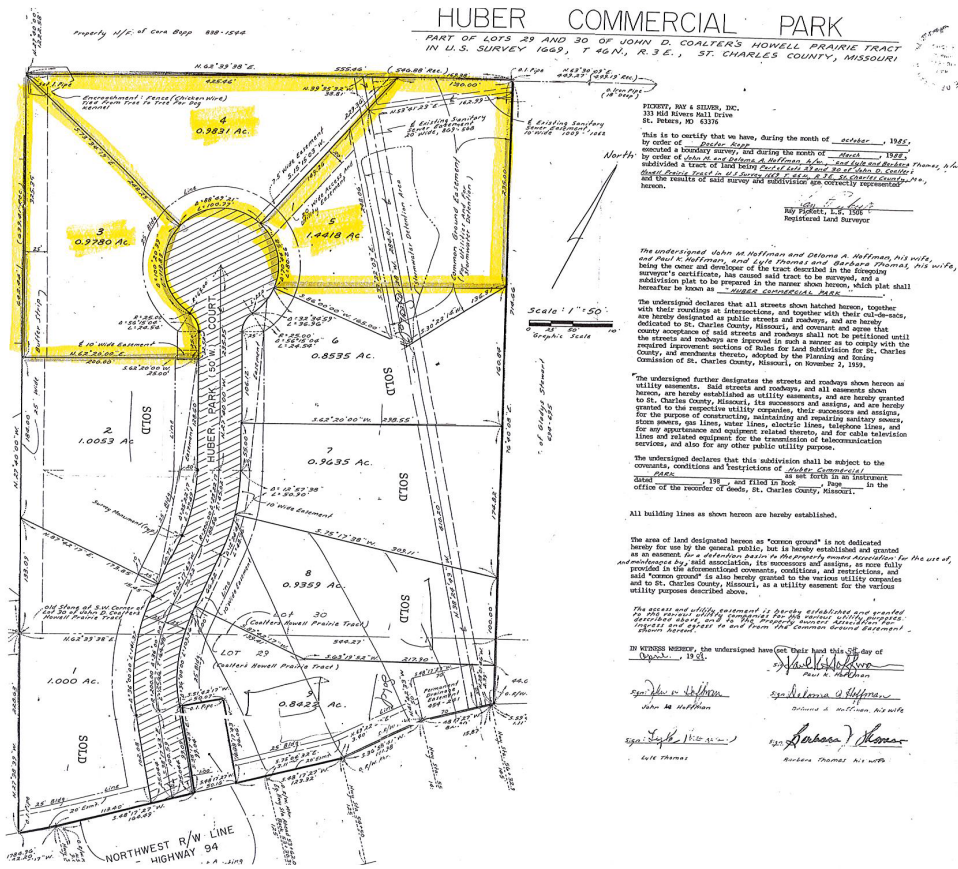
Commercial/Residential Real Estate \* Leasing  
Sales \* Tenant Rep \* Management \* Development

[www.corporategrp.com](http://www.corporategrp.com)

Information contained herein has been obtained from the owner of the property or from other sources. The brokers do not guarantee the accuracy of this information. Seller, Agents and Broker make NO representation as to the conditions of the property and recommend that the purchaser investigate fully.

# HUBER BUSINESS PARK

Lots Available on Huber Park Drive  
Weldon Spring, MO 63304



Commercial/Residential Real Estate \* Leasing  
Sales \* Tenant Rep \* Management \* Development  
2500 S Old Hwy 94, Suite 200, St. Charles MO 63303  
Office 636.946.0761 Fax 636.946.6745