

FOR SALE

100 NORTH INDUSTRIAL PARKWAY
WEST UNION, IA 52175



RYAN FITZPATRICK
Senior Vice President
+1 319 431 1898
rfitzpatrick@iowaca.com

PARKER RIDGE
Associate
+1 641 226 9983
pridge@iowaca.com

TOM ALLEN, CCIM
President, Principal
+1 479 845 3000
tallen@sagepartners.com

MATTHEW ALLEN
Associate
+1 479 845 3000
mallen@sagepartners.com



**CUSHMAN &
WAKEFIELD**

Iowa Commercial Advisors



**CUSHMAN &
WAKEFIELD**



Independently Owned and Operated / A Member of the Cushman & Wakefield Alliance

100 NORTH INDUSTRIAL PARKWAY

West Union, IA 52175

FOR SALE | \$465,000.00 / \$78.00 PSF



Zoned M-2



Building: 5,910 SF | Lot: 2.54 AC



Built in 2010



2 drive-in doors



1 dock door



100 NORTH INDUSTRIAL PARKWAY

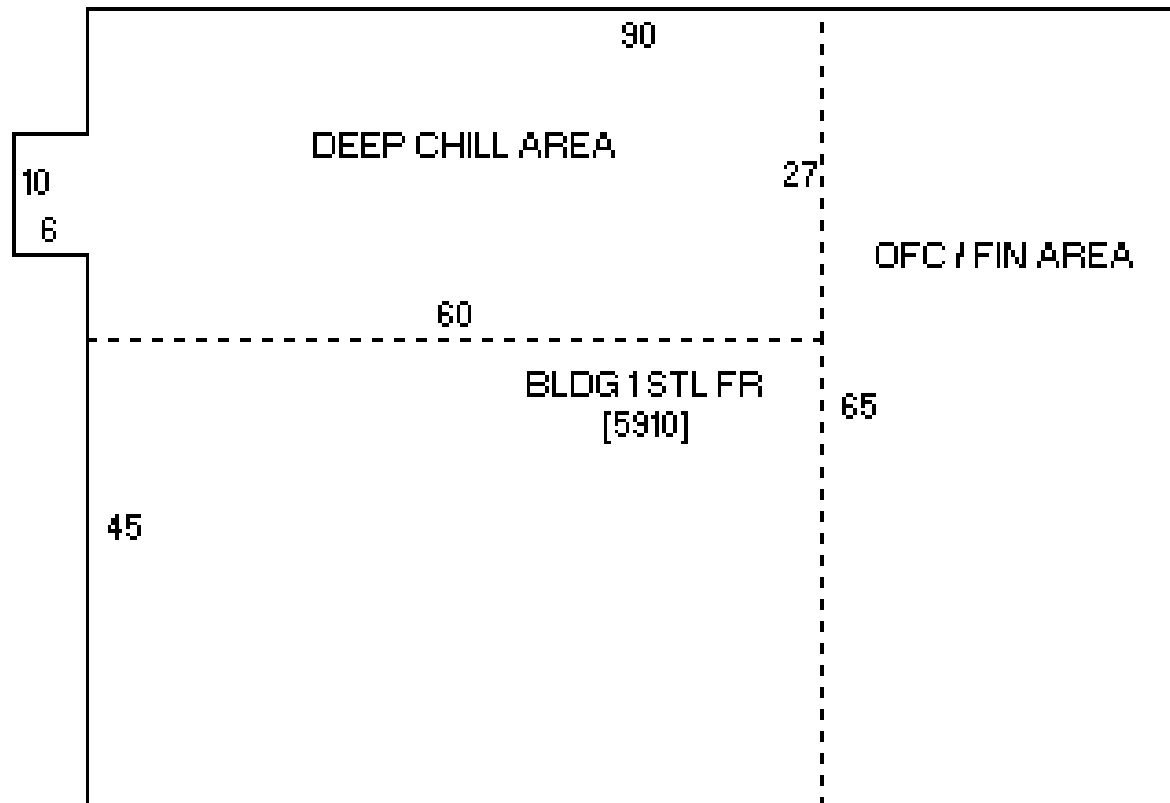
West Union, IA 52175



100 NORTH INDUSTRIAL PARKWAY

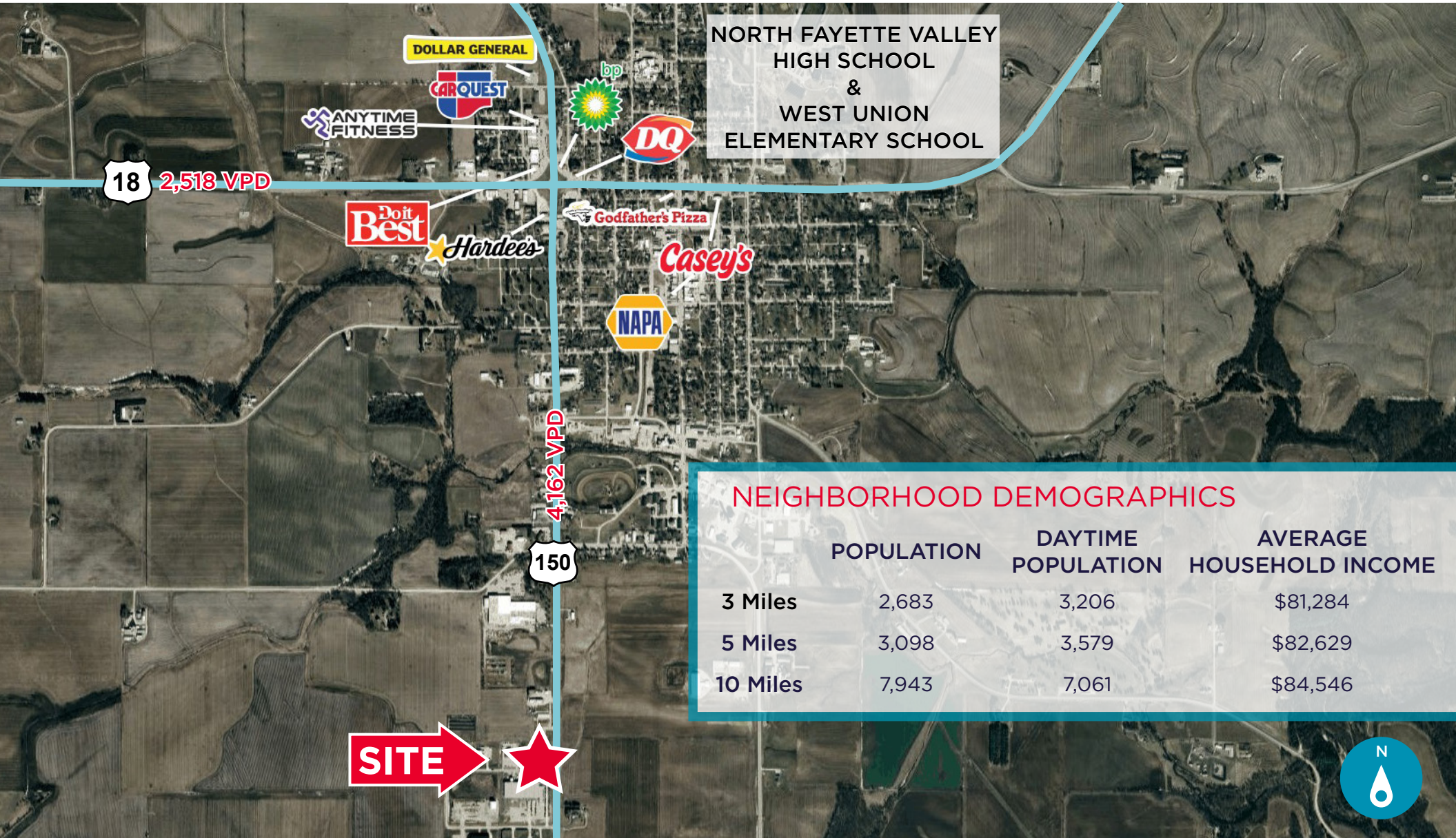
West Union, IA 52175

Building Floor Plan



100 NORTH INDUSTRIAL PARKWAY | AERIAL

West Union, IA 52175



FOR SALE

100 NORTH INDUSTRIAL PARKWAY
WEST UNION, IA 52175



CONTACT

RYAN FITZPATRICK
Senior Vice President
+1 319 431 1898
rfitzpatrick@iowaca.com

PARKER RIDGE
Associate
+1 641 226 9983
pridge@iowaca.com

TOM ALLEN, CCIM
President, Principal
+1 479 845 3000
tallen@sagepartners.com

MATTHEW ALLEN
Associate
+1 479 845 3000
mallen@sagepartners.com



**CUSHMAN &
WAKEFIELD**

Iowa Commercial Advisors



**CUSHMAN &
WAKEFIELD**



Independently Owned and Operated / A Member of the Cushman & Wakefield Alliance
©2021 Cushman & Wakefield. All rights reserved. The information contained in this communication is strictly confidential. This information has been obtained from sources believed to be reliable but has not been verified. No warranty or representation, express or implied, is made as to the condition of the property (or properties) referenced herein or as to the accuracy or completeness of the information contained herein, and same is submitted subject to errors, omissions, change of price, rental or other conditions, withdrawal without notice, and to any special listing conditions imposed by the property owner(s). Any projections, opinions or estimates are subject to uncertainty and do not signify current or future property performance.