

**FOR
SUBLEASE**

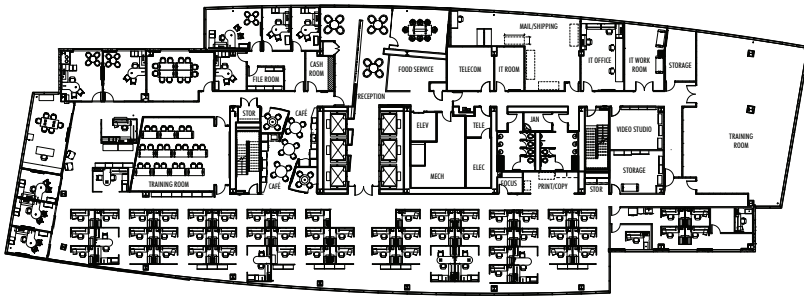
550 South Caldwell Street

550 SOUTH CALDWELL STREET, CHARLOTTE, NC 28202



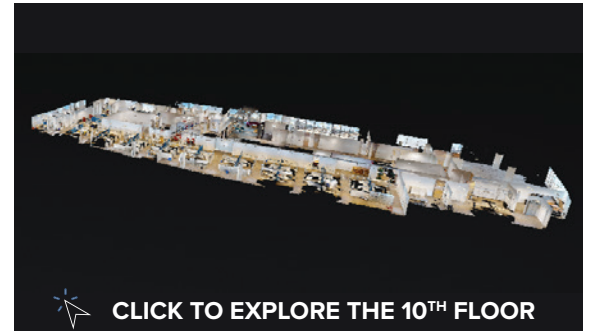
CBRE

Bridging the Gap Between the CBD and Charlotte's Hottest Submarket

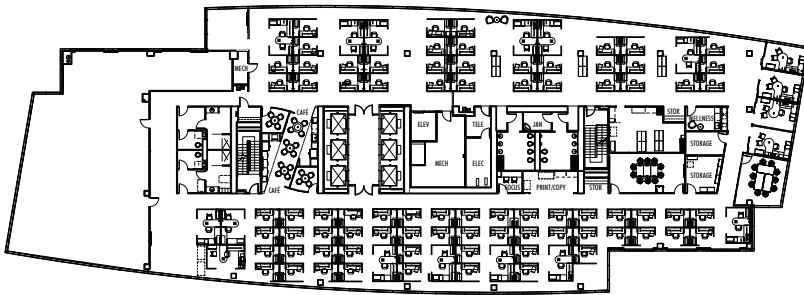


10TH FLOOR

SUITE 1000 - 22,756 RSF | [DOWNLOAD](#) 



[CLICK TO EXPLORE THE 10TH FLOOR](#)

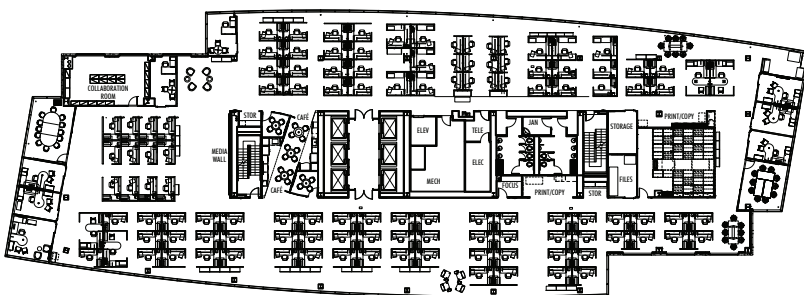


11TH FLOOR

SUITE 1100 - 22,840 RSF | [DOWNLOAD](#) 



[CLICK TO EXPLORE THE 11TH FLOOR](#)



12TH FLOOR

SUITE 1200 - 22,923 RSF | [DOWNLOAD](#) 



[CLICK TO EXPLORE THE 12TH FLOOR](#)

PROPERTY HIGHLIGHTS



PLUG & PLAY
furniture available



LESS THAN 1 BLOCK
to the Stonewall light rail station



OCTOBER 2025
sublease expiration



WALKABLE FOOD & BEVERAGE
Whole Foods, Dean's Italian Steakhouse,
Starbuck's, Jinya Ramen Bar



360 DEGREE VIEWS



FITNESS CENTER
on-site



CONVENIENT ACCESS
to I-277 & I-77



PARKING DECK
1.6/1,000 SF ratio

... AND MORE!

FULL FLOORS AVAILABLE

10th

22,756 RSF

62 workstations, 10 offices,
2 training rooms,
7 conference rooms,
room for additional workstations

11th

22,840 RSF

100 workstations, 4 offices,
4 conference rooms, shell space
of approximately 3,000-4,000 sq.
ft. that could be built out to spec

12th

22,923 RSF

123 workstations, 8 offices,
4 conference rooms





FOR MORE INFORMATION:

PIERS WATES
704-557-6481
piers.wates@cbre.com

JOHN CHRISTENBURY
704-330-9988
john.christenbury@cbre.com

© 2022 CBRE, Inc. All rights reserved. This information has been obtained from sources believed reliable, but has not been verified for accuracy or completeness. You should conduct a careful, independent investigation of the property and verify all information. Any reliance on this information is solely at your own risk. CBRE and the CBRE logo are service marks of CBRE, Inc. All other marks displayed on this document are the property of their respective owners, and the use of such logos does not imply any affiliation with or endorsement of CBRE. Photos herein are the property of their respective owners. Use of these images without the express written consent of the owner is prohibited. PMStudio_March2022